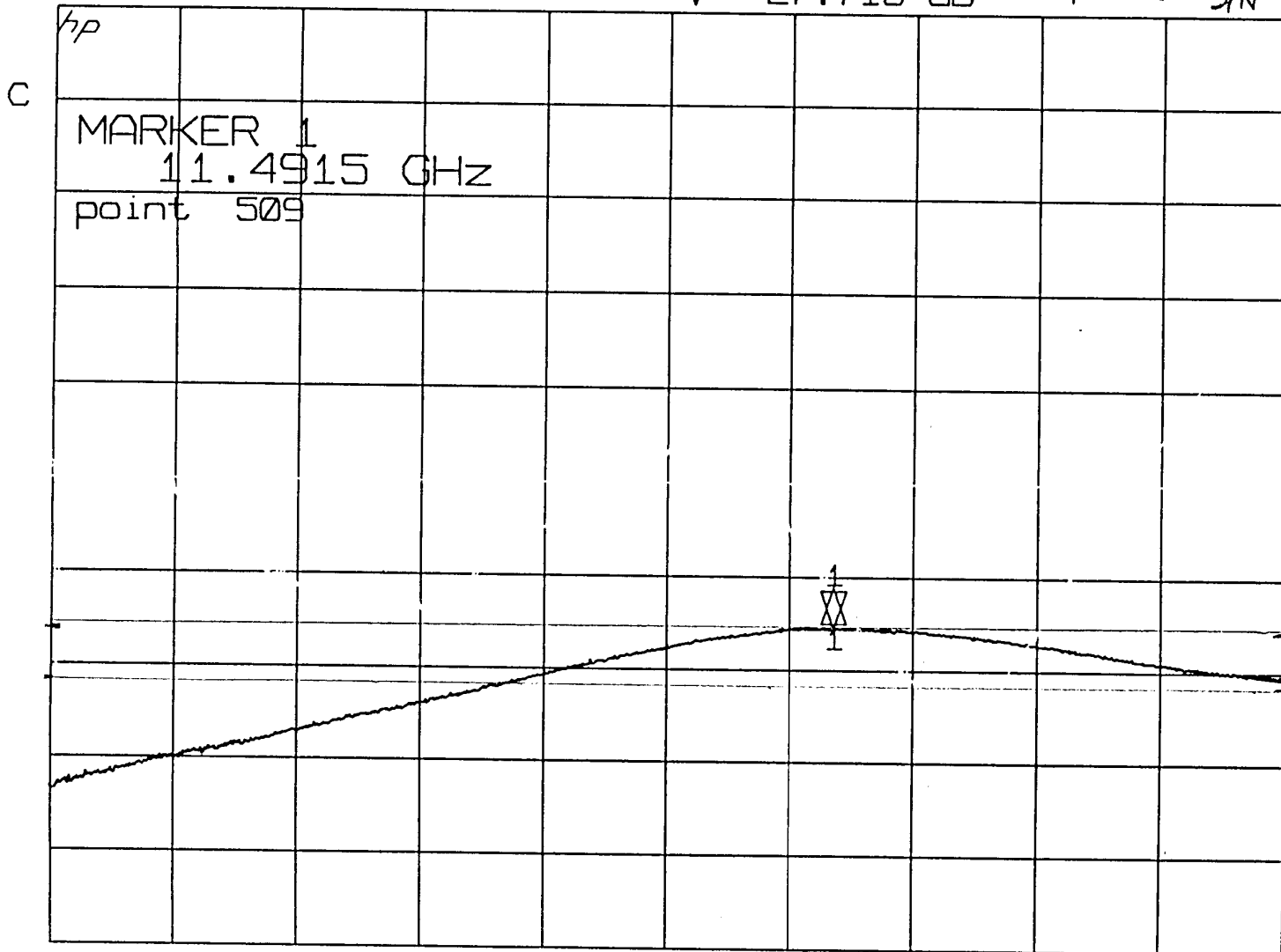


► S₁₂ log MAG
REF -20.0 dB BeamPhase Mon
1 5.0 dB/
▽ -27.718 dB 1440 S/N ?

► MARKER 1
11.491 GHz
-27.718 dB



START 11.174000000 GHz
STOP 11.674000000 GHz

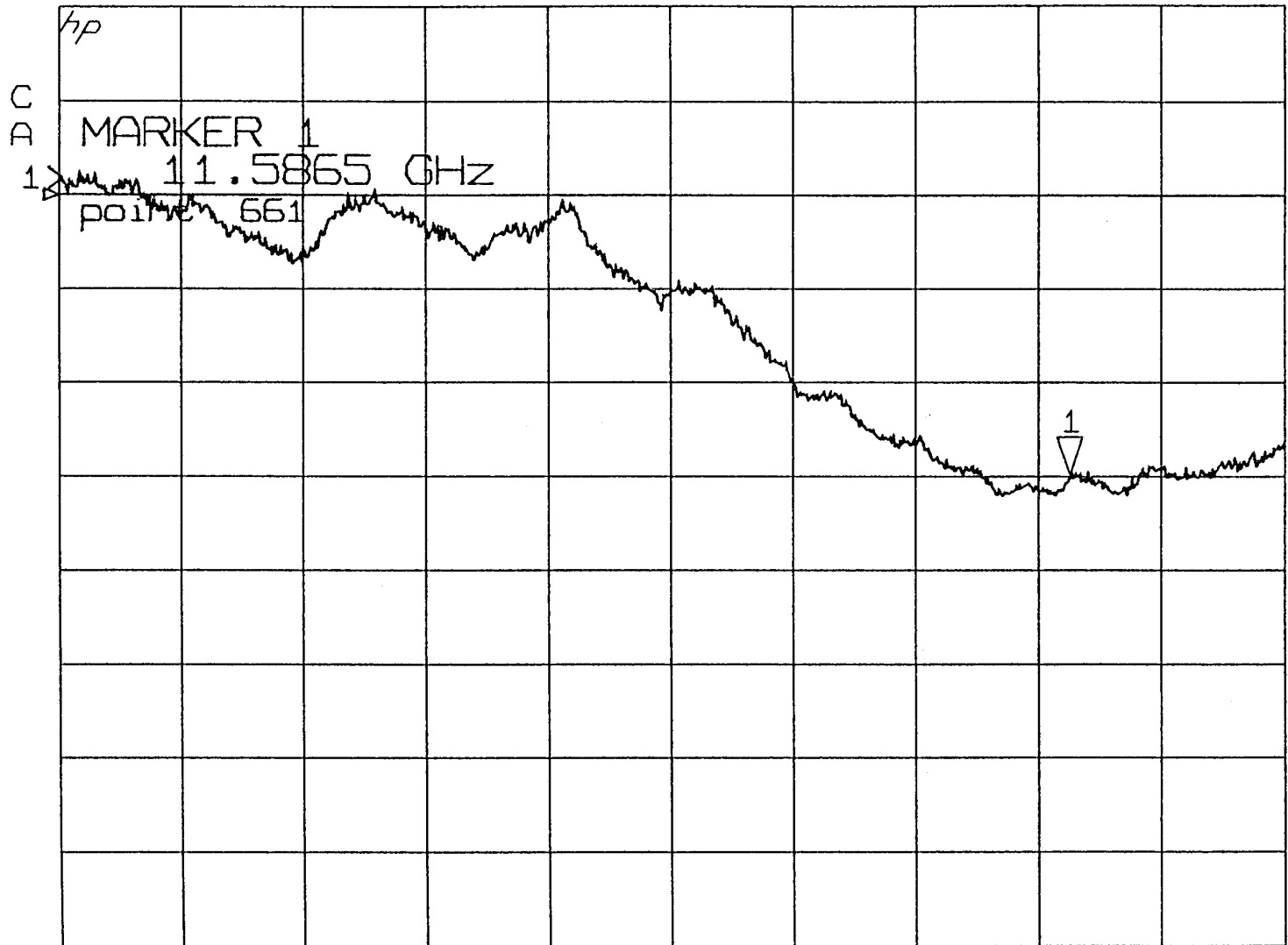
11 DEC 00
15:48:24

► S₂₂
REF 0.0 dB
1 0.05 dB/
▽ -0.1490 dB

log MAG

BEAM PHASE MONITOR S/N 110

► MARKER 1
11.586 GHz
-0.1490 dB



CENTER 11.424000000 GHz
SPAN 0.500000000 GHz

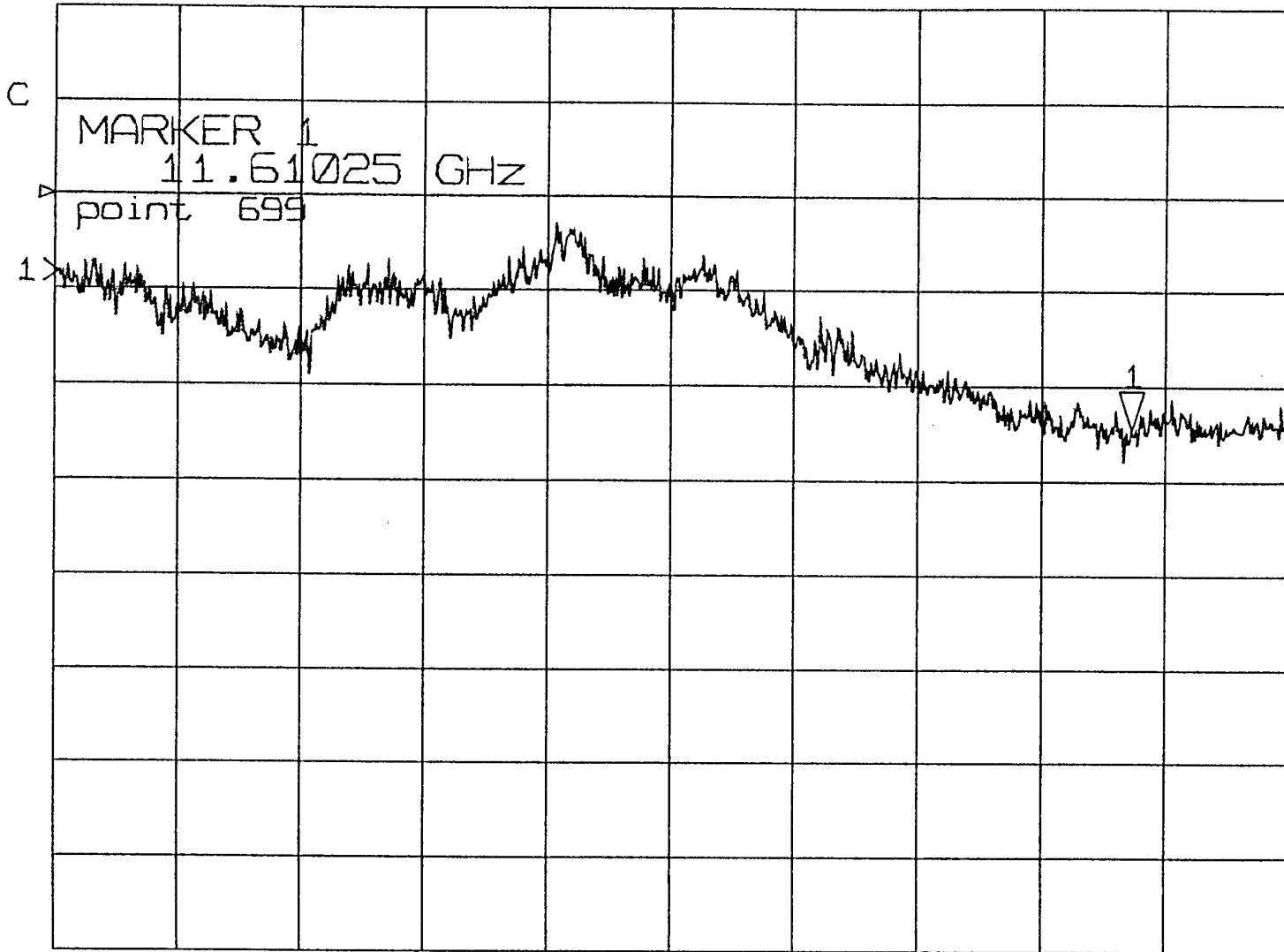
RL
24 JAN 01
16:34:19

► S22
REF 0.0 dB
1 0.05 dB/
▽ -0.1220 dB

log MAG

BEAM PHASE MONITOR SIN 107

► MARKER 1
11.610 GHz
-0.1220 dB



CENTER 11.424000000 GHz
SPAN 0.500000000 GHz

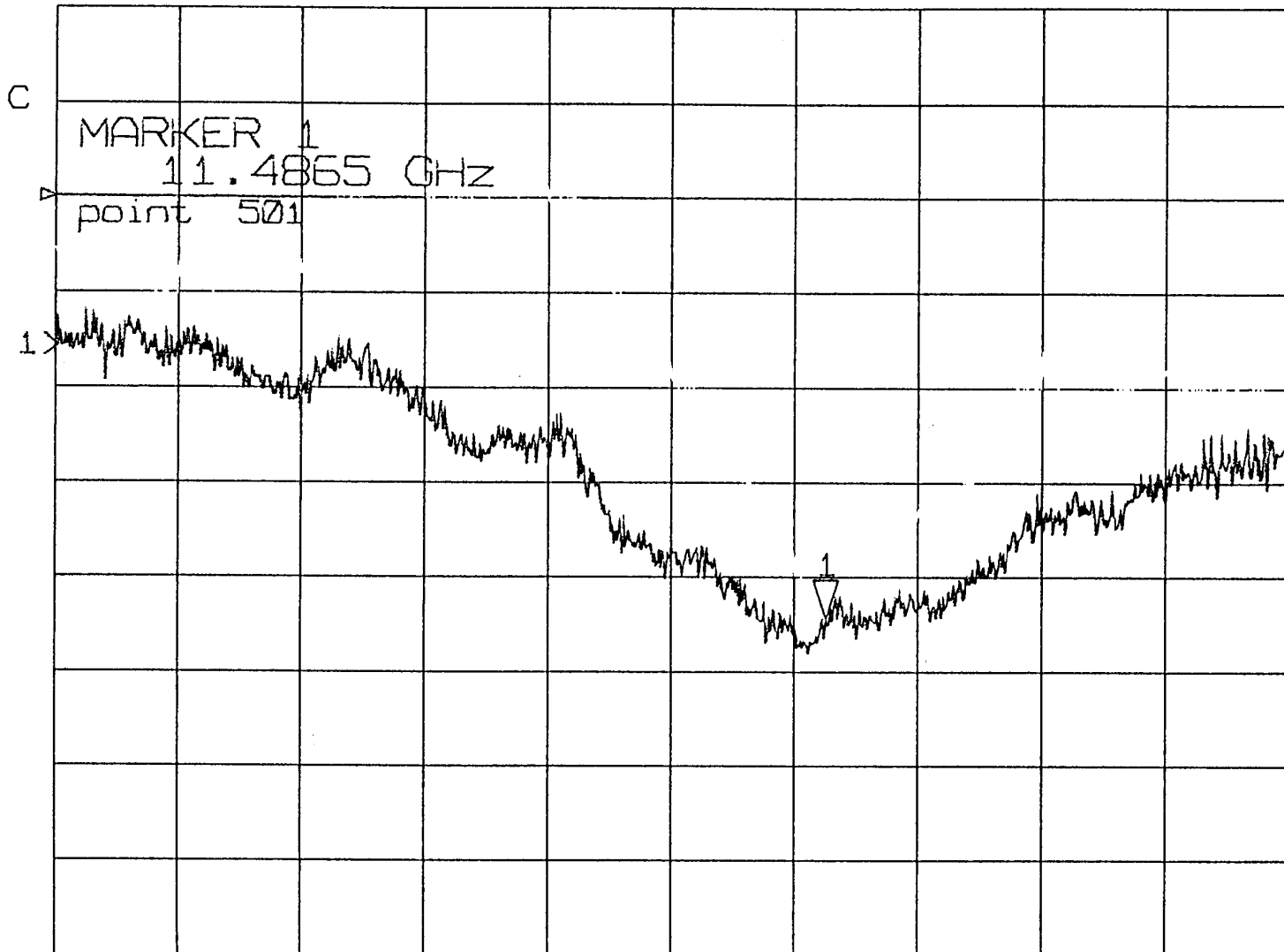
RL
29 JAN 01
11:33:47

▶ S22
REF 0.0 dB
1 0.05 dB/
▽ -0.2215 dB

log MAG

BEAM PHASE MONITOR SIN 112

▶ MARKER 1
11.486 GHz
-0.2215 dB



CENTER 11.424000000 GHz
SPAN 0.500000000 GHz

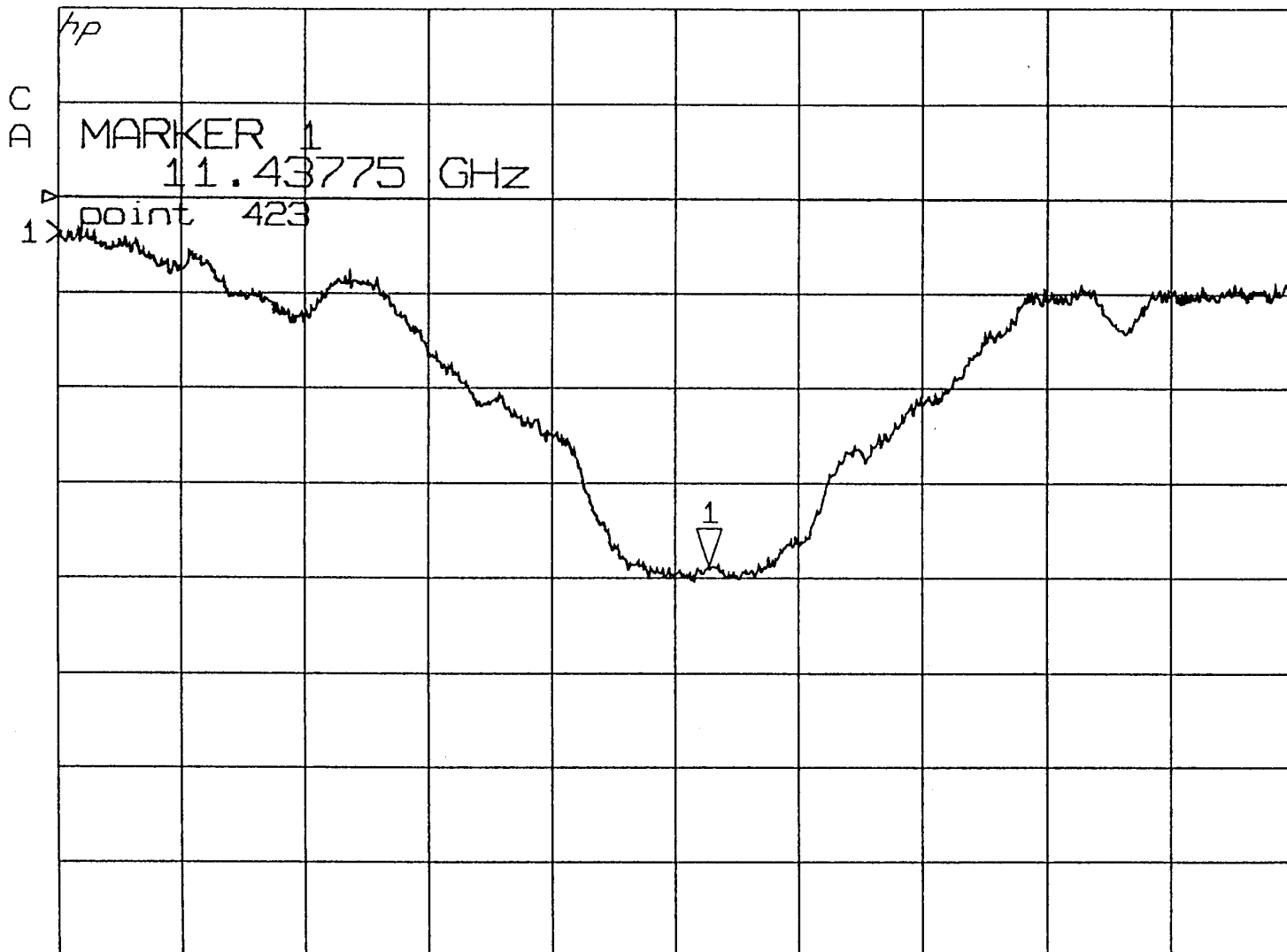
RL
29 JAN 01
11:18:40

▶ S₂₂
REF 0.0 dB
1 0.05 dB/
▽ -0.1935 dB

log MAG

BEAM PHASE MONITOR S/N 108

▶ MARKER 1
11.437 GHz
-0.1935 dB



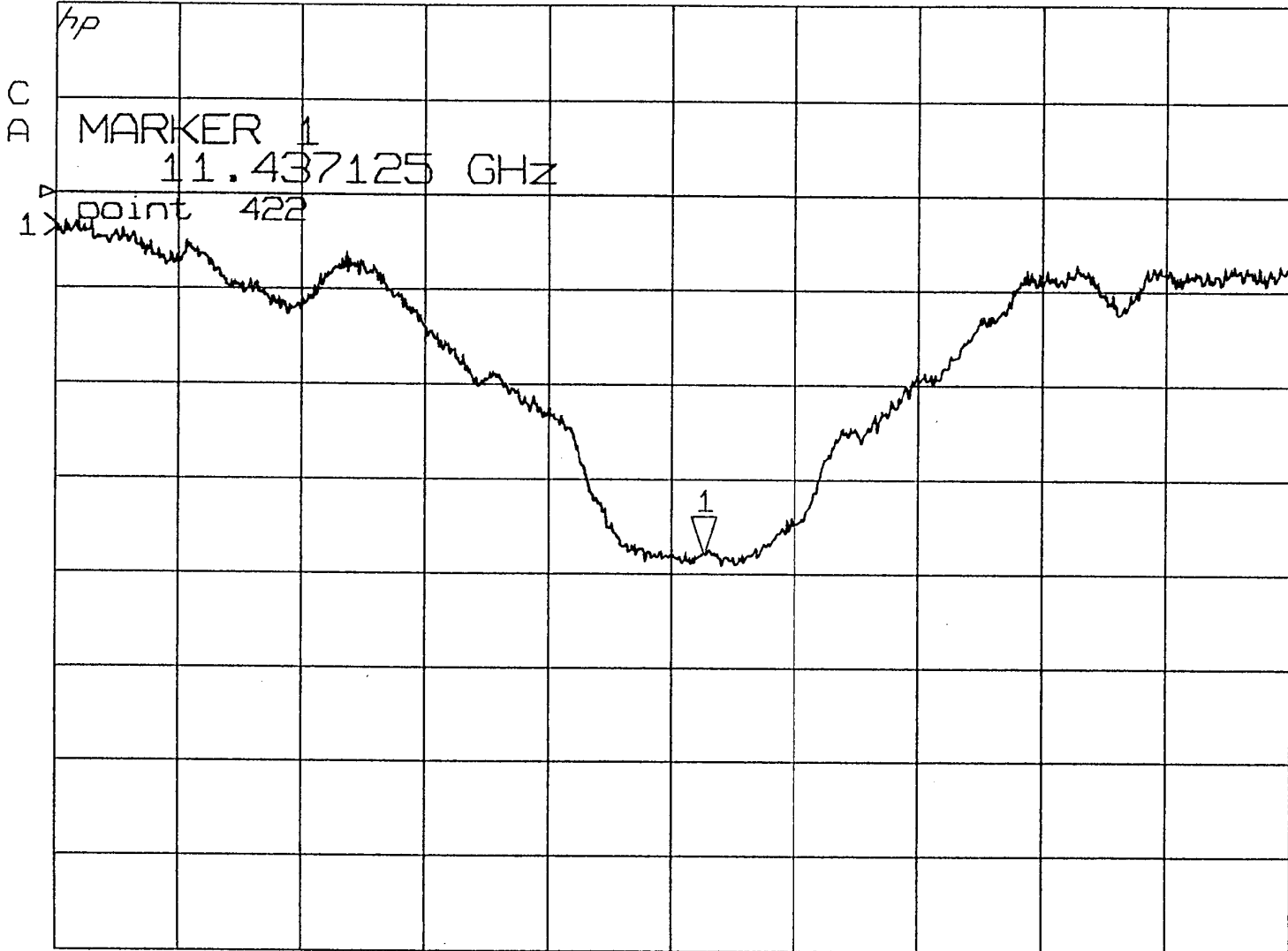
CENTER 11.424000000 GHz
SPAN 0.500000000 GHz

RL
24 JAN 01
16:28:50

► S22 log MAG
REF 0.0 dB
1 0.05 dB/
▽ -0.1895 dB

BEAM PHASE MONITOR SIN 105

► MARKER 1
11.437 GHz
-0.1895 dB



CENTER 11.424000000 GHz
SPAN 0.500000000 GHz

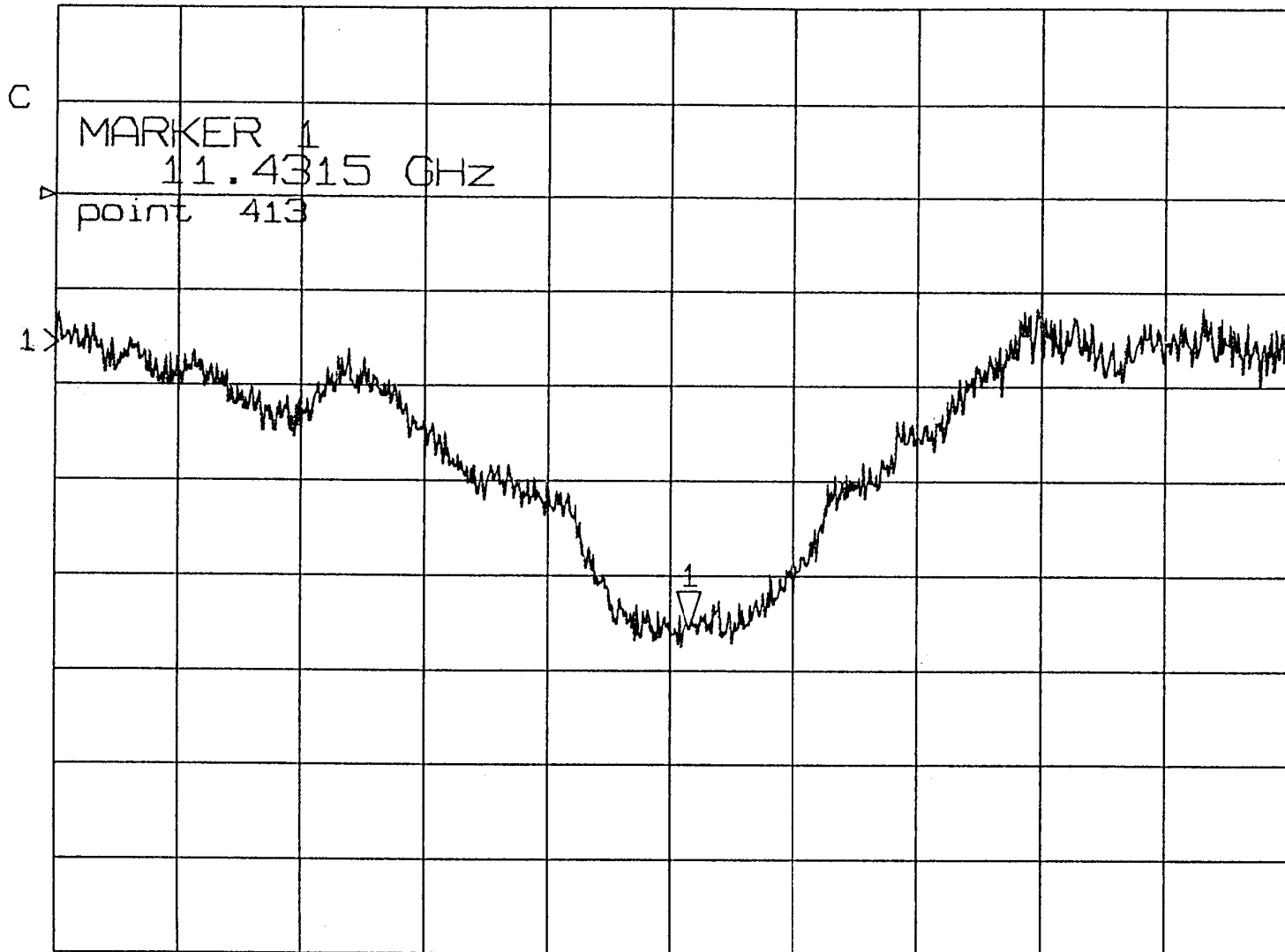
RL
24 JAN 01
16:22:04

S22
REF 0.0 dB
1 0.05 dB
▽ -0.2278 dB

log MAG

BEAM PHASE MONITOR S/N 113

MARKER 1
11.431 GHz
-0.2278 dB



CENTER 11.424000000 GHz
SPAN 0.500000000 GHz

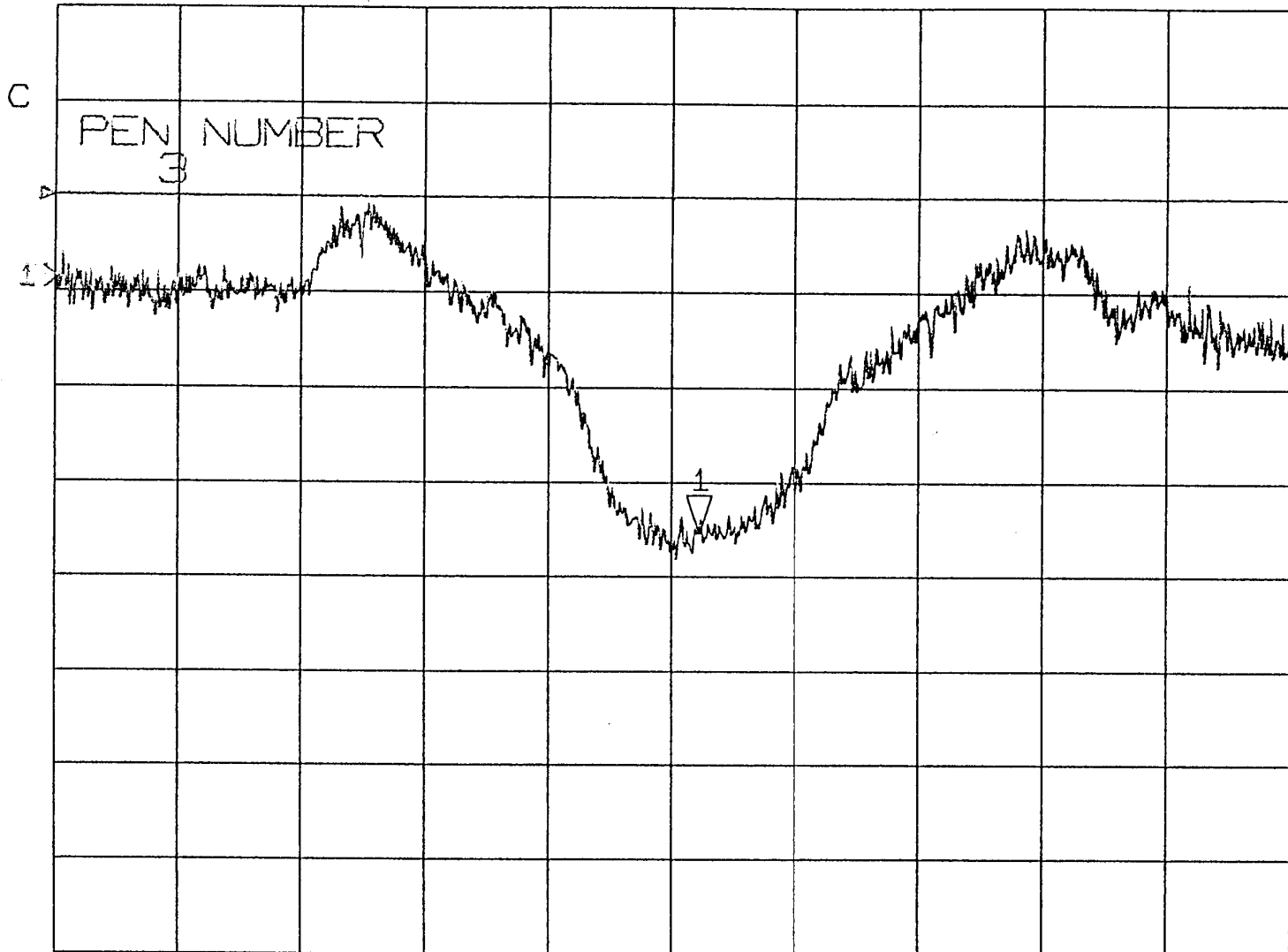
RL
29 JAN 01
11:26:37

▶ S₂₂
REF 0.0 dB
1 0.05 dB/
▽ -0.1768 dB

log MAG

BEAM PHASE MONITOR S/N 106

▶ MARKER 1
11.435 GHz
-0.1768 dB



CENTER 11.424000000 GHz
SPAN 0.500000000 GHz

RL
29 JAN 01
10:56:06

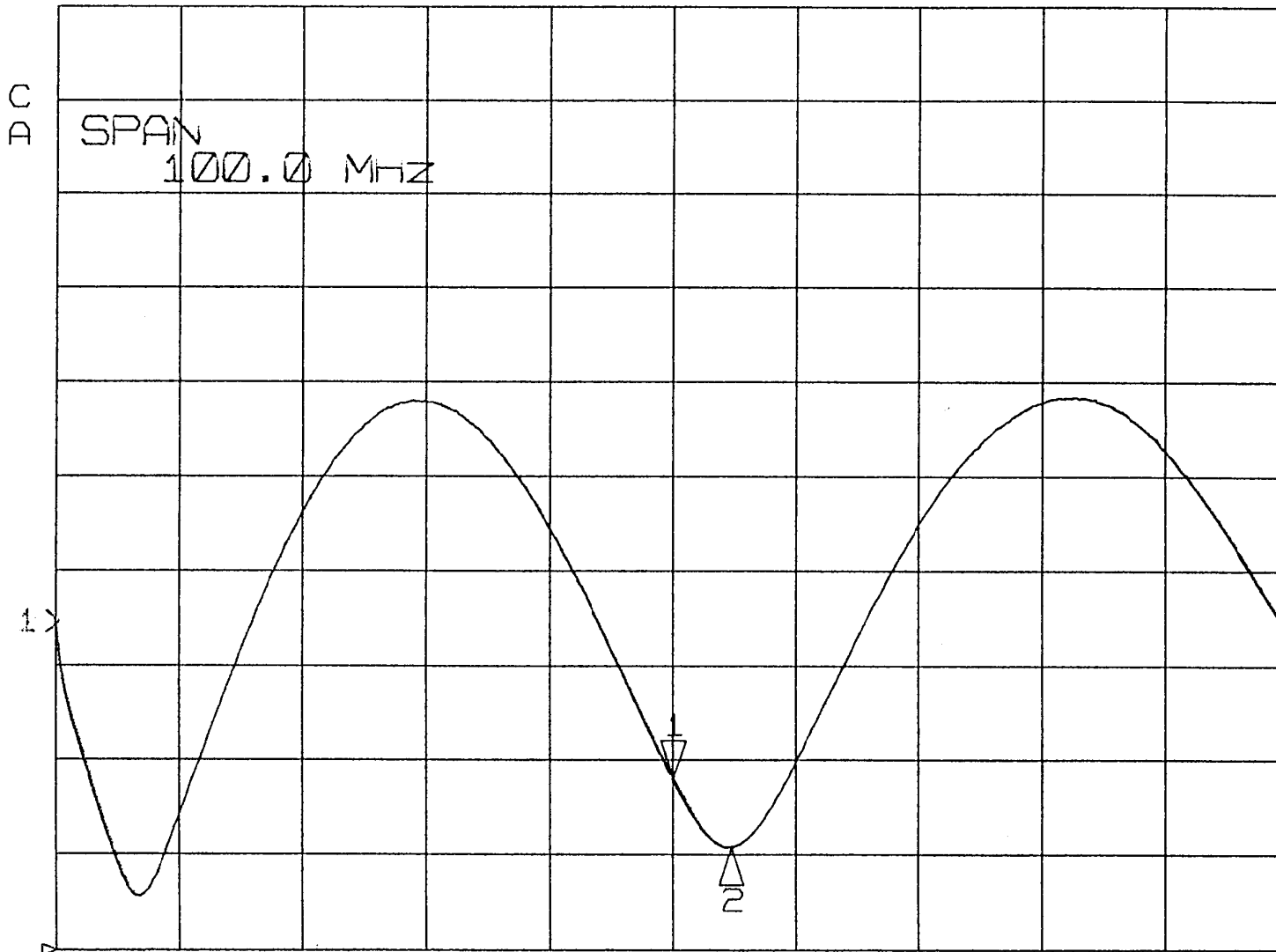
► S₁₁
REF 1.0
1 50.0 m /
▽ 1.0905

SWR

SIN 112 NUCTA recheck

► MARKER 1
11.424 GHz
1.0905

MARKER 2
11.428 GHz
1.054



CENTER 11.424000000 GHz
SPAN 0.100000000 GHz

RL

29 JAN 01
11:55:05

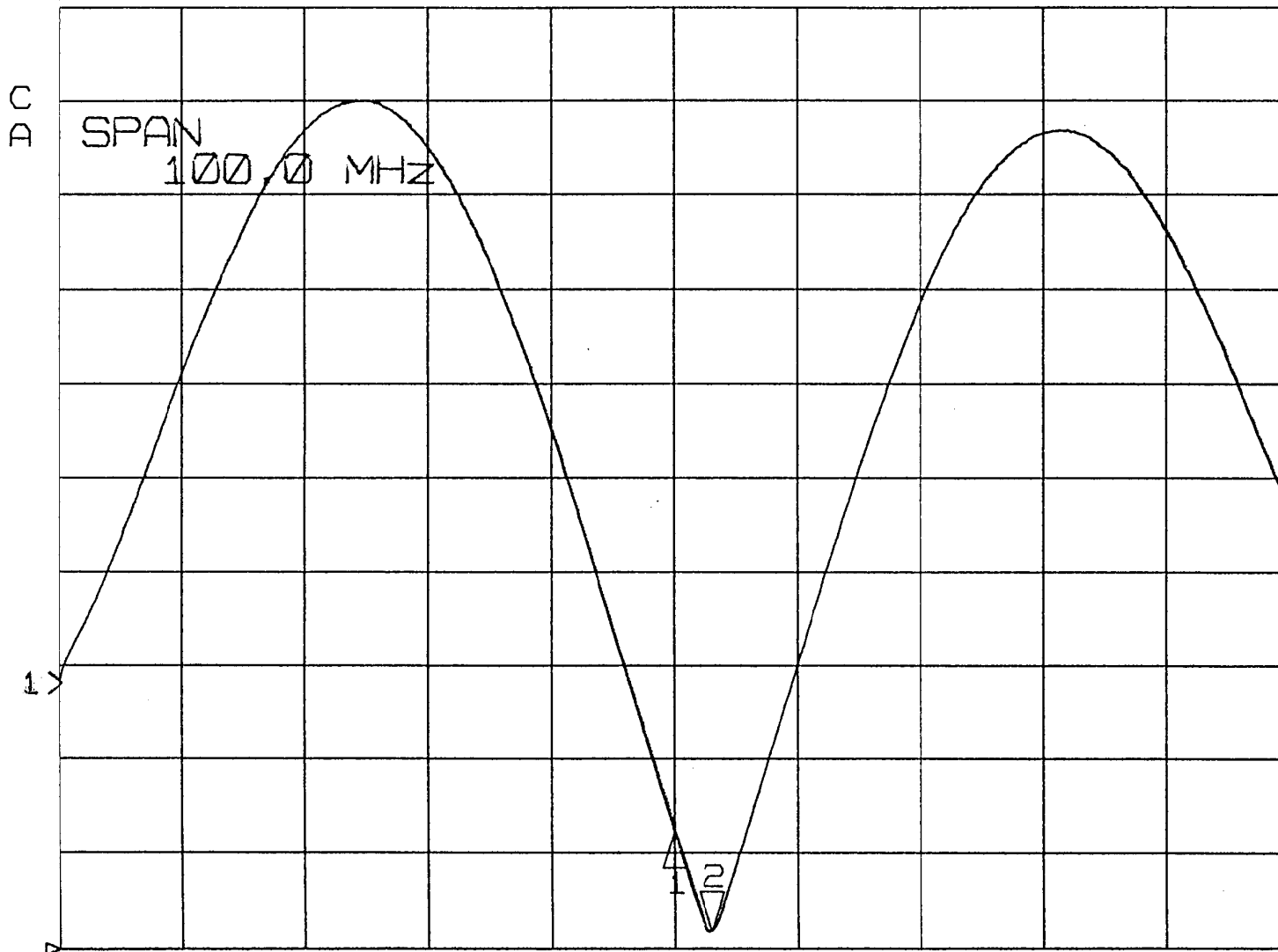
► S₁₁
REF 1.0
2 50.0 m /
▼ 1.0093

SWR

SS LOAD SW 110

MARKER 1
11.424 GHz
1.0621

► MARKER 2
11.427 GHz
1.0093



CENTER 11.424000000 GHz
SPAN 0.100000000 GHz

29 JAN 01
13:31:34

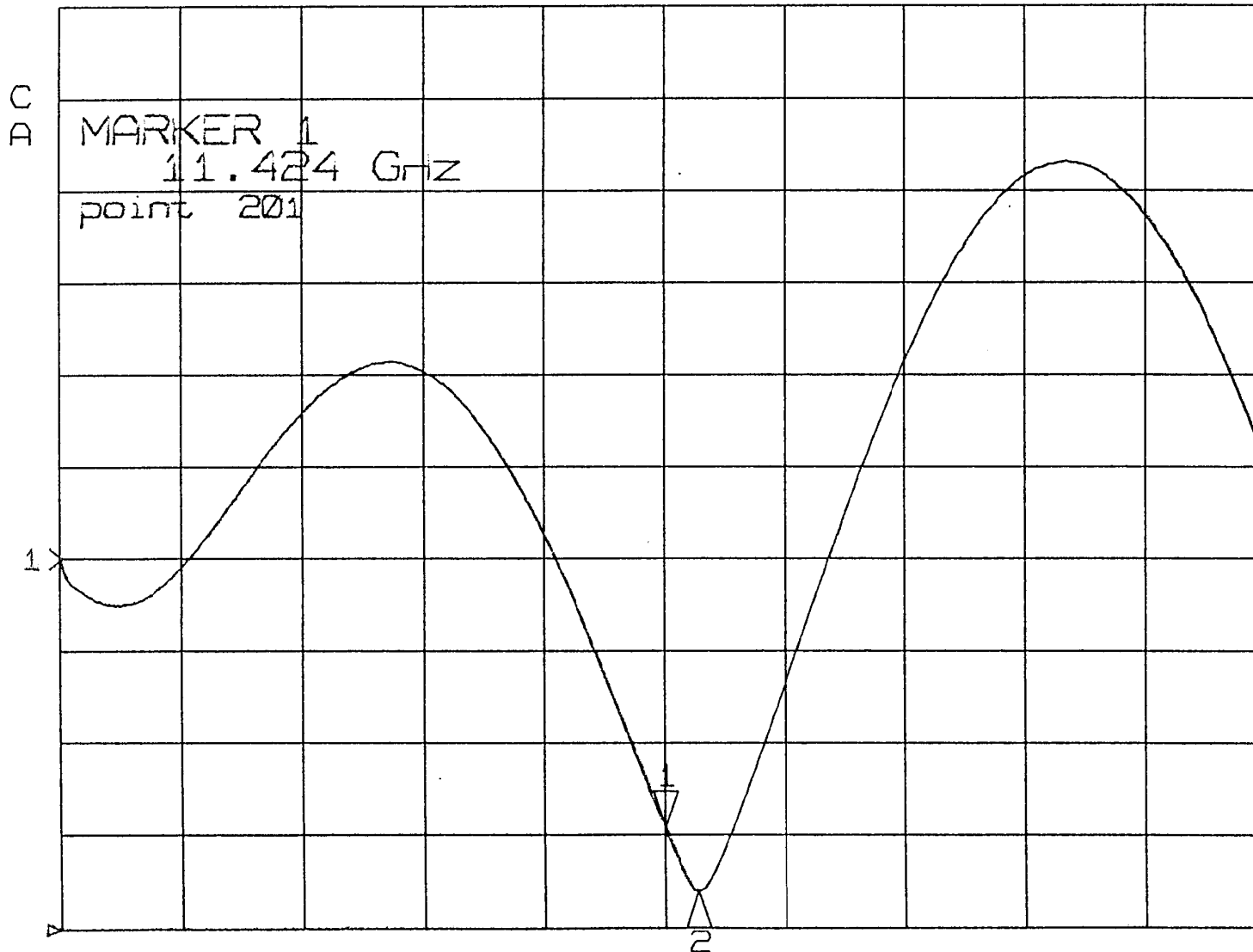
▶ S₁₁
REF 1.0
↓ 50.0 m /
▽ 1.0538

SWR

SIN 114
SS EOAD - NLCTA

▶ MARKER 1
11.424 GHz
1.0538

MARKER 2
11.426 GHz
1.0202



Two loads

CENTER 11.424000000 GHz
SPAN 0.100000000 GHz

29 JAN 01
13:26:32

▶ S₁₁
REF 1.0
2 50.0 m /
▽ 1.0016

SWR

MULTA Recteck
SS LOAD SIN 109

MARKER 1
11.424 GHz
1.0071

▶ MARKER 2
11.424 GHz
1.0016

C
A

SPAN
100.0 MHz

1x

2

T20 Loads

CENTER 11.424000000 GHz
SPAN 0.100000000 GHz

RL

29 JAN 01
13:37:34

