

Sector 20 Shielding Wall

ROD

June 3rd, 2004

Sector 20 – Shielding Wall Preparation Survey
June 3rd 2004 ROD AEG Report

Field Activities: 20 Man Hours

- ✓ Drill and install 6 wall monuments
- ✓ 2 TC2002 set-ups to define the datum:
 - All newly installed monuments
 - 5 jack-points
 - 2 quadrupoles
 - 3 brass plates
- ✓ 2 reflectorless total station set-ups using the newly installed monuments to record walls and other features
- ✓ Drill and install 7 more wall monuments and 3 floor monuments for Summer Downtime activities

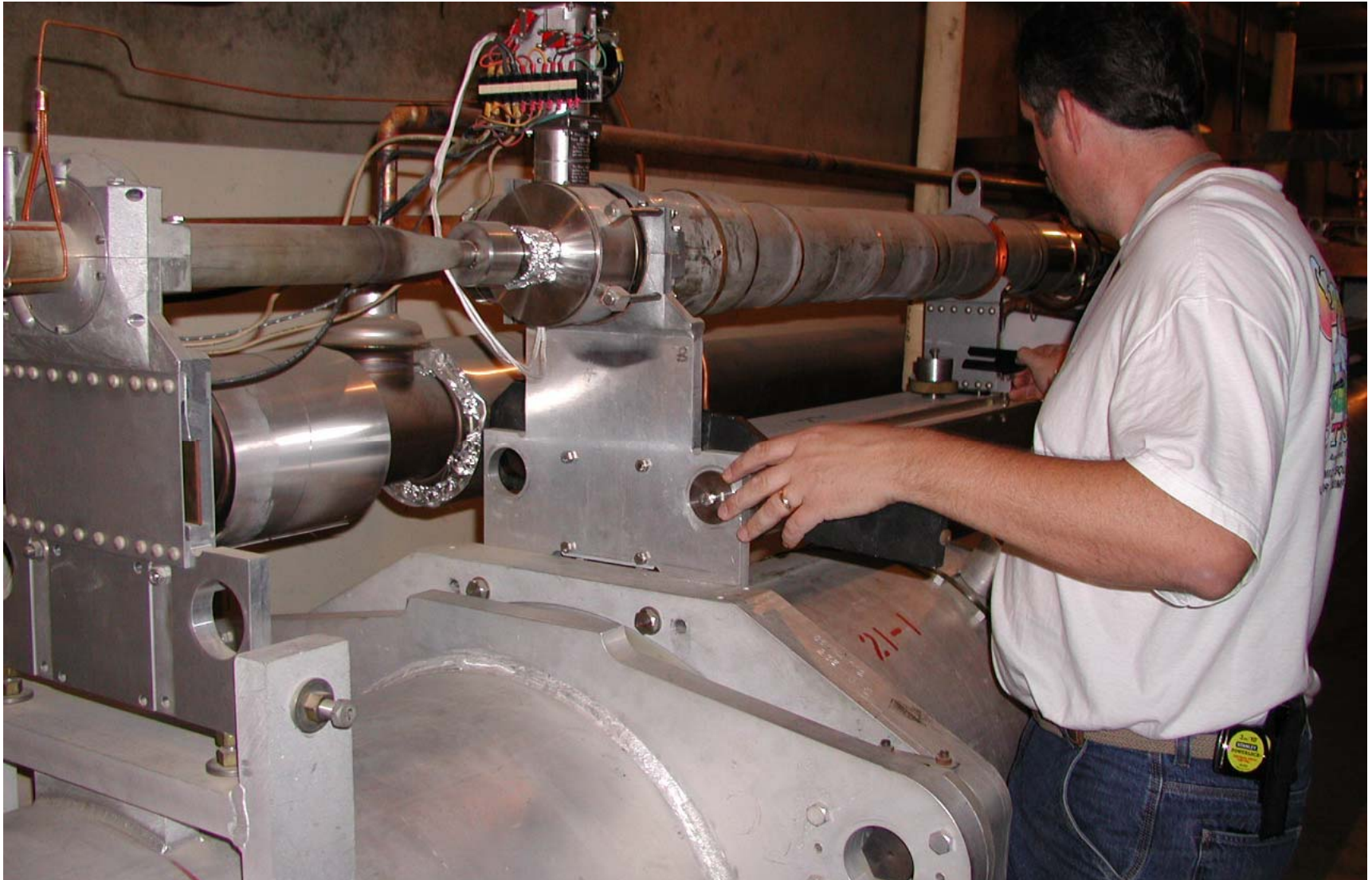
Office Activities: Estimated 15 Man Hours

- ✓ Adjust the 2 TC2002 set-ups and use the jack-points to define the accelerator line. Use quad Q901 as origin on this line
- Choose gravity vector at Q901 as y axis. The z axis is in the vertical plane of the accelerator at Q901 and perpendicular to the y axis in the direction of the accelerator. The x axis completes the triad to create a right-handed coordinate system. Derive coordinates for the 6 new 3D monuments and use these values for the 2 set-ups of the reflectorless total station
- Output all points shot by the reflectorless total station

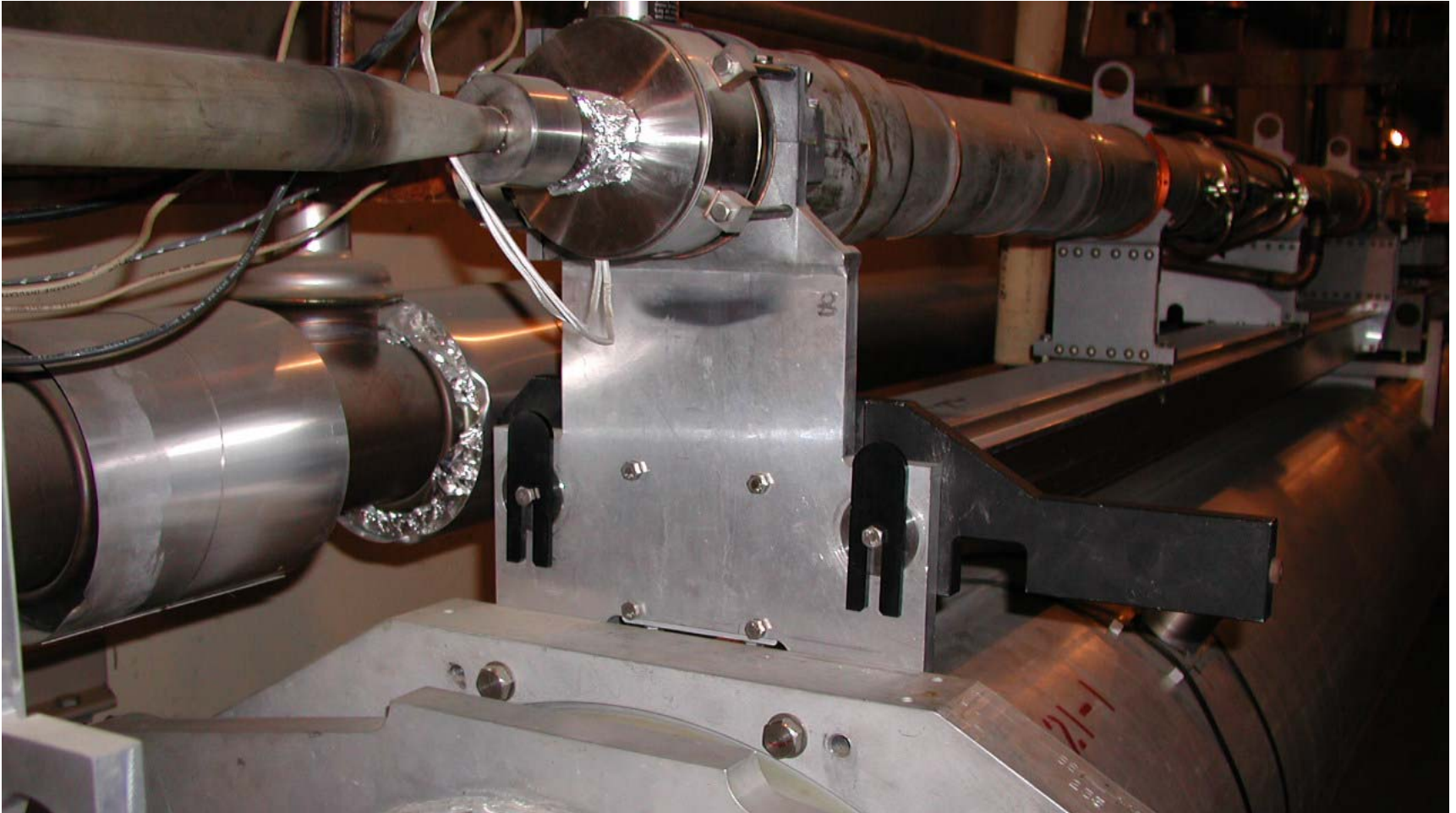
Q901 Origin of Sector 20 Network



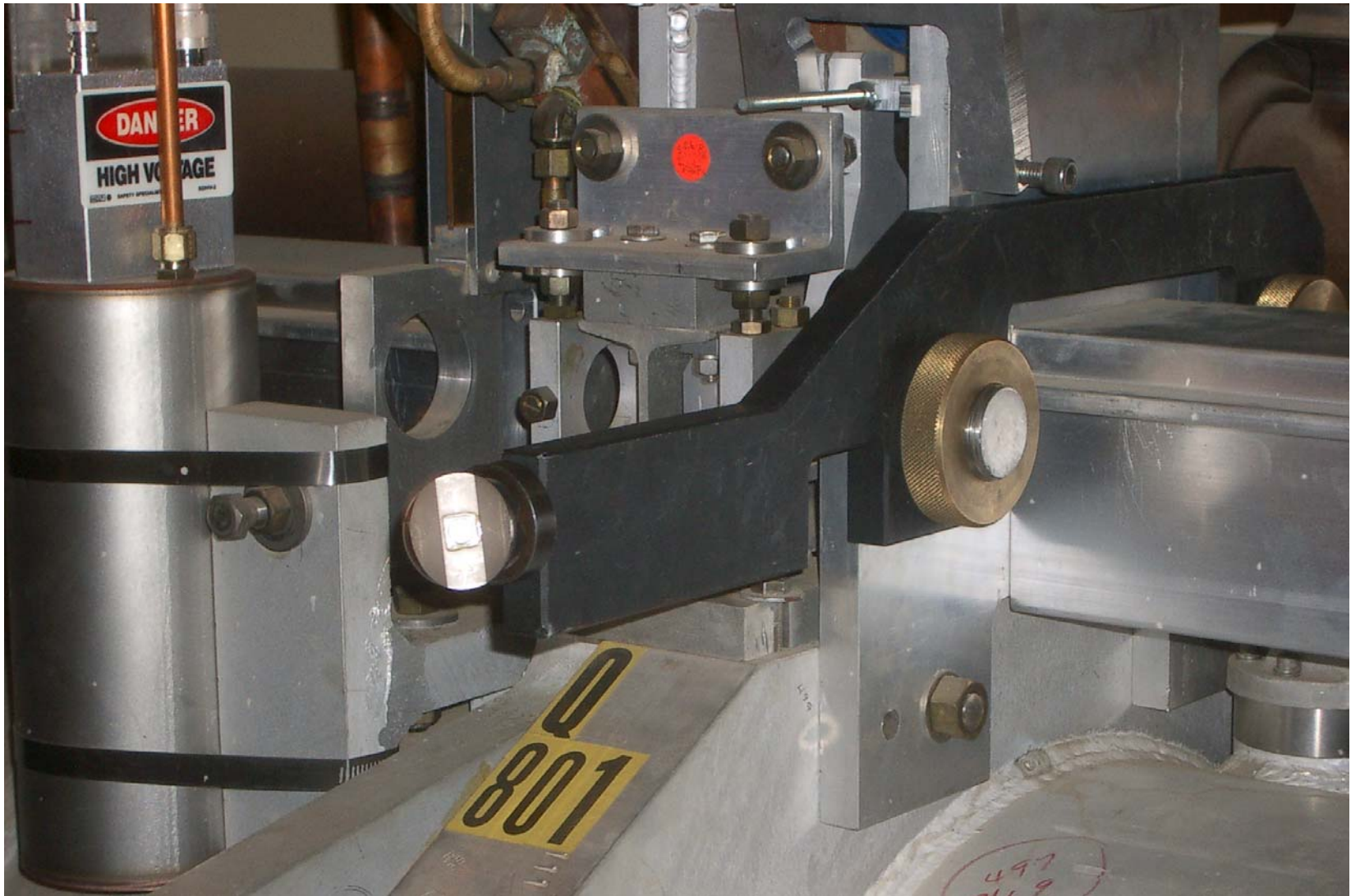
Setting Fixture to JackPoint 21-1



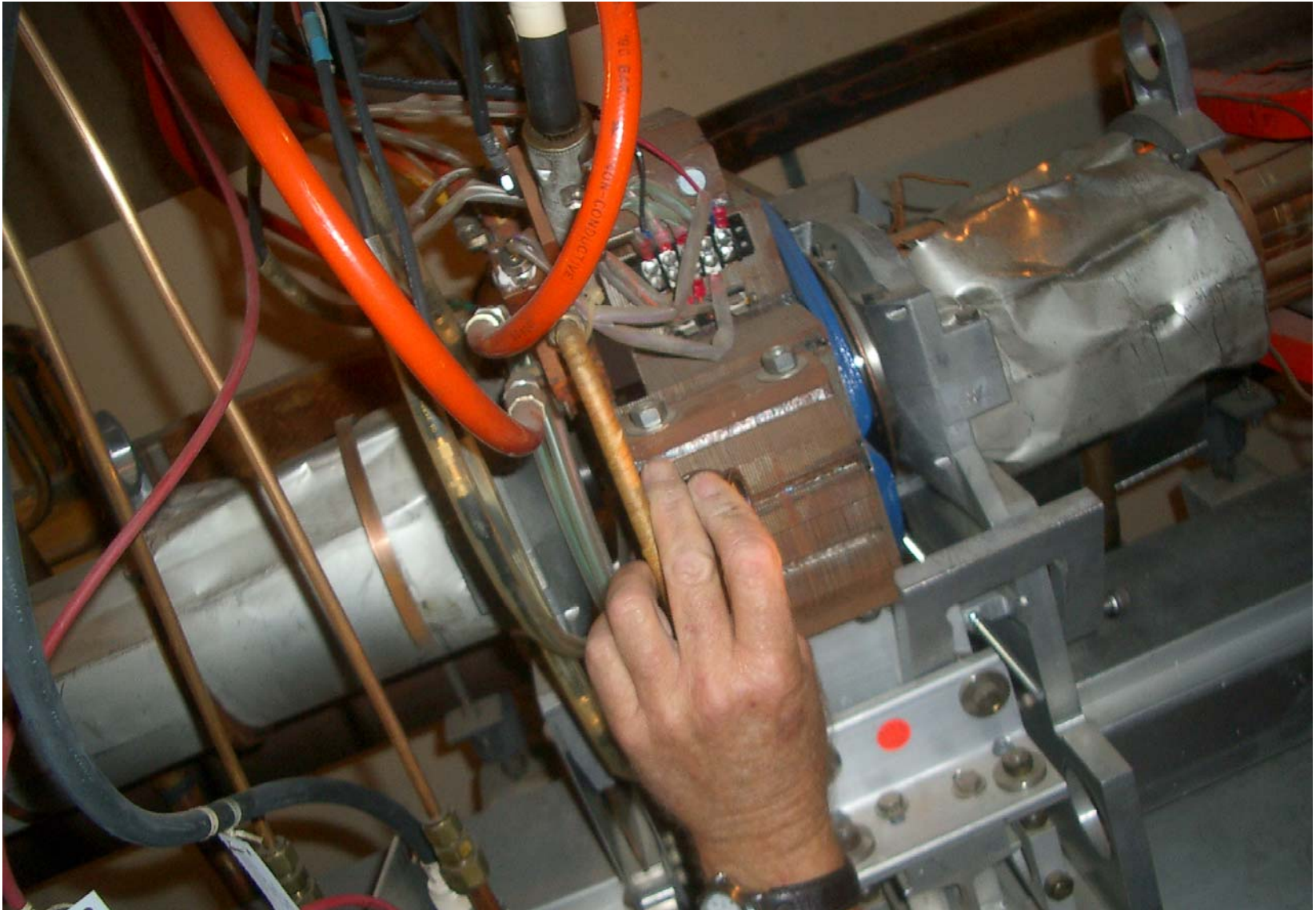
Fixture Set=> Point JP211ARM



Target on JP208ARM



Quad Q801



Brass Plate Sector 21



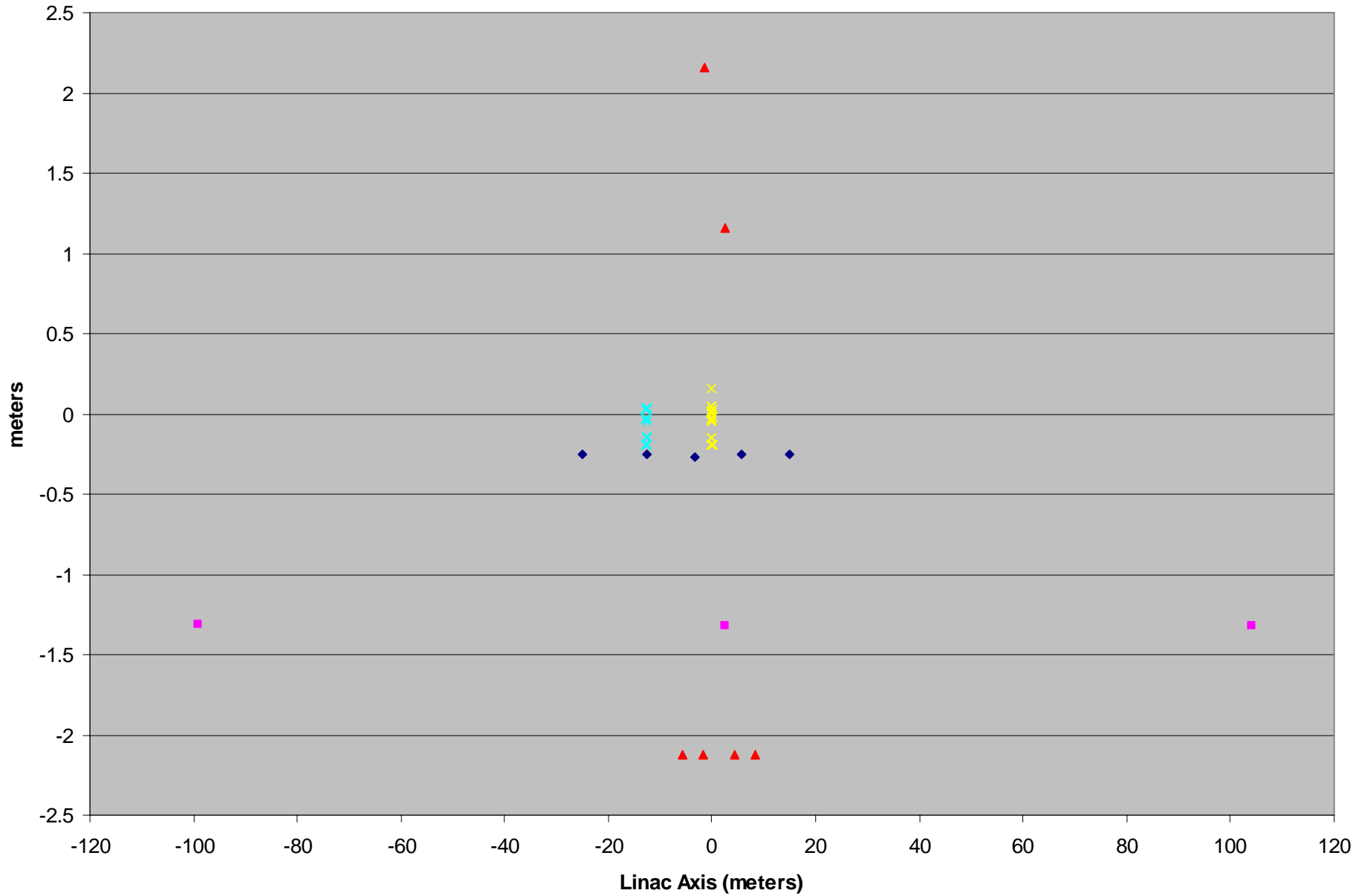
New 3D Monumentation



06-08-04

Alignment Engineering Group

TC2002 Network - Accelerator Plane View



152 Reflectorless Total Station Points

