

SSRL B/L 5
SUMMARY

5/18/04
J.M., H.I., L.G.

MIRROR MASK

MIRROR PLATE

	X	Y		X	Y	Z
A)	-0.002	0	A)	+0.001	-0.001	—
B)	—	0	B)	+0.004	-0.001	+0.001

SLIT

IN VAC. COLLIMATOR

	X	Y	Z	T/B's	X	Y
1)		+0.007	—	u/s)	-0.053	+0.012
2)		+0.007	—	D/S)	-0.065	+0.011
3)		+0.002	—			
4)		+0.013	—			
5)	+0.002	+0.010	-0.122 @ 17.9927M			
6)		+0.010	—			

GRATING ROTATION AXIS

GRATING TANK

T/B's	X	Y	Z	Pitch	X	Y
(+)	—	-0.004	-0.002	+0.023	u/s)	+0.010
(-)	—	-0.008	-0.009	D/S)	+0.003	

ZERO ORDER BAFFLE

	Y
(+)	0
-	-0.002

④

27.359HZ

SSRL B/L5
SET PITCH ON MIRROR
& LIMITS

check
5-17-04
Jm

5/14/04

J. Mc., H. F., L. G.

A) 27.359 C) 4.886 S/R

- 17.777
45.136
40.250

4.886 S/R
4.887

-001 SET

B) 27.359

- 17.773
45.132
42.854 OFFSET FT

2.278 S/R
2.279

SET -001

* WILL SET LIMITS
WITH MOTORS

D) 27.359

17.772

45.131
42.854

2.277 S/R
2.257

FOUND +020

+29

CALIB. OFFSET

4.829

40.250

45.079
2.225

42.854 OFFSET

SSRL B/L5
CHECK PITCH ON MIRROR
PLATE

5/14/04

J.M., H.I., L.G.

Y 27.359 HI

check
S-P-V
SM

$$\begin{array}{r} A) 27.359 \\ - 17.777 \\ \hline \end{array}$$

$$45.34$$

$$40.250$$

$$\hline 4.8865/R$$

$$C) 27.359$$

found \times $4.855 +.031$

lower limit $4.928 -.042$

upper limit $4.774 +.112$

$$4.786 +.100$$

TANK (FOUND AFTER VAC)

$$D) 27.359$$

$$3.885$$

$$\hline 23.474$$

$$1.000$$

$$\hline 22.474$$

$$22.495$$

$$\hline -021$$

$$B) 27.359$$

$$4.232$$

$$\hline 23.127$$

$$1.000$$

$$\hline 22.127$$

$$22.140$$

$$\hline -013$$

MASK 26.305

$$A) 27.359$$

$$(+).054$$

$$\hline 27.305$$

$$1.000$$

$$\hline 26.305$$

$$26.305$$

$$\hline 0$$

$$B) 27.359$$

$$(-).051$$

$$\hline 27.410$$

$$1.000$$

$$\hline 26.410 \text{ 5/R}$$

$$26.410$$

$$\hline 0$$

SSRL B/L 5
5-1/5-2 MO MIRROR

5/11/04
J.M.H.I., Ltd.

(Z)

B) 13.461
D) 13.443
15.000+1
14.725+1
13.000+1
13.356+1
15.071-1 = 14.071 5/R
15.089-1 = 14.089 5/R
28.532

15.250M PUG

15M + 9.843"
18.777
28.620 LOS

B) 28.620
13.461
15.159 ✓
1. —
14.159 5/R ✓
14.158
[+001] ✓

limits

HI =

A
18.235
-17.777
36.012
1. —
35.012
34.992 +020
35.008 +004
18 -006
10 +002

B
18.235
-17.773
36.008
1. —
35.008
34.996 +012
35.014 -006
15 -007
07 +001
35.047 -039 -1mm
34.970 +038 +1mm

C
18.235
-17.777
36.012
1. —
35.012
34.917 +015
35.010
022 -010
15 -003

pitch +/- .075"

SSRL B/L S
5-1/5-2 MO MIRROR

5/11/04
J.M., H.I., L.G.

Ⓚ +15.599 Hz

MIRROR PLATE (BEFORE VACUUM)
(RESET IN "Y" AFTER VAC.)

A)
$$\begin{array}{r} 15.599 \\ -17.777 \\ \hline 33.376 \\ 1. \text{---} \\ \hline 32.376 \text{ s/r} \\ 32.375 \\ \hline \boxed{+0034} \end{array}$$

B)
$$\begin{array}{r} 15.599 \\ -17.773 \\ \hline 33.372 \\ 1. \text{---} \\ \hline 32.372 \text{ s/r} \\ 32.373 \\ \hline \boxed{-10014} \end{array}$$

C)
$$\begin{array}{r} 15.599 \\ -17.777 \\ \hline 33.376 \\ 1. \text{---} \\ \hline 32.376 \text{ s/r} \\ 32.376 \\ \hline \boxed{0} \end{array}$$

Ⓚ +7.114 LOS

A)
$$\begin{array}{r} 7.114 \\ 4.028 \\ \hline 3.086 \\ 1. \text{---} \\ \hline 2.086 \text{ s/r} \\ 2.085 \\ \hline \boxed{+0014} \end{array}$$

B)
$$\begin{array}{r} 7.114 \\ 3.960 \\ \hline 3.154 \\ 1. \text{---} \\ \hline 2.154 \text{ s/r} \\ 2.150 \\ \hline \boxed{+004} \end{array}$$

(Y)

SSRL BL5 MIRROR
5/1/5.2 MØ

HI. LGJM
5-11-64

HBL 6530

HBL 5515
90

HBL 6530 HBL 5515

16.467
40.750

57.217 ✓
- 41.363

15.854 ✓

16.680
40.750

57.430 ✓
- 41.587

15.843 ✓

574.74047 ✓
575.7911 ✓

- 1.05063 m ✓
- 41.363" ✓

574.73478 L
575.7911 ✓

- 1.056320 m ✓
- 41.587" ✓

$\bar{m} = 15.849" HI ✓$

MASK

TANIK
D/S FL.

13.345

14.865
A) 15.849
(+) .054

15.795
1.

14.795 S/R
+30

14.985
B) 15.849
(-) .051

15.900
1.

14.900 S/R
+23

15.849

2.310 RAD

13.539
.47L Slope

13.068 S/R
-23

D/S FL

~~6.954 to 9.2~~
~~- .200~~

6.754 READ

~~Sin 4 x 6.754 = .471~~

MASK

D/S FLANGE

A) 19.685
3.275

16.410
1.

15.410 S/R

19.685
2.310 RAD

17.375 S/R

(Y)

SSRL B/L S
5-1/5-2 MO MIRROR

SETUP 2
5-11-04
J.M.C., L.H.

HBL 6830

16.215

40.750

56.965 ✓

-41.363

15.602 ✓

HBL 5515

16.432

40.750

57.182 ✓

-41.587

15.595 ✓

$\bar{M} = 15.599 \text{ HI}$ ✓

MASIC

A) 15.599
47.054 ✓
15.545 ✓

1. —

14.545 s/r ✓

14.543

+002 ✓

B) 15.599
47.051 ✓
15.650 ✓

1. —

14.650 s/r ✓

14.649

+001 ✓

TANK

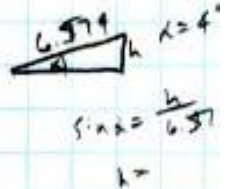
D/S FL) 15.599
2.310 RAD
13.289 ✓

.459 Slope

12.830 s/r ✓

12.825

+005 ✓



6.779 to D/S FL.
- 200 to REAR A

6.579

6.579 x sin 4 =

.459 ✓

(Z)

15.250M PULL

15M + 9.843"

+ 12.010 READING

21.853 LOS FROM 15M ✓

D/S FL. 6.779
1,800 FL. COVER

7.579

21.853

14.274 s/r ✓

1.600 to U/S FACE

15.874 s/r ✓

15.875

-001 ✓

(X)

SSRL B/L S MIRROR
5-1/5-2 MD MIRROR

5/11/04
J.M., L.G.

19.685 LOS
20.000 REF BLADES

.315 = B/L ✓
7.429 BUCKIN

+ 7.114 LOS ✓

5515
16.432 16.215

MASK

TANK

A) 7.114
3.275

3.839 ✓
1. —

2.839 S/R ✓
2.841

-002 ✓

D/S R) 7.114
2.310

4.804 S/R ✓
4.806

-002 ✓

SEE 2

MIRROR PLATE SHEET

A) 7.114
4.028

3.086
1. —

2.086 S/R
1.950

134

B) 7.114
3.960

3.154
1. —

2.154 S/R
7.354

200

LAB DATA
A/B IN FIELD
+ 7.114 LOS

SSRL B/L5
5-1/5-2 MO MIRROR
(NO VACUUM)

5/11/04
J.M.C., L.G., HI

TANK

A)

$$\begin{array}{r} 1.120 \\ 1.250 \\ \hline 2.370 \\ 7.114 \\ \hline \end{array}$$

+4.744

B)

$$\begin{array}{r} 5.871 \\ 1.250 \\ \hline 7.121 \\ 7.114 \\ \hline \end{array}$$

-0.007

C)

$$\begin{array}{r} 5.842 \\ 1.250 \\ \hline 7.092 \\ 7.114 \\ \hline \end{array}$$

+0.022

15.599 HI

A)

$$\begin{array}{r} 10.533 \\ 1.000 \\ \hline 11.533 \\ 15.599 \\ \hline \end{array}$$

+4.066

B)

$$\begin{array}{r} 10.367 \\ 1.000 \\ \hline 11.367 \\ 15.599 \\ \hline \end{array}$$

+4.232

C)

$$\begin{array}{r} 10.546 \\ 1.000 \\ \hline 11.546 \\ 15.599 \\ \hline \end{array}$$

+4.053

D)

$$\begin{array}{r} 10.714 \\ 1.000 \\ \hline 11.714 \\ 15.599 \\ \hline \end{array}$$

+3.885

28.620 LOS FROM 15M = C

A)

$$\begin{array}{r} 27.790 \\ 1.000 \\ \hline 28.790 \\ 28.620 \\ \hline \end{array}$$

-0.170

B)

$$\begin{array}{r} 23.093 \\ 1.000 \\ \hline 24.093 \\ 28.620 \\ \hline \end{array}$$

+4.527

C)

$$\begin{array}{r} 27.833 \\ 1.000 \\ \hline 28.833 \\ 28.620 \\ \hline \end{array}$$

-0.213