

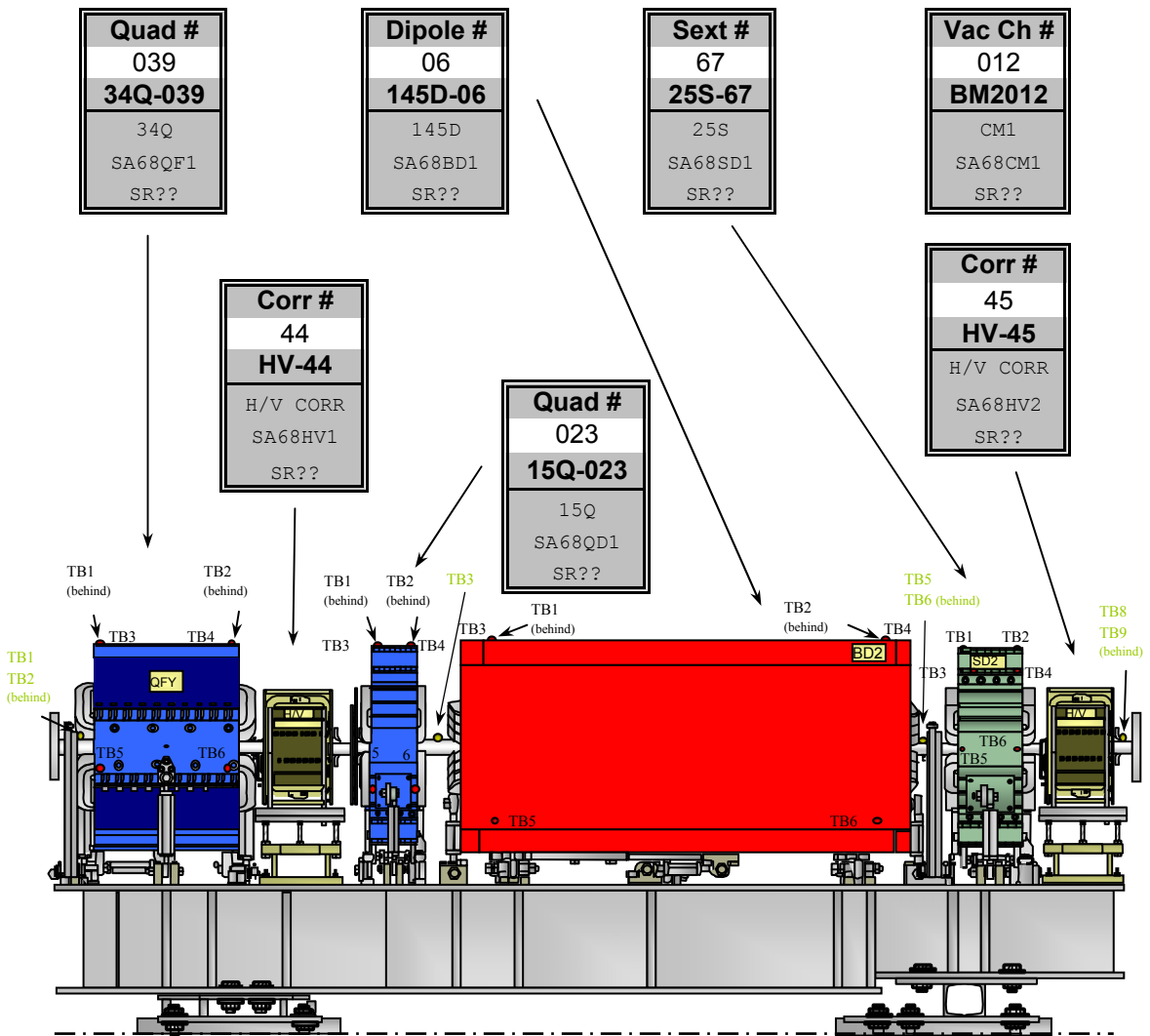
Raft Description:

**Date** November 5, 2002

<b>Raft #</b> 68 145D-68	<b>Type</b> 1 145D T-1	<b>Bld. 750 Name</b> SA68	<b>S3 Ring Name</b> SR??
--------------------------------	------------------------------	------------------------------	-----------------------------

**Notes:**

The above date represents the latest fiducial date of all components listed below.



**Quadrupole: Fiducial Values for Upstream (34Q) Quadrupole**

Fiducial	Z	X	Y
TB1	-6.322	11.253	16.200
TB2	6.336	11.253	16.202
TB3	-6.325	-11.254	16.200
TB4	6.325	-11.249	16.205
TB5	-5.218	-15.199	-4.718
TB6	4.497	-15.197	-4.718

inches inches inches

QUADRUPOLE  
**34Q-039**

SA68QF1  
SR??

**9/6/01**

**Description:**  
Fiducials based on values posted on web-page. (Check for updates.)

**Vacuum Chamber: Fiducial Values for BM2 Vacuum Chamber**

Fiducial	Z	X	Y
TB1	-77.256	-6.254	4.362
TB2	-77.238	7.229	4.377
TB3	-34.859	0.050	4.370
TB4	0.315	3.852	2.374
TB5	34.461	-4.634	4.372
TB6	35.844	2.431	4.374
TB7	53.879	-4.288	2.409
TB8	58.020	-12.419	2.923
TB9	60.978	3.021	2.956
TB0	N/A	N/A	N/A

inches inches inches

VACUUM CHAMBER  
**BM2012**

SA68CM1  
SR??

**11/5/02**

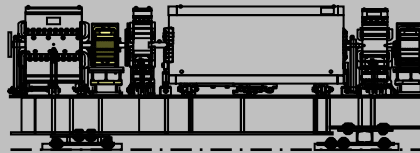
**Description:**  
Fiducials based on values posted on web-page. (Check for updates.)

**HV1 Corrector: Fiducial Values for Corrector**

Fiducial	Z	X	Y
1	-0.003	-0.323	-10.196
2	-0.002	-10.046	-10.205
A	0.000	-20.003	0.000
B	0.000	-20.003	0.000
C	0.000	-20.003	0.000
D	0.000	-20.003	0.000
E	0.000	0.000	17.935
F	0.000	0.000	17.935

inches inches inches

**HV1 CORRECTOR  
HV-44**



SA68HV1  
SR??

No Date

**Description:**

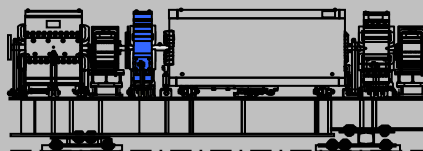
Fiducials based on known nominal values.

**Quadrupole: Fiducial Values for Upstream (15Q) Quadrupole**

Fiducial	Z	X	Y
TB1	-2.575	11.225	16.203
TB2	2.567	11.235	16.203
TB3	-2.560	-11.230	16.200
TB4	2.560	-11.252	16.199
TB5	-1.502	-15.198	-4.867
TB6	2.443	-15.201	-4.905

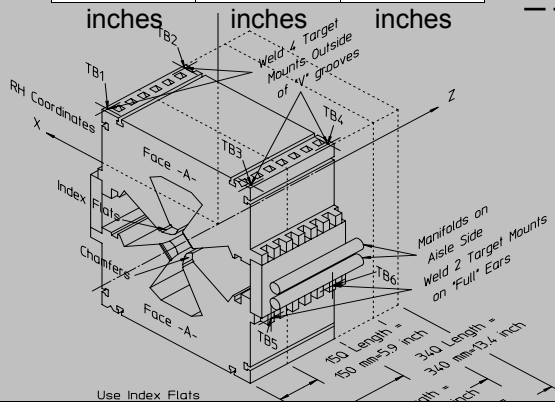
inches inches inches

**QUADRUPOLE  
15Q-023**



SA68QD1  
SR??

9/7/01



**Description:**

Fiducials based on values posted on web-page. (Check for updates.)

**Gradient Dipole: Fiducial Values for Dipole (145D)**

Fiducial	Z	X	Y
TB1	-26.544	3.424	17.006
TB2	26.573	3.434	17.007
TB3	-26.542	-22.416	16.995
TB4	26.536	-22.411	17.007
TB5	-26.353	-24.269	-11.635
TB6	26.453	-24.275	-11.588

inches inches inches

**GRADIENT DIPOLE**  
**145D-06**

SA68BD1  
SR??

6/5/01

**Description:**  
Fiducials based on values posted on web-page. (Check for updates.)

**Sextupole: Fiducial Values for 25S Sextupole**

Fiducial	Z	X	Y
TB1	-4.326	4.224	15.508
TB2	4.314	4.204	15.508
TB3	-4.443	-10.495	12.540
TB4	3.438	-10.543	12.513
TB5	-4.552	-15.060	0.021
TB6	4.559	-15.067	0.040

inches inches inches

**SEXTUPOLE**  
**25S-67**

SA68SD1  
SR??

11/27/01

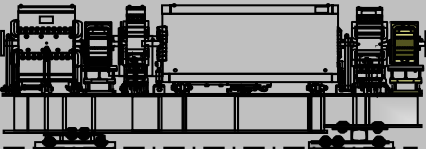
**Description:**  
Fiducials based on values posted on web-page. (Check for updates.)

**HV2 Corrector: Fiducial Values for Corrector**

Fiducial	Z	X	Y
1	-0.003	-0.323	-10.196
2	-0.002	-10.046	-10.205
A	0.000	-20.003	0.000
B	0.000	-20.003	0.000
C	0.000	-20.003	0.000
D	0.000	-20.003	0.000
E	0.000	0.000	17.935
F	0.000	0.000	17.935

inches          inches          inches

**HV2 CORRECTOR**  
**HV-45**



SA68HV2  
SR??

No Date

**Description:**  
Fiducials based on known nominal values.

**Building 750 Deck: Positions of Component Origins**

750 Name	Z	X	Y	Yaw
SA68QF1	-4.114	-3.811	0.000	10.5882
SA68QD1	-3.485	-3.694	0.000	10.5882
SA68CM1	-2.450	-3.500	0.000	10.5882
SA68BD1	-2.447	-3.534	0.000	5.2941
SA68SD1	-1.367	-3.500	0.000	0.0000

meters          meters          meters          degrees

Date of Deck File: March 10, 2003

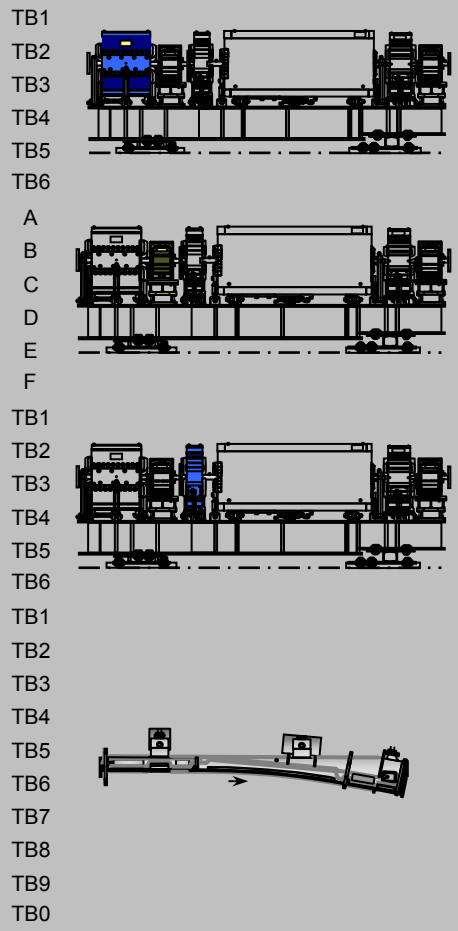
Location of Raft: WEST 145D-68

**Description:**  
Deck coordinates representing origin of the specific component's coordinate system.

**Building 750 As-Built: (TABLE 1 of 2)**

750 Name	delta Z	delta X	delta Y ( delta H )
SA68QF1	0.003	0.004	0.000
	0.009	-0.005	0.001
	-0.005	0.006	0.002
	-0.006	-0.001	-0.003
	-0.030	0.002	0.002
	-0.030	-0.001	-0.004
SA68HV1		-0.005	
		-0.002	
		-0.008	
		-0.003	
			0.006
			0.006
SA68QD1	0.005	-0.005	0.005
	0.009	-0.010	0.002
	-0.006	0.002	0.003
	-0.006	-0.004	-0.002
	N/A	N/A	N/A
SA68CM1	-0.032	0.001	-0.002
	0.003	0.004	3.001
	-0.002	-0.002	0.000
	-0.003	0.008	-0.004
	-0.004	0.008	0.000
	-0.006	-0.003	0.000
	-0.007	0.000	0.003
	0.000	0.000	0.000
	-0.008	-0.004	-0.002
	-0.008	-0.010	-0.012
	N/A	N/A	N/A

inches inches inches



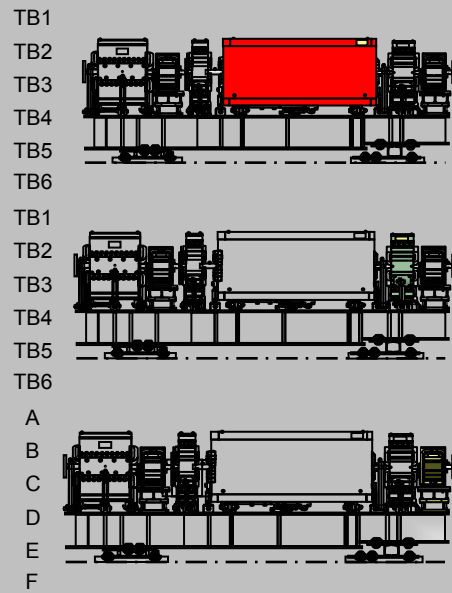
Latest File Date: February 24, 2003

**145D-68**

**Description:**  
 Values representing the difference between the design and actual fiducial measurements.

**Building 750 As-Built: (TABLE 2 of 2)**

750 Name	delta Z	delta X	delta Y ( delta H )
SA68BD1	0.003	-0.002	0.000
	-0.003	0.000	-0.002
	0.003	0.002	-0.002
	-0.001	0.009	-0.003
	0.000	0.006	0.002
	-0.008	0.009	-0.010
SA68SD1	-0.007	-0.006	0.002
	-0.013	-0.006	0.001
	0.009	-0.010	-0.002
	0.010	0.000	-0.001
	0.014	-0.005	-0.001
	0.013	0.001	-0.002
SA68HV2		-0.006	
		0.004	
		-0.001	
		-0.005	
			0.009
			0.007
	inches	inches	inches



Latest File Date: February 24, 2003

**145D-68**

**Description:**

Values representing the difference between the design and actual fiducial measurements.