

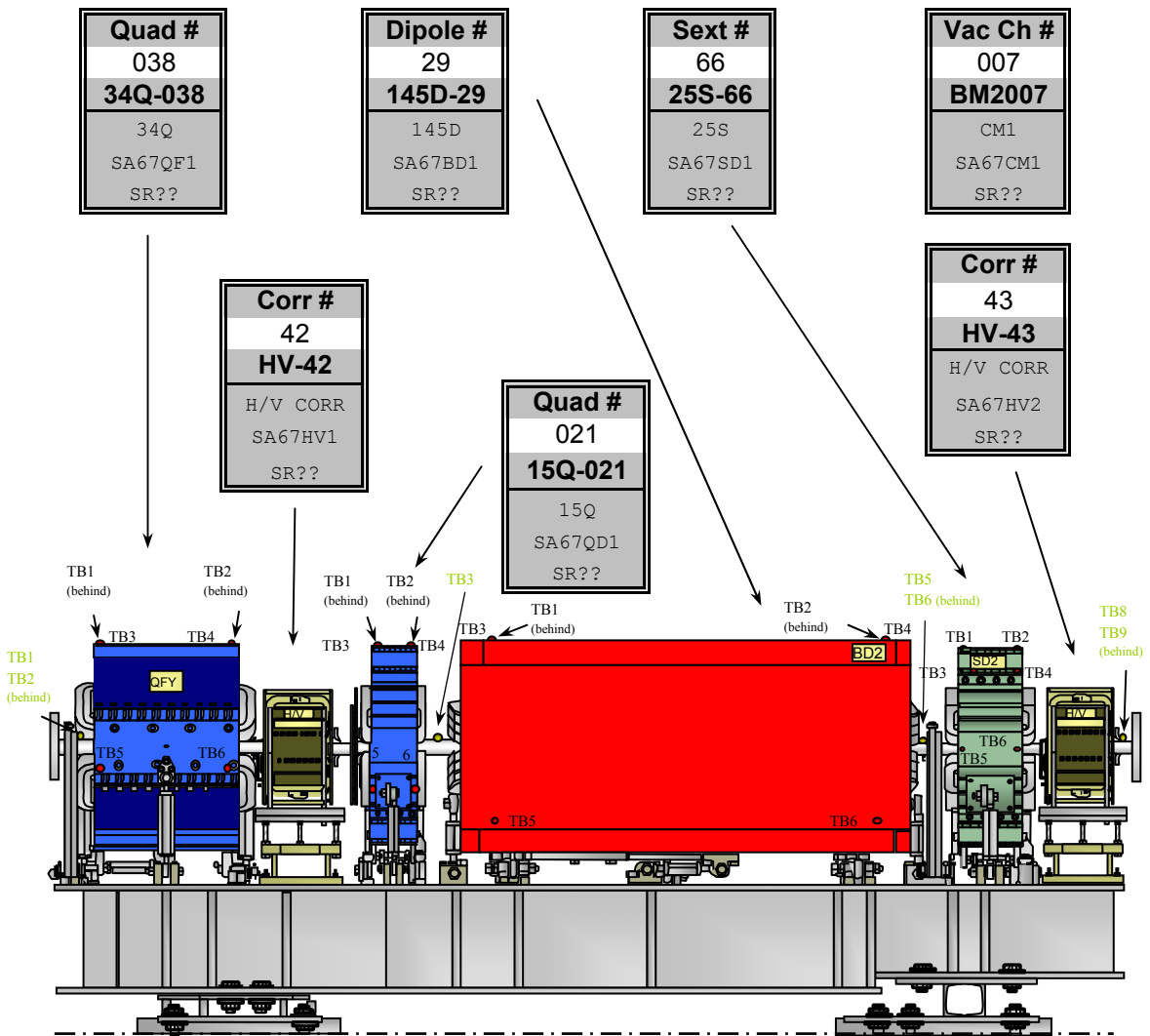
Raft Description:

**Date** November 7, 2002

<b>Raft #</b> 67 145D-67	<b>Type</b> 1 145D T-1	<b>Bld. 750 Name</b> SA67	<b>S3 Ring Name</b> SR??
--------------------------------	------------------------------	------------------------------	-----------------------------

**Notes:**

The above date represents the latest fiducial date of all components listed below.



**Quadrupole: Fiducial Values for Upstream (34Q) Quadrupole**

Fiducial	Z	X	Y
TB1	-6.321	11.240	16.203
TB2	6.285	11.226	16.201
TB3	-6.302	-11.225	16.200
TB4	6.294	-11.220	16.198
TB5	-5.178	-15.201	-4.824
TB6	4.642	-15.198	-4.799

inches      inches      inches

QUADRUPOLE  
**34Q-038**

SA67QF1  
SR??

**9/6/01**

**Description:**  
Fiducials based on values posted on web-page. (Check for updates.)

**Vacuum Chamber: Fiducial Values for BM2 Vacuum Chamber**

Fiducial	Z	X	Y
TB1	-77.138	-6.184	4.375
TB2	-77.196	7.259	4.366
TB3	-34.881	-0.026	4.373
TB4	0.341	3.832	2.378
TB5	34.513	-4.579	4.380
TB6	35.818	2.401	4.390
TB7	53.881	-4.274	2.445
TB8	58.078	-12.400	2.971
TB9	61.007	2.999	2.975
TB0	N/A	N/A	N/A

inches      inches      inches

VACUUM CHAMBER  
**BM2007**

SA67CM1  
SR??

**11/7/02**

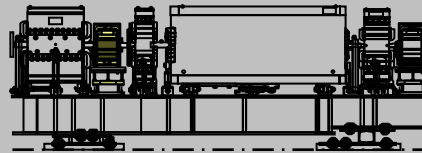
**Description:**  
Fiducials based on values posted on web-page. (Check for updates.)

**HV1 Corrector: Fiducial Values for Corrector**

Fiducial	Z	X	Y
1	-0.003	-0.323	-10.196
2	-0.002	-10.046	-10.205
A	0.000	-20.003	0.000
B	0.000	-20.003	0.000
C	0.000	-20.003	0.000
D	0.000	-20.003	0.000
E	0.000	0.000	17.935
F	0.000	0.000	17.935

inches          inches          inches

**HV1 CORRECTOR  
HV-42**



SA67HV1  
SR??

No Date

**Description:**

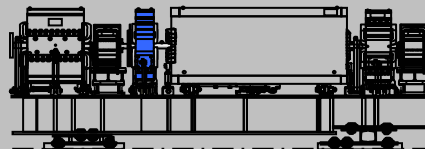
Fiducials based on known nominal values.

**Quadrupole: Fiducial Values for Upstream (15Q) Quadrupole**

Fiducial	Z	X	Y
TB1	-2.573	11.225	16.199
TB2	2.563	11.244	16.200
TB3	-2.571	-11.245	16.200
TB4	2.570	-11.234	16.197
TB5	-1.511	-15.198	-4.847
TB6	2.487	-15.199	-4.884

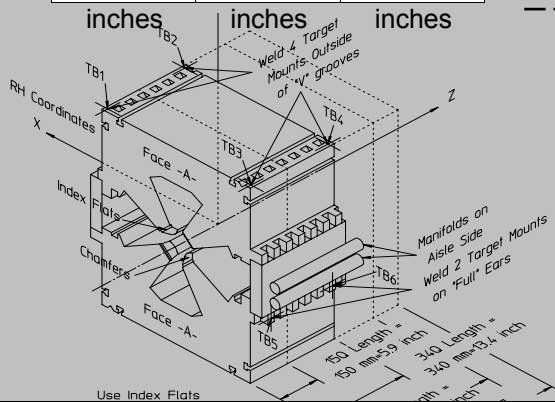
inches          inches          inches

**QUADRUPOLE  
15Q-021**



SA67QD1  
SR??

10/19/01



**Description:**

Fiducials based on values posted on web-page. (Check for updates.)

**Gradient Dipole: Fiducial Values for Dipole (145D)**

Fiducial	Z	X	Y
TB1	-26.531	3.438	16.996
TB2	26.604	3.397	16.996
TB3	-26.555	-22.420	16.995
TB4	26.579	-22.436	16.997
TB5	-26.467	-24.246	-11.630
TB6	26.521	-24.242	-11.559

inches      inches      inches

**GRADIENT DIPOLE**

**145D-29**

SA67BD1  
SR??

**10/26/01**

**Description:**  
Fiducials based on values posted on web-page. (Check for updates.)

**Sextupole: Fiducial Values for 25S Sextupole**

Fiducial	Z	X	Y
TB1	-4.241	4.215	15.512
TB2	4.319	4.182	15.507
TB3	-4.403	-10.488	12.543
TB4	3.461	-10.506	12.534
TB5	-4.581	-15.059	0.050
TB6	4.519	-15.064	0.030

inches      inches      inches

**SEXTUPOLE**

**25S-66**

SA67SD1  
SR??

**8/24/01**

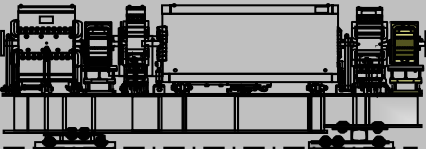
**Description:**  
Fiducials based on values posted on web-page. (Check for updates.)

**HV2 Corrector: Fiducial Values for Corrector**

Fiducial	Z	X	Y
1	-0.003	-0.323	-10.196
2	-0.002	-10.046	-10.205
A	0.000	-20.003	0.000
B	0.000	-20.003	0.000
C	0.000	-20.003	0.000
D	0.000	-20.003	0.000
E	0.000	0.000	17.935
F	0.000	0.000	17.935

inches          inches          inches

**HV2 CORRECTOR  
HV-43**



SA67HV2  
SR??

No Date

**Description:**  
Fiducials based on known nominal values.

**Building 750 Deck: Positions of Component Origins**

750 Name	Z	X	Y	Yaw
SA67QF1	-4.114	-0.311	0.000	10.5882
SA67QD1	-3.485	-0.194	0.000	10.5882
SA67CM1	-2.450	0.000	0.000	10.5882
SA67BD1	-2.447	-0.034	0.000	5.2941
SA67SD1	-1.367	0.000	0.000	0.0000

meters          meters          meters          degrees

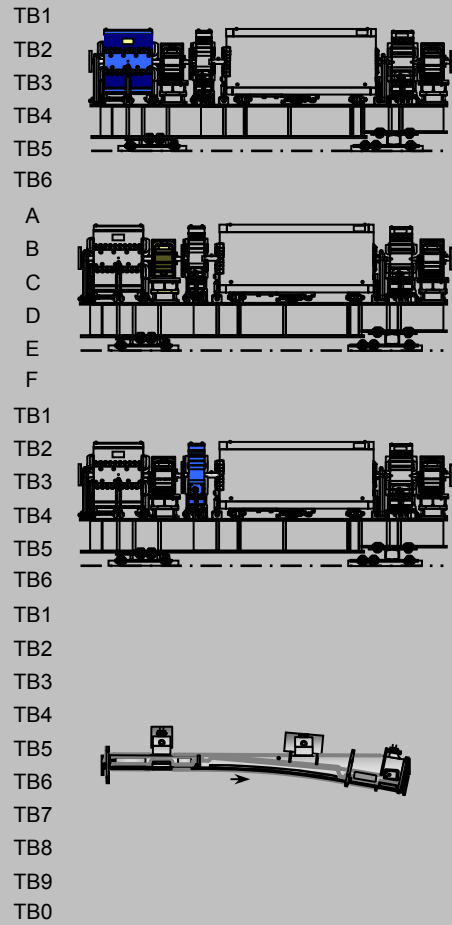
Date of Deck File: March 10, 2003

Location of Raft: EAST **145D-67**

**Description:**  
Deck coordinates representing origin of the specific component's coordinate system.

**Building 750 As-Built: (TABLE 1 of 2)**

750 Name	delta Z	delta X	delta Y ( delta H )
SA67QF1	-0.001	-0.002	-0.002
	0.004	-0.002	-0.004
	-0.002	-0.001	-0.001
	0.000	0.000	-0.004
	-0.010	-0.003	0.000
	-0.012	-0.004	-0.008
SA67HV1		-0.017	
		-0.013	
		-0.013	
		-0.025	
			-0.004
			-0.005
SA67QD1	0.002	0.001	0.003
	0.003	0.000	-0.002
	-0.023	0.005	0.005
	-0.022	-0.001	-0.003
	0.000	0.000	0.000
	-0.053	-0.002	-0.004
SA67CM1	0.043	0.014	2.999
	0.010	0.005	-0.001
	0.008	0.022	-0.003
	0.006	0.016	-0.001
	-0.004	0.005	0.001
	-0.003	0.002	-0.001
	0.000	0.000	0.000
	-0.005	-0.010	0.012
	-0.005	-0.012	-0.010
	N/A	N/A	N/A
	inches	inches	inches



Latest File Date: February 20, 2003

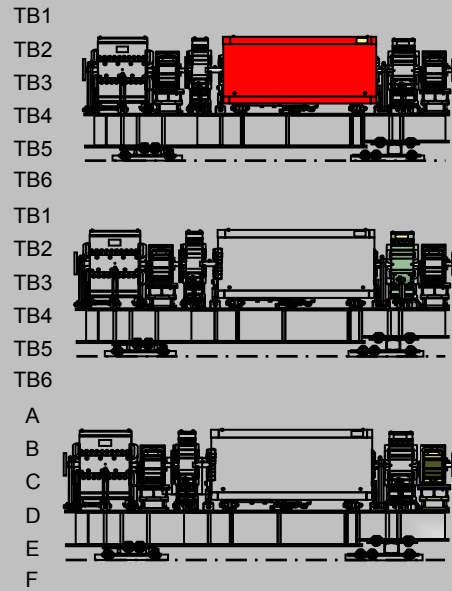
**145D-67**

**Description:**

Values representing the difference between the design and actual fiducial measurements.

**Building 750 As-Built: (TABLE 2 of 2)**

750 Name	delta Z	delta X	delta Y ( delta H )
SA67BD1	0.009	0.001	0.004
	0.004	0.000	0.003
	0.011	0.000	0.008
	0.002	-0.004	-0.001
	0.005	0.002	0.007
	-0.001	-0.004	0.001
SA67SD1	0.002	0.003	-0.002
	0.001	0.004	0.002
	-0.001	-0.001	0.000
	-0.008	-0.003	0.003
	-0.004	-0.003	0.001
	-0.006	-0.001	-0.002
SA67HV2		-0.008	
		0.004	
		-0.006	
		0.004	
			0.006
			0.006
	inches	inches	inches



Latest File Date: February 19, 2003

**145D-67**

**Description:**

Values representing the difference between the design and actual fiducial measurements.