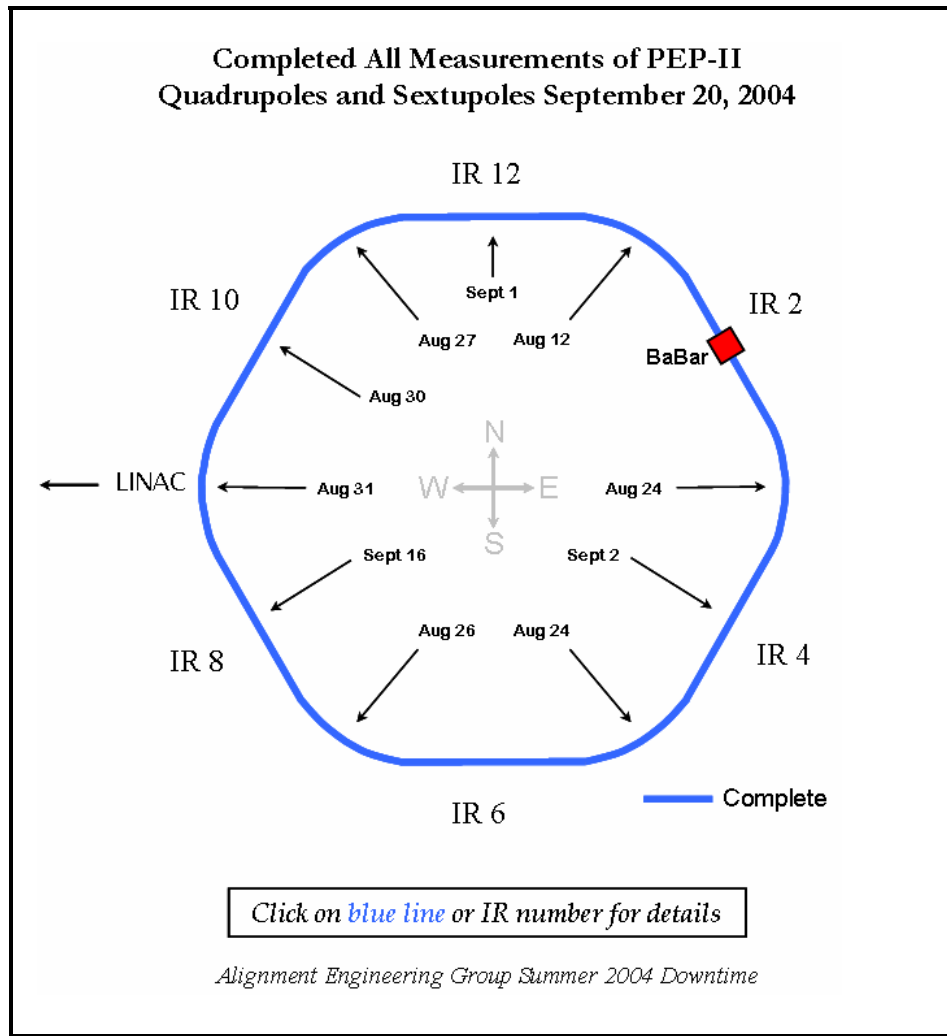


Summer / Fall 2004 Downtime AEG Week 8 Summary

PEP-II Quadrupole & Sextupole Survey

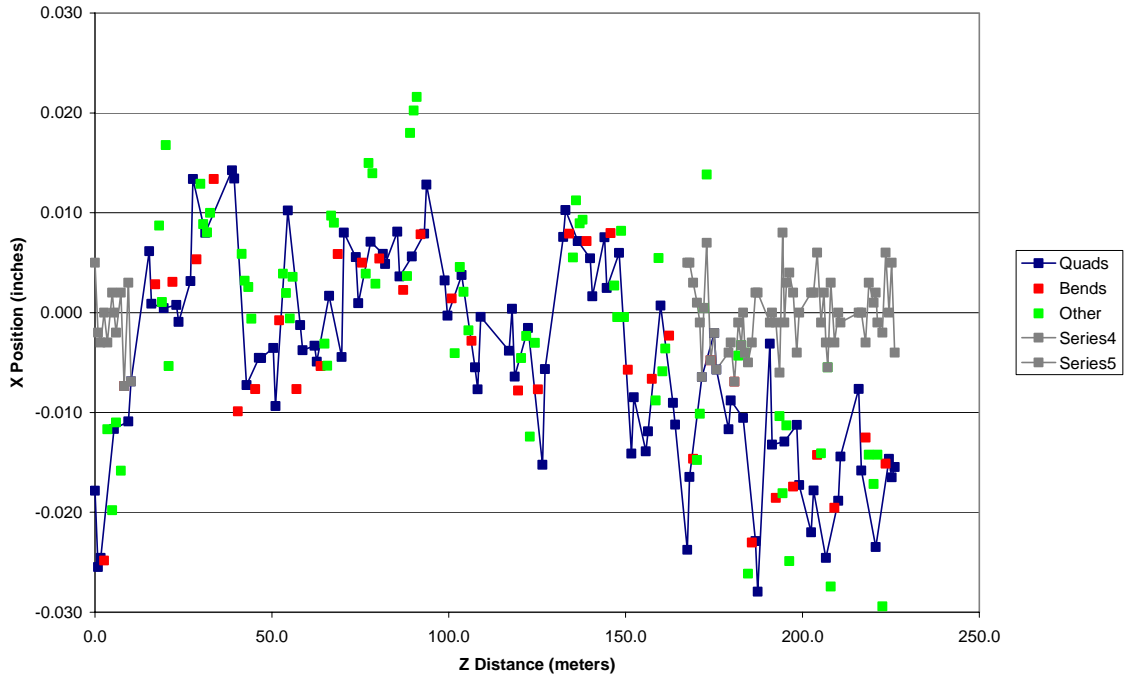
- Monday September 20: last magnets observed



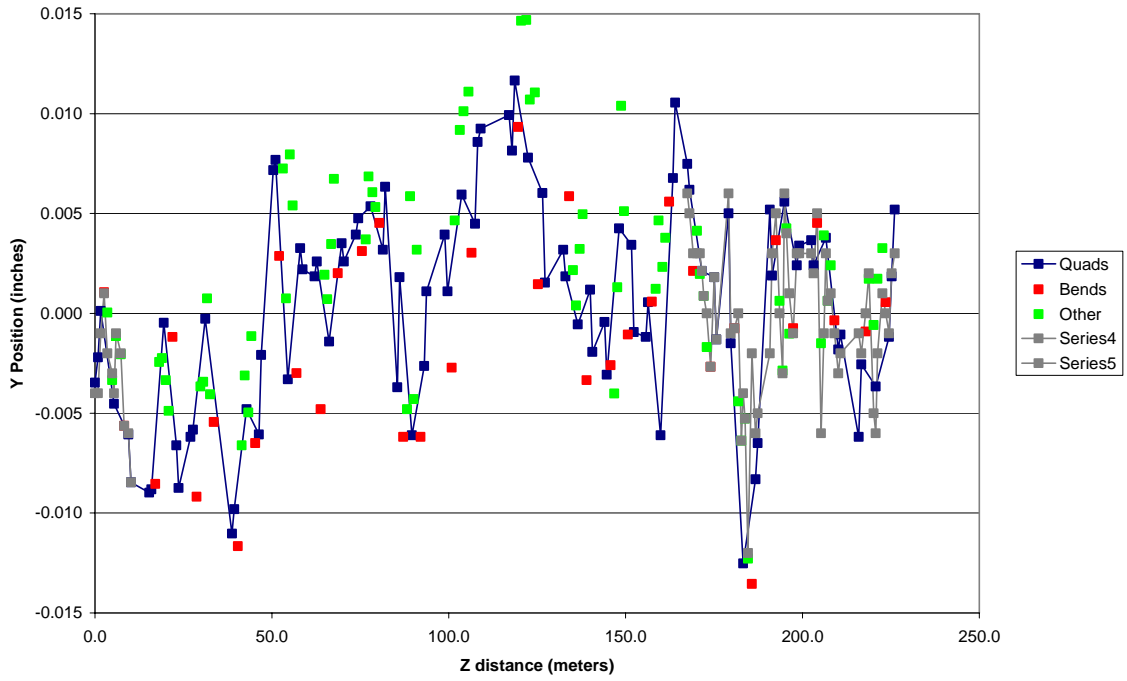
SPEAR3 Alignment

- Monday September 20
 - o All the necessary magnets were moved in X from cell 14 to cell 1. Here are the updated graphs:

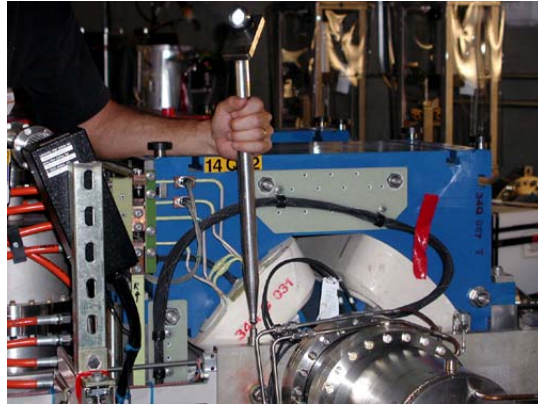
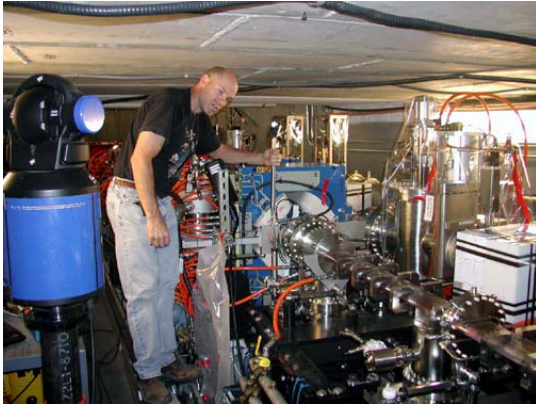
Magnet X As Builts



Magnet Y As Builts



- Start moving the vacuum chambers using the sphere fitting technique as well as re-mapping the areas with moves.



- Tuesday September 21

- Move vacuum chambers using and map cells 16 and 17.
- Set BPM mask in BL5 in alcove.

- Wednesday September 22

- Finish moving vacuum chambers and map cells 18 and 1.



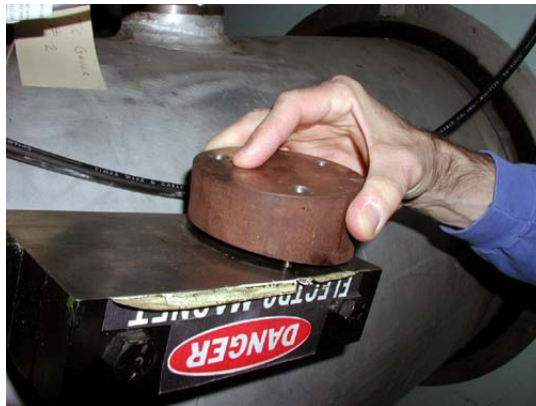
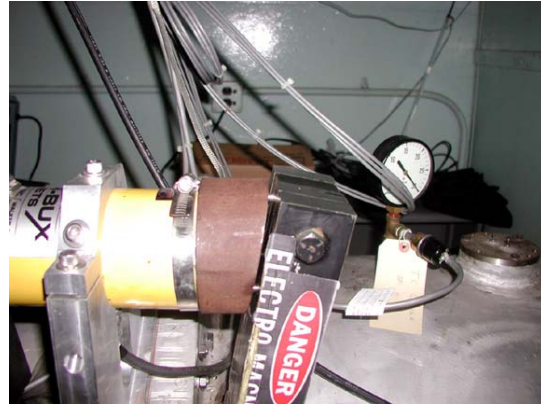
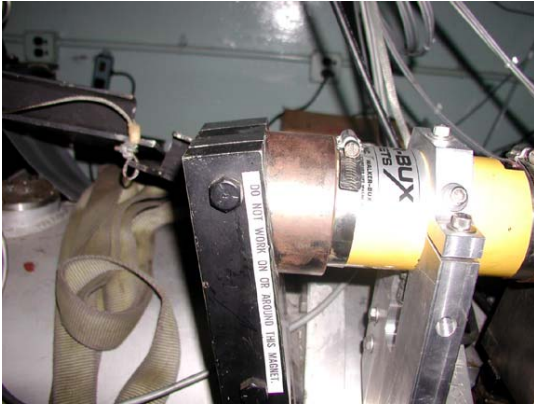
- Look at BL9 possible plug line additions. Get back about 150 new plugs from our brass supplies.

- Friday September 24

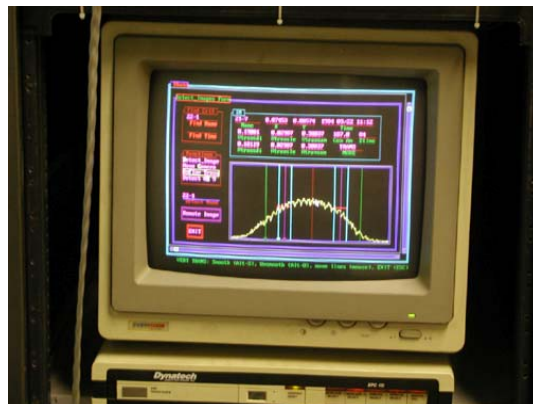
- Set scrapers in 1S.
- Put brass plugs in BL9.
- Set pivot mask in BL6

Linac Laser Alignment System

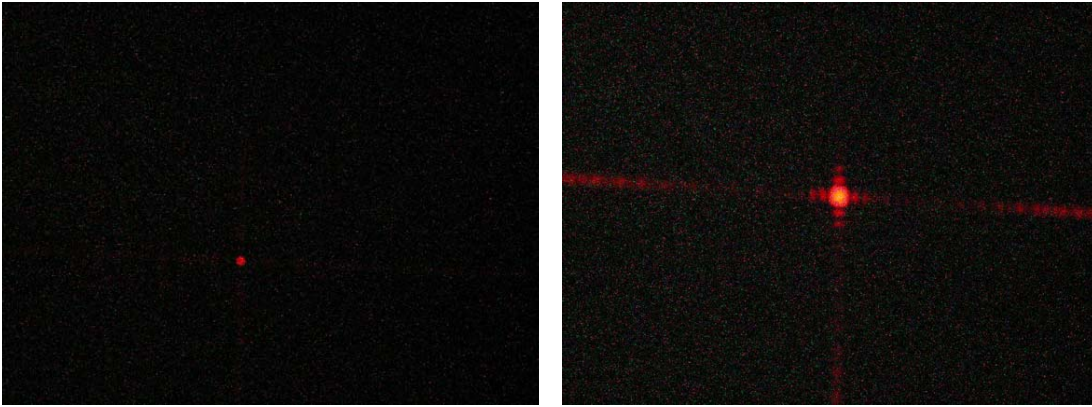
- Monday September 20
 - o Still waiting.
- Tuesday September 21
 - o Vacuum is OK. Needed to work on the flap to make them operational. Measure targets from sector 11 to 15.



- Wednesday September 22
 - o Measure targets in sectors 16 to 19, 21 and 22 as well as 23-1 and 23-2.



- Thursday September 23
 - Measure targets from 23-3 to 28-2
 - Experiment with digital picture of target on paper screen in front of camera (2-9 [near to camera] and 28-1 [far to camera] targets).



Miscellaneous

- Monday September 20
 - SSRL Vacuum: BL4-2 vertical slits
- Tuesday September 21
 - SSRL Vacuum: BL4-2 vertical slits
 - ESA align table and laser to beam pipe

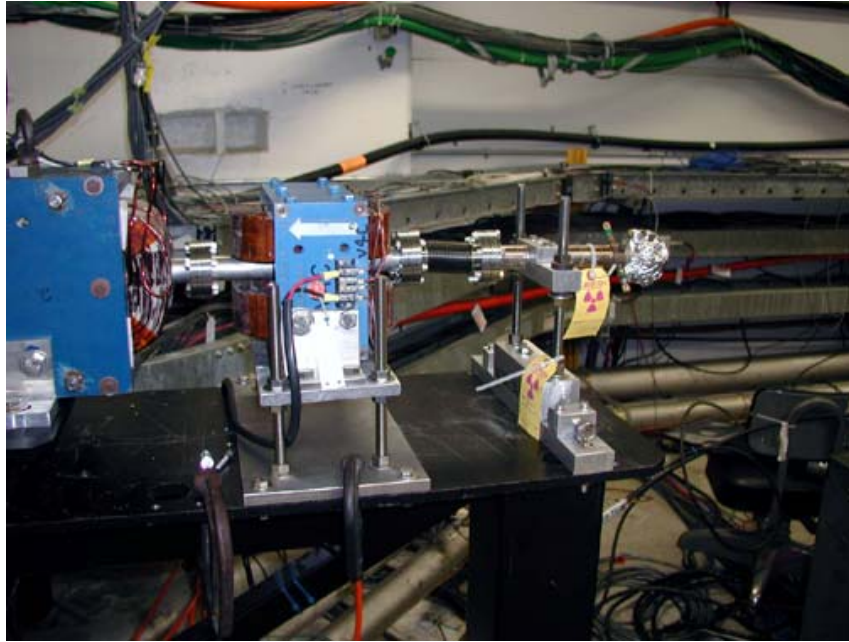




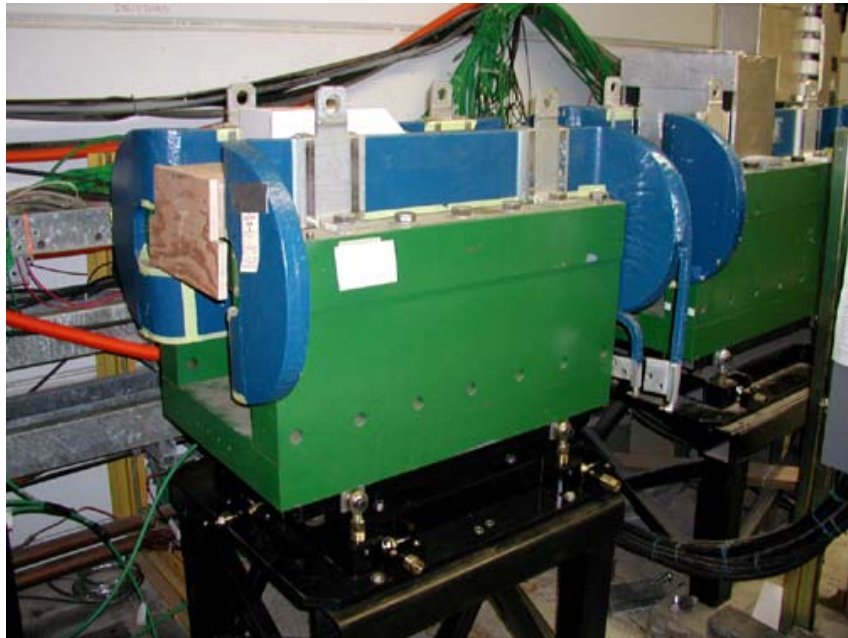
- Thursday September 23
 - FFTB E166
 - Set height and scribe line on table



- Mark bolt pattern on the 2 tables
- Set BPM upstream



- SSRL Vacuum: wait for BL6 M2 mirror fiducialization.
 - SSRL Vacuum: 1S scraper fiducialization.
 - Finish block survey of SPEAR3 ring.
 - PEP SLM R7: discuss alignment requirements and gather drawings.
- Friday September 24
- FFTB E166: set bend magnet downstream of the 6 existing bends.



- PEP SLM R7: prepare files for field work next Monday.