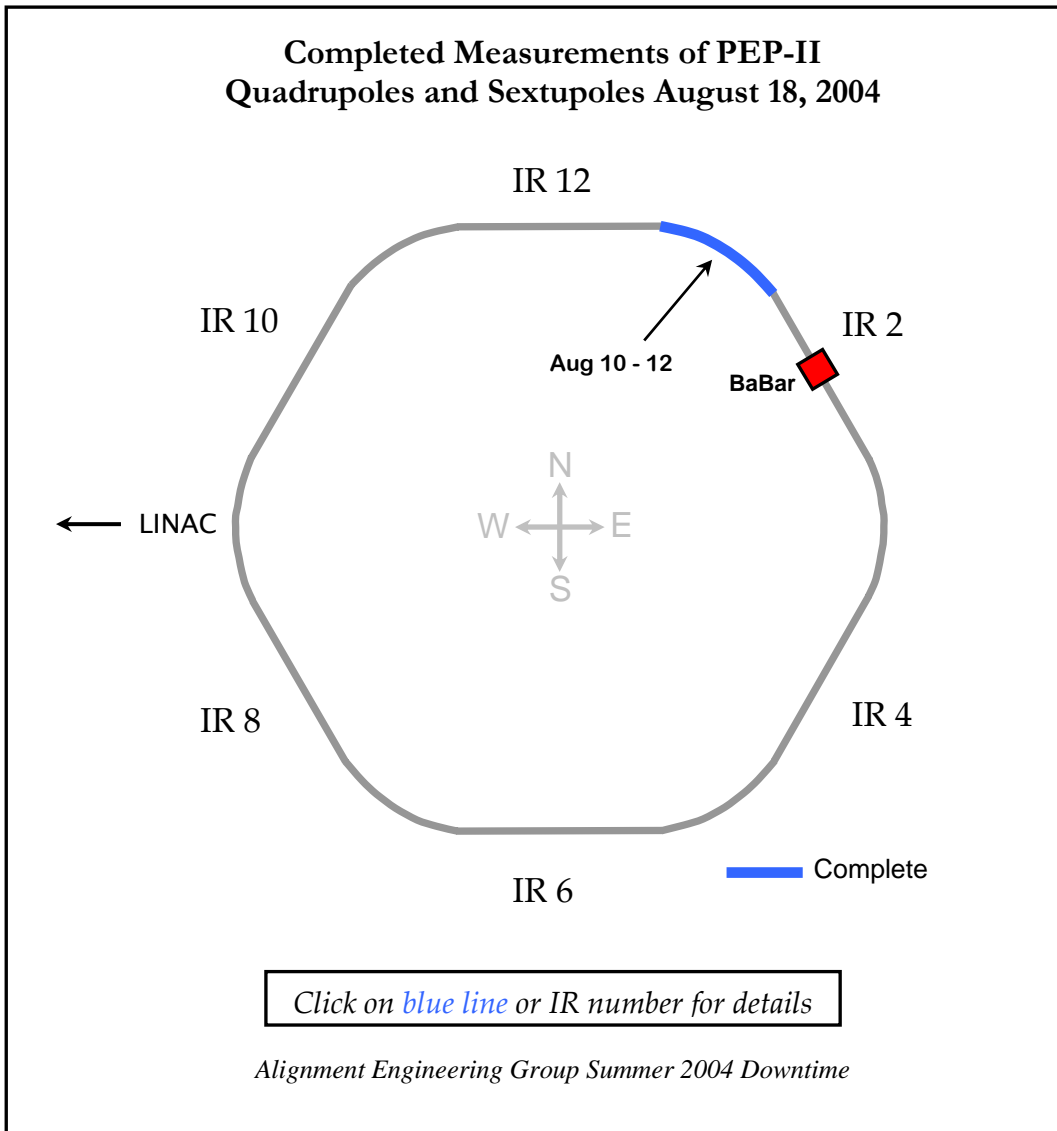


Summer / Fall 2004 Downtime
AEG Week 3 Summary

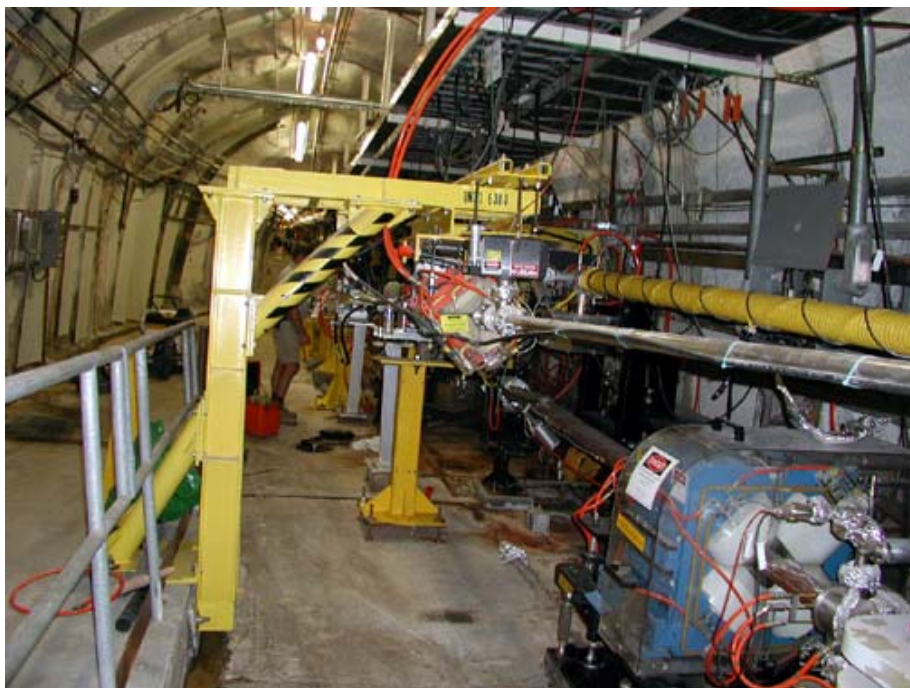
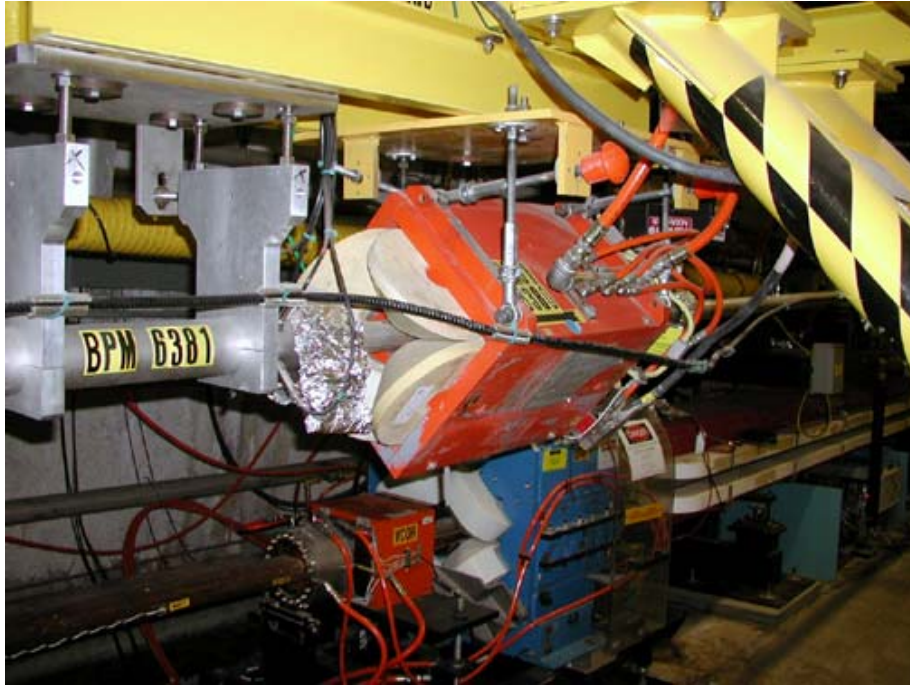
PEP-II Quadrupole & Sextupole Survey

- Monday August 16
 - o Continue mapping R5
- Friday August 20
 - o Continue mapping R5
 - o Start mapping R3



PEPII HER Injection Line

- Monday August 16
 - o 6 TC2002 set-ups to read components from QM29 to QMR2. Move the bend BLP- and try to move QM31 but had problem with support.



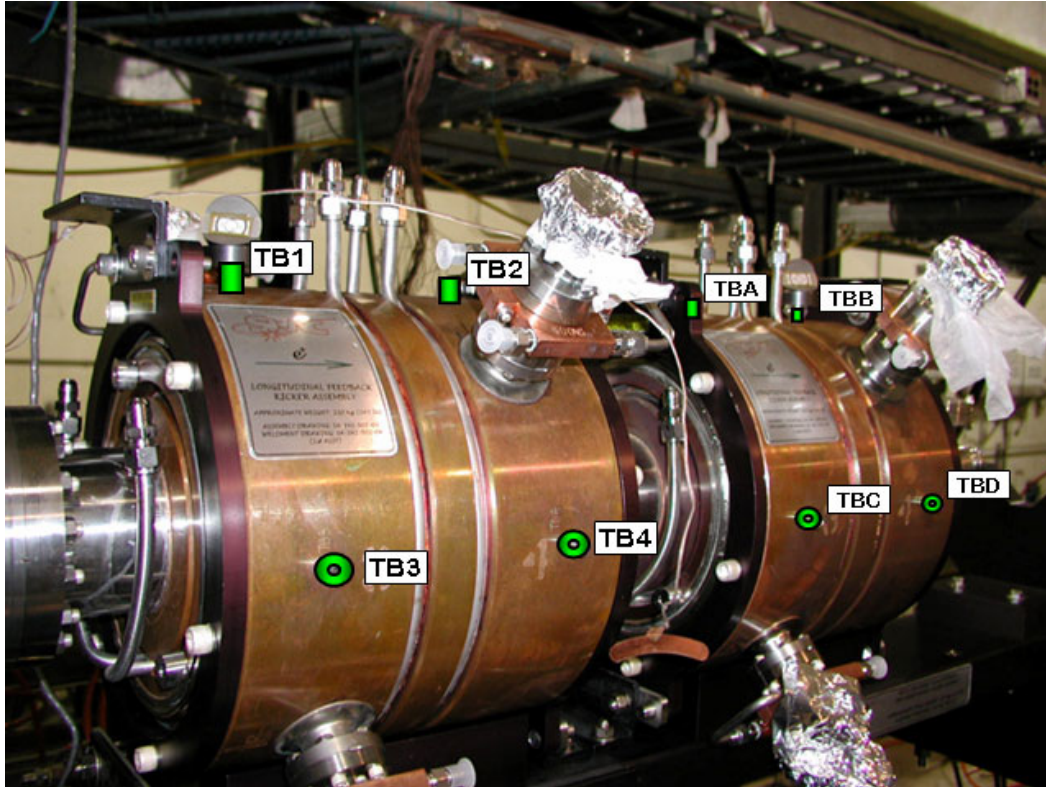
- Thursday August 19
 - o Move QM31 after exchange of rod support

		Z (in)	X (in)	Y (in)
QM29	HM06QU91	-0.036	0.129	-0.014
	HM06QU92	-0.029	0.152	-0.017
	HM06QU94	-0.030	0.127	-0.026
QM30	HM07QU01	-0.071	0.152	-0.009
	HM07QU02	-0.061	0.150	-0.008
	HM07QU03	-0.072	0.145	-0.027
	HM07QU04	-0.072	0.139	-0.030
QM31	HM07QU11	-0.042	0.144	0.015
	HM07QU12	-0.027	0.147	0.016
	HM07QU14	-0.039	0.141	0.016
	HM07BDAA	-0.031	0.145	0.036
	HM07BDAB	-0.025	0.150	0.032
	HM07BDAC	-0.021	0.143	0.039
	HM07BDAD	-0.023	0.148	0.034
QM32	HM07QU21	-0.060	0.156	0.034
	HM07QU22	-0.043	0.158	0.039
	HM07QU24	-0.073	0.150	0.044
	HM07BDB1	-0.021	0.166	0.051
	HM07BDB2	-0.010	0.169	0.050
	HM07BDB3	-0.018	0.155	0.030
	HM07BDB4	-0.005	0.156	0.029
	HM07BDC1	-0.051	0.173	0.047
	HM07BDC2	-0.051	0.164	0.042
	HM07BDC3	-0.051	0.177	0.042
	HM07BDC4	-0.053	0.173	0.042
	HM07BDDA	-0.039	0.166	0.047
	HM07BDDB	-0.039	0.162	0.056
	HM07BDDC	-0.031	0.163	0.051
	HM07BDDE	-0.033	0.161	0.065
QMR1	HM08QU11	-0.029	0.150	0.029
	HM08QU12	-0.019	0.159	0.031
	HM08QU13	-0.026	0.148	0.040
	HM08QU14	-0.017	0.153	0.042
QMR2	HM08QU21	-0.003	0.165	0.025
	HM08QU22	-0.003	0.173	0.016
	HM08QU23	-0.008	0.157	0.030
	HM08QU24	-0.001	0.161	0.020

PEPII LER R4 kicker

- Wednesday August 18
 - o Set Frascati kicker

This longitudinal kicker is actually made of two modules. Each module had been fiducialized individually on the CMM. Then the 2 modules were bolted together. In the field, 2 TBs on one module and 1 on the other were used to set the kicker. Then some other TBs were read. See table below:



	Z (in)	X (in)	Y (in)	Z (mm)	X (mm)	Y (mm)
BL4BLK11	-0.014	0.001	-0.008	-0.4	0.0	-0.2
BL4BLK12	-0.009	0.020	0.034	-0.2	0.5	0.9
BL4BLK13	0.036	-0.003	-0.002	0.9	-0.1	-0.1
BL4BLK14	0.030	-0.002	0.037	0.8	-0.1	0.9
BL4BLK1A	0.005	-0.113	0.078	0.1	-2.9	2.0
BL4BLK1B	0.000	-0.114	0.116	0.0	-2.9	2.9
BL4BLK1C	0.044	0.006	-0.037	1.1	0.2	-0.9
BL4BLK1D	0.050	-0.001	-0.003	1.3	0.0	-0.1

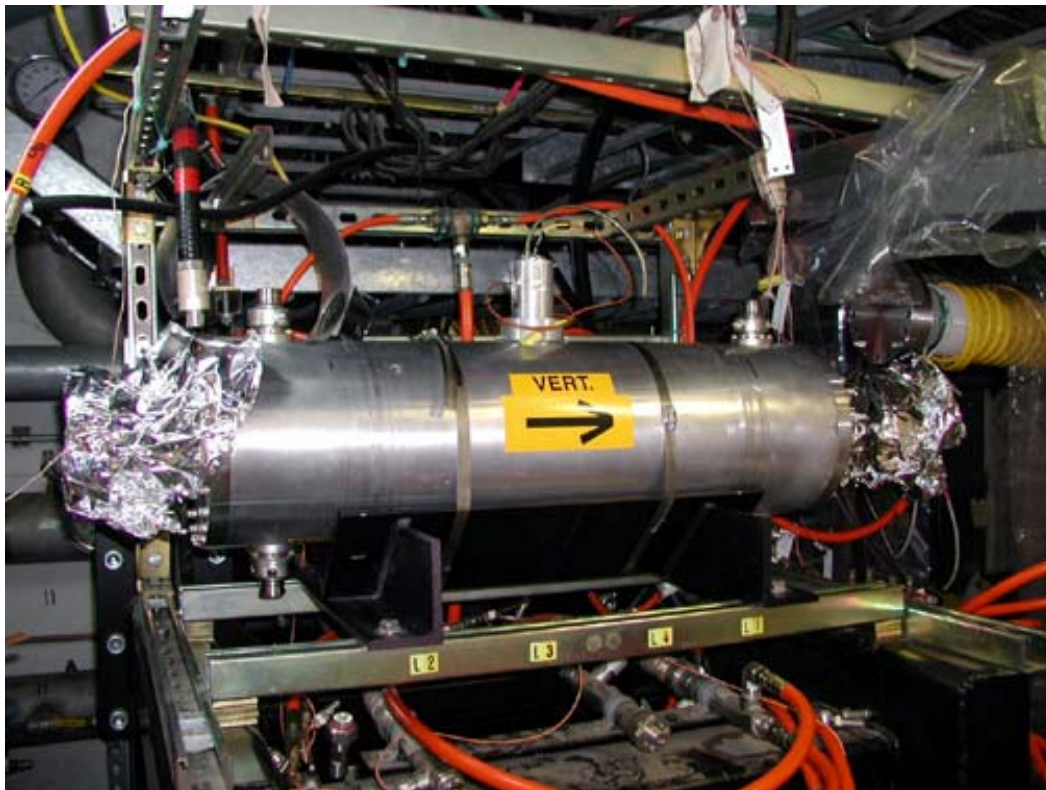
The yellow lines indicate the 3 TBs that were used for the setting.

After discussions with Mohammad Dormiani and David Kharakh, it was decided to roll the second module. Here are the new found values:

	Z (in)	X (in)	Y (in)	Z (mm)	X (mm)	Y (mm)
BL4BLK11	0.000	-0.001	-0.007	0.0	0.0	-0.2
BL4BLK12	-0.005	0.009	0.000	-0.1	0.2	0.0
BL4BLK13	0.013	0.001	-0.002	0.3	0.0	0.0
BL4BLK14	0.012	0.004	0.006	0.3	0.1	0.2
BL4BLK1A	0.020	0.058	0.003	0.5	1.5	0.1
BL4BLK1B	0.020	-0.110	0.006	0.5	-2.8	0.2
BL4BLK1C	0.019	0.006	-0.114	0.5	0.1	-2.9
BL4BLK1D	0.023	0.010	-0.111	0.6	0.3	-2.8

Again the highlighted boxes reflect the values set in the field. The second module is rolled to the first one by approximately 10 milliradians.

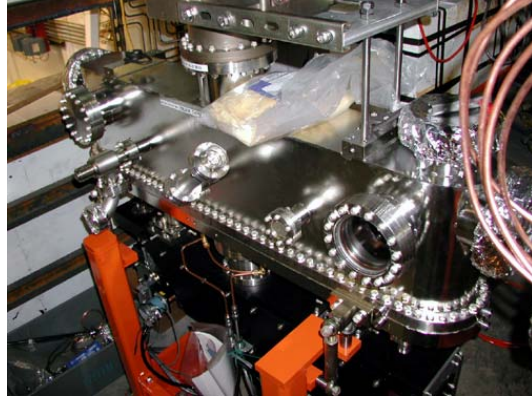
- Friday August 20
 - o Set transverse vertical kicker using flanges and features.



SPEAR3 BL6-0

- Monday August 16
 - o Set the 4-jaw slit tank, the BPM and the tapered mask
- Tuesday August 17
 - o Set the M0 mirror tank and 1 slit on the 4-jaw slit tank

- Wednesday August 18
 - o Set the remaining 3 slits
- Thursday August 17
 - o Set the M0 mirror



Linac Laser Alignment System

- Monday August 16
 - o Plug open
 - o Special AEG built indicator box used



- Tuesday August 17



- Wednesday August 18
 - o The laser was down because of power outage, so no actual visual check of image quality could be done. The last 10 sectors were physically inspected both from the klystron gallery and the accelerator housing; no target was found "in".
 - o 20-6 air shut off; 5-9 electricians???



- Friday August 20

Miscellaneous

- Monday August 16
 - o SSRL Vacuum: Fiducialization of graphite filters for SSRL BL9-2, BL4-1 and BL4-2
 - o PEP-II: gather CMM data for Frascati kicker set-up
 - o Sector 20 LCLS shielding wall: verify location of holes in shield wall "B" after setting the wall

- Tuesday August 17
 - o SSRL Vacuum: Fiducialization of graphite filters for SSRL BL4-3, BL7-2, BL7-3, BL9-3 and BL10-2

- Wednesday August 18
 - o Check paperwork for all the previous graphite filter fiducialization
 - o SSRL: start layout for stairs foundations outside building 130

- Thursday August 19
 - o Assemble paperwork for all the previous graphite filter fiducialization
 - o SPEAR3 BL0: set mirror M0 in beamline
 - o Sector 20 LCLS shielding wall: check progress
 - o PEP-II SLM: review the strongback alignment procedure for the PEP-II LER vacuum arc chamber (SA-340-410-30)
 - o FFTB E166: review the alignment schemes for the Tungsten collimators (PC7 and PC7.8)

- Friday August 20
 - o SSRL Vacuum: design support plate for future assembly
 - o SSRL: finish layout for stairs foundations outside building 130