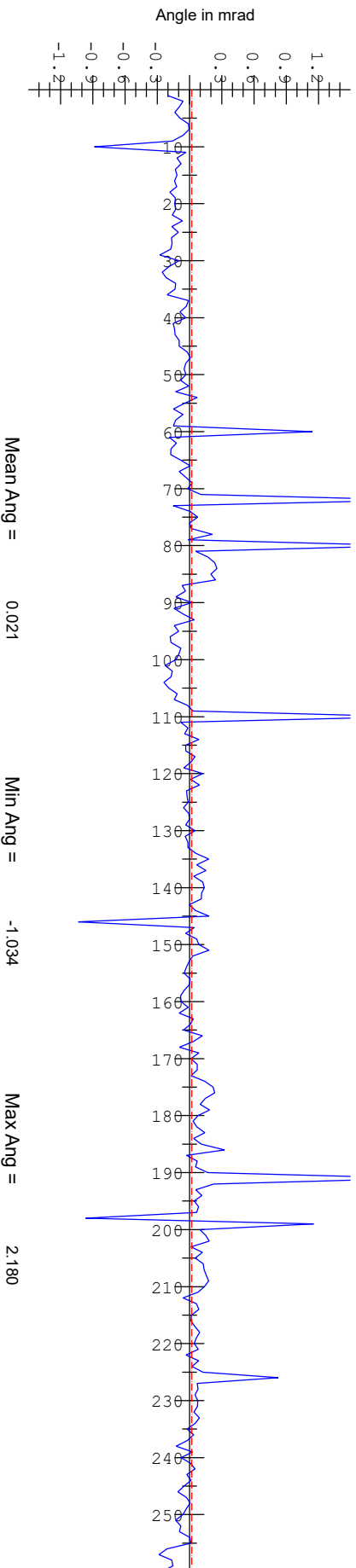



### Included Angle Between Pole Tips

Pole Tip Num. ----->

### Angle of Symmetry Line between Pole Tips to Grider ZX Plane



Dimensions in MM, Angles in Milliradians

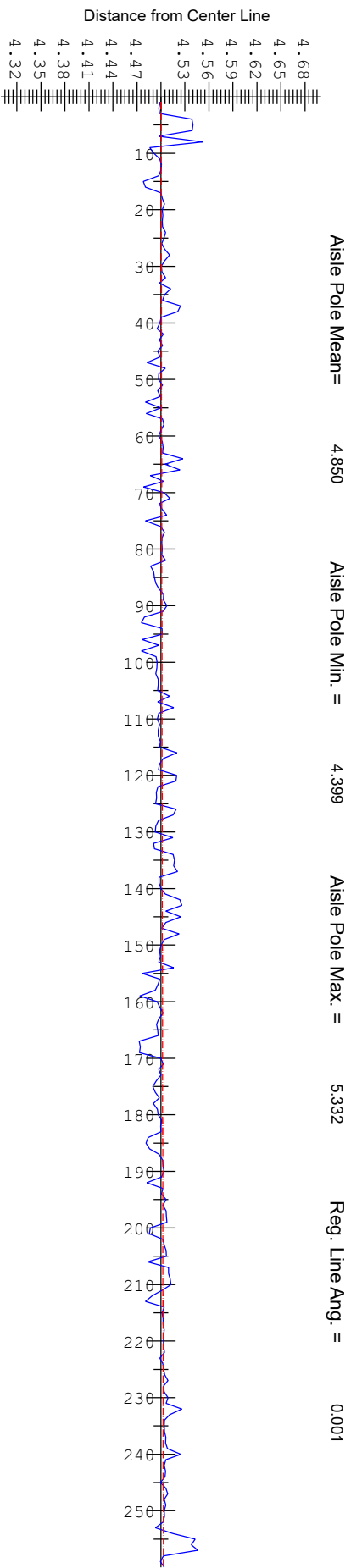


**SLAC**  
NATIONAL ACCELERATOR LABORATORY  
METROLOGY

## HGVPU - Pole Tip Angles

Nominal Gap :	9.000	US Full :	9.0000	DS Full :	8.9999
Nom. Taper :	0.000	US Wall Half :	4.4589	DS Wall Half :	4.4969
		US Aisle Half :	4.4563	DS Aisle Half :	4.4977

S/N	: HXU 016
Date	: 01-SEP-2020
Data Set	: 0001
Run	: 001
Cam Pos.	: B

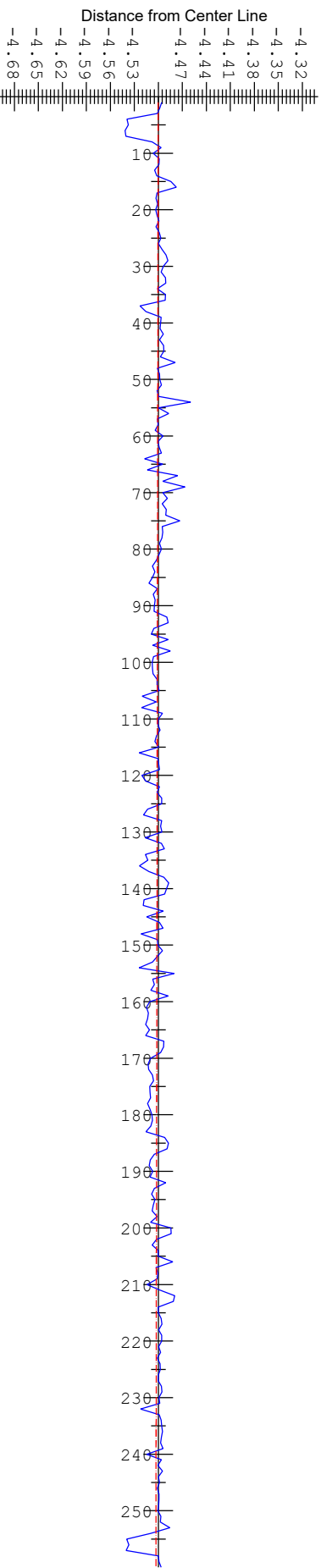


Pole Tip Num. ----->

### Aisle Pole Tips at Nom. Beam Height

Blue = Pole Tip points  
Green = Mean line  
Red = Regression line thru points

Minimum Clearance Gap = 7.400



### Girder centerline in reference to Vacuum Chamber locating pins

Dimensions in MM, Angles in Milliradians

**SLAC**  
NATIONAL ACCELERATOR LABORATORY  
METROLOGY

## HGVPU - Pole Tip Location from Girder Centerline

Nominal Gap : 9.000      US Full : 9.0000      DS Full : 8.9999

Nom. Taper : 0.000      US Wall Half : 4.4589      DS Wall Half : 4.4969

US Aisle Half : 4.4563      DS Aisle Half : 4.4977

S/N : HXU 016

Date : 01-SEP-2020

Data Set : 0001

Run : 001

Cam Pos. : B

**Values Calculated from Regression Line End Points**

Dimension	X Value	Y Value	Z Value	Calc. Value
US Aisle Pole Tip(1)	4.500	143.760	8.750	
US Wall Pole Tip(1)	-4.500	143.760	8.750	
US Sym. Pt.	0.000			
US Gap				9.000
DS Aisle Pole Tip(260)	4.503	143.760	3375.750	
DS Wall Pole Tip(260)	-4.503	143.760	3375.750	
DS Sym. Pt.	0.000			
DS Gap				9.006
Taper				0.006

Dimensions in MM

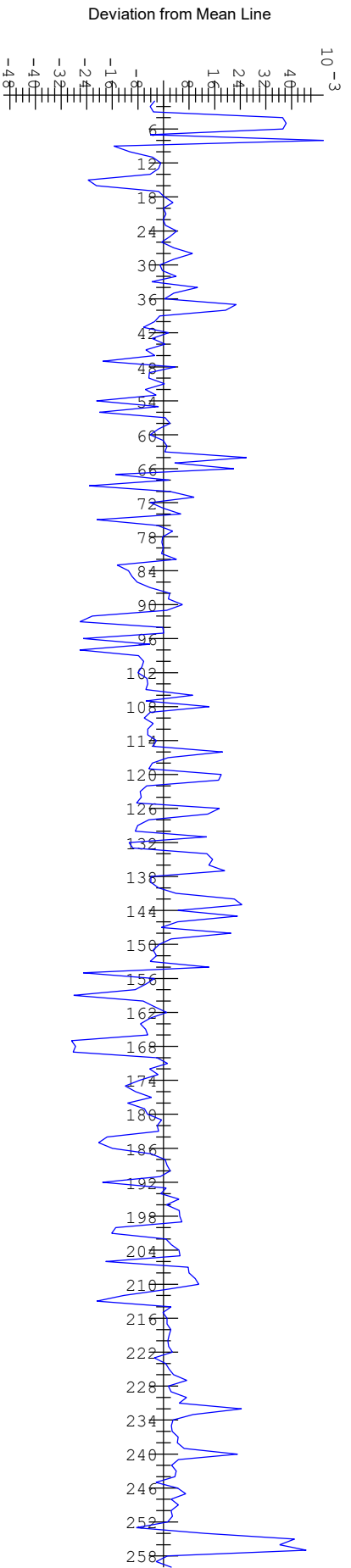


**HGVPU - Gap Calc. from Regression Line End Points**

Nominal Gap :	9.000	US Full :	9.0000	DS Full :	8.9999
Nom. Taper :	0.000	US Wall Half :	4.4589	DS Wall Half :	4.4969
		US Aisle Half :	4.4563	DS Aisle Half :	4.4977

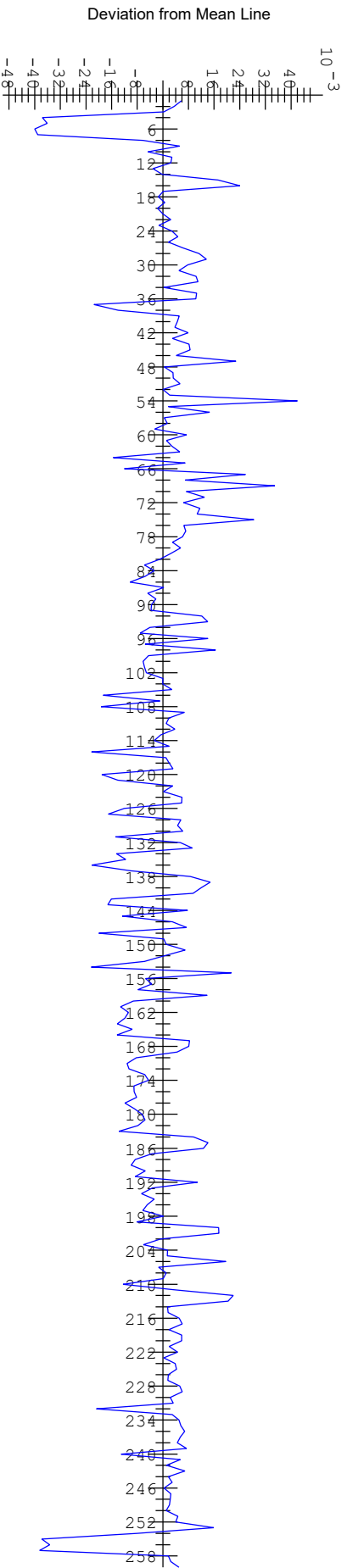
S/N	: HXU_016
Date	: 01-SEP-2020
Data Set	: 0001
Run	: 001
Cam Pos.	: B






### Aisle Pole Tips

### Wall Pole Tips



## Pole Tip Deviations from Jaw Mean Lines when aligned to actual Gap Sym. Plane

Dimensions in MM



**SLAC**  
NATIONAL ACCELERATOR LABORATORY  
METROLOGY

# HGVPU - Pole Tip Deviation from Mean Line

Nominal Gap :	9.000	US Full :	9.0000	DS Full :	8.9999
Nom. Taper :	0.000	US Wall Half :	4.4589	DS Wall Half :	4.4969
		US Aisle Half :	4.4563	DS Aisle Half :	4.4977

S/N	: HXU_016
Date	: 01-SEP-2020
Data Set	: 0001
Run	: 001
Cam Pos.	: B