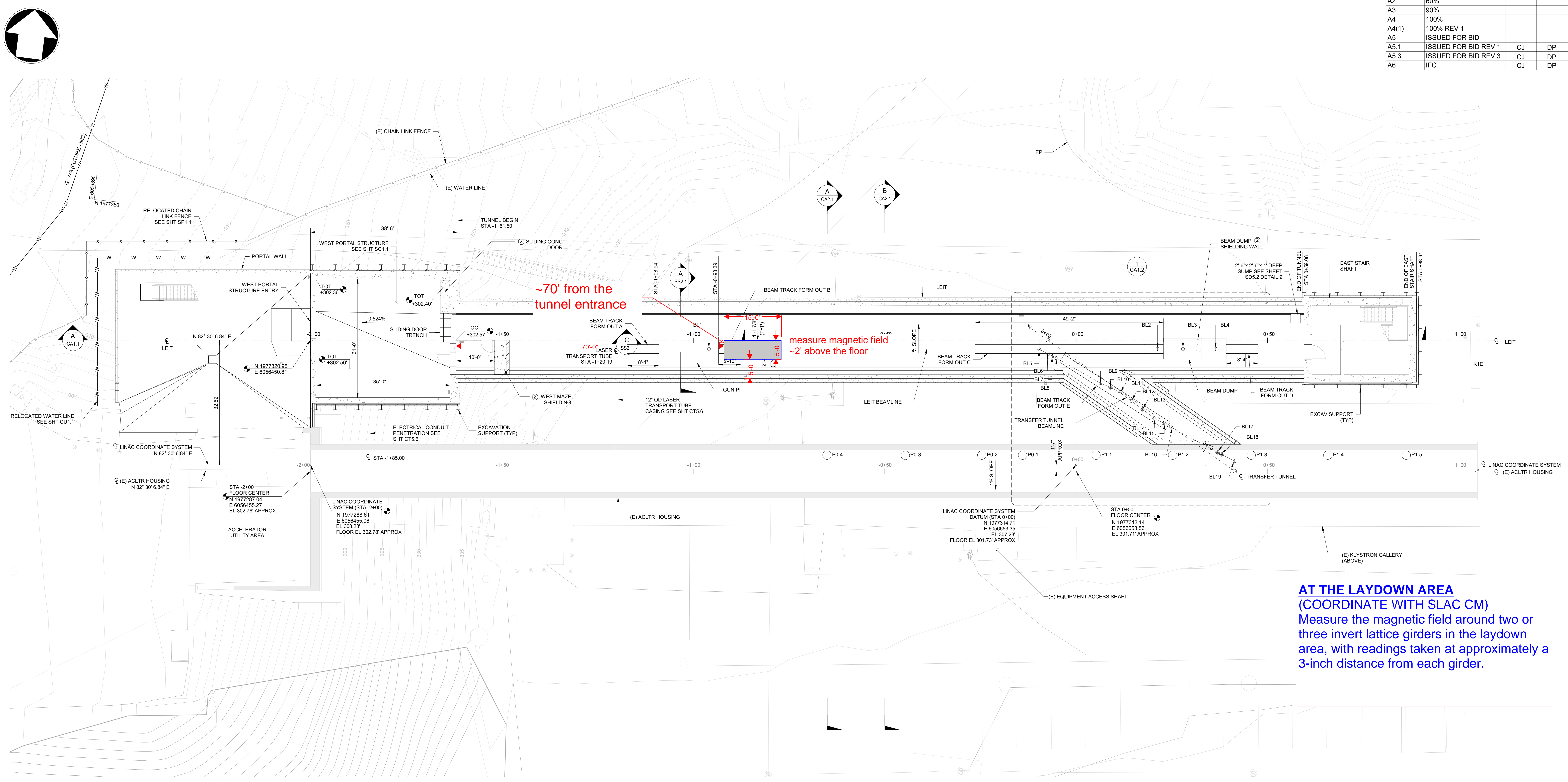


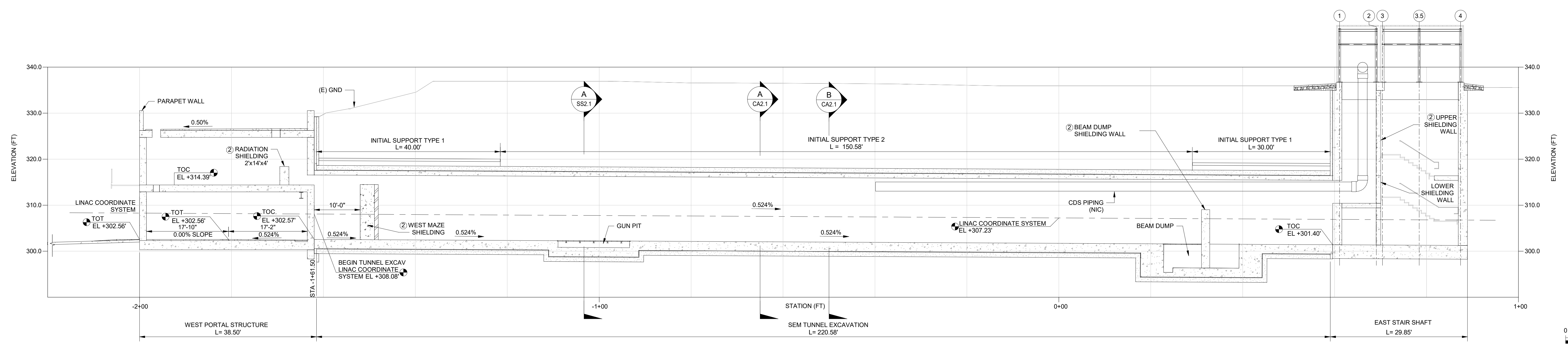
REV	DESCRIPTION	DRN	CHK	DATE
A2	60%			09/09/22
A3	90%			04/07/23
A4	100%			06/09/23
A4(1)	100% REV 1			08/21/23
A5	ISSUED FOR BID			09/30/23
A5.1	ISSUED FOR BID REV 1	CJ	DP	10/02/23
A5.3	ISSUED FOR BID REV 3	CJ	DP	01/05/24
A6	IFC	CJ	DP	06/14/24



BASEMENT LEVEL FLOOR PLAN
SCALE: 1" = 10'-0"

AT THE LAYDOWN AREA
(COORDINATE WITH SLAC CM)
Measure the magnetic field around two or three invert lattice girders in the laydown area, with readings taken at approximately a 3-inch distance from each girder.

- NOTES:**
- SEE SHEET CT2.2 FOR INITIAL SUPPORT TYPE 1 REQUIREMENTS.
 - SEE SHEET CT2.3 FOR INITIAL SUPPORT TYPE 2 REQUIREMENTS.
 - BEAMLINE TABLE NOTES:
 - A. LATERAL IS MEASURED FROM THE LINAC COORDINATE SYSTEM AT 270° FROM THE AZIMUTH.
 - B. LONGITUDINAL IS MEASURED FROM THE LINAC COORDINATE DATUM AT 0° RELATIVE TO THE LINAC COORDINATE SYSTEM AZIMUTH.
 - C. VERTICAL IS MEASURED VERTICALLY FROM THE LINAC COORDINATE SYSTEM.



SECTION A-A
SCALE: 1" = 10'-0"

ID	ELEMENT	X (m) [FT] LATERAL	Z (m) [FT] LONGITUDINAL	Y (m) [FT] VERTICAL	LEIT STA (FT)	TRANSFER TUNNEL STA (FT)	ELEV. (FT)
BL1	CATHODELEI	9.2500 [30.3478]	-29.2341 [-95.9124]	-0.9900 [-3.2480]	0+95.91	N/A	304.48
BL2	BYDGIS	9.2500 [30.3478]	6.4838 [21.2723]	-1.0312 [-3.3831]	0+21.27	N/A	303.74
BL3	BYDGIS	9.2500 [30.3478]	8.5092 [27.9172]	-2.3488 [-7.7061]	0+27.92	N/A	299.38
BL4	DUMPFACEI	9.2500 [30.3478]	11.1092 [36.4474]	-2.3900 [-7.8412]	0+36.45	N/A	299.20
BL5	BXDRLI	9.2160 [30.2362]	-2.9360 [-9.6325]	N/A	0+9.63	N/A	304.03
BL6	SDLI1	8.8260 [28.9567]	-2.1430 [-6.9308]	N/A	0+9.73	N/A	N/A
BL7	QDLI1	8.6790 [28.4744]	1.8720 [6.1417]	N/A	0+6.14	N/A	N/A
BL8	CDLI1	8.5210 [27.9560]	-1.5790 [-5.1804]	N/A	0+5.18	0+47.54	N/A
BL9	QDLI2	8.5220 [27.9876]	2.1180 [6.9488]	N/A	0+6.95	0+49.47	N/A
BL10	QDLI3	8.1880 [20.3018]	2.7350 [8.9731]	-0.9900 [-3.2480]	0+8.97	0+50.26	N/A

ID	ELEMENT	X (m) [FT] LATERAL	Z (m) [FT] LONGITUDINAL	Y (m) [FT] VERTICAL	LEIT STA (FT)	TRANSFER TUNNEL STA (FT)	ELEV. (FT)
BL11	BXDRLIR1A	5.7660 [18.9173]	3.5970 [11.8009]	-0.9900 [-3.2480]	0+18.92	N/A	304.48
BL12	STDLI1	5.1040 [16.7454]	4.3930 [14.4127]	-1.0312 [-3.3831]	0+16.75	N/A	303.74
BL13	STDLI2	4.4400 [14.5669]	5.2770 [17.3130]	-2.3488 [-7.7061]	0+14.57	N/A	299.38
BL14	BXDRLR2A	3.7640 [12.3491]	6.1830 [20.2854]	-2.3900 [-7.8412]	0+12.35	N/A	299.20
BL15	QDLI4	3.3420 [10.9646]	6.6540 [21.8150]	N/A	0+10.96	N/A	304.03
BL16	SDLI1	3.0080 [9.8688]	7.5720 [24.8425]	N/A	0+9.87	N/A	N/A
BL17	TDLI3	1.0130 [3.3235]	11.2610 [36.9455]	N/A	0+3.32	N/A	N/A
BL18	QDLI6	0.8500 [2.7887]	11.5620 [37.9331]	N/A	0+2.79	N/A	N/A
BL19	BXDRLI2A	0.3140 [1.0302]	12.6250 [41.4205]	N/A	0+1.03	N/A	N/A

All changes from the BIO approved job set of plans and specifications shall be submitted to and approved by the BIO office prior to the changes being made in the field.

Professional Engineer Stamp: MOTT MACDONALD, CIVIL ENGINEER, STATE OF CALIFORNIA. License No. 67299, Exp. 09/30/24.

SLAC ENERGY logo and project information. Drawing Number: B0001-CS1-0056, Revision: A6. Project: B0001-LEIT LCLS-II-HE LEIT LOW EMITTANCE INJECTOR TUNNEL HEAVY CIVIL LEIT PLAN AND SECTION.

B0001-CS1-0056 A6