

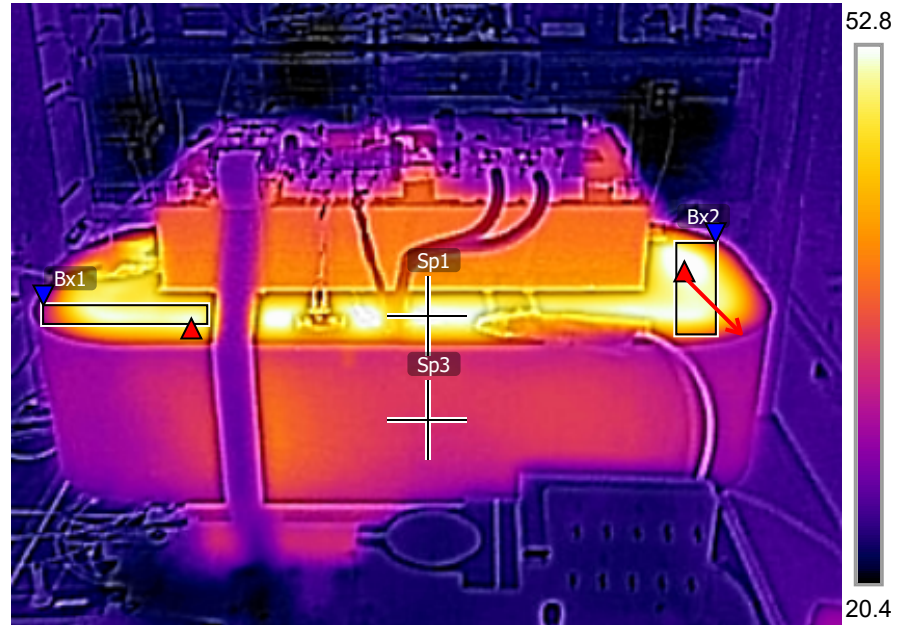
Measurements

Bx1	Max	52.0 °C
	Min	25.0 °C
	Average	46.4 °C
Bx2	Max	54.8 °C
	Min	26.7 °C
	Average	48.3 °C
Sp1		53.6 °C
Sp3		28.3 °C

Parameters

Emissivity	0.95
Refl. temp.	20 °C

4/19/2010 1:28:42 PM

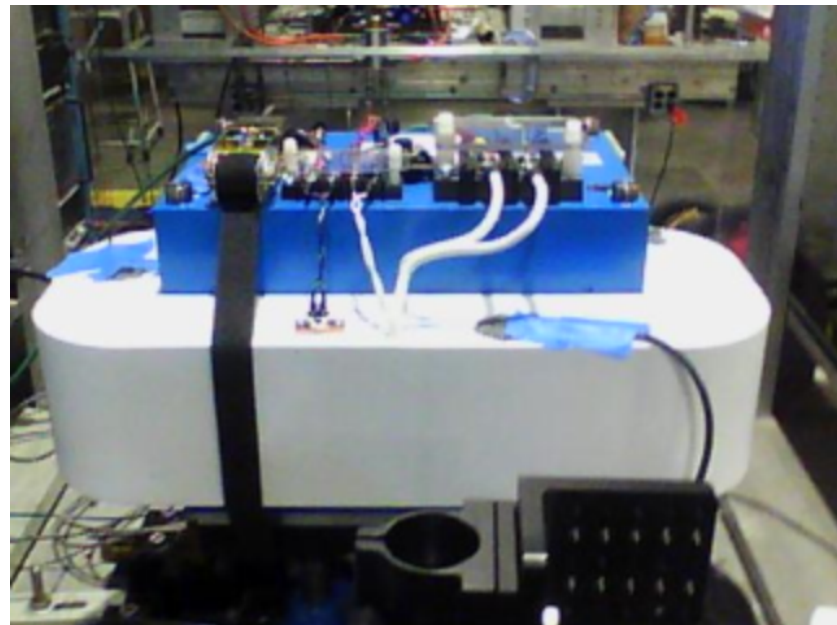


FACET-II Dipole 4595 at...

FLIR C3

720149250

4/19/2010 1:28:42 PM



FACET-II Dipole 4595 at...

FLIR C3

720149250