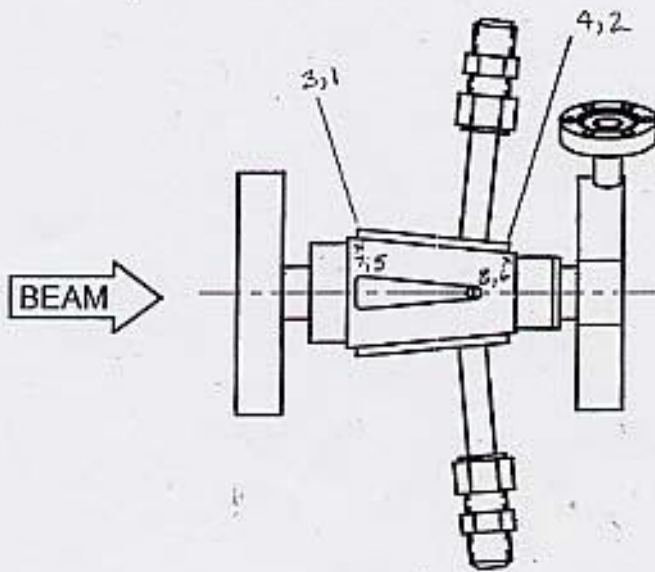


SSRL BE WINDOW

BEAM LINE _____ SN 001
 SPARE



BODY

| | X |
|---|--------|
| 5 | +1.359 |
| 6 | +1.359 |
| 7 | -1.367 |
| 8 | -1.367 |

| | Y |
|---|--------|
| 1 | +1.892 |
| 2 | +1.720 |
| 3 | +1.882 |
| 4 | +1.706 |

FLANGES

| | (+) X | (-) X | Y |
|-----|--------|--------|--------|
| 4/S | +1.690 | -1.680 | +1.684 |
| D/S | +1.634 | -1.616 | +1.624 |

check
Jm

SSRL
Be WINDOW SPOOL
SPARE

5-26-05
J.M., L.G.

(X)

6) 1.363 1/2 BODY

5) 1.363
2.000
1.993
1.000
1.030
1.811 1/2
1.811 1/2
+ 3.174 LOS

8.843 REF.
3.174 LOS

5.669 = ϕ

5.669
- 0.004

5.673 = ϕ
8.843

+ 3.170 LOS

APERTURE

(+) 5.669
.689

6.358 5/16

+ .004

(-) 5.669
.689

4.980 5/16

+ .004

- .004 LOS

FLANGES

FLANGES

(+) SIDE

(-) SIDE

w/s) 1.480
3.170

+ 1.690

o/s) 1.536
3.170

+ 1.634

w/s) 3.370 DIA
1.690

- 1.680

o/s) 3.250 DIA
1.634

- 1.614

BODY

5) 3.170
1.811

+ 1.359

6) 3.170
1.811

+ 1.359

7) 2.726
1.359

- 1.347

8) 2.726
1.359

- 1.367

SSRL SPARE
Be WINDOW
SNOOI

check
sm

5-26-05
J.M., L.G.

(Y)

+1078
-1079

NO ROLL ON APERT.

9.205 = Q
13.535

+4.330 HI

FLANGES

u/s)

o/s)

~~2.682~~

~~2.726~~

2.646

2.706

4.330

4.330

+1.684

+1.624

1) 4.330
3.438

+0.892

2) 4.330
3.610

+0.720

3) 4.330
3.448

+0.882

4) 4.330
3.624

+0.706