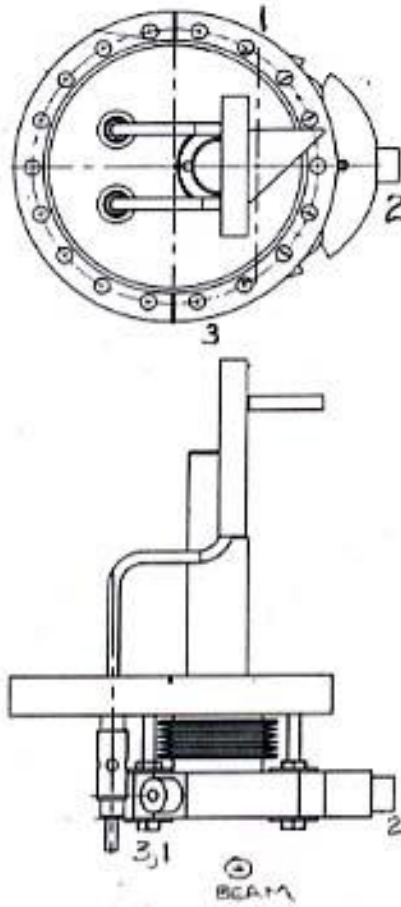


(BLØ)

SSRL SPEAR 3
SLM-MO COLD FINGER

5-3-04
J.M.C., L.G.



	X	Y	Z
1	+ 4.184	- 8.590	+ 2.720
2	- 2.588	- 8.554	+ .005
3	+ 4.099	- 8.592	- 2.903

SSRL SPBAR3
SLM-MO
COLD FINGER

5/3/04
J.M., L.G.

check
5-3-04
J.M.

Y

$$\begin{array}{r} 7.122 \\ .160 \\ \hline 7.282 \text{ HI} \end{array}$$

$$\begin{array}{r} 1) \ 7.877 \\ 8.000 \\ \hline 15.877 \\ 7.282 \\ \hline \end{array}$$

$$\boxed{-8.590}$$

$$\begin{array}{r} 2) \ 7.836 \\ 8.000 \\ \hline 15.836 \\ 7.282 \\ \hline \end{array}$$

$$\boxed{-8.554}$$

$$\begin{array}{r} 3) \ 7.874 \\ 8.000 \\ \hline 15.874 \\ 7.282 \\ \hline \end{array}$$

$$\boxed{-8.592}$$

- SIDE OF FINGER BRAZEMENT

4/5) \emptyset

0/5) \emptyset

$$\begin{array}{r} 24.400 \\ 24.419 \\ \hline 29.000 \\ \hline 25.863 \text{ 797} \\ 24.805 \text{ 795} \\ \hline 24.782 \\ 24.439 \\ \hline 24.443 \\ 24.537 \text{ 512} \\ 24.537 \text{ 512 539} \end{array}$$

- SIDE OF FLANGE

22.744 (6.760 DIA)

- EDGE FINGER
- 22.970 WS

$$\begin{array}{r} 1) \ 9.535 \\ 17.619 \\ \hline 27.154 \\ 22.970 \\ \hline \end{array}$$

$$\boxed{+4.184}$$

$$\begin{array}{r} 2) \ 19.382 \\ 1.000 \\ \hline 20.382 \\ 22.970 \\ \hline \end{array}$$

$$\boxed{-2.588}$$

$$\begin{array}{r} 3) \ 9.450 \\ 17.619 \\ \hline 27.069 \\ 22.970 \\ \hline \end{array}$$

$$\boxed{+4.099}$$

7

SSRL SPEAR 3
SLM-MO
COLD FINGER

check
5-3-4
5m

5/3/04

J. Mc., L.G.

FLANGE

BRAZEMENT (3.060)

- .745 to D/S FACE
OFF INDEXED FROM
D/S EDGE OF
BRAZEMENT

36.131
3.380

39.511

38.012
1.530

- 39.542 LOS



1) 24.651
17.619

42.270

- 39.542

+ 2.728

2) 38.547
1.000

39.547

- 39.542

+ .005

3) 35.639
1.000

36.639

- 39.542

- 2.903

9551020