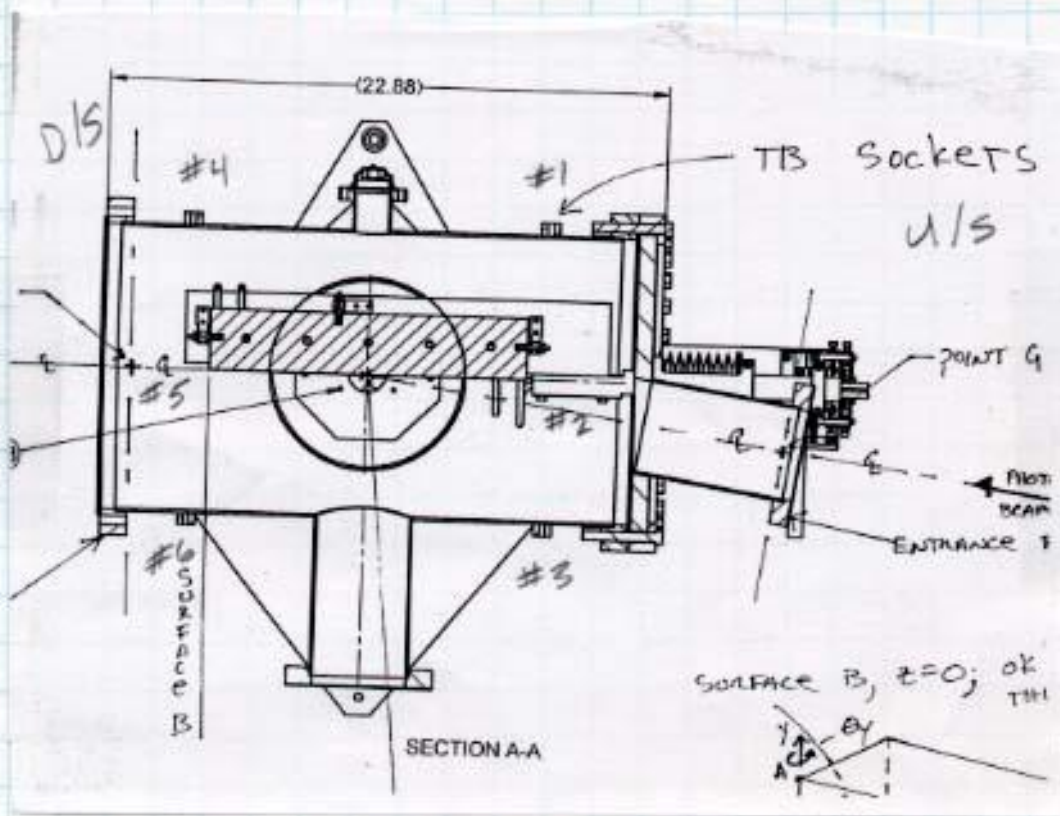


SSRL
SLM m ϕ



TB	X	Y	Z
1	-7.384	1.507	-7.571
2	2.275	7.037	-7.887
3	7.422	-0.208	-7.639
4	-7.155	1.619	7.734
5	1.949	7.205	8.031
6	7.613	-0.623	7.656

ENTRANCE SM. FLANGE	2.824	-0.090		
LG. U/S FL	-0.091	-0.092		
LG D/S FL	-0.091	-0.067	10.753	Front Face

SSRL
SLM-MO

7-26-04
JMc, FG

X) Buck-in on Back of Mirror
F:N Value 2.520 (width of Mirror)

F 1.600
N 1.669
F 1.300
N 1.408

Reference Blades @ 30.000"
Φ @ 30 + 4.651 = 34.651

2.131 S/R
LOS 4.651

MOVED OVER TO CHECK MIRROR +.008
Φ @ 34.651
34.651
34.659

REF @ 18"
LOS = 34.659
-16.659

U/SFL 9.568
7
16.568
16.659
-.091

D/SR 9.843
7
16.568
16.659
-.091

1	2	3	4	5	6
8.275	17.938	16.919	8.504	17.612	
1. -	1. -	1. -	1. -	1. -	
9.275	18.938	17.919	9.504	18.612	
16.659	16.659	25.341	16.659	16.659	
-7.384	+2.279	+7.422	-7.155	+1.953	

Small
ENTER FL
16.535
2.990
19.525
16.659
2.866

Setup 2
Ref @ 60"
34.659
LOS = +25.341
check 2
22.070
1. -
23.070
25.341
2.271

6 5
16.728 22.996
1. - 1. -
17.728 23.996
25.341 25.341
7.613 1.945
2.781

SSRL
SLM mφ

7-26-04
LOW GUN
D/S & U/S
TOP MIRROR
+ .019

Y) High Gun
19.985
7.403
HI = 12.582

check 7-26-04 SM
BEVELED EDG.
+ .002
REF. 9.336

D/S
BEVELED EDGE BOT OF MIRROR
+ Ø.003
-.020

U/S SMALL FL

REF. 5.470

⊕ @ 7.403

1

10.075
1. —
11.075
12.582
1.507

2

4.545
1. —
5.545
12.582
7.037

3

11.790
1. —
12.790
12.582
-0.208

4

9.963
1. —
10.963
12.582
1.619

5

4.377
1. —
5.377
12.582
7.205

6

12.205
1. —
13.205
12.582
-0.623

U/S Small FL

9.682
2.990
12.672
12.582
-0.090

U/S FL

5.674
7
12.674
12.582
-1.092

D/S FL

5.649
7
12.649
12.582
-0.067

VAC FL

10.069
2.99
13.059
12.582
-4.77

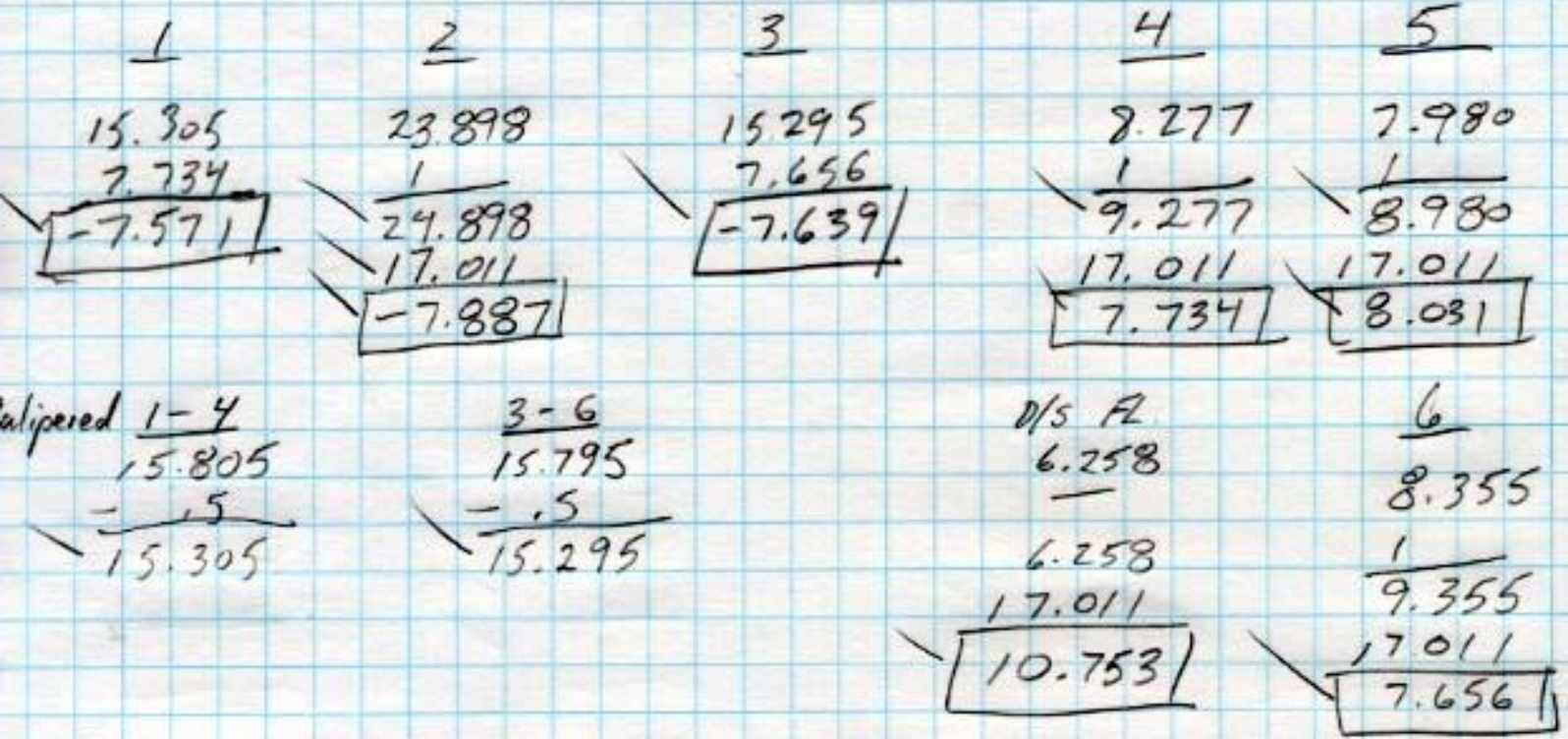
Z)

D/S END MIRROR

Checked Mirror Length $12.992 \div 2 = 6.496$
7-26-04

$$\begin{array}{r} 10.515 \\ 16.496 \\ \hline \end{array}$$

LOS = +17.011



D/S End Rotated Toward SSRL (+)

TOP .001 Roll
BOT

D/S End Rotate Toward Spear (-)

Roll Good Ø change