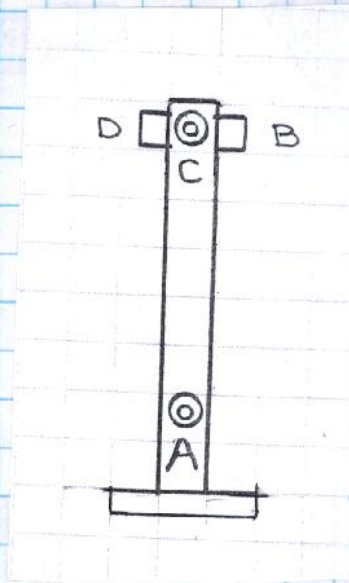


LAB DATA 14-3
TOP VERT. SLIT

8-08



(ROTATED 8 MR)
LAB DATA (FIELD)

	X	Y	Z
A	1.426	13.204	431.604
B	3.354	19.736	433.625
C	1.314	19.686	431.596
D	3.332	19.712	429.574

(NOT ROTATED)
LAB DATA

	X	Y	Z
A	-2.026	13.204	-0.077
B	-0.115	19.736	1.959
C	-2.138	19.686	-0.086
D	-0.104	19.712	-2.092

BL14-3 MØ TOPVERT. SLIT 808

ROTATED 8MR

Job Description:

Report Units: inches, milliradians

Job File: C:\Documents and Settings\levirt\My Documents\My Documents\SSRL 2008\BL143

Job Date: Friday, August 01, 2008 10:47:14 AM

Report Frame: PART

BL143TVSM	3.453	0.000	431.665
BL143TVSA	1.426 ✓	13.204 ✓	431.604 ✓
BL143TVSB	3.354 ✓	19.736 ✓	433.625 ✓
BL143TVSC	1.314 ✓	19.686 ✓	431.596 ✓
BL143TVSD	3.332 ✓	19.712 ✓	429.574 ✓

X

Y

Z

Report Date: Friday, August 01, 2008 11:01:54 AM

FARO Insight 5.0.5

Page 1

Job Description:

Report Units: inches, milliradians

Job File: C:\Documents and Settings\levirt\My Documents\My Documents\SSRL 2008\BL143

Job Date: Friday, August 01, 2008 10:47:14 AM

Report Frame: @STATION01

BL143TVSM	0.000	0.000	0.000
BL143TVSA	-2.026 ✓	13.204 ✓	-0.077 ✓
BL143TVSB	-0.115 ✓	19.736 ✓	1.959 ✓
BL143TVSC	-2.138 ✓	19.686 ✓	-0.086 ✓
BL143TVSD	-0.104 ✓	19.712 ✓	-2.092 ✓

X Y Z

LAB DATA

Report Date: Friday, August 01, 2008 10:51:26 AM

SSRL

BL 14-3 MØ VERTICAL SLIT
TOP

7-28-08
J.M., L.G.

SHORT
ARM

$$\begin{array}{r} \textcircled{X} 10.875 \\ .940 \text{ } \frac{1}{2} \text{ BODY} \\ \hline - 11.815 \text{ LOS} \end{array}$$

$$\begin{array}{r} \text{A) } 8.789 \\ 1. \text{ } \hline \hline 9.789 \\ \hline 11.815 \\ \hline \boxed{-2.026} \end{array}$$

$$\begin{array}{r} \text{B) } 10.700 \\ 1. \text{ } \hline \hline 11.700 \\ \hline 11.815 \\ \hline \boxed{-.115} \end{array}$$

$$\begin{array}{r} \text{C) } 8.677 \\ 1. \text{ } \hline \hline 9.677 \\ \hline 11.815 \\ \hline \boxed{-2.138} \end{array}$$

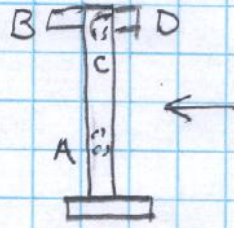
$$\begin{array}{r} \text{D) } 10.711 \\ 1. \text{ } \hline \hline 11.711 \\ \hline 11.815 \\ \hline \boxed{-.1041} \end{array}$$

SSRL
BL14-3 MØ VERTICAL SLIT
TOP

7-28-08
J.M., L.G.

SHORT ARM

Ⓨ (+) .011 to BOTTOM EDGE
8.850 REF.
8.861 = Ø
31.727
22.866 HI



1.880
.503

A) 8.662

B) 2.130

C) 2.180

D) 2.154

1. —
9.662
22.866

1. —
3.130
22.866

1. —
3.180
22.866

1. —
3.154
22.866

+13.204

+19.736

+19.686

+19.712

Ⓩ
+.250
+.250
24.000
24.015
29.000
28.902
24.664 s/r
24.664 s/r ✓
+24.914 LOS

A) 23.991

B) 21.955

1. —
24.991
24.914
-0.077

1. —
22.955
24.914
+1.959

C) 24.000

D) 4.551

(B-D)

1. —
25.000
24.914
-0.086

.500
4.051
1.959
-2.092