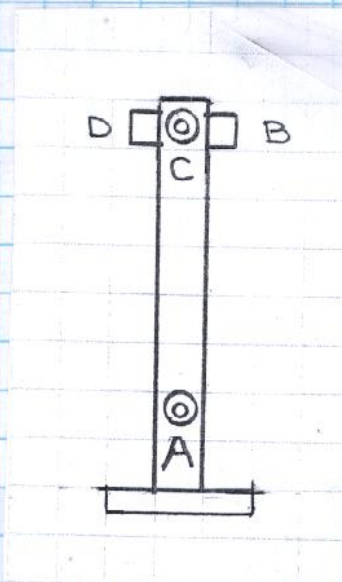


LAB DATA 14-1
TOP VERT. SLIT

8-08



(ROTATED 8 MR)
LAB DATA (FIELD)

	X	Y	Z
A	-1.259	13.157	430.221
B	-3.065	19.708	428.143
C	-1.052	19.638	430.203
D	-3.099	19.705	432.194

(NOT ROTATED)
LAB DATA

	X	Y	Z
A	2.182	13.157	0.039
B	0.360	19.708	-2.025
C	2.389	19.638	0.019
D	0.358	19.705	2.026

14-1 TOP VERT SLIT
ROTATED 8MR

8-08

Job Description:

Report Units: inches, milliradians

Job File: C:\Documents and Settings\levirt\My Documents\My Documents\SSRL 2008\14-1 M

Job Date: Wednesday, February 20, 2008 02:27:14 PM

Report Frame: PART

141M	-3.441	0.000	430.165
141VSTA	-1.259 ✓	13.157 ✓	430.221 ✓
141VSTB	-3.065 ✓	19.708 ✓	428.143 ✓
141VSTC	-1.052 ✓	19.638 ✓	430.203 ✓
141VSTD	-3.099 ✓	19.705 ✓	432.194 ✓

X Y Z

Job Description:

Report Units: inches, milliradians

Job File: C:\Documents and Settings\levirt\My Documents\My Documents\SSRL 2008\14-1 1

Job Date: Wednesday, February 20, 2008 02:27:14 PM

Report Frame: @STATION01

141M	0.000	0.000	0.000
141VSTA	2.182 ✓	13.157 ✓	0.039 ✓
141VSTB	0.360 ✓	19.708 ✓	-2.025 ✓
141VSTC	2.389 ✓	19.638 ✓	0.019 ✓
141VSTD	0.358 ✓	19.705 ✓	2.026 ✓

X

Y

Z

SSRL

7-25-08

BL 14-1 MP Vertical SCIT TOP

J.M., L.G.

$$\begin{array}{r}
 \textcircled{X} 8.904 \\
 + 94 \frac{1}{2} \text{ BODY} \\
 \hline
 + 9.845 \text{ LOS}
 \end{array}$$

SHORT ARM

$$\begin{array}{r}
 \text{A) } 6.463 \\
 + 1. \\
 \hline
 7.463 \\
 + 9.845 \\
 \hline
 \boxed{+2.182}
 \end{array}$$

$$\begin{array}{r}
 \text{B) } 8.485 \\
 + 1. \\
 \hline
 9.485 \\
 + 9.845 \\
 \hline
 \boxed{+1.360}
 \end{array}$$

$$\begin{array}{r}
 \text{C) } 6.456 \\
 + 1. \\
 \hline
 7.456 \\
 + 9.845 \\
 \hline
 \boxed{+2.389}
 \end{array}$$

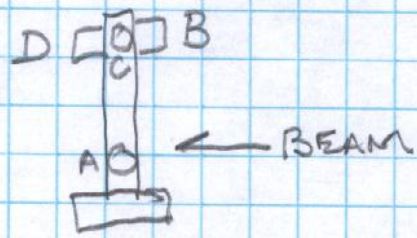
$$\begin{array}{r}
 \text{D) } 8.487 \\
 + 1. \\
 \hline
 9.487 \\
 + 9.845 \\
 \hline
 \boxed{+1.358}
 \end{array}$$

SSRL
BL14-1 MØ VERTICAL SLIT
TOP

7-25-08
J.M., L.G.
SHORT ARM

①

$$\begin{array}{r} 8.864 \text{ REF.} \\ + 0.078 \text{ BOT. EDGE} \\ \hline 8.942 = \phi \\ 31.732 \\ \hline 22.790 \text{ HI} \end{array}$$



1.882

A) 8.633

$$\begin{array}{r} 1. \\ \hline 9.633 \\ 22.790 \\ \hline \boxed{13.157} \end{array}$$

B) 2.082

$$\begin{array}{r} 1. \\ \hline 3.082 \\ 22.790 \\ \hline \boxed{19.708} \end{array}$$

C) 2.152

$$\begin{array}{r} 1. \\ \hline 3.152 \\ 22.790 \\ \hline \boxed{19.638} \end{array}$$

D) 2.085

$$\begin{array}{r} 1. \\ \hline 3.085 \\ 22.790 \\ \hline \boxed{19.705} \end{array}$$

②

.250 1/2 Bobby w/ FACE
1250

$$\begin{array}{r} 26.000 \\ 25.937 \\ 24.000 \\ 23.979 \\ 23.000 \text{ s/r} \\ 23.000 \text{ s/r} \\ - 23.250 \text{ WS} \end{array}$$

A) 22.289

$$\begin{array}{r} 1. \\ \hline 23.289 \\ 23.250 \\ \hline \boxed{+0.039} \end{array}$$

B) 20.225

$$\begin{array}{r} 1. \\ \hline 21.225 \\ 23.250 \\ \hline \boxed{-2.025} \end{array}$$

C) 22.269

$$\begin{array}{r} 1. \\ \hline 23.269 \\ 23.250 \\ \hline \boxed{+0.019} \end{array}$$

D) 4.551 (B-D)

$$\begin{array}{r} 1.500 \\ \hline 4.051 \\ 2.025 \\ \hline \boxed{+2.026} \end{array}$$