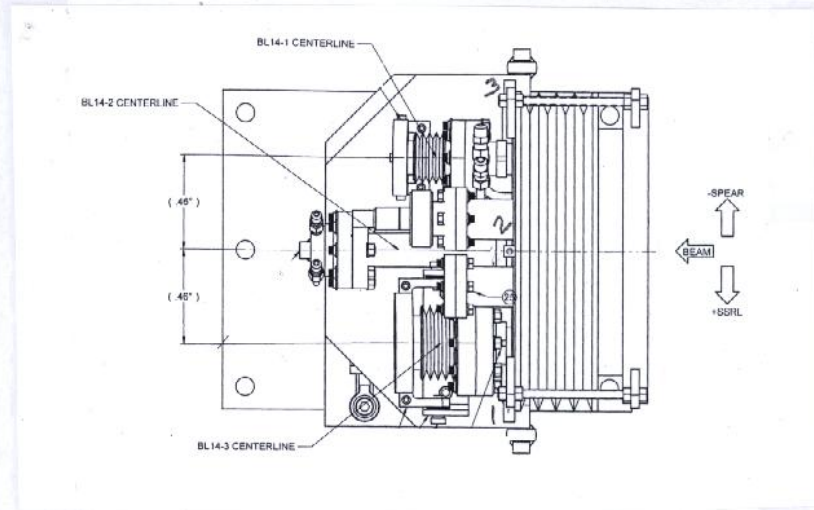


SSRL BL14 BREAK OUT

6-08



	X	Y	Z
1	+8.493	-.196	505.078
2	+.122	+8.479	505.124
3	-8.474	+.173	505.109

SSRL
BL14 BREAKOUT

5-28-08
J.M., L.G.

(X)

$$\begin{array}{r} 14-2 \leftarrow \text{SIDE} \\ (+).003 \\ .504 \text{ } \frac{1}{2} \text{ GAP} \\ \hline -.507 \text{ LOS} \end{array}$$

$$\begin{array}{r} 31.013 \text{ REF} \\ .507 \\ \hline 30.506 = \text{C} \end{array}$$

$$\begin{array}{r} 30.506 \\ 10.656 \\ \hline +19.850 \text{ LOS} \end{array}$$

$$\begin{array}{r} 1) 10.357 \\ 1. \text{ ---} \\ \hline 11.357 \\ 19.850 \\ \hline \boxed{+8.493} \end{array}$$

$$\begin{array}{r} 2) 18.732 \\ 1. \text{ ---} \\ \hline 19.732 \\ 19.850 \\ \hline \boxed{+.118} \end{array}$$

$$\begin{array}{r} 43.040 \\ 30.506 \\ \hline -12.534 \text{ LOS} \end{array}$$

$$\text{M\#3) } \boxed{+.122}$$

$$\begin{array}{r} 2) 11.660 \\ 1. \text{ ---} \\ \hline 12.660 \\ 12.534 \\ \hline \boxed{+.126} \end{array}$$

$$\begin{array}{r} 3) 3.060 \\ 1. \text{ ---} \\ \hline 4.060 \\ 12.534 \\ \hline \boxed{-8.474} \end{array}$$

SSRL
BL14 BREAKOUT

5-28-08
J.M., L.G.

(X)

-12.53460S

CHECKING FLANGES

14-1

12.534

1.685R

10.849

-4.045

6.804

6.820

+0.016

14-2

12.534

1.690R

10.844 5/2

10.847

+0.003

14-3

12.534

2.310R

10.224

4.040

14.264

14.270

+0.006

SSRL
BL14 BREAK OUT

5-28-08
J.M., L.G.

(Z)

4/3 FACE GLID COP

$$\begin{array}{r} (+) 24.503 \quad (\text{Top}) 24.503 \\ (-) 24.503 \quad (\text{Bot}) 24.503 \\ \hline -24.503 \text{ LOS} \end{array}$$

$$\begin{array}{r} (+) 24.503 \\ 504.331 \\ \hline 479.828 \text{ LOS} \end{array}$$

1) 24.250

2) 24.296

3) 24.281

$$\begin{array}{r} 1. \text{ ---} \\ \hline 25.250 \\ 479.828 \end{array}$$

$$\begin{array}{r} 1. \text{ ---} \\ \hline 25.296 \\ 479.828 \end{array}$$

$$\begin{array}{r} 1. \text{ ---} \\ \hline 25.281 \\ 479.828 \end{array}$$

$$\boxed{505.078}$$

$$\boxed{505.124}$$

$$\boxed{505.109}$$

(Y) +8.762 HI

1) 7.958

2) .033 to 1/8

3) 7.589

$$\begin{array}{r} 1.000 \\ \hline 8.958 \\ 8.762 \end{array}$$

$$\begin{array}{r} .250 \\ \hline (-) 7.283 \\ 8.762 \end{array}$$

$$\begin{array}{r} 1.000 \\ \hline 8.589 \\ 8.762 \end{array}$$

$$\boxed{-0.196}$$

$$\boxed{+8.479}$$

$$\boxed{+1.173}$$

SSRL
BL14 BREAK OUT

5-28-08
J.M., L.G.

(Y) 49.762 BOTTOM OF STAND
41.000 to B/L
8.762 HI

15.711 REF.
8.762 H/L
6.949 = B/L

14-2 AP.
6.949 B/L
.195
6.754 to BOTTOM
-0.004 set

14-1 AP
6.949
(+) .294 to B/L
6.655
.195 to top
6.850 to top
4.020 found
1.01 set

3.390
14-2 D/S FL
8.762
1.690 R
7.072 S/R
7.075
-0.003

3.370
14-1 D/S FL
8.762
1.685 R
7.077
-1.317 offset
7.394
7.383
-0.011

4.620
14-3 D/S FL
8.762
2.310 R
6.452
-1.850 OFFSET
5.602 S/R
5.586
-0.016

14-3 AP.
6.949
1.420 to BOT
6.529
.835
7.364 S/R
6.010 found
1.0 set

Breakout mask fiducialization data

	X	Y	Z
Breakout mask BL14-1 aperture	4.035	-0.294	504.331
Breakout mask BL14-2 aperture	0.000	0.000	504.331
Breakout mask BL14-3 aperture	4.035	0.834	504.331
Breakout flange BL14-1	-4.045	-0.317	506.999
Breakout flange BL14-2	0.000	0.000	511.937
Breakout flange BL14-3	4.040	0.850	506.550

Pivot mask fiducialization data

BL14-1 pivot mask u/s flange	-4.081	-0.376	510.164
BL14-1 pivot mask aperture	-4.510	-0.877	563.783
BL14-3 pivot mask u/s flange	4.081	0.912	510.068
BL14-3 pivot mask aperture	4.510	0.074	563.737

6/2/08 Jan Hanz