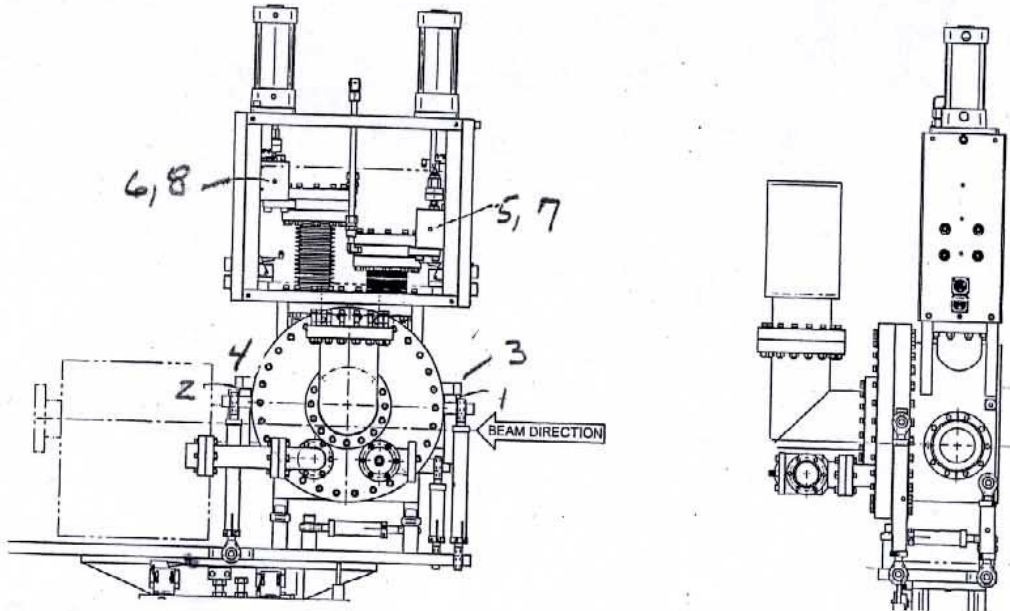


BL 14-3 HUTCH STOPPER



	X	Y	Z
1	3.831	3.391	-7.058
2	3.824	3.391	7.047
3	-2.196	2.852	-8.765
4	-2.215	2.868	8.731
5	2.986	13.709	-5.315
6	2.986	13.673	5.384
7	-3.019	13.707	-5.332
8	-3.019	13.688	5.388

BL14-3 HUTCH STOPPER

J.M., L.G.

(X)

1.800 o/s
1.800 u/s

BRICKS

18.600
18.737
20.000
19.939

u/s

u/s) 21.369
1.625
19.744 1/2
19.743

o/s) 19.744 1/2
19.743
+001

o/s
u/s) 21.369
1.625
19.744 1/2
19.750

o/s) 19.744 1/2
19.750
-006

+ 21.369 u/s

+001

-006

1) 16.538
1.000
17.538
21.369
+3.831

2) 16.545
1.000
17.545
21.369
+3.824

3) 22.565
1.000
23.565
21.369
-2.196

4) 22.584
1.000
23.584
21.369
-2.215

5) 17.383
1.000
18.383
21.369
+2.986

6) 17.383
1.000
18.383
21.369
+2.986

7) 6.505
1.500
6.005
2.986
-3.019

8) 6.505
1.500
6.005
2.986
-3.019 6-8

BL 14-3 HUTCH STOPPETZ

J.M., L.G.

④ 7.318 HI

$$\begin{array}{r} 1) \ 2.927 \\ \quad 1.000 \\ \hline 3.927 \\ 7.318 \end{array}$$

+3.391

$$\begin{array}{r} 2) \ 2.927 \\ \quad 1.000 \\ \hline 3.927 \\ 7.318 \end{array}$$

+3.391

$$\begin{array}{r} 3) \ 3.466 \\ \quad 1.000 \\ \hline 4.466 \\ 7.318 \end{array}$$

+2.852

$$\begin{array}{r} 4) \ 3.450 \\ \quad 1.000 \\ \hline 4.450 \\ 7.318 \end{array}$$

+2.868

$$\begin{array}{r} 5) \ 5.391 \\ \quad 1.000 \\ \hline +6.391 \\ 7.318 \end{array}$$

+13.709

$$\begin{array}{r} 6) \ 5.355 \\ \quad 1.000 \\ \hline +6.355 \\ 7.318 \end{array}$$

+13.673

$$\begin{array}{r} 7) \ 5.389 \\ \quad 1.000 \\ \hline +6.389 \\ 7.318 \end{array}$$

+13.707

$$\begin{array}{r} 8) \ 5.370 \\ \quad 1.000 \\ \hline +6.370 \\ 7.318 \end{array}$$

+13.688

TRAVEL

$$\begin{array}{r} 5) \ 5.391 \text{ DOWN} \\ \quad 8.400 \text{ UP} \\ \hline 3.009 \end{array} \Delta$$

$$\begin{array}{r} 6) \ 5.355 \text{ DOWN} \\ \quad 8.370 \text{ UP} \\ \hline 3.015 \end{array} \Delta$$

SSRL

3-3-08

BL 14-3 HUTCH STOPPER

J.M., L.C.

$$\textcircled{Z} \begin{array}{r} 16.617 \text{ READ u/s} \\ - 7.465 \\ \hline -24.082 \text{ COS} \end{array}$$

$$14.930 \text{ INSERT TO INS.} \\ \frac{1}{2} = 7.465$$

$$1) \begin{array}{r} 16.024 \\ - 1.000 \\ \hline 17.024 \\ - 24.082 \\ \hline -7.058 \end{array}$$

$$3) \begin{array}{r} 14.317 \\ - 1.000 \\ \hline 15.317 \\ - 24.082 \\ \hline -8.765 \end{array}$$

$$2) \begin{array}{r} 13.510 \\ - 17.619 \\ \hline 31.129 \\ - 24.082 \\ \hline +7.047 \end{array}$$

$$4) \begin{array}{r} 15.194 \\ - 17.619 \\ \hline 32.813 \\ - 24.082 \\ \hline +8.731 \end{array}$$

$$5) \begin{array}{r} 17.767 \\ - 1.000 \\ \hline 18.767 \\ - 24.082 \\ \hline -5.315 \end{array}$$

$$6) \begin{array}{r} 28.466 \\ - 1.000 \\ \hline 29.466 \\ - 24.082 \\ \hline +5.384 \end{array}$$

$$7) \begin{array}{r} 17.750 \\ - 1.000 \\ \hline 18.750 \\ - 24.082 \\ \hline -5.332 \end{array}$$

$$8) \begin{array}{r} 28.470 \\ - 1.000 \\ \hline 29.470 \\ - 24.082 \\ \hline +5.388 \end{array}$$

SSRL

3-3-08

BL 14-3 HUTCH STOPPER
SETTING BRICKS

J.M., L.C.

(Y)

15.810 ABOVE FRAME TOP
8.500 B/L ABOVE FRAME TOP

+7.310 HI

u/s & d/s
INSERTS
3.600 ϕ

BRICKS
3.250 X 3.250

PITCH u/s & d/s
INSERTS

ROLL
(+) SIDE FLANGE
FACE 13.250 ϕ
TOP & BOTTOM
16.988 B
11.986 T

INSERTS

	5.518		
	1.800 R		
	<u>7.318 HI</u>		
u/s) 7.310	d/s) 7.310		
1.800 R	1.800 R		
<u>5.510 3/4</u>	<u>5.510 3/4</u>		
5.518	5.518		
<u>-008</u>	<u>-008</u>		
		15.810 REF.	
		8.492 = ϕ	
		<u>11.038</u>	
		<u>2.546 HI</u>	

BRICKS d/s END

u/s

(+) 2.546
1.625 1/2
.921 3/4
.921
0

(-) .921 3/4
.920
+001

d/s

(+) 2.546
1.625
.921 3/4
.922
-001

(-) .921 3/4
.922
-001

u/s END (+)
.921 3/4
.924

-003