

SSRL

3-5-08

BL14-1 HUTCH STOPPER

J.M., L.G.

$$\begin{array}{r}
 \textcircled{Z} \\
 11.950 \\
 7.460 \\
 \hline
 + 19.410 \text{ LOS}
 \end{array}$$

14.920

1) $\begin{array}{r} 8.819 \\ 19.340 \\ \hline 28.159 \\ 19.410 \\ \hline -8.749 \end{array}$	2) $\begin{array}{r} 9.658 \\ 1.000 \\ \hline 10.658 \\ 19.410 \\ \hline +8.752 \end{array}$	3) $\begin{array}{r} 7.116 \\ 19.346 \\ \hline 26.456 \\ 19.410 \\ \hline -7.046 \end{array}$	4) $\begin{array}{r} 11.359 \\ 1.000 \\ \hline 12.359 \\ 19.410 \\ \hline +7.051 \end{array}$
---	--	---	---

5) $\begin{array}{r} 23.765 \\ 1.000 \\ \hline 24.765 \\ 19.410 \\ \hline -5.355 \end{array}$	6) $\begin{array}{r} 13.070 \\ 1.000 \\ \hline 14.070 \\ 19.410 \\ \hline +5.340 \end{array}$	7) $\begin{array}{r} 23.728 \\ 1.000 \\ \hline 24.728 \\ 19.410 \\ \hline -5.318 \end{array}$	8) $\begin{array}{r} 13.050 \\ 1.000 \\ \hline 14.050 \\ 19.410 \\ \hline +5.360 \end{array}$
---	---	---	---

SSRL

3-508

BL 14-1 HUTCH STOPPER

J.M., L.G.

(Y)
$$\begin{array}{r} 14.760 \\ - 8.500 \\ \hline 6.210 \text{ HI} \end{array}$$

FLANGES

u/s)
$$\begin{array}{r} 6.210 \\ - 2.313 \text{ R} \\ \hline 3.897 \text{ 3/4} \\ - 3.885 \\ \hline +.012 \end{array}$$

p/s)
$$\begin{array}{r} 3.897 \text{ 3/4} \\ - 3.887 \\ \hline +.010 \end{array}$$

FLANGES
4.625 ϕ

BRICKS
3.250 x 3.250

m + oil
$$\begin{array}{r} 3.886 \\ - 2.313 \text{ R} \\ \hline 6.199 \text{ HI} \\ - 14.760 \\ \hline 8.561 = \text{E} \end{array}$$

6.199 HI

BRICKS

u/s DISK END

o/s u/s END

+)
$$\begin{array}{r} 6.199 \\ - 1.625 \\ \hline 4.574 \text{ 3/4} \\ - 4.576 \\ \hline -.002 \end{array}$$

-)
$$\begin{array}{r} 4.574 \text{ 3/4} \\ - 4.575 \\ \hline -.001 \end{array}$$

+)
$$\begin{array}{r} 6.199 \\ - 1.625 \\ \hline 4.574 \text{ 3/4} \\ - 4.576 \\ \hline -.002 \end{array}$$

-)
$$\begin{array}{r} 4.574 \text{ 3/4} \\ - 4.577 \\ \hline -.003 \end{array}$$

T/B'S

1)
$$\begin{array}{r} 2.385 \\ - 1.000 \\ \hline 3.385 \\ - 6.199 \\ \hline +2.814 \end{array}$$

2)
$$\begin{array}{r} 2.377 \\ - 1.000 \\ \hline 3.377 \\ - 6.199 \\ \hline +2.822 \end{array}$$

3)
$$\begin{array}{r} 1.830 \\ - 1.000 \\ \hline 2.830 \\ - 6.199 \\ \hline +3.369 \end{array}$$

4)
$$\begin{array}{r} 1.830 \\ - 1.000 \\ \hline 2.830 \\ - 6.199 \\ \hline +3.369 \end{array}$$

5)
$$\begin{array}{r} 6.466 \\ - 1.000 \\ \hline 7.466 \\ - 6.199 \\ \hline +13.665 \end{array}$$

6)
$$\begin{array}{r} 6.513 \\ - 1.000 \\ \hline 7.513 \\ - 6.199 \\ \hline +13.712 \end{array}$$

7)
$$\begin{array}{r} 6.480 \\ - 1.000 \\ \hline 7.480 \\ - 6.199 \\ \hline +13.679 \end{array}$$

8)
$$\begin{array}{r} 6.502 \\ - 1.000 \\ \hline 7.502 \\ - 6.199 \\ \hline +13.701 \end{array}$$

$$\begin{array}{r} 4P \\ 9.496 \end{array}$$

$$\begin{array}{r} 4P \\ 9.515 \end{array}$$

$\Delta = 3.016$

$\Delta = 3.013$

SSRL

(X)

BL14-1 HUTCH STOPPET

3-5-08

J.M., L.G.

FL.
u/s) 2.313R

D/S) 2.318R

26.500
26.580
31.000
30.383

27.016
27.016

- 29.329 LOS

Roll

T 24.940
B 24.943

u/s

BRICKS

D/S

u/s) 29.329
1.625
27.704^{S/R}
27.700
-1.004

D/S) 27.704^{S/R}
27.697
-0.007

u/s) 29.329
1.625
27.704^{S/R}
27.708
+0.004

D/S) 27.704^{S/R}
27.706
+0.002

1) 30.600
1.000
31.600
29.329
+2.271

2) 30.463
1.000
31.463
29.329
+2.134

3) 24.479
1.000
25.479
29.329
-3.850

4) 24.500
1.000
25.500
29.329
-3.829

5) 6.516^{S/R}
1.500
6.016
3.019
+2.997

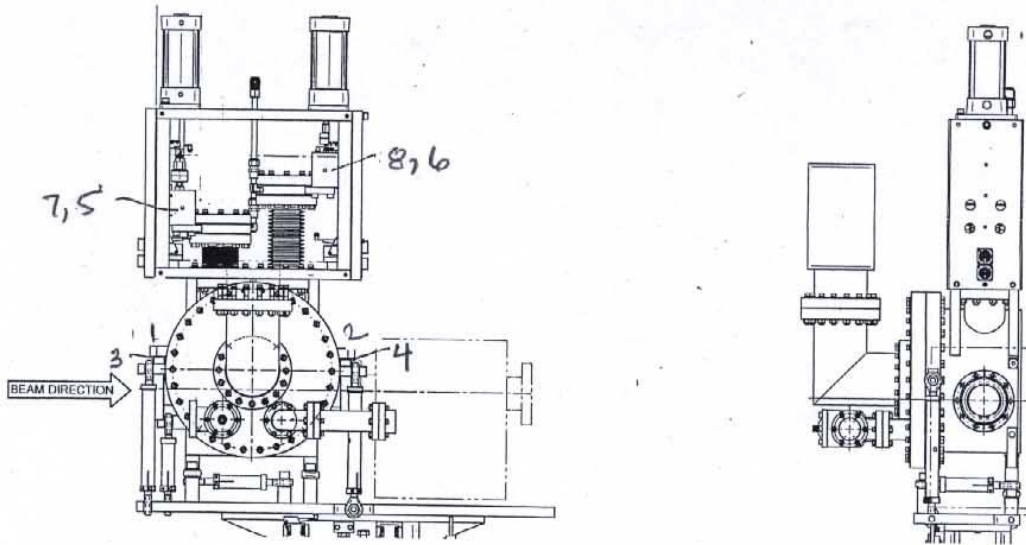
6) 6.509^{S/R}
1.500
6.009
2.989
+3.020

7) 25.310
1.000
26.310
29.329
-3.019

8) 25.340
1.000
26.340
29.329
-2.989

SSRL
BL 14-1 HUTCH STOPPER

3-5-08



	X	Y	Z
1	2.271	2.814	-8.749
2	2.134	2.822	8.752
3	-3.850	3.369	-7.046
4	-3.829	3.369	7.051
5	2.997	13.665	-5.355
6	3.020	13.712	5.340
7	-3.019	13.679	-5.318
8	-2.989	13.701	5.360