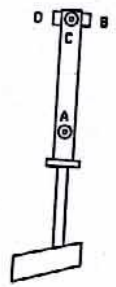


SSRL  
BL13 4 JAW SLIT ASSY  
TOP VERT. SLIT



SHORT ARM

	X	Y	Z
A	+2.014 ✓	+10.502 ✓	-1.400 ✓
B	+ .109 ✓	+17.003 ✓	-2.528 ✓
C	+2.110 ✓	+16.987 ✓	- .477 ✓
D	+10.78 ✓	+17.032 ✓	+1.530 ✓

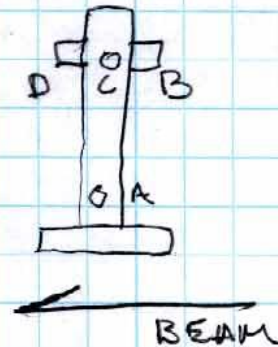
SSRL  
 BL 13 4JAW SLIT  
 TOP VERT. SLIT

S-23-07  
 J.M., L.G.

(X)

1.630 1/2 SLIT  
 .630

1.26



~~14.000~~

~~14.114~~

20.000

19.623

15.393

15.398

15.453

15.453

- 16.083 LOS

A) 7.220

10.877

18.097

16.083

+2.014

B) 15.192

1.000

16.192

16.083

+ .109

C) 7.316

10.877

18.193

16.083

+2.110

D) 15.161

1.000

16.161

16.083

+ .078

SSRL  
 BL 13 4 JAW SLIT  
 TOP VERTICAL SLIT

5-23-05  
 J.M., L.G.

⑦  $8.634 - .464 = 8.170$

$\sin 2.5^\circ \times 8.179'' = .356$

$\rightarrow .014 @ D/S EDGE$

$.342 S/R$

+ .056 to D/S EDGE

$.410$   
 $\hline .354 \Delta$

$\angle = 2.48^\circ$

(+) .056 to D/S EDGE = -.056 HI

11.130 REF

11.186 = BL

30.555 GUNZ

$\hline +19.369 HI$

A)  $7.867$

$1.000$

$\hline 8.867$

$\hline 19.369$

$\boxed{+10.502}$

B)  $1.366$

$1.000$

$\hline 2.366$

$\hline 19.369$

$\boxed{+17.003}$

C)  $1.382$

$1.000$

$\hline 2.382$

$\hline 19.369$

$\boxed{+16.987}$

D)  $1.337$

$1.000$

$\hline 2.337$

$\hline 19.369$

$\boxed{+17.032}$

SSRL

BL 13 4JAW SLIT

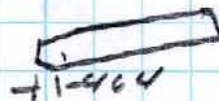
5-23-07

LAB DATA TOP VERTICAL SLIT  
SHORT ARM

J.M., L.G.

(2)

$$\begin{array}{r}
 15.774 \\
 + .464 \text{ to D/S EDGE (APERTURE)} \\
 \hline
 + 16.238 \text{ LOS}
 \end{array}$$



A) 
$$\begin{array}{r}
 15.638 \\
 + 1.000 \\
 \hline
 16.638
 \end{array}$$

$$\begin{array}{r}
 16.638 \\
 - 16.238 \\
 \hline
 -0.400
 \end{array}$$

-0.400

B) 
$$\begin{array}{r}
 4.558 \\
 + 1.500 \\
 \hline
 6.058
 \end{array}$$

$$\begin{array}{r}
 6.058 \\
 - 4.530 \\
 \hline
 1.528
 \end{array}$$

-2.528

C) 
$$\begin{array}{r}
 15.715 \\
 + 1.000 \\
 \hline
 16.715
 \end{array}$$

$$\begin{array}{r}
 16.715 \\
 - 16.238 \\
 \hline
 0.477
 \end{array}$$

-0.477

D) 
$$\begin{array}{r}
 13.708 \\
 + 1.000 \\
 \hline
 14.708
 \end{array}$$

$$\begin{array}{r}
 14.708 \\
 - 13.178 \\
 \hline
 1.530
 \end{array}$$

+1.530