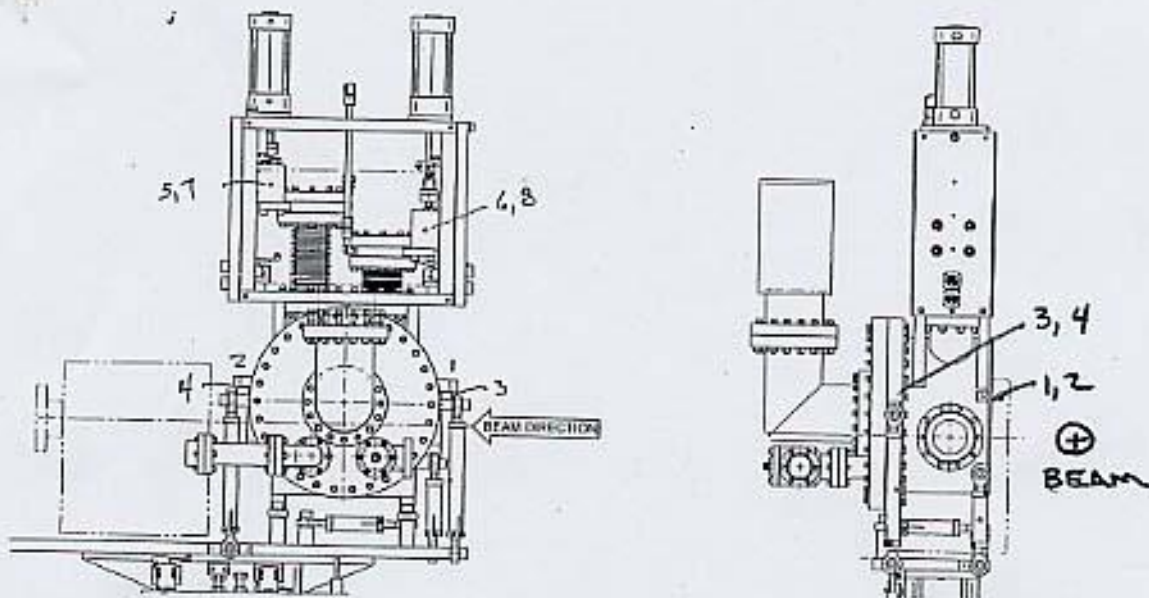


SSRL BL 12-2 HUTCH STOPPER



	X	Y	Z
1	-2.101	+2.816	-8.729
2	-2.101	+2.822	+8.782
3	+3.827	+3.357	-7.025
4	+3.857	+3.386	+7.075
5	-3.002	+13.678	—
6	-3.029	+13.668	—
7	+3.013	+13.672	—
8	+2.986	+13.662	—

5-8 STOPPERS IN BEAM

SSRL BL 12-2
HUTCH STOPPER

4-6-06
J.M., L.G.

(X)

Check
gm

$$\begin{array}{r} 21.356 \\ 2.313 R \\ \hline + 23.669 \text{ LOS} \end{array}$$

$$\begin{array}{r} 1) \ 24.770 \\ 1.000 \\ \hline 25.770 \\ 23.669 \\ \hline -2.101 \end{array}$$

$$\begin{array}{r} 2) \ 24.770 \\ 1.000 \\ \hline 25.770 \\ 23.669 \\ \hline -2.101 \end{array}$$

$$\begin{array}{r} 3) \ 18.842 \\ 1.000 \\ \hline 19.842 \\ 23.669 \\ \hline +3.827 \end{array}$$

$$\begin{array}{r} 4) \ 18.812 \\ 1.000 \\ \hline 19.812 \\ 23.669 \\ \hline +3.857 \end{array}$$

$$\begin{array}{r} 5) \ 6.515 \text{ (5-7)} \\ 1.500 \\ \hline 6.015 \\ 3.013 \\ \hline -3.002 \end{array}$$

$$\begin{array}{r} 6) \ 6.515 \text{ (6-8)} \\ 1.500 \\ \hline 6.015 \\ 2.986 \\ \hline -3.029 \end{array}$$

$$\begin{array}{r} 7) \ 19.656 \\ 1.000 \\ \hline 20.656 \\ 23.669 \\ \hline +3.013 \end{array}$$

$$\begin{array}{r} 8) \ 19.683 \\ 1.000 \\ \hline 20.683 \\ 23.669 \\ \hline +2.986 \end{array}$$

SSRL BLIZ-Z
HUTCH STOPPER

4-6-06
J.M., L.G.

check
off

① + 5.250

$$\begin{array}{r} 1) \ 1.434 \\ \quad 1.000 \\ \hline 2.434 \\ \quad 5.250 \\ \hline \boxed{+2.816} \end{array}$$

$$\begin{array}{r} 2) \ 1.428 \\ \quad 1.000 \\ \hline 2.428 \\ \quad 5.250 \\ \hline \boxed{+2.822} \end{array}$$

$$\begin{array}{r} 3) \ 0.893 \\ \quad 1.000 \\ \hline 1.893 \\ \quad 5.250 \\ \hline \boxed{+3.357} \end{array}$$

$$\begin{array}{r} 4) \ 0.864 \\ \quad 1.000 \\ \hline 1.864 \\ \quad 5.250 \\ \hline \boxed{+3.386} \end{array}$$

$$\begin{array}{r} 9.933 \text{ REF.} \\ 5.250 \text{ HI} \\ \hline 4.683 = \text{¢} \end{array} \quad \begin{array}{r} 30.122 \\ 4.683 \\ \hline 25.439 \text{ HI} \end{array}$$

$$\begin{array}{r} 5) \ 10.761 \\ \quad 1.000 \\ \hline 11.761 \\ \quad 25.439 \\ \hline \boxed{+13.678} \end{array}$$

$$\begin{array}{r} 6) \ 10.771 \\ \quad 1.000 \\ \hline 11.771 \\ \quad 25.439 \\ \hline \boxed{+13.668} \end{array}$$

$$\begin{array}{r} 7) \ 10.767 \\ \quad 1.000 \\ \hline 11.767 \\ \quad 25.439 \\ \hline \boxed{+13.672} \end{array}$$

$$\begin{array}{r} 8) \ 10.777 \\ \quad 1.000 \\ \hline 11.777 \\ \quad 25.439 \\ \hline \boxed{+13.662} \end{array}$$

SSRL BL 12-2
HUTCH STOPPER

4-6-06
J.M., L.G.

check
JM

$$\begin{array}{r} \textcircled{Z} \quad 7.814 \\ \quad 8.281 \text{ w/s FL (COVERED)} \\ \hline -16.095 \text{ LOS} \end{array}$$

$\begin{array}{r} 1) \quad 6.366 \\ \quad 1.000 \\ \hline \quad 7.366 \\ \quad 16.095 \\ \hline \boxed{-8.729} \end{array}$	$\begin{array}{r} 3) \quad 8.070 \\ \quad 1.000 \\ \hline \quad 9.070 \\ \quad 16.095 \\ \hline \boxed{-7.025} \end{array}$	$\begin{array}{r} 2) \quad 18.011 \\ \quad 1.500 \\ \hline \quad 17.511 \\ \quad 8.729 \\ \hline \boxed{+8.782} \end{array}$	$\begin{array}{r} 4) \quad 14.600 \\ \quad 1.500 \\ \hline \quad 14.100 \\ \quad 7.025 \\ \hline \boxed{+7.075} \end{array}$
---	---	--	--

SSRL
BL 12-2 HUTCH STOPPER

4-6-06
J.M., L.G.

(Y)

LEVELLED TO BOTTOM OF STAND BL +35.000
FROM BOTTOM. ROLL TAKEN OUT ON FACE
OF 13.25" FLANGE (TANK), U/S & D/S FLANGES
X, Y = \emptyset

BRICKS

46.250
35.000
+5.250 HI

Roll & EL.

u/s	d/s	d/s	d/s
(+) 5.250	(-) 3.625 s/r	(+) 3.625 s/r	(-) 3.625
1.625 1/2 BRICK	3.622	3.625	3.620
3.625 s/r	<u>+003</u>	<u>\emptyset</u>	<u>+005</u>
3.624			
<u>+001</u>			

(X) +23.669 WS

YAW & "X"

u/s	d/s	u/s	d/s
u/s) 23.669	d/s) 22.044 s/r	u/s) 22.044 s/r	d/s) 22.044 s/r
1.625	22.053	22.048	22.045
22.044 s/r	<u>-009</u>	<u>-004</u>	<u>-001</u>
22.050			
<u>-006</u>			

PITCH (TRANSIT)

u/s	d/s
TOP \emptyset	TOP \emptyset
BOT. +002	BOT. -003

SSRU
12-2
HUTCH STOPPER

4-6-06
J.M., L.G.

(X)

7-5
6.515

6-8
6.515

(Z)

1-2
18.011

3-4
14.600

FL to FL
16.562

TRAVEL "Y"

7	8
10.767	10.777
-3. —	-3. —
<hr/>	<hr/>
7.767 S/R	7.777 S/R
7.752	7.760
<hr/>	<hr/>
+ 1.015	+ 1.017

SSRL BL 12-2
HUTCH STOPPER

4-6-06
J.M., L.G.

(Y)

LEVELED BOTTOM OF STAND BL +.35.000 FROM Bottom
Roll TAKEN OUT ON FALE OF 13.25 FLANGE

40.250
35.000
+5.250 HI

TANK FLANGES (PITCH)

Roll on BRICKS

u/s) 5.250
2.313 R
2.937 s/r
2.937
0

o/s) 2.937 R
2.937
0

u/s)		o/s	
+	-	+	-
5.250	+3	0	+010
<u>1.625 1/2</u>			
3.625 s/r			
+1			

(X)

20. —
19.460
12. —
14.142
18.389
18.389

+ 23.669 W/S

YAW ON BRICKS

4.625

u/s) 23.669
1.625
22.044 s/r

o/s) 4.625
u/s) 048
o/s) 045

13.702

14 24
90 055
050
051 054