

BPM

	X	Y	Z
A	+8.542	-1.955	-2.005
B	+8.542	-1.910	+1.732
C	-7.064	-2.099	-3.806
D	-7.082	-2.027	+3.672

TANK

	X	Y	Z
1	+0.002	+5.491	-8.038
2	+0.037	+5.481	+5.485
3	+5.527	+0.016	-3.002
4	+5.507	-0.007	+3.008

Z's TO & BPM

SSRL
BL10 BPM
LAB DATA

8-5-05
J.M., L.G.

Y

Check

+0.009 to DIS END OF TARGET

17.282 VALUE OF DIS END

+0.273 HI

3.139 REF. BLADE

2.866 = ϵ

16.953 REF

14.087 HI

BPM

A) 15.042

1.000

16.042

14.087

-1.955

B) 14.997

1.000

15.997

14.087

-1.910

C) 15.186

1.000

16.186

14.087

-2.099

D) 15.114

1.000

16.114

14.087

-2.027

X

+0.021 to (+) SIDE OF TARGET

39.342 REF. BLADE

39.321 (+) SIDE ON REF

0.438 1/2 TARGET

39.759 =

160.996 OFFSET to (+) SIDE

38.763 = ϵ

38.763 ϵ

14.000 REF. READING

+24.763 LOS

(A+B)

38.763 ϵ

57.000

-18.237 LOS

(C+D)

A) 15.221

1.000

16.221

24.763

+8.542

B) 15.221

1.000

16.221

24.763

+8.542

C) 10.173

1.000

11.173

18.237

-7.064

D) 10.155

1.000

11.155

18.237

-7.082

SSRL
BL 10 BPM
LAB DATA

8-5-05
J.M., L.G.

check
JM

(Z)

19.885 u/s FACE
2.683 1/2 TARGET

- 22.568 LOS

$$5.396 \times \cos 6^\circ = 5.366/2 = 2.683$$

BPM

A) 19.563
1.000

20.563
22.568

- 2.005

B) 23.300
1.000

24.300
22.568

+ 1.732

C) 6.234
12.528

18.762
22.568

- 3.804

D) 7.978 (L-D)
1.500

7.478
- 3.806

+ 3.672

TANK

1) 13.530
1.000

14.530
22.568

- 8.038

SSRL
BL 10 BPM
LAB DATA
TANK

8-4-05
J.M., L.G.

Ⓚ

$$\begin{array}{r} \text{check on} \\ 415) 4.982 R \\ \quad 9.112 \\ \hline 14.094 \end{array} \quad \begin{array}{r} 015) 4.362 R \\ \quad 9.735 \\ \hline 14.097 \end{array}$$

$$\bar{m} = 14.096 HI$$

9.735 d/s
 8.723 insert
 9.964 u/s

$\begin{array}{r} 1) 7.605 \\ \quad 1.000 \\ \hline 8.605 \\ \quad 14.096 \\ \hline \boxed{+5.491} \end{array}$	$\begin{array}{r} 2) 7.615 \\ \quad 1.000 \\ \hline 8.615 \\ \quad 14.096 \\ \hline \boxed{+5.481} \end{array}$	$\begin{array}{r} 3) 13.080 \\ \quad 1.000 \\ \hline 14.080 \\ \quad 14.096 \\ \hline \boxed{+0.016} \end{array}$	$\begin{array}{r} 4) 13.103 \\ \quad 1.000 \\ \hline 14.103 \\ \quad 14.096 \\ \hline \boxed{-0.007} \end{array}$
---	---	---	---

Ⓧ

$$\begin{array}{r} 4.362 R \\ 4.982 R \\ 20.000 \\ 19.455 \\ 27.000 \\ 25.212 \\ 20.422 \\ 19.802 \\ \hline + 24.784 LOS \end{array}$$

72

$\begin{array}{r} 1) 16.225 \\ \quad 8.557 \\ \hline 24.782 \\ \quad 24.784 \\ \hline \boxed{+0.002} \end{array}$	$\begin{array}{r} 2) 16.190 \\ \quad 8.557 \\ \hline 24.747 \\ \quad 24.784 \\ \hline \boxed{+0.037} \end{array}$	$\begin{array}{r} 3) 10.700 \\ \quad 8.557 \\ \hline 19.257 \\ \quad 24.784 \\ \hline \boxed{+5.527} \end{array}$	$\begin{array}{r} 4) 10.720 \\ \quad 8.557 \\ \hline 19.277 \\ \quad 24.784 \\ \hline \boxed{+5.507} \end{array}$
---	---	---	---

SSRL
BL10 BPM
LAB DATA
TANK

8-4-05
J.M., L.G.

② Clock sm
4/3 FACE)
$$\begin{array}{r} 15.644 \\ 9.255 \\ \hline 24.899 \text{ LOS} \end{array}$$
 $18.510/2 = 9.255 \text{ } \frac{1}{2} \text{ TANK}$

TO & OF TANK

1) $\begin{array}{r} 17.147 \\ 1.000 \\ \hline 18.147 \\ 24.899 \\ \hline -6.752 \end{array}$	2) $\begin{array}{r} 19.142 \\ 12.528 \\ \hline 31.670 \\ 24.899 \\ \hline +6.771 \end{array}$	3) $\begin{array}{r} 22.183 \\ 1.000 \\ \hline 23.183 \\ 24.899 \\ \hline -1.716 \end{array}$	4) $\begin{array}{r} 6.510 \text{ (3-4)} \\ 1.500 \\ \hline 6.010 \\ 1.716 \\ \hline +4.294 \end{array}$
---	--	---	--

TO & OF BPM

1) $\begin{array}{r} -6.752 \\ -8.038 \\ \hline -1.286 \end{array}$	2) $\begin{array}{r} +6.771 \\ -1.286 \\ \hline +5.485 \end{array}$	3) $\begin{array}{r} -1.716 \\ -1.286 \\ \hline -3.002 \end{array}$	4) $\begin{array}{r} +4.294 \\ -1.286 \\ \hline +3.008 \end{array}$
$\begin{array}{r} -8.038 \end{array}$			

SSRL
BL 10 BPM
LAB DATA

8-5-05
J.M., L.G.

(X)

$$\begin{array}{r} 14.000 \text{ REF. BLADE} \\ + 24.784 \text{ LOS} \\ \hline 38.784 = \phi \text{ ON BLADE} \end{array}$$

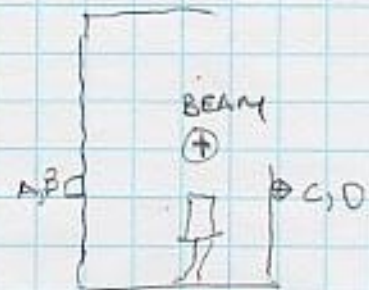
R
S
S

875

BPM TARGET.

$$\begin{array}{r} 38.784 \\ - 0.996 \\ \hline 39.780 \\ + .438 \text{ } \frac{1}{2} \text{ TARGET} \\ \hline 39.342 \text{ to } (+) \text{ SIDE} \end{array}$$

$$u(s) + 0.020 \quad o(s) + 0.022$$



(Y)

$$\sin 6^\circ \times 5.396'' = .564 / 2 = .282''$$

$$\begin{array}{r} 16.953 \text{ REF.} \\ - 14.096 \\ \hline 2.857 = \phi \\ + .282 \text{ to TOP OF TARGET} \\ \hline 3.139 \end{array}$$

$$\begin{array}{r} + \text{ DIS} \\ + 0.09 \\ + 0.009 \text{ } \bar{m} = .009 \\ \hline u(s) \\ .557 \end{array}$$