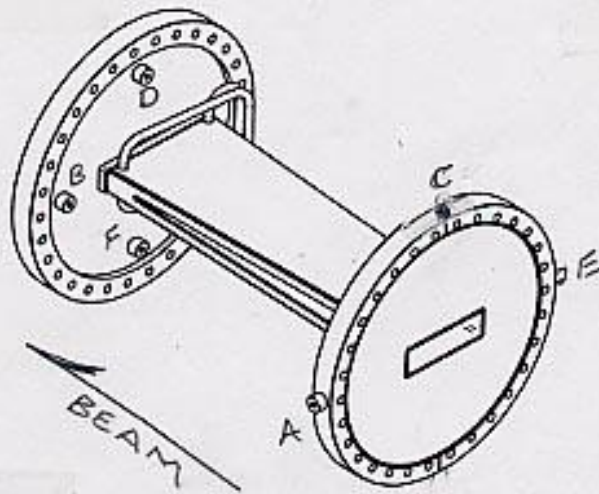


SSRL B/L10  
2ND FIXED MASK

2/05



	X	Y	Z
A	+8.100	+ .004	-16.361
B	+4.490	- .007	+3.329
C	- .015	+9.503	-16.316
D	- .005	+4.505	+ .354
E	-8.123	+ .003	-16.379
F	+ .002	-4.504	+ .306

\* Z ZERO IS U/S END OF APERTURE \*

LAB DATA

SSRL

2/24/05

B/L 10 2<sup>ND</sup> FIXED MASK  
REDO

J.M., L.G.

(2)

16.750 D/S INNER FACE OF BRASS BODY

15.346 U/S END OF APERTURE

+ 1.404 FROM APERTURE

20.215

+ 21.619 COS

A) 36.980

1.000

37.980

21.619

-16.361

B) 14.390

6.900

21.290

21.619

+ .329

C) 36.935

1.000

37.935

21.619

-16.316

D) 14.365

6.900

21.265

21.619

+ .354

E) 36.998

1.000

37.998

21.619

-16.379

F) +.326 from 10-1404

-.020 M Δ BFD

+ .306

LAB DATA

SSRL

2-24-05

B/L 10 2<sup>ND</sup> FIXED MASK

J.M., L.G.

REDO

④ 4,008 TOP OF APERTURE (.232)

1,116 1/2 GAP  
3,892 = REF.

16.926 READ  
3.892 REF

1,520 1/2 u/s GAP

+13.034 HI

3,372 BOT OF u/s GAP

1,040 u/s GAP PER PRINT

4,412 TOP OF u/s GAP

+1,003 MIC GOOD

A) 12.030  
1.000

13.030

13.034

+0.004

B) 12.041  
1.000

13.041

13.034

-0.007

C) 2.531  
1.000

3.531

13.034

+9.503

D) 7.529  
1.000

8.529

13.034

+4.505

E) 12.037  
1.000

13.037

13.034

-0.003

F) 8.981  
8.557 offset ft

17.538

13.034

-4.504

LAB DATA

SSRL  
B/L 10 2<sup>ND</sup> FIXED MASK

2/24/05  
J.M., L.L.

(X)

+1.738 SSRL INSIDE MASK  
(-).100 BUCK IN

E-A 16.723

+1.638 LOS  
29.000 REF.

30.638 = E ON REF  
10.000

+20.638 LOS

A) 11.538  
1.000

12.538  
20.638

+8.100

B) 15.148  
1.000

16.148  
20.638

+4.490

C) 19.653  
1.000

20.653  
20.638

-1.015

D) 19.643  
1.000

20.643  
20.638

-.005

E) 16.723 E-A  
.500 T/B

16.223  
8.100 A VALUE

-8.123

F) 19.640  
1.000

20.640  
20.638

-.002

LAB  
DATA

SSRL  
B/LIA 2ND FIXED MASK

2/24/05  
J.M., L.G.

(4)

D/S GUN

BOTTOM OF APERTURE 3.862 REF.  
TOP " " " 4.084

.222  
(1).010 MIC to Top

.232 GAP .116 1/2 GAP

3.862 Bot REF

3.978 =  $\epsilon$   
1.520 1/2 uts GAP

3.458

200 $\mu$ m

TOPD/S

3.989

.116

3.873 $\epsilon$

.1520

3.353

+ .019

3.989

4.008 TOPD/S

.116

3.892 =  $\epsilon$

1.520 1/2 GAP to Bot

3.372

-.080 MIC

3.452 S/R