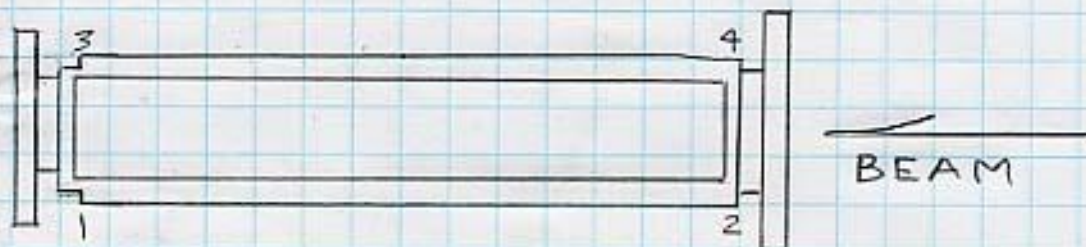


SS RL  
BL 9-3 PIVOT MASK

10-05



	X	Y
1	+1.794	+ .538
2	+1.794	+2.402
3	-1.794	+ .542
4	-1.794	+2.402

Z FOR 1-2 & 3-4 = 28.250"

READ AT CORNERS  
VALUES

Y ARE FROM U/S PIN & CENTER  
OF DIS APERTURE

X CENTER OF TOP SURFACE OF  
MASK BODY

\* THERE IS AN OFFSET IN X & YAW  
ANGLE TO BE SET IN THE FIELD  
AND Y OFFSET



SSRL  
BL 9-3 PIVOT MASK  
CLEAN ROOM

10-24-05  
J.M., L.G.

Chick

(X)

1.794  
1.794  
9.500  
9.055  
7.000  
7.056  
7.279  
7.279  
+ 9.073 WS

3.588 (3.575)

(1.446)

1,000 REF  
+ 9.073 WS  

---

10.073 =  $\phi$

APERTURE

(+) 10.073  
    .723  

---

    9.350 S/R  
     $\phi$

(-) 10.073  
    .723  

---

    10.796 S/R  
     $\phi$

1) +1.794

2) +1.794

3) -1.794 4) -1.794

(Z) 1-2 = 28.250"  
    3-4 = " " " "

(Z) 28.250"

SSRL  
BL 9-3 PIVOT MASIL  
CLEARROOM

10-24-05  
J.M., L.G.

(Y)

1/8 APERTURE

1250

1125  
(-).015 to Bot

-110 HI

-009

-116 HI

.118

PINS

u/s) 2.402

-110  
-2.402

2.292

.059 R

2.233 5/2

2.233

.116  
2.402

2.286

.059

2.227 1/2

.121

o/s) .330

-110  
-.330

.220

.061 R

1.595 1/2

.173

.165

.116  
.330

.174

.142 + 8

5.078 REF

(-).116 HI

5.194 =  $\phi$

.125 1/2 GAP

5.319 to TOP

.250 + GAP

5.069 Bottom

.250

.007

.243 GAP

.122 1/2

5.069

5.191 =  $\phi$

APERTURE  $\phi$

13.960

5.191  $\phi$

+ 8.769 HI

PINS

u/s) 8.769

-2.402

11.171

.059 1/2 P.W.

11.112 5/2

11.111

+0.001

o/s) 8.769

-1.330

9.099

.061

9.038 5/2

9.049

-0.010