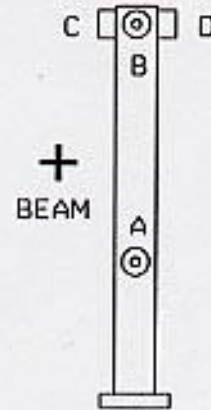
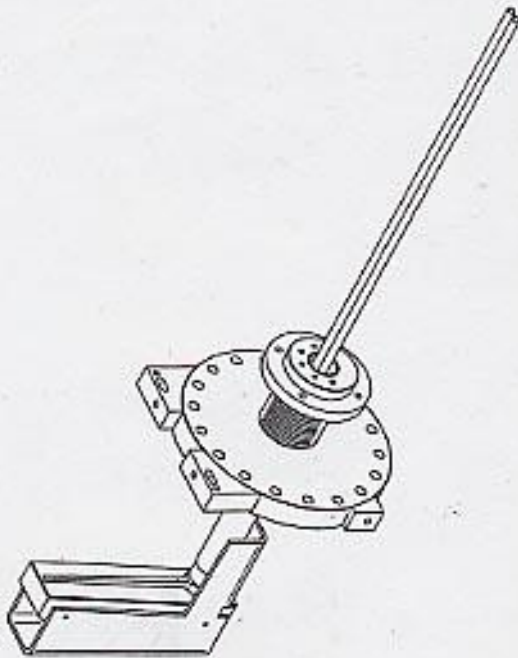


SSRL  
BL 7-2,3 DIS TOP SLIT

8/05



LONG ARM

	X	Y	Z
A	+0.041	+18.571	-2.807
B	+0.057	+25.067	-2.883
C	+2.148	+25.079	-0.895
D	-1.861	+25.105	-0.819

SSRL

BL7-2,3 DISTOP SCIT  
LAB DATA

8-8-05  
J.M., F.G., H.I.

(X) .752  
 .752  
 24.200  
 24.048  
 21.048  
 21.101  
 21.863  
 21.863  
 + 22.615 LOS

A) 21.574  
1.000

22.574  
22.615

+ .041

B) 21.558  
1.000

22.558  
22.615

+ .057

C) 19.467  
1.000

20.467  
22.615

+ 2.148

D) 4.559  
1.500

4.009  
2.148

- 1.861

Check  
3m

SSRL  
BL 7-2, 3

TOP D/S  
SLIT

HI, FG  
8-8-05

y)

$$\begin{array}{r}
 \text{LOW} \quad +.005 \\
 \quad \quad \quad .365 \\
 \hline
 \text{PL} \quad \quad .360 \quad \Delta \quad +.006 \quad \backslash \quad \begin{array}{r} 8.960 \\ +.005 \text{ MK} \\ \hline 8.965 = \text{BL} \end{array}
 \end{array}$$

$$\begin{array}{r}
 \text{HIGH GUN} \quad 31.620 \\
 \quad \quad \quad 8.965 \\
 \hline
 \quad \quad \quad 22.655 \quad \text{HI}
 \end{array}$$

$$\begin{array}{r}
 \text{A)} \\
 22.655 \\
 \quad 3.084 \\
 \hline
 19.571 \\
 \quad \quad 1 \text{ ---} \\
 \hline
 18.571 \\
 \hline
 22.655 \\
 \quad 3.084 \\
 \hline
 19.571
 \end{array}$$

$$\begin{array}{r}
 \text{B)} \\
 22.655 \\
 \quad -(-1.412) \\
 \hline
 24.067 \\
 \quad \quad -(-1 \text{ ---}) \\
 \hline
 25.067 \\
 \hline
 22.655 \\
 \quad 3.084 \\
 \hline
 19.571
 \end{array}$$

$$\begin{array}{r}
 \text{C)} \\
 22.655 \\
 \quad -(-1.424) \\
 \hline
 24.079 \\
 \quad \quad -(-1 \text{ ---}) \\
 \hline
 25.079 \\
 \hline
 22.655 \\
 \quad 3.084 \\
 \hline
 19.571
 \end{array}$$

$$\begin{array}{r}
 \text{D)} \\
 22.655 \\
 \quad -(-1.450) \\
 \hline
 24.105 \\
 \quad \quad -(-1 \text{ ---}) \\
 \hline
 25.105 \\
 \hline
 22.655 \\
 \quad 3.084 \\
 \hline
 19.571
 \end{array}$$

SSRL

8-8-05

BL 7-2, 3 TOP P/S SUIT

J.M., FG, HI, L.G.

Z) <sup>C break</sup>  
30

$$\begin{array}{r}
 6.384 \text{ Length} \\
 4.975 \text{ RD} \\
 \hline
 -11.359 \text{ LOS}
 \end{array}$$

A) 7.552

$$\begin{array}{r}
 1 \\
 \hline
 8.552 \\
 11.359 \\
 \hline
 -2.807
 \end{array}$$

B) 7.476

$$\begin{array}{r}
 1 \\
 \hline
 8.476 \\
 11.359 \\
 \hline
 -2.883
 \end{array}$$

C) 9.464

$$\begin{array}{r}
 1 \\
 \hline
 10.464 \\
 11.359 \\
 \hline
 -0.895
 \end{array}$$

D) 9.540

$$\begin{array}{r}
 1 \\
 \hline
 10.540 \\
 11.359 \\
 \hline
 -0.819
 \end{array}$$