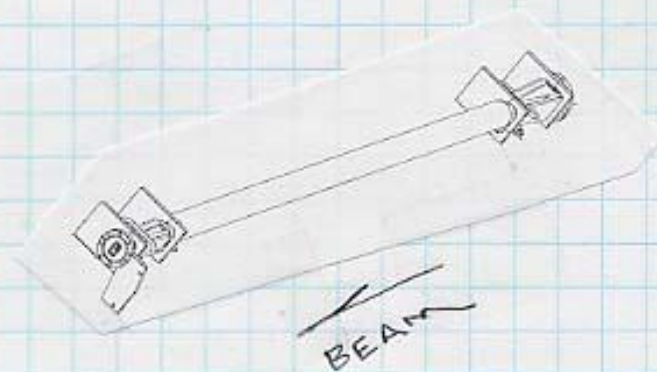


SSRL
BL7-1 PIVOT MASK

11-05



U/S FLANGE

X) +SIDE -1.011
-SIDE -5.631

Y) TOP +3.935
BOTTOM -1.685

D/S APERTURE

X) +SIDE -2.704
-SIDE -4.570

Y) +2.844 TO \pm TOP
D/S END OF MASK

SSRL
BL7-1 PIVOT MASK
GIRDER @ 0 MRAD.

11-4-05
L.G.

U/S FLANGE

(X) 2.310 RADIUS
- 3.321 ϕ OF FLANGE IN FIELD
-1.011 TO (+) SIDE OF FLANGE

(Y) 2.310 RADIUS
(+) 1.625 ϕ OF FLANGE IN FIELD
+3.935 TO TOP OF FLANGE

APERTURE

(X) .933 $\frac{1}{2}$ BODY
- 3.637 ϕ APER. IN FIELD
-2.704 TO (+) SIDE OF MASK

(Y) +.569 D/S END OF MASK
(+) 2.375 ϕ APER. IN FIELD
+2.844 TO \pm SIDES OF D/S MASK

SSRL
BL 7-1 PIVOT MASK
FOR INSIGHT
@ DMRAD.

9-29-05
J.M., L.G.

(Y)

U/S FLANGE
2.310 R
(+) .058 offset

+2.368

D/S FLANGE
1.685 R
(-) .008 W/PER. @ ϕ

+1.677

MASK 2

D/S
(+) 11.630
12.199 HZ

+1.569

(-) 11.630
12.199

+1.569

(X)

FLANGES
U/S) 2.310 R
(-) .214 offset

2.096
(-) .007 APER @ ϕ
+2.089

D/S) 1.685 RADIUS
(-) .002 APER. @ ϕ

+1.683

\approx APER to
D/S BODY

MASK 2

D/S
(+) .935

(-) .933

9.5
.500
.188
312

(Z)

U/S FLANGE @
575.185

D/S FLANGE @
575.185 + 100 - .75 = 674.435

APERTURE MASK 2 = 673.312 + .250 to D/S BODY

673.562

Check
5m

SSRL
BL 7-1 PIVOT MASK
CLEAN ROOM

9-28-05
J.M., L.G.

(X)

1.366 M1
.933 M2
11.000
10.752
4.000
7.251
9.638
10.071
11.004 LOS

BODY

MASK 1 D/S

9.638 S/R
9.625
- +.013

MASK 2 U/S

10.071 S/R
10.070
- +001

FLANGES

u/s) 11.004
2.310

8.694
6.214
8.908 S/R
8.915

- 007

d/s) 11.004
1.685

9.319 S/R
9.321

- 002

TRANSITIONS

2) 11.004
1.250 R
9.754 S/R
9.746

+ 008

3) 9.754 S/R
9.755

- 001