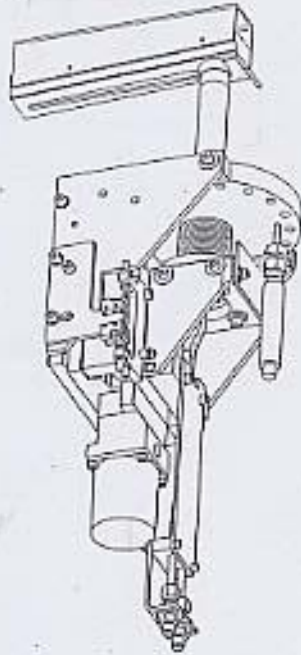


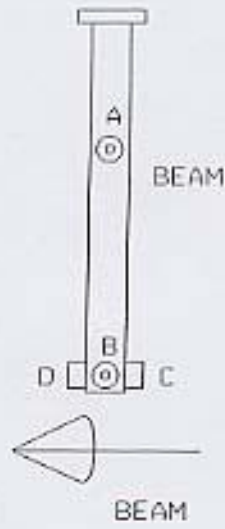
SSRL (UNIT #1)  
 BLS-0 U/S VERTICAL SLIT

12/05

BEAM



U/S VERT. SLIT



	X	Y	Z
A	+2.053	-14.936	+ .014
B	+2.078	-21.432	+ .154
C	+ .081	-21.486	-1.914
D	+ .056	-21.414	+2.144

LONG ARM

SSRL

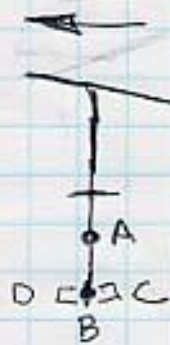
11-15-05  
M.R., L.G.

check

BL 50 u/s VERT. SLIT (UNIT #1)  
LAB DATA (BOTTOM)

(X)

.950  
 .950  
~~20.000~~  
~~20.172~~  
 25.000  
 24.698  
~~23.976~~ 21.814  
~~23.977~~ 21.814 821  
~~23.959~~ 21.886  
~~23.959~~ 21.886  
 + 22.836 LOS



\* LONG ARM

A) 17.989  
 6.900  
 -----  
 24.889  
 22.836  
 -----  
 + 2.053

B) 18.014  
 6.900  
 -----  
 24.914  
 22.836  
 -----  
 + 2.078

C) 16.017  
 6.900  
 -----  
 22.917  
 22.836  
 -----  
 + .081

D) 15.992  
 6.900  
 -----  
 22.892  
 22.836  
 -----  
 + .056

SSRL

11-14-05  
J.M., L.G.

BL 5-0 w/5 VERTICAL SLIT (UNIT #1)  
LAB DATA (BOTTOM)  
check

(Y) +.063 to Bottom P/L EDGE  
.866 to w/s to SET 8°

$\Delta Y = .866$

$\frac{.9295}{.928}$   
 $\frac{.9295}{.928} = 1.001$

8.716 REF.  
(+).063 HI  
 $\frac{8.716}{.928} = 9.286$   
28.065 REF  
 $\frac{28.065}{.928} = 30.252$   
 $\frac{30.252}{.928} = 32.600$   
 $\frac{32.600}{.928} = 35.130$   
 $\frac{35.130}{.928} = 37.856$   
 $\frac{37.856}{.928} = 40.792$   
 $\frac{40.792}{.928} = 43.850$   
 $\frac{43.850}{.928} = 46.926$   
 $\frac{46.926}{.928} = 50.130$   
 $\frac{50.130}{.928} = 53.472$   
 $\frac{53.472}{.928} = 57.940$   
 $\frac{57.940}{.928} = 62.540$   
 $\frac{62.540}{.928} = 67.272$   
 $\frac{67.272}{.928} = 72.136$   
 $\frac{72.136}{.928} = 77.130$   
 $\frac{77.130}{.928} = 82.252$   
 $\frac{82.252}{.928} = 87.500$   
 $\frac{87.500}{.928} = 92.872$   
 $\frac{92.872}{.928} = 98.370$   
 $\frac{98.370}{.928} = 105.992$   
 $\frac{105.992}{.928} = 113.770$   
 $\frac{113.770}{.928} = 121.712$   
 $\frac{121.712}{.928} = 129.850$   
 $\frac{129.850}{.928} = 138.100$   
 $\frac{138.100}{.928} = 146.452$   
 $\frac{146.452}{.928} = 154.910$   
 $\frac{154.910}{.928} = 163.472$   
 $\frac{163.472}{.928} = 172.140$   
 $\frac{172.140}{.928} = 180.912$   
 $\frac{180.912}{.928} = 189.790$   
 $\frac{189.790}{.928} = 198.772$   
 $\frac{198.772}{.928} = 207.860$   
 $\frac{207.860}{.928} = 217.052$   
 $\frac{217.052}{.928} = 226.350$   
 $\frac{226.350}{.928} = 235.752$   
 $\frac{235.752}{.928} = 245.260$   
 $\frac{245.260}{.928} = 254.872$   
 $\frac{254.872}{.928} = 264.590$   
 $\frac{264.590}{.928} = 274.412$   
 $\frac{274.412}{.928} = 284.340$   
 $\frac{284.340}{.928} = 294.372$   
 $\frac{294.372}{.928} = 304.510$   
 $\frac{304.510}{.928} = 314.752$   
 $\frac{314.752}{.928} = 325.100$   
 $\frac{325.100}{.928} = 335.552$   
 $\frac{335.552}{.928} = 346.110$   
 $\frac{346.110}{.928} = 356.772$   
 $\frac{356.772}{.928} = 367.540$   
 $\frac{367.540}{.928} = 378.412$   
 $\frac{378.412}{.928} = 389.390$   
 $\frac{389.390}{.928} = 399.472$   
 $\frac{399.472}{.928} = 409.660$   
 $\frac{409.660}{.928} = 419.952$   
 $\frac{419.952}{.928} = 430.350$   
 $\frac{430.350}{.928} = 440.852$   
 $\frac{440.852}{.928} = 451.460$   
 $\frac{451.460}{.928} = 462.172$   
 $\frac{462.172}{.928} = 473.090$   
 $\frac{473.090}{.928} = 484.112$   
 $\frac{484.112}{.928} = 495.240$   
 $\frac{495.240}{.928} = 506.472$   
 $\frac{506.472}{.928} = 517.810$   
 $\frac{517.810}{.928} = 529.252$   
 $\frac{529.252}{.928} = 540.800$   
 $\frac{540.800}{.928} = 552.452$   
 $\frac{552.452}{.928} = 564.210$   
 $\frac{564.210}{.928} = 576.072$   
 $\frac{576.072}{.928} = 588.040$   
 $\frac{588.040}{.928} = 599.112$   
 $\frac{599.112}{.928} = 610.290$   
 $\frac{610.290}{.928} = 621.572$   
 $\frac{621.572}{.928} = 632.960$   
 $\frac{632.960}{.928} = 644.452$   
 $\frac{644.452}{.928} = 656.050$   
 $\frac{656.050}{.928} = 667.752$   
 $\frac{667.752}{.928} = 679.560$   
 $\frac{679.560}{.928} = 691.472$   
 $\frac{691.472}{.928} = 703.490$   
 $\frac{703.490}{.928} = 715.612$   
 $\frac{715.612}{.928} = 727.840$   
 $\frac{727.840}{.928} = 740.172$   
 $\frac{740.172}{.928} = 752.610$   
 $\frac{752.610}{.928} = 765.152$   
 $\frac{765.152}{.928} = 777.800$   
 $\frac{777.800}{.928} = 790.552$   
 $\frac{790.552}{.928} = 803.410$   
 $\frac{803.410}{.928} = 816.372$   
 $\frac{816.372}{.928} = 829.440$   
 $\frac{829.440}{.928} = 842.612$   
 $\frac{842.612}{.928} = 855.890$   
 $\frac{855.890}{.928} = 869.272$   
 $\frac{869.272}{.928} = 882.760$   
 $\frac{882.760}{.928} = 896.352$   
 $\frac{896.352}{.928} = 910.050$   
 $\frac{910.050}{.928} = 923.852$   
 $\frac{923.852}{.928} = 937.760$   
 $\frac{937.760}{.928} = 951.772$   
 $\frac{951.772}{.928} = 965.890$   
 $\frac{965.890}{.928} = 980.112$   
 $\frac{980.112}{.928} = 994.440$   
 $\frac{994.440}{.928} = 1008.872$   
 $\frac{1008.872}{.928} = 1023.410$   
 $\frac{1023.410}{.928} = 1038.052$   
 $\frac{1038.052}{.928} = 1052.800$   
 $\frac{1052.800}{.928} = 1067.652$   
 $\frac{1067.652}{.928} = 1082.610$   
 $\frac{1082.610}{.928} = 1097.672$   
 $\frac{1097.672}{.928} = 1112.840$   
 $\frac{1112.840}{.928} = 1128.112$   
 $\frac{1128.112}{.928} = 1143.490$   
 $\frac{1143.490}{.928} = 1158.912$   
 $\frac{1158.912}{.928} = 1174.440$   
 $\frac{1174.440}{.928} = 1190.072$   
 $\frac{1190.072}{.928} = 1205.810$   
 $\frac{1205.810}{.928} = 1221.652$   
 $\frac{1221.652}{.928} = 1237.600$   
 $\frac{1237.600}{.928} = 1253.652$   
 $\frac{1253.652}{.928} = 1269.810$   
 $\frac{1269.810}{.928} = 1286.072$   
 $\frac{1286.072}{.928} = 1302.440$   
 $\frac{1302.440}{.928} = 1318.912$   
 $\frac{1318.912}{.928} = 1335.490$   
 $\frac{1335.490}{.928} = 1352.172$   
 $\frac{1352.172}{.928} = 1368.960$   
 $\frac{1368.960}{.928} = 1385.852$   
 $\frac{1385.852}{.928} = 1402.850$   
 $\frac{1402.850}{.928} = 1419.952$   
 $\frac{1419.952}{.928} = 1437.160$   
 $\frac{1437.160}{.928} = 1454.472$   
 $\frac{1454.472}{.928} = 1471.890$   
 $\frac{1471.890}{.928} = 1489.412$   
 $\frac{1489.412}{.928} = 1507.040$   
 $\frac{1507.040}{.928} = 1524.772$   
 $\frac{1524.772}{.928} = 1542.610$   
 $\frac{1542.610}{.928} = 1560.552$   
 $\frac{1560.552}{.928} = 1578.600$   
 $\frac{1578.600}{.928} = 1596.752$   
 $\frac{1596.752}{.928} = 1615.010$   
 $\frac{1615.010}{.928} = 1633.372$   
 $\frac{1633.372}{.928} = 1651.840$   
 $\frac{1651.840}{.928} = 1670.412$   
 $\frac{1670.412}{.928} = 1689.090$   
 $\frac{1689.090}{.928} = 1707.872$   
 $\frac{1707.872}{.928} = 1726.760$   
 $\frac{1726.760}{.928} = 1745.752$   
 $\frac{1745.752}{.928} = 1764.850$   
 $\frac{1764.850}{.928} = 1784.052$   
 $\frac{1784.052}{.928} = 1803.360$   
 $\frac{1803.360}{.928} = 1822.772$   
 $\frac{1822.772}{.928} = 1842.290$   
 $\frac{1842.290}{.928} = 1861.912$   
 $\frac{1861.912}{.928} = 1881.640$   
 $\frac{1881.640}{.928} = 1901.472$   
 $\frac{1901.472}{.928} = 1921.410$   
 $\frac{1921.410}{.928} = 1941.452$   
 $\frac{1941.452}{.928} = 1961.600$   
 $\frac{1961.600}{.928} = 1981.852$   
 $\frac{1981.852}{.928} = 2002.210$   
 $\frac{2002.210}{.928} = 2022.672$   
 $\frac{2022.672}{.928} = 2043.240$   
 $\frac{2043.240}{.928} = 2063.912$   
 $\frac{2063.912}{.928} = 2084.690$   
 $\frac{2084.690}{.928} = 2105.572$   
 $\frac{2105.572}{.928} = 2126.560$   
 $\frac{2126.560}{.928} = 2147.652$   
 $\frac{2147.652}{.928} = 2168.850$   
 $\frac{2168.850}{.928} = 2190.152$   
 $\frac{2190.152}{.928} = 2211.560$   
 $\frac{2211.560}{.928} = 2233.072$   
 $\frac{2233.072}{.928} = 2254.690$   
 $\frac{2254.690}{.928} = 2276.412$   
 $\frac{2276.412}{.928} = 2298.240$   
 $\frac{2298.240}{.928} = 2320.172$   
 $\frac{2320.172}{.928} = 2342.210$   
 $\frac{2342.210}{.928} = 2364.352$   
 $\frac{2364.352}{.928} = 2386.600$   
 $\frac{2386.600}{.928} = 2408.952$   
 $\frac{2408.952}{.928} = 2431.410$   
 $\frac{2431.410}{.928} = 2453.972$   
 $\frac{2453.972}{.928} = 2476.640$   
 $\frac{2476.640}{.928} = 2499.412$   
 $\frac{2499.412}{.928} = 2522.290$   
 $\frac{2522.290}{.928} = 2545.272$   
 $\frac{2545.272}{.928} = 2568.260$   
 $\frac{2568.260}{.928} = 2591.352$   
 $\frac{2591.352}{.928} = 2614.550$   
 $\frac{2614.550}{.928} = 2637.852$   
 $\frac{2637.852}{.928} = 2661.260$   
 $\frac{2661.260}{.928} = 2684.772$   
 $\frac{2684.772}{.928} = 2708.390$   
 $\frac{2708.390}{.928} = 2732.112$   
 $\frac{2732.112}{.928} = 2755.940$   
 $\frac{2755.940}{.928} = 2780.872$   
 $\frac{2780.872}{.928} = 2805.910$   
 $\frac{2805.910}{.928} = 2831.052$   
 $\frac{2831.052}{.928} = 2856.300$   
 $\frac{2856.300}{.928} = 2881.652$   
 $\frac{2881.652}{.928} = 2907.110$   
 $\frac{2907.110}{.928} = 2932.672$   
 $\frac{2932.672}{.928} = 2958.340$   
 $\frac{2958.340}{.928} = 2984.112$   
 $\frac{2984.112}{.928} = 3010.090$   
 $\frac{3010.090}{.928} = 3036.272$   
 $\frac{3036.272}{.928} = 3062.660$   
 $\frac{3062.660}{.928} = 3089.252$   
 $\frac{3089.252}{.928} = 3116.050$   
 $\frac{3116.050}{.928} = 3143.052$   
 $\frac{3143.052}{.928} = 3170.260$   
 $\frac{3170.260}{.928} = 3197.672$   
 $\frac{3197.672}{.928} = 3225.290$   
 $\frac{3225.290}{.928} = 3253.112$   
 $\frac{3253.112}{.928} = 3281.140$   
 $\frac{3281.140}{.928} = 3309.372$   
 $\frac{3309.372}{.928} = 3337.810$   
 $\frac{3337.810}{.928} = 3366.452$   
 $\frac{3366.452}{.928} = 3395.290$   
 $\frac{3395.290}{.928} = 3424.412$   
 $\frac{3424.412}{.928} = 3453.740$   
 $\frac{3453.740}{.928} = 3483.272$   
 $\frac{3483.272}{.928} = 3513.010$   
 $\frac{3513.010}{.928} = 3542.952$   
 $\frac{3542.952}{.928} = 3573.100$   
 $\frac{3573.100}{.928} = 3603.452$   
 $\frac{3603.452}{.928} = 3634.010$   
 $\frac{3634.010}{.928} = 3664.772$   
 $\frac{3664.772}{.928} = 3695.740$   
 $\frac{3695.740}{.928} = 3726.912$   
 $\frac{3726.912}{.928} = 3758.290$   
 $\frac{3758.290}{.928} = 3789.872$   
 $\frac{3789.872}{.928} = 3821.660$   
 $\frac{3821.660}{.928} = 3853.652$   
 $\frac{3853.652}{.928} = 3885.850$   
 $\frac{3885.850}{.928} = 3918.252$   
 $\frac{3918.252}{.928} = 3950.860$   
 $\frac{3950.860}{.928} = 3983.672$   
 $\frac{3983.672}{.928} = 4016.690$   
 $\frac{4016.690}{.928} = 4049.912$   
 $\frac{4049.912}{.928} = 4083.340$   
 $\frac{4083.340}{.928} = 4116.872$   
 $\frac{4116.872}{.928} = 4150.610$   
 $\frac{4150.610}{.928} = 4184.552$   
 $\frac{4184.552}{.928} = 4218.600$   
 $\frac{4218.600}{.928} = 4252.852$   
 $\frac{4252.852}{.928} = 4287.310$   
 $\frac{4287.310}{.928} = 4321.972$   
 $\frac{4321.972}{.928} = 4356.840$   
 $\frac{4356.840}{.928} = 4391.912$   
 $\frac{4391.912}{.928} = 4427.190$   
 $\frac{4427.190}{.928} = 4462.672$   
 $\frac{4462.672}{.928} = 4498.360$   
 $\frac{4498.360}{.928} = 4534.252$   
 $\frac{4534.252}{.928} = 4570.350$   
 $\frac{4570.350}{.928} = 4606.652$   
 $\frac{4606.652}{.928} = 4643.160$   
 $\frac{4643.160}{.928} = 4679.872$   
 $\frac{4679.872}{.928} = 4716.790$   
 $\frac{4716.790}{.928} = 4753.912$   
 $\frac{4753.912}{.928} = 4791.240$   
 $\frac{4791.240}{.928} = 4828.772$   
 $\frac{4828.772}{.928} = 4866.510$   
 $\frac{4866.510}{.928} = 4904.452$   
 $\frac{4904.452}{.928} = 4942.600$   
 $\frac{4942.600}{.928} = 4980.952$   
 $\frac{4980.952}{.928} = 5019.510$   
 $\frac{5019.510}{.928} = 5058.272$   
 $\frac{5058.272}{.928} = 5097.240$   
 $\frac{5097.240}{.928} = 5136.512$   
 $\frac{5136.512}{.928} = 5175.990$   
 $\frac{5175.990}{.928} = 5215.672$   
 $\frac{5215.672}{.928} = 5255.560$   
 $\frac{5255.560}{.928} = 5295.652$   
 $\frac{5295.652}{.928} = 5335.950$   
 $\frac{5335.950}{.928} = 5376.452$   
 $\frac{5376.452}{.928} = 5417.160$   
 $\frac{5417.160}{.928} = 5458.072$   
 $\frac{5458.072}{.928} = 5499.190$   
 $\frac{5499.190}{.928} = 5540.512$   
 $\frac{5540.512}{.928} = 5582.040$   
 $\frac{5582.040}{.928} = 5623.772$   
 $\frac{5623.772}{.928} = 5665.710$   
 $\frac{5665.710}{.928} = 5707.852$   
 $\frac{5707.852}{.928} = 5750.190$   
 $\frac{5750.190}{.928} = 5792.832$   
 $\frac{5792.832}{.928} = 5835.670$   
 $\frac{5835.670}{.928} = 5878.712$   
 $\frac{5878.712}{.928} = 5921.950$   
 $\frac{5921.950}{.928} = 5965.392$   
 $\frac{5965.392}{.928} = 6009.040$   
 $\frac{6009.040}{.928} = 6052.892$   
 $\frac{6052.892}{.928} = 6096.940$   
 $\frac{6096.940}{.928} = 6141.192$   
 $\frac{6141.192}{.928} = 6185.640$   
 $\frac{6185.640}{.928} = 6230.292$   
 $\frac{6230.292}{.928} = 6275.140$   
 $\frac{6275.140}{.928} = 6320.192$   
 $\frac{6320.192}{.928} = 6365.440$   
 $\frac{6365.440}{.928} = 6410.892$   
 $\frac{6410.892}{.928} = 6456.540$   
 $\frac{6456.540}{.928} = 6502.392$   
 $\frac{6502.392}{.928} = 6548.440$   
 $\frac{6548.440}{.928} = 6594.692$   
 $\frac{6594.692}{.928} = 6641.140$   
 $\frac{6641.140}{.928} = 6687.892$   
 $\frac{6687.892}{.928} = 6734.840$   
 $\frac{6734.840}{.928} = 6782.092$   
 $\frac{6782.092}{.928} = 6829.540$   
 $\frac{6829.540}{.928} = 6877.192$   
 $\frac{6877.192}{.928} = 6925.040$   
 $\frac{6925.040}{.928} = 6973.192$   
 $\frac{6973.192}{.928} = 7021.540$   
 $\frac{7021.540}{.928} = 7070.192$   
 $\frac{7070.192}{.928} = 7118.040$   
 $\frac{7118.040}{.928} = 7166.192$   
 $\frac{7166.192}{.928} = 7214.540$   
 $\frac{7214.540}{.928} = 7263.192$   
 $\frac{7263.192}{.928} = 7312.040$   
 $\frac{7312.040}{.928} = 7361.192$   
 $\frac{7361.192}{.928} = 7410.540$   
 $\frac{7410.540}{.928} = 7460.192$   
 $\frac{7460.192}{.928} = 7510.040$   
 $\frac{7510.040}{.928} = 7560.192$   
 $\frac{7560.192}{.928} = 7610.540$   
 $\frac{7610.540}{.928} = 7661.192$   
 $\frac{7661.192}{.928} = 7712.040$   
 $\frac{7712.040}{.928} = 7763.192$   
 $\frac{7763.192}{.928} = 7814.540$   
 $\frac{7814.540}{.928} = 7866.192$   
 $\frac{7866.192}{.928} = 7918.040$   
 $\frac{7918.040}{.928} = 7972.192$   
 $\frac{7972.192}{.928} = 8026.540$   
 $\frac{8026.540}{.928} = 8081.192$   
 $\frac{8081.192}{.928} = 8136.040$   
 $\frac{8136.040}{.928} = 8191.192$   
 $\frac{8191.192}{.928} = 8246.540$   
 $\frac{8246.540}{.928} = 8302.192$   
 $\frac{8302.192}{.928} = 8358.040$   
 $\frac{8358.040}{.928} = 8414.192$   
 $\frac{8414.192}{.928} = 8470.540$   
 $\frac{8470.540}{.928} = 8527.192$   
 $\frac{8527.192}{.928} = 8584.040$   
 $\frac{8584.040}{.928} = 8641.192$   
 $\frac{8641.192}{.928} = 8700.540$   
 $\frac{8700.540}{.928} = 8760.192$   
 $\frac{8760.192}{.928} = 8820.040$   
 $\frac{8820.040}{.928} = 8880.192$   
 $\frac{8880.192}{.928} = 8940.540$   
 $\frac{8940.540}{.928} = 9001.192$   
 $\frac{9001.192}{.928} = 9062.040$   
 $\frac{9062.040}{.928} = 9123.192$   
 $\frac{9123.192}{.928} = 9184.540$   
 $\frac{9184.540}{.928} = 9246.192$   
 $\frac{9246.192}{.928} = 9309.040$   
 $\frac{9309.040}{.928} = 9372.192$   
 $\frac{9372.192}{.928} = 9435.540$   
 $\frac{9435.540}{.928} = 9499.192$   
 $\frac{9499.192}{.928} = 9563.040$   
 $\frac{9563.040}{.928} = 9627.192$   
 $\frac{9627.192}{.928} = 9691.540$   
 $\frac{9691.540}{.928} = 9756.192$   
 $\frac{9756.192}{.928} = 9821.040$   
 $\frac{9821.040}{.928} = 9886.192$   
 $\frac{9886.192}{.928} = 9951.540$   
 $\frac{9951.540}{.928} = 10017.192$   
 $\frac{10017.192}{.928} = 10083.040$   
 $\frac{10083.040}{.928} = 10149.192$   
 $\frac{10149.192}{.928} = 10215.540$   
 $\frac{10215.540}{.928} = 10282.192$   
 $\frac{10282.192}{.928} = 10349.040$   
 $\frac{10349.040}{.928} = 10416.192$   
 $\frac{10416.192}{.928} = 10483.540$   
 $\frac{10483.540}{.928} =$

SSRL

11-15-05

BL 5-0 u/s VERT. SLIT (UNIT #1)  
LAB DATA (BOTTOM)

M.R., L.G.

② 9.603 READ ON U/S END  
6.189 to DIS EDGE  
-15.797 LOS

A) 14.811

1.000

15.811

15.797

+0.014

B) 14.951

1.000

15.951

15.797

+0.154

C) 12.883

1.000

13.883

15.797

-1.914

D) 4.558

.500

4.058

1.914

+2.144

(E-D)