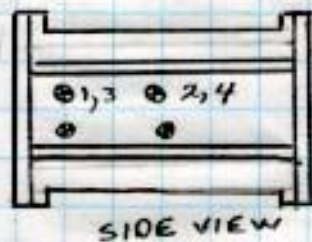


SSRL
BL 5 SLITS
S-1 & S-2

6/22/04
J.M., L.G.



BEAM

T/B's	S-1		
	X	Y	Z
1)	+ .008	0	—
2)	+ .008	+ .004	—
4)	—	+ .002	—
			+ .008

T/B's	S-2		
	X	Y	Z
1)	- .001	- .002	—
2)	- .004	0	—
4)	—	- .001	—
			- .012

⊗
-0.75M
-29.528"

SSRL
B/L 5 SLITS
S-1 & S-2

6/21/03
J.M., L.G

-015 +

S-1

1) 29.528
 4.548

 24.980
 1. ———

 23.980 S/R
 23.988

 +.008

2) 29.528
 4.548 T/B VALUE

 24.980
 1. ———

 23.980 S/R
 23.978

 +.008

S-2 4° YAW

1) 29.528
 4.548

 24.980
 (+) 8.512

 33.492
 (-) .220 YAW

 33.272
 1. ———

 32.272 S/R
 32.271

 -001

2) 29.528
 4.548

 24.980
 (+) 8.512 OFFSET FROM WIGGER LINE

 33.492
 1. ———

 32.492 S/R
 32.488

 -004

B/LS EXIT SLITS
S-1 & S-2

6/21/04
J.M.C., L.G.

(Y)

(LOCKERS)

HRLS040

HBL6530

574.69273

574.74047 ELEVATION

575.7911

575.7911 BEAM ELEVATION

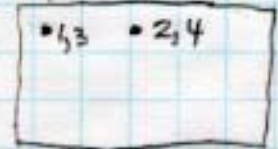
-1.09837M

-1.05063

-43.243"

-41.363"

3.150"
| 80M |



6.802

4.935

57.750

57.750

64.552

62.685

-43.243

-41.363

21.309 HI

21.322 CHECK LOGGING SHOT

S-1 SLIT Pitch - 1.55° #1 SIN 1.55° X 3.15" = .085"

NOTCH
7/8

1) 21.309
8.614
12.695
1.181
11.514
w. .085 Pitch
11.429
1. — T/B
10.429 S/R
10.429
0

2) 21.309
8.614
12.695
1.181
11.514
1. —
10.514 S/R
10.510
+0.004

4) 21.309
8.614 SLIT ABOVE B/L
12.695
1.181 T/B'S ABOVE SLIT &
11.514
1. —
10.514 S/R
10.512
+0.002

S-2 SLIT Pitch - 1.00° #1 SIN 1° X 3.15" = .055"

1) 21.309
10.983
10.326
1.181
9.145
(+) .055 Pitch
9.090
1. —
8.090 S/R
8.092 -0.002

2) 21.309
10.983
10.326
1.181
9.145
1. —
8.145 S/R
8.145
0

4) 21.309
10.983
10.326
1.181
9.145
1. —
8.145 S/R
8.146
-0.001

SSRL
 B/L 5 SLITS
 5-1 & 5-2

6/21/03
 J.M., L.G.

② 24M
 944.882"

(24.3544M) T/B2
5-2

1) 944.882
 958.832

 13.950
 3.150

 10.800
 -1.-----

 9.8005/R
 9.778

 -012
 32

(25.0608) T/B2
5-1

1) 944.882
 986.646

 41.764
 3.150 T/B1 w/s of T/B2

 38.614
 1.-----

 37.6145/R
 -1.032

 37.582
 37.590

 +008

046
 -032
 USED BOTTOM BALL PITCH



6/21/04
J.M., LG

B/L S
SSRL

Y T/B's 30mm =
1.181"
X surface $7.095/2 =$
3.548
+ 1.000 FOR T/B

4.548" T/B VALUE
→ X"