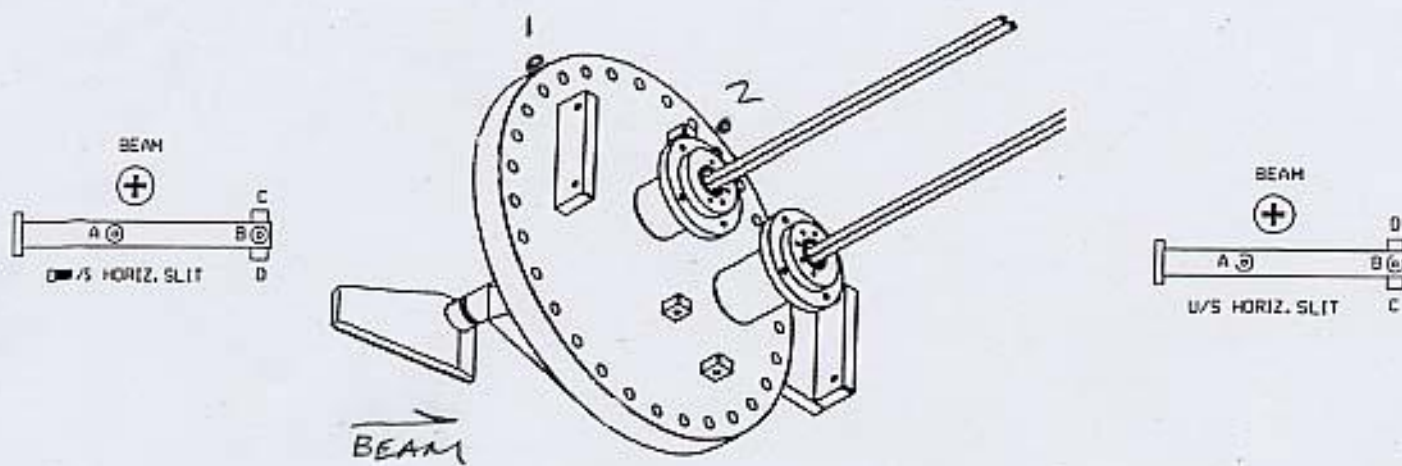


SSRL B/L 5-0 HORIZONTAL SLITS

12-05



FLANGE ASSY.

Y.

1	+2.029
2	+5.322

to SET PITCH

W/S SLIT

	X	Y	Z
A	-18.907	+1.316	+1.908
B	-25.400	+1.316	+1.869
C	-25.393	-.739	-.119
D	-25.395	+3.319	-.163

O/S SLIT

	X	Y	Z
A	-18.447	+1.157	-2.248
B	-24.938	+2.252	-2.337
C	-24.937	+2.299	-.317
D	-25.001	-1.759	-.312

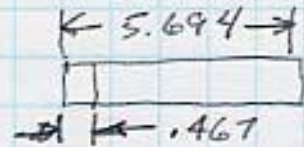
*USED LONG ARM

SSRL
 BL5-0 HORIZ. SLITS
 D/S

11-16-05
 J.M., L.G.

check
 JF

LAB DATA



(X) 6.488 BULK IN ON FLANGIE FACE
 6.438 TO BL
 +.050 LOS

5.694
 1.467 SIN
 5.227 x 12° =
 ΔX = 1.087

+0.050 to D/S APERTURE
 1.087 to U/S EDGE

1.1375/R
 1.140

-0.003

∠ = 12.036°

+0.050 LOS
 97.000 REF.

46.950 = B/L

1.000 BULK IN

-45.950 LOS

A) 26.503
 1.000

27.503
 45.950

-18.447

B) 20.012
 1.000

21.012
 45.950

-24.938

C) 20.013
 1.000

21.013
 45.950

-24.937

D) 19.949
 1.000

20.949
 45.950

-25.001

* LONG ARM

SSRL
BL5-0 HORIZ. SLITS
D/S
LAB DATA

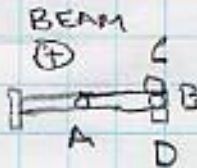
11.15-05
J.M., L.G.

check
sum

(Y) 7.779 READ
6.625 RADIUS
+ 14.404 HZ

SLIT
u/s) 14.404 d/s) 13.773 5/2
 .631 1/2 Boon 13.775
- 13.773 5/2 - 002
- 13.775
- 002

SLIT



A) 13.247 1.000 - 14.247 14.404 + .157	B) 13.152 1.000 - 14.152 14.404 + .252	C) 11.105 1.000 - 12.105 14.404 + 2.299	D) 4.558 (C-D) 1500 T/B's - 4.058 2.299 VAL'C' - 1.759
--	--	---	--

FLANGE (FOR PITCH)

1) 11.378 1.000 - 12.378 14.404 + 2.024	2) 8.094 1.000 - 9.094 14.404 + 5.310
---	---

NEW VALUES FLANGE
11-21-05

SSRL

BL5-0 HORIZ. SLITS

11-16-05

J.M., L.G.

D/S

check

LAB DATA

5.227 x cos 12° =

5.113"

(Z)

18.948 u/s END OF

5.113 to D/S APERTURE

-24.061 LOS

FLANGE u/s END

13.455

A) 13.256
8.557

21.813

24.061

-2.248

B) 13.167
8.557

21.724

24.061

-2.337

C) 15.187
8.557

23.744

24.061

-.317

D) 22.749
1.000

23.749

24.061

-.312

SSRL
BL 5-0 HORIZ SLITS
SETTING TO TANK CLEAN ROOM

12-5-05
J.M., L.G.

Ⓚ 16.797 HI

Check
JM

D/S SLIT

A) 16.797
+ .157

16.640

1.000

15.640 s/R

15.637

+003

B) 16.797

+ .252

16.545

1.000

15.545 s/R

15.544

+001

Ⓚ -32.447 LOS

HARD STOPS

A) 32.447

18.447

14.000

1.000

13.000 s/R

13.000

∅

IN

13.000

.360

13.360 s/R

Set

OUT

13.000

.410

12.590 s/R

Set

Check
IM

SSRL
BL 5-0 HORIZ. SLITS

12-5-05
J.M., L.G.

(Z) - LOS

D/S SLIT

YAW

PITCH

A) - 2.248 B) - 2.337 C) - .317 D) - .312

$\Delta = .089$ "A" LARGER

$\Delta = .005$ "D" LARGER

12.528

10.877

31.725	31.634	35.282	35.286
12.528	12.528	10.877	10.877
44.253	44.162	46.159	46.163
(-) 2.248	(-) 2.337	(-) .317	(-) .312
46.501	46.499	46.476	46.475

$\Delta = .002$ $\Delta = .001$

33.649

SSRL

11-21-05

BL 5-0 SLITS $\frac{1}{2}$ M.M.
SETTING PITCH ON HORIZ. SLITS

J.M., L.G.

(Y) 16.790 Hz

HORIZ. SLITS

1) 16.790
2.026

2) 16.790
5.310

14.764

11.480

1. —

1. —

13.764 s/r

10.480 s/r

13.761

10.468

+0.003

+0.012

13.761

10.468

1.000

1.000

14.761

11.468

16.790 Hz

16.790

+2.029

+5.322

NEW VALUES

SSRL

check
on

BLS-0 HORIZ. SLITS u/s

11-16-05
J.M., L.G.

LAB DATA

* LONG ARM

(X)

46.950 = BL

- 050 to P/S APERTURE

46.900

- .050 COS

(+) .952 ΔX TO u/s END

1.002 S/R on u/s END

1.007

+ .005

$\Delta X = .957 / 4.577 = .209$
 $\sin^{-1} .209 = 12.069^\circ$

46.950

1.000 Buck IN

-45.950 COS

A) 26.043

1.000

27.043

-45.950

-18.907

B) 19.550

1.000

20.550

-45.950

-25.400

C) 19.557

1.000

20.557

-45.950

-25.393

D) 19.555

1.000

20.555

-45.950

-25.395

SSRL

11-16-05
J.M., L.G.

BL 5-0 HORIZ. SLITS

check

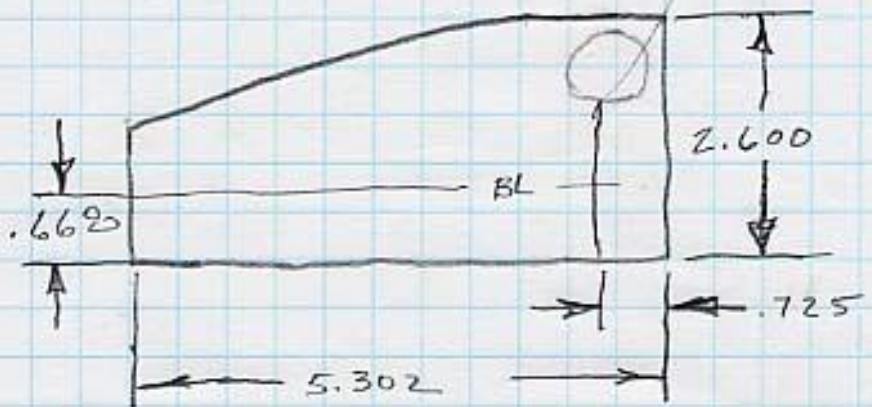
u/s
LAB DATA

(4)

+14.404 HI

2.600
.668

1.932



TOP OF SLIT

u/s) 14.404 d/s) 12.472^{5/2}
1.932 12.474

12.472^{5/2}
12.474

-002

-002

5.302

.725

4.577 x sin 12° =

Δx = .952"

A) 12.088
1.000

13.088
14.404

+1.316

B) 12.088
1.000

13.088
14.404

+1.316

C) 4.558
1.500

4.058
3.319

-.739

D) 10.085
1.000

11.085
14.404

+3.319

check
fm

SSRL

BL 5-0 HORIZ. SLITS u/s

11-16-05
J.M., L.G.

LAB DATA

(7)

$$\begin{array}{r}
 15.728 \text{ READ ON u/s END OF SLIT} \\
 4.477 \text{ 4.577} \times \cos 12^\circ \text{ TO APERTURE} \\
 \hline
 - 20.205 \text{ LOS}
 \end{array}$$

FLANGE
13.453

A)

$$\begin{array}{r}
 11.236 \\
 10.877 \\
 \hline
 22.113 \\
 - 20.205 \\
 \hline
 \boxed{+1.908}
 \end{array}$$

B)

$$\begin{array}{r}
 15.174 \\
 6.900 \\
 \hline
 22.074 \\
 - 20.205 \\
 \hline
 \boxed{+1.869}
 \end{array}$$

C)

$$\begin{array}{r}
 19.086 \\
 1.000 \\
 \hline
 20.086 \\
 - 20.205 \\
 \hline
 \boxed{-.119}
 \end{array}$$

D)

$$\begin{array}{r}
 19.042 \\
 1.000 \\
 \hline
 20.042 \\
 - 20.205 \\
 \hline
 \boxed{-.163}
 \end{array}$$

SSRL

12-5-05
J.M., L.G.

BL 5-0 HORIZ. SLITS
SETTING TO TANK CLEAN ROOM

check
Jim

(X) SLIT TANK FOR BUCKIN

B) + 2.002	10.000 REF.
A) + .053	+ 22.449 LOS
19.000 + 1	<hr/>
21.016 + 1	32.449 = ϕ
20.000 + 1	64.896 BUCK IN
21.866 + 1	<hr/>
20.447 - 1	- 32.447 LOS
22.396 - 1	
+ 22.449 LOS	

4/S HORIZ. SLIT

A) - 32.447
18.907
<hr/>
13.540
1.000
<hr/>
12.540 s/r
12.540
<hr/>
ϕ

LIMITS

OUT

12.540
- 1.410 TO HARDSTOP
<hr/>
12.950 s/r

IN

12.540
- 1.210 to HARDSTOP
<hr/>
12.330 s/r set

SSRL

BL 5-0 HORIZ. SLITS
SETTING TO TANK CLEAR ROOM

12-5-05
J.M., L.G.

(Z) - LOS

check
sum

u/s HORIZ.

YAW

PITCH

A) +1.908

B) +1.869

C) -.119

D) -.163

$\Delta = .039$ " "A" LARGER READ
10.877 ft

$\Delta = .044$ " "C" LARGER READ
12.528 ft

33.656
10.877

33.611
10.877

29.992
12.528

29.940
12.528

44.533
1.908

44.488
1.869

42.510
-.119

42.468
-.163

42.625

42.619

42.629

42.631

$\Delta = .004$

$\Delta = .006$

SSRL
BL 5-0 HORIZ. SLITS
SETTING TO TANK CLEAN ROOM

12-5-05
J.M., L.G.

Y

SLIT TANK

check
M

A) 3.964

B) 6.506

C) 6.533

11.832

9.290

9.265

1.000

1.000

1.000

12.832

10.290

10.265

3.964

6.506

6.533

16.796

16.796

16.798

M = 16.797 Hz

u/s HORIZ. SLIT

A) 16.797

B) 16.797

1.316

1.316

15.481

15.481

1.000

1.000

14.481 s/r

14.481 s/r

14.476

14.476

+ .005

+ .005