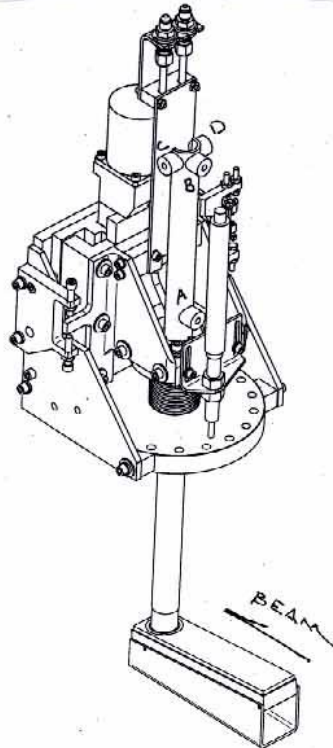


BL4-3 TOP VERTICAL SLIT

LONG
ARM

	X	Y	Z
A	+ .054	+21.738	-1.650
B	+ .078	+28.236	-1.726
C	+ 2.124	+28.258	+ .277
D	-1.935	+28.273	+ .307

LAB DATA

	X	Y	Z
A	+ 3.270	+ 21.738	+ 535.938
B	+ 3.294	+ 28.236	+ 535.862
C	+ 5.352	+ 28.258	+ 537.852
D	+ 1.293	+ 28.273	+ 537.907

FIELD NUMBERS

$$\begin{aligned} \text{YAW} &= +.006 \text{ RAD.} \\ X &= +3.226'' \\ Z &= +537.588'' \end{aligned}$$

SSRL
BL 4-3 TOP SLIT.

6-18-07
J.M., L.G.

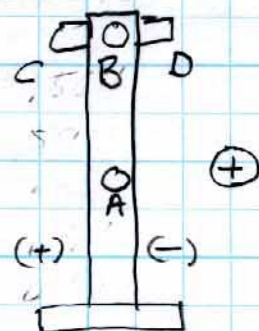
(Y)

$$7.050 - .080 - 1.183 = 5.787 \quad 1.068 \times \sin 4.5 = .084''$$

$$\sin 5.7^\circ \times 5.787 = .575 - .084 = .491 \Delta$$

$$\begin{array}{r} .491 \Delta \\ .162 \\ \hline .553 \approx 1/2 \\ .551 \\ \hline \boxed{-002} \end{array}$$

$$\theta = 5.68^\circ$$



LONG
ARM

-.062 HI
5.867 REF. BLADE

$$\begin{array}{r} 5.929 \\ 30.692 \\ \hline \end{array}$$

24.763 HI

$$\begin{array}{r} A) 2.025 \\ 1.000 \\ \hline 3.025 \end{array}$$

$$\begin{array}{r} 24.763 \\ \hline \end{array}$$

$$\boxed{+21.738}$$

$$\begin{array}{r} B) 2.473 \\ 1.000 \\ \hline 3.473 \end{array}$$

$$\begin{array}{r} 24.763 \\ \hline \end{array}$$

$$\boxed{+28.236}$$

$$\begin{array}{r} C) 2.495 \\ 1.000 \\ \hline 3.495 \end{array}$$

$$\begin{array}{r} 24.763 \\ \hline \end{array}$$

$$\boxed{+28.258}$$

$$\begin{array}{r} D) 2.510 \\ 1.000 \\ \hline 3.510 \end{array}$$

$$\begin{array}{r} 24.763 \\ \hline \end{array}$$

$$\boxed{+28.273}$$

SSRL
BL 4-3 TOP SLIT

6-18-07
J.M., L.G.

(X)

41s), 850 1/2 body
01s), 850

30.000

30.228

34.500

34.455

33.758

33.758

- 34.608 LOS

A) 33.662

1.000

34.662

34.608

+ .054

B) 33.686

1.000

34.686

34.608

+ .078

C) 4.559

.500

4.059

1.935

+ 2.124

D) 31.673

1.000

32.673

34.608

- 1.935

(Z)

7.493 41s END OF SLIT

5.767 to APERTURE

- 13.260 LOS

A) 10.610

1.000

11.610

13.260

- 1.650

B) 10.534

1.000

11.534

13.260

- 1.726

C) 12.537

1.000

13.537

13.260

+ .277

D) 12.567

1.000

13.567

13.260

+ .307

FIELD #'S

Job Description:

Report Units: inches, radians

Job File: C:\Documents and Settings\levirt\My Documents\BL4-3TOPSLIT2007.SMX

Job Date: Wednesday, June 27, 2007 08:03:36 AM

Report Frame: PART

@STATION01

PART	0.000	0.000	0.000
APERTURE	3.226	0.000	537.588
A	3.270	21.738	535.938
B	3.294	28.236	535.862
C	5.352	28.258	537.852
D	1.293	28.273	537.907

X Y Z

YAW +.006 RAD

X + 3.226"

Z + 537.588"

Report Date: Wednesday, June 27, 2007 08:12:58 AM

FARO Insight 5.0.4

Page 1

Alignment:

Alignment crew: _____, _____, _____

Dimensions in { } are absolute dimensions.

Reference point (P) / edge (E) / axis (A) / surface (S):

Based on drawings SA-451-070-82 and -88

Mark slits accordingly to their beam- and branch-line.

x	3.226"	center of occluding edge (aperture)
z	537.588"	occluding edge (aperture)
y		adjustable, occluding edge (aperture)
roll	0.000	aperture (occluding edge)
pitch	5.700deg	us edge to aperture
yaw:	+0.006rad	side surface

Tolerance for installation:

x:	+/- 0.010"	measured: _____
y:		adjustable _____
z:	+/- 0.040"	measured: _____
roll:	+/- 0.001 rad	measured: _____
pitch:	+/- 0.002 rad	measured: _____
yaw:	+/- 0.003 rad	measured: _____
stage position, scribed and		measured: _____