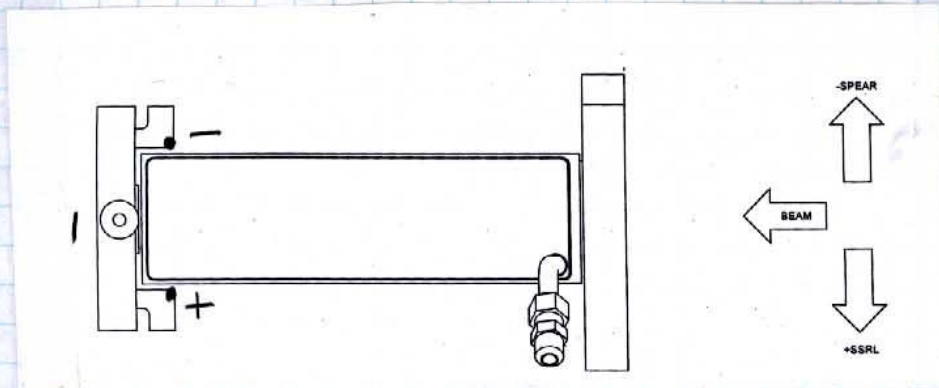


SSRL

2-19-08

BL 4-3 PIVOT MASK

J.M., L.G.



LAB DATA

	X	Y	Z
T/B 1	-1.001	+3.798	+854
u/s TOP OF FL.	∅	2.981	-9.184
u/s (+) SIDE OF FL.	2.978	∅	-9.184

Roll Y

u/s INNER CORNERS OF TRUNIONS

+).254 -).245

FIELD DATA

SSRL

BL4-3 PIVOT MASK

Job Description:

Report Units: inches, radians

Job File: C:\Documents and Settings\levirt\My Documents\My Documents\SSRL 2008\BL4-3

Job Date: Thursday, February 21, 2008 02:44:31 PM

Report Frame: PART

TB1	3.926	2.798	654.584
TOP OF FL	3.867	1.981	644.546
SIDE OF FL	6.845	-1.000	644.528
M	3.922	-1.000	653.730

X Y Z

TRUNIONS Y's

+1) -.746 -) -.755

YAWED .006 RAD

TRANSLATED

X = 3.922"

Y = -1.000"

Z = 653.730

Report Date: Friday, March 07, 2008 10:23:22 AM

FARO Insight 5.0.5

(X) Buck IN ON Body

2.520 = Body width
 $\frac{1}{2} = 1.260$

F = 1.260
N = 1.260

W/S FLG

T/B 1

F 26.473
W 26.278
F 28.500
N 28.166

24.889 LOS
2.985
21.904 S/R
21.911 READ

24.889 LOS
23.890
.999
1. —

-.007

-.001

F/W
S/R 23.629

LOS 24.889 ✓

24.889 LOS
21.911 READ

2.978

(Z) = 9.184 W/S FLG FACE

T/B 1

8.840 READ
9.184

18.024 LOS

17.878
1. —

18.878

18.024

+.854

W/S (SCRIBE +1" FROM D/S FACE OF FLANGE)

.838 FL. D/S FACE

1.000

1.838

- 9.184

-7.346

SSRL
BL 4-3 PIVOT MASK

1-30-08
LG JM

①

START
+ .005 to Bot of aperture

12.636
12.641 = TOP
12.957 Bot
.316 GAP

12.814 ϕ
18.117 BLADE REF
5.303 HI ✓

u/s FLG

5.303
2.985 = FLG
2.318 SR ✓
2.322
- .004 ✓

5.303 HI
2.322 READ

2.981

u/s Enter Corn Support Bruck
(Roll)

+ Support Bruck

- side

5.049 Read
5.303 HI

5.058 Read
5.303 HI

+ .254 ✓

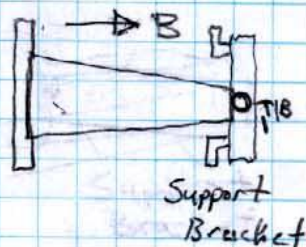
+ .245 ✓

FINISH

+ .010 top
12.961 REF
12.971
.157 1/2 APP
12.814 ϕ ✓

u/s

5.270 FLG / 2.985
u/s
2.494 opening
1.247



T/B 1

.505
5.303
4.798
1. —
+3.798 ✓

Alignment:

Alignment crew: _____, _____, _____

Dimensions in { } are absolute dimensions.

Reference point (P) / edge (E) / axis (A) / surface (S):

x:	{+3.922"}	center of aperture of the pivot mask body
y:	see. comment	center of aperture of the pivot mask body
z:	{653.730"}	aperture of the pivot mask body
roll:	{0.000}	aperture bottom edge
pitch:	{0.000}	upstream and downstream flange center
yaw:	{+0.006 rad}	side wall of the mask body

Items to fiducialize:

Entrance aperture of pivot mask body, SSRL side edge and bottom edge:

x(ssrl):	measured:	_____
y(bottom):	measured:	_____
z:	measured:	_____
x(ct):	measured:	_____
y(ct):	measured:	_____
z(us):	measured:	_____

Tolerance at installation:

Alignment crew: _____, _____, _____

Comment:

To align the Pivot Mask: the Breakout as well as the Girder (and preferably the Vert Slit Tank) alignment need to be complete. Next the downstream pivot support will be aligned to be on the same center line as the girder. The girder is then moved (by motor control or by hand) to align the y-locations of the upstream and the downstream pivot points -1.000" [-25.400mm]. The final alignment of the mask will take place in this orientation. To finish this step the girder will need to move into its extreme positions to verify the required motion.

x:	+/- 0.010"	measured:	_____
y:	+/- 0.005"	measured:	_____
z:	+/- 0.050"	measured:	_____
roll:	+/- 0.000 rad	measured:	_____
pitch:	+/- 0.001 rad	measured:	_____
yaw:	+/- 0.001 rad	measured:	_____