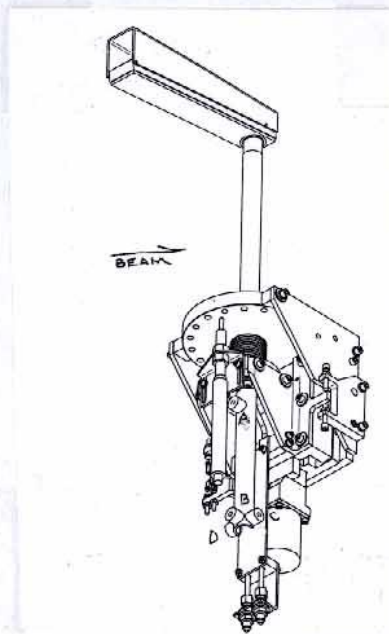


BL 4-3 BOTTOM VERTICAL SLIT

LONG
ARM

	X	Y	Z
A	0	-24.171	-1.609
B	+ .026	-30.670	-1.660
C	-2.018	-30.676	+ .346
D	+2.041	-30.684	+ .376

LAB DATA

	X	Y	Z
A	+ 3.288	-24.171	+547.979
B	+3.314	-30.670	+547.928
C	+1.282	-30.676	+549.946
D	+5.341	-30.684	+549.952

FIELD NUMBERS

YAW = +.006 RAD

X = +3.298"

Z = +549.588"

SSRL
BL 4-3 BOTTOM SLIT

6-19-07
J.M., L.G.

(X) U(S) .850 1/2 BODY
D(S) .850 " "
30.000
30.115
35.000
34.682
31.328
31.328
+ 32.178 LOS

			(C-D)	
A) 31.178	B) 31.152	C) 24.559	D) 29.137	
1.000	1.000	1.500	1.000	
✓ <u>32.178</u>	✓ <u>32.152</u>	✓ <u>4.059</u>	✓ <u>30.137</u>	
32.178	32.178	2.041	32.178	
✓ 0	✓ +0.026	✓ -2.018	✓ +2.041	

(Z) 8.225 READ W/S END
9.101 TO APERTURE
-17.326 LOS

A) 14.717	B) 14.666	C) 16.672	D) 16.702
1.000	1.000	1.000	1.000
✓ <u>15.717</u>	✓ <u>15.666</u>	✓ <u>17.672</u>	✓ <u>17.702</u>
17.326	17.326	17.326	17.326
✓ -1.609	✓ -1.660	✓ +1.346	✓ +1.376

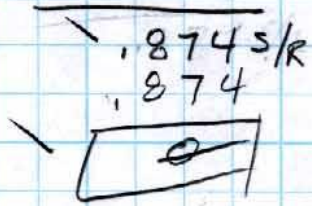
SSRL
BL 4-3 BOTTOM SLIT

6-19-07
J.M., L.G.

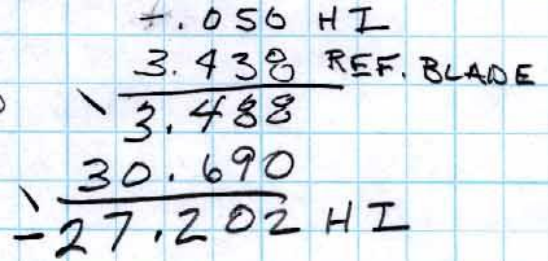
(Y)

AY = .829 PRINT FROM ARMIN

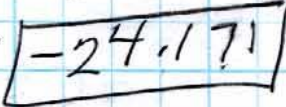
(A) .050 to APER.



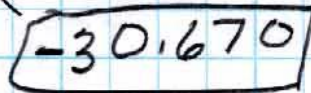
5.7°



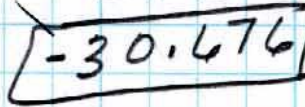
A) 2.031
1.000
+3.031
27.202



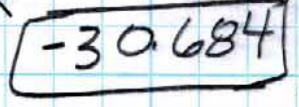
B) 2.468
1.000
-3.468
27.202



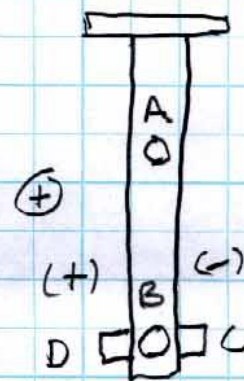
C) 2.474
1.000
-3.474
27.202



D) 2.482
1.000
-3.482
27.202



LONG ARM



Job Description:

Report Units: inches, radians

Job File: C:\Documents and Settings\levirt\My Documents\BL4-3BOTTOMSLIT2007.SMX

Job Date: Wednesday, June 27, 2007 08:20:35 AM

Report Frame: PART

Name	X	Y	Z
@STATION01			
PART	0.000	0.000	0.000
	0.000	0.000	0.000
APERTURE	3.298	0.000	549.588
A	3.288	-24.171	547.979
B	3.314	-30.670	547.928
C	1.282	-30.676	549.946
D	5.341	-30.684	549.952

YAWED +.006 RAD

X = +3.298"

Z = +549.588"

Report Date: Wednesday, June 27, 2007 08:42:47 AM

Alignment:

Alignment crew: _____, _____, _____

Dimensions in { } are absolute dimensions.

Reference point (P) / edge (E) / axis (A) / surface (S):

Based on drawings SA-451-070-83 and -89

Mark slits accordingly to their beam- and branch-line.

x	3.298"	center of occluding edge (aperture)
z	549.588"	occluding edge (aperture)
y		adjustable, occluding edge (aperture)
roll	0.000	aperture (occluding edge)
pitch	5.700deg	us edge to aperture
yaw:	+0.006rad	side surface

Tolerance for installation:

x:	+/- 0.010"	measured: _____
y:		adjustable _____
z:	+/- 0.040"	measured: _____
roll:	+/- 0.001 rad	measured: _____
pitch:	+/- 0.002 rad	measured: _____
yaw:	+/- 0.003 rad	measured: _____
stage position, scribed and		measured: _____