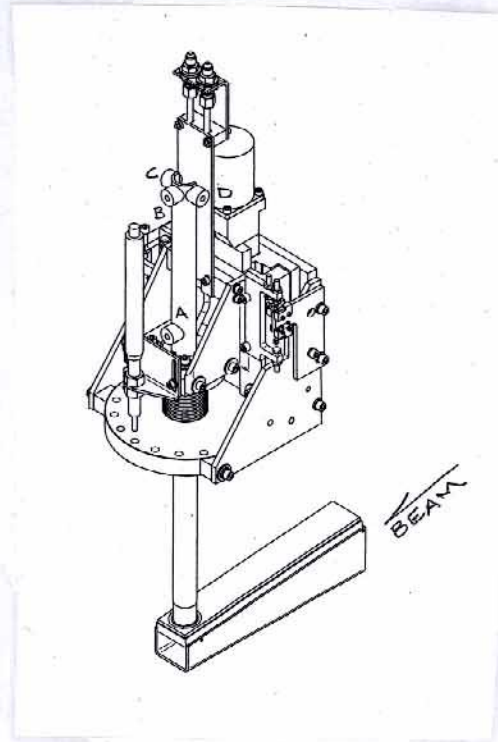


SSRL

6/07

## BL4-Z TOP VERTICAL SLIT



	X	Y	Z
A	+ .068	+22.061	528.004
B	+ .082	+28.564	528.057
C	- 1.992	+28.582	526.067
D	+2.067	+28.582	526.012

SSRL  
BL 4-2 TOP SLIT

6-19-07  
J.M., L.G.

Y

check

$$\begin{array}{r} .824 = \Delta Y \\ (+).086 \\ \hline +.910 \text{ SR} \\ .910 \\ \hline \boxed{0} \end{array}$$

$$\begin{array}{r} (-).086 \text{ HI} \\ \hline 5.520 \text{ REF.} \\ \hline 5.606 = \Phi \\ 30.690 \\ \hline +25.084 \text{ HI} \end{array}$$

$$\begin{array}{r} \text{A) } 2.023 \\ \hline 1.000 \\ \hline -3.023 \\ 25.084 \end{array}$$

$$\boxed{+22.061}$$

$$\begin{array}{r} \text{B) } 2.480 \\ \hline 1.000 \\ \hline +3.480 \\ 25.084 \end{array}$$

$$\boxed{+28.564}$$

$$\begin{array}{r} \text{C) } 2.498 \\ \hline 1.000 \\ \hline +3.498 \\ 25.084 \end{array}$$

$$\boxed{+28.582}$$

$$\begin{array}{r} \text{D) } 2.498 \\ \hline 1.000 \\ \hline +3.498 \\ 25.084 \end{array}$$

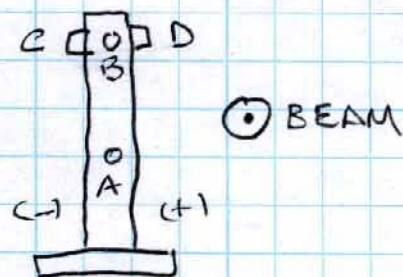
$$\boxed{+28.582}$$

SSRL  
BL 4-2 TOP SCIT

6-19-07  
J.M., L.G.

(X) 4/s, 850 1/2 body  
D/S, 850 " "

(hook)



30.000  
31.126  
35.000  
34.689  
31.442  
31.442  
- 32.292 LOS

A) 31.360 1.000 32.360 32.292 <u>+1.068</u>	B) 31.374 1.000 32.374 32.292 <u>+1.082</u>	C) 29.300 1.000 30.300 32.292 <u>+1.992</u>	D) 4.559 (c-d) .500 4.059 1.992 <u>+2.067</u>
---	---	---	---

(Z)  $1.183 \cos 5.7^\circ = 1.177$  to D/S END

12.459 READ O/S  
- 1.177 to Aperture  
+13.636 LOS

A) 10.220 1.000 11.220 13.636 <u>+2.416</u> 525.588 <u>528.004</u>	B) 10.167 1.000 11.167 13.636 <u>+2.469</u> 525.588 <u>528.057</u>	C) 12.157 1.000 13.157 13.636 <u>+4.79</u> 525.588 <u>526.067</u>	D) 12.212 1.000 13.212 13.636 <u>+4.24</u> 525.588 <u>526.012</u>
--	--	---	---

**Alignment:**

Alignment crew: \_\_\_\_\_, \_\_\_\_\_, \_\_\_\_\_

Dimensions in { } are absolute dimensions.

Reference point (P) / edge (E) / axis (A) / surface (S):

Based on drawings SA-451-070-81 and -87

Mark slits accordingly to their beam- and branch-line.

x	0.000"	center of occluding edge (aperture )
z	525.588"	occluding edge (aperture )
y		adjustable, occluding edge (aperture )
roll	0.000	aperture (occluding edge)
pitch	5.700deg	us edge to aperture
yaw:	+0.000rad	side surface

Tolerance for installation:

x:	+/- 0.005"	measured: _____
y:		adjustable _____
z:	+/- 0.040"	measured: _____
roll:	+/- 0.001 rad	measured: _____
pitch:	+/- 0.002 rad	measured: _____
yaw:	+/- 0.002 rad	measured: _____
stage position, scribed and		measured: _____