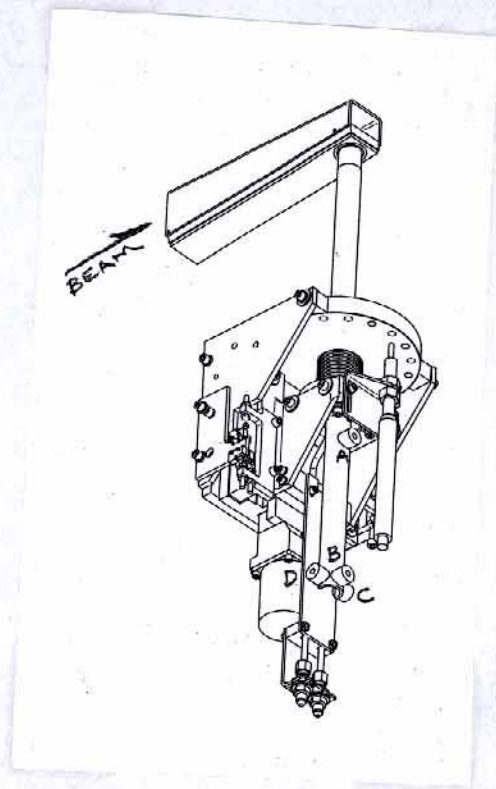


SSRL
BL4-2 BOTTOM VERTICAL SLIT 6107



	X	Y	Z
A	- .082	-23.860	516.003
B	- .128	-30.360	516.052
C	+1.916	-30.390	514.014
D	-2.143	-30.368	514.048

SSRL
BL 4.2 BOTTOM SLIT
LONG ARM

6-20-07
J.M., L.G.

(Y)

$$\begin{array}{r}
 .491 \Delta Y + 0.55 \\
 + .056 \\
 \hline
 .547 \text{ s/r} \\
 .548 \\
 \hline
 \boxed{+0.001}
 \end{array}
 \quad \chi = 5.704^\circ$$

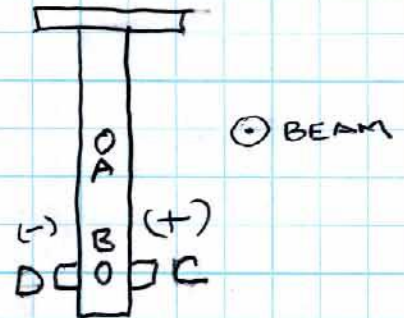
$$\begin{array}{r}
 (-).056 \\
 3.744 \text{ REF.} \\
 \hline
 3.800 = \text{BL} \\
 30.690 \\
 \hline
 -26.890 \text{ HI}
 \end{array}$$

A)
$$\begin{array}{r}
 2.030 \\
 1.000 \\
 \hline
 +3.030 \\
 -26.890 \\
 \hline
 \boxed{-23.860}
 \end{array}$$

B)
$$\begin{array}{r}
 2.470 \\
 1.000 \\
 \hline
 -3.470 \\
 -26.890 \\
 \hline
 \boxed{-30.360}
 \end{array}$$

C)
$$\begin{array}{r}
 2.500 \\
 1.000 \\
 \hline
 -3.500 \\
 -26.890 \\
 \hline
 \boxed{-30.390}
 \end{array}$$

D)
$$\begin{array}{r}
 2.478 \\
 1.000 \\
 \hline
 -3.478 \\
 -26.890 \\
 \hline
 \boxed{-30.368}
 \end{array}$$



SSRL
BL 4-2 BOTTOM SLIT
LONG ARM

6-20-07
J.M., L.G.

(X) u/s) .850 1/2 BODY
D/s) .850 " "
30.000
30.000

+ 30.850 LOS

A) 29.932 1.000 30.932 30.850 - .082	B) 29.978 1.000 30.978 30.850 - .128	C) 27.934 1.000 28.934 30.850 + 1.916	D) 4.559 (c-d) 1.500 4.059 1.916 - 2.143
---	---	--	---

(Z) 11.348 READ D/S
- 1.177 to APERTURE
+ 12.525 LOS

A) 9.110 1.000 10.110 12.525 + 2.415 513.588 516.003	B) 9.061 1.000 10.061 12.525 + 2.464 513.588 516.052	C) 11.099 1.000 12.099 12.525 + 426 513.588 514.014	D) 11.065 1.000 12.065 12.525 + 460 513.588 514.048
--	--	---	---

Alignment:

Alignment crew: _____, _____, _____

Dimensions in { } are absolute dimensions.

Reference point (P) / edge (E) / axis (A) / surface (S):

Based on drawings SA-451-070-80 and -86

Mark slits accordingly to their beam- and branch-line.

x	0.000"	center of occluding edge (aperture)
z	513.588"	occluding edge (aperture)
y		adjustable, occluding edge (aperture)
roll	0.000	aperture (occluding edge)
pitch	5.700deg	us edge to aperture
yaw:	+0.000rad	side surface

Tolerance for installation:

x:	+/- 0.005"	measured: _____
y:		adjustable _____
z:	+/- 0.040"	measured: _____
roll:	+/- 0.001 rad	measured: _____
pitch:	+/- 0.002 rad	measured: _____
yaw:	+/- 0.002 rad	measured: _____
stage position, scribed and		measured: _____