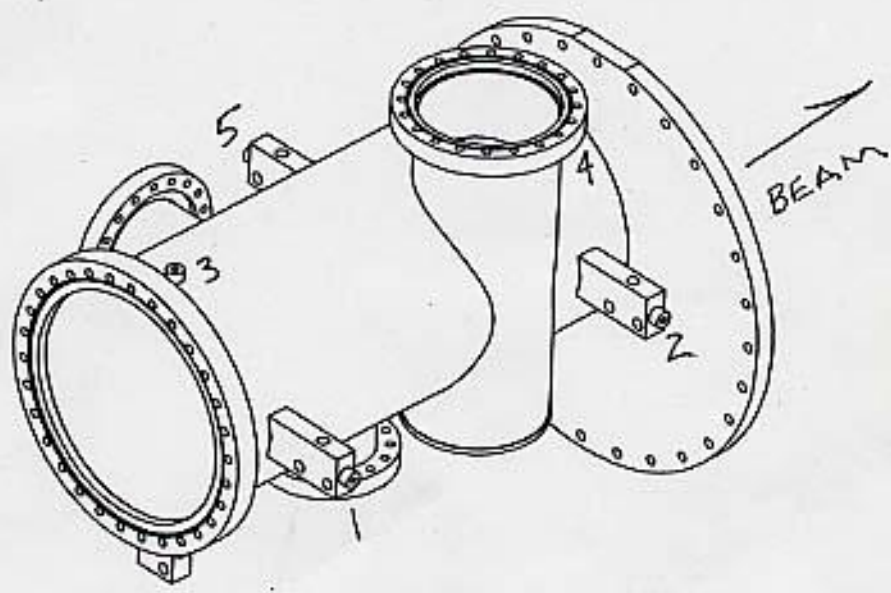


SSRL  
BL 2-1 SLIT TANK  
SA451-052-81 REV.2



	X	Y	Z
1	-10.818	+ .026	+3.432
2	-10.803	+ .006	+20.784
3	- .003	+6.862	+2.480
4	- .015	+6.844	+21.383
5	+10.850	- .015	+16.352

SSRL  
BLZ-1 SLIT TANK  
LAB DATA check

10-4-05  
J.M., L.G.

(X)  
6.731  
5.793  
~~13.500~~  
~~14.340~~  
~~10.500~~  
~~14.080~~  
12.956  
13.901 (13.894)  
12.996  
13.928 (13.934)  
12.978  
13.916  
+ 19.709 LOS

10.000 REF  
+ 19.709 LOS  

---

29.709 = ~~4~~  
59.500  

---

- 29.791 LOS  
803

pls) 9.875 FLAT  
3.144 OFFSET  

---

6.731

1) 10.818  
2) 10.803  
1) 17.973  
1.000  

---

18.973  
29.791  

---

-10.818

2) 17.988  
1.000  

---

18.988  
29.791  

---

-10.803

3) 18.712  
1.000  

---

19.712  
19.709  

---

-.003

4) 18.724  
1.000  

---

19.724  
19.709  

---

-.015

5) 7.859  
1.000  

---

8.859  
19.709  

---

+10.850

TOP FLANGE  
23.614 R640  
3.368 RADIUS  

---

26.982  
29.791  

---

-2.809 found  
2.88 s/B  

---

+1.071

28.805

SSRL

10-4-05

BL2H SLIT TANK

J.M., L.G.

LAB DATA

(Y)

ROLL ON TOP FLANGE

u/s FL. INSERT  
φ 11.585

(+) ~~4.382~~  
4.371  
13.315

(-) ~~4.385~~  
4.371

TOP FL. INSERT  
φ 6.734

+8.944

5 | 4 2  
   | 5 1

PITCH

u/s) 5.793 R  
7.522 READ  
13.315

D(s) 9.875  
(-) 1.000 offset  
8.875

+ 13.315 HI

(+) ~~4.428~~  
4.440  
8.875  
13.315

(-) ~~4.432~~  
4.440  
8.875  
13.315

1) 12.289  
1.000  
13.289  
13.315

+0.026

2) 12.309  
1.000  
13.309  
13.315

+0.006

3) 5.453  
1.000  
6.453  
13.315

+6.862

5) 5.471  
1.000  
6.471  
13.315

+6.844

6) 12.330  
1.000  
13.330  
13.315

-0.015

SSRL

BL 2-1 SUIT TANK check on

10-4-05

J.M., L.G.

(Z) 16.530 u/s FACE

- 16.530 WS

$$\begin{array}{r}
 1) \ 18.962 \\
 \underline{1.000} \\
 19.962 \\
 16.530 \\
 \hline
 +3.432
 \end{array}$$

$$\begin{array}{r}
 2) \ 36.314 \\
 \underline{1.000} \\
 37.314 \\
 16.530 \\
 \hline
 +20.784
 \end{array}$$

$$\begin{array}{r}
 3) \ 18.010 \\
 \underline{1.000} \\
 19.010 \\
 16.530 \\
 \hline
 +2.480
 \end{array}$$

$$\begin{array}{r}
 4) \ 29.356 \\
 \underline{8.557} \\
 37.913 \\
 16.530 \\
 \hline
 +21.383
 \end{array}$$

$$\begin{array}{r}
 5) \ 31.882 \\
 \underline{1.000} \\
 32.882 \\
 16.530 \\
 \hline
 +16.352
 \end{array}$$

\* 2's ARE FROM U/S FLANGE FACE \*

D/S FACE

TOP 8.534

(+) 8.545

BOT 8.556

(-) 8.547