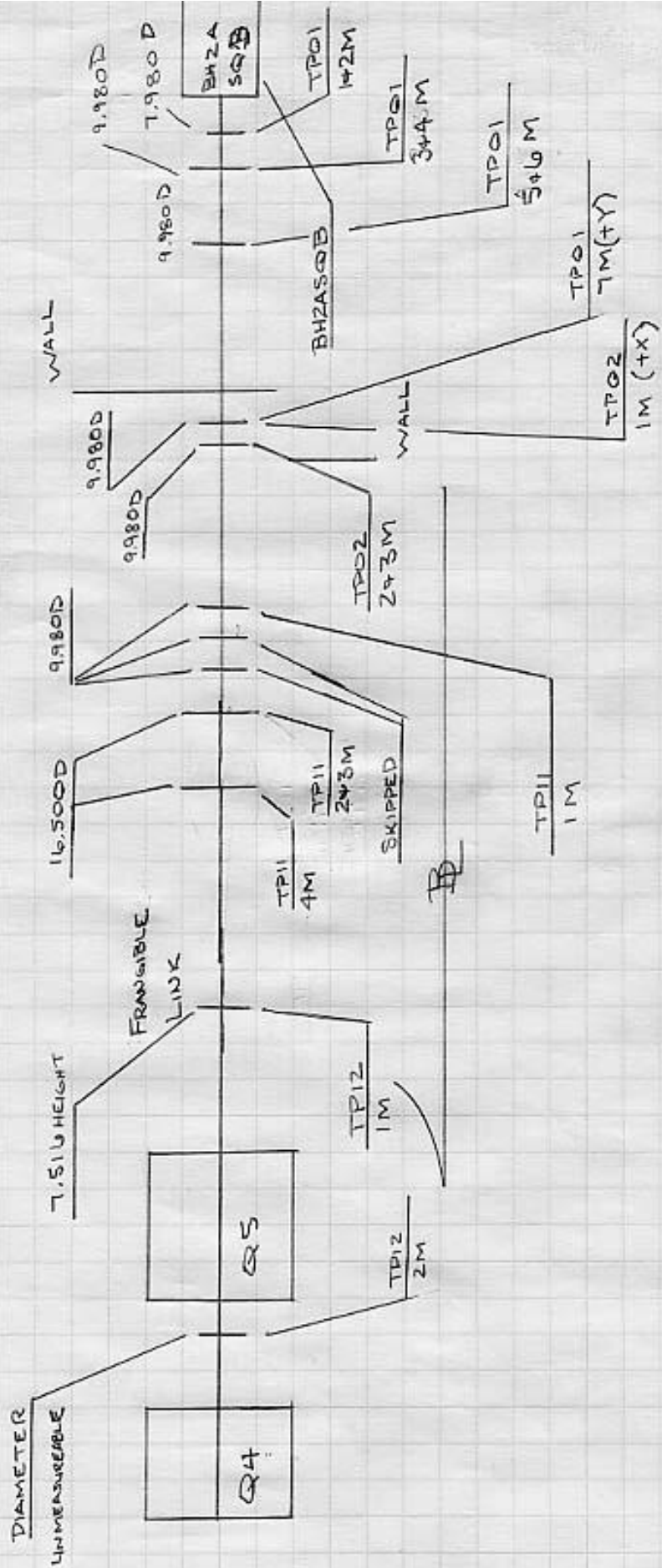


PEP 2 FLANGE LOCATIONS
2A SIDE

1/19/05
MR CB



PEP 2 A LOCATIONS

CB MR
1/18/05

TPD1

1M	+Y	.750	OFFSET	>	7.980 DIA. FLANGE
2M	+X	.750)		
3M	+Y	.750)	>	9.980 DIA. FLANGE
4M	+X	.750)		
5M	+Y	.750	OFFSET	>	9.980 DIA FLANGE
6M	+X	.750)		
7M	+Y	.750)		9.980 DIA FLANGE

TPD2

1M	+X	11.000)		9.980 DIA FLANGE
2M	+Y	.750))
3M	+X	11.000))

TP11

1M	+Y	.750	OS		9.980 DIA FLANGE
2M	+Y	.750)		16.500))
3M	+X	16.000	OS))
4M	+Y	.750	OS))

TP12

1M	+Y	19.00	OS		7.516 HEIGHT
2M	+Y	19.480	OS		RADIUS UNKNOWN

PEPZA
FLANGE "Z" LOCATIONS

1/20/05
MR CB

Z "0" CENTER OF BH2ASQB

FLANGE

1 13.80

2 35.45

3 149.05

4

5

6

7

CANT GET "Z" ON FLANGE (VAT VALVES)

Z DIST FROM U/S Q5 FACE Q5 57.00"

MEASURE U/S

- 6.1" FROM ALL MEASUREMENTS.

DID NOT LOCATE YORK ON FLANGE 8

8 4.155 M 163.58'

198.18' U/S

9 3.767 M 148.31'

182.91' FROM EQ5

10 2.560 M 100.79'

135.39'

11 0.130 M 5.12'

39.72'

MEASURE FROM D/S FACE Q5

D/S

12 10.50"

39.00' FROM EQ5

TP2A
FLANGE LOCATIONS
BH2ACPZ

2/2/05
MR FG

TP2A20 (STA)

FLANGE 9

1M .750 o/s +Y 16.500 DIA

2M 17.000 o/s +X 16.500 DIA

FLANGE 10

3M .750 o/s +Y 16.500 DIA