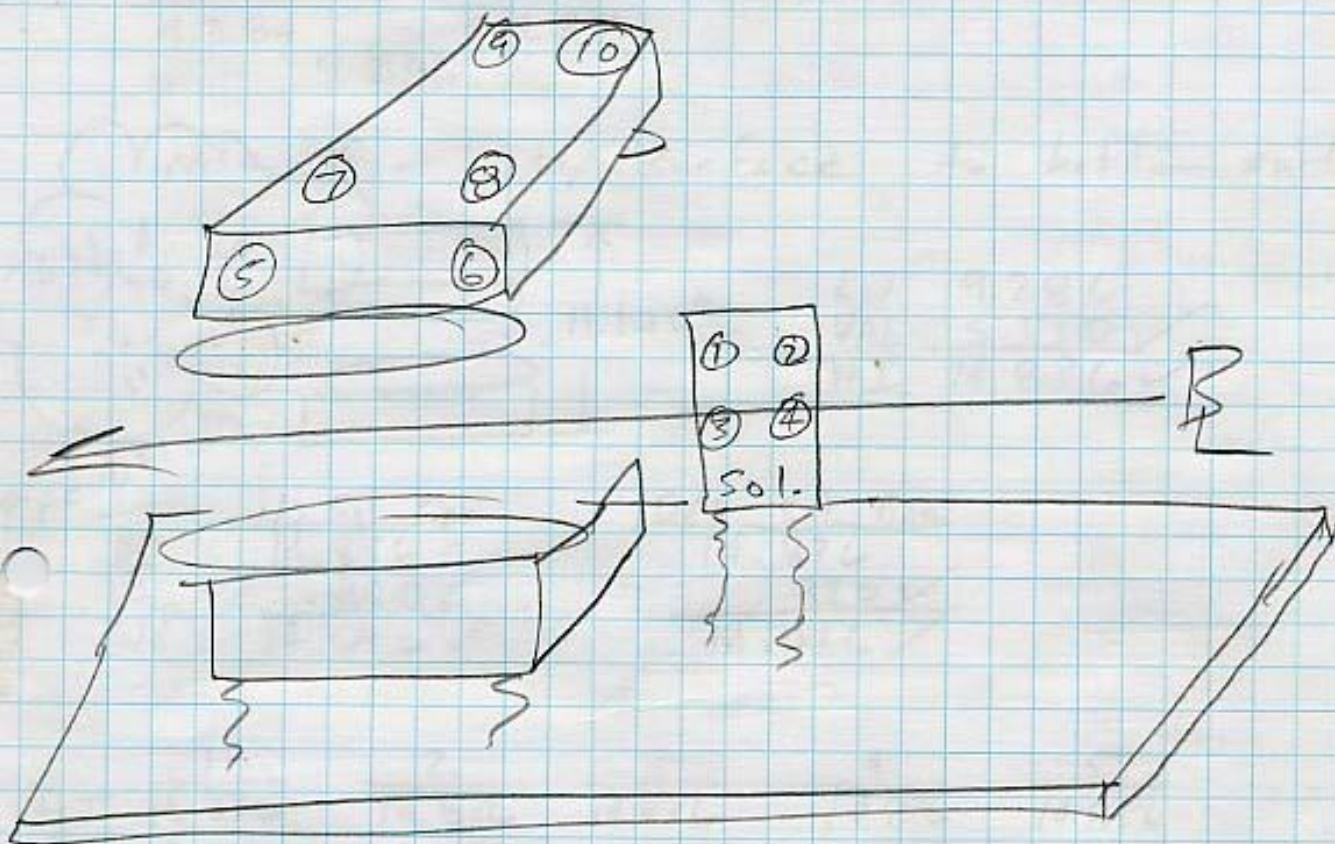


E166

SPECTROMETER FFTB

7 OCT 2004
M. Rogers
H. Imfeld

SCANNED



	<u>1</u>	<u>2</u>	<u>3</u>	<u>4</u>	<u>5</u>	<u>6</u>	<u>7</u>	<u>8</u>	<u>9</u>	<u>10</u>
X	2.597	2.601	5.714	5.714	7.999	7.997	4.014	3.188	-21.974	-22.110
Y	5.095	5.096	0.320	0.333	4.849	4.809	7.049	7.048	7.039	7.039
Z	-6.882	-9.488	-6.835	-9.425	3.310	-3.446	3.323	-1.967	3.083	-3.396

Add .136^v
to Y's.
5 power
added.
5-10
To Spectrometer
not Solenoid

E-166
11-1090-9 FFTB 166

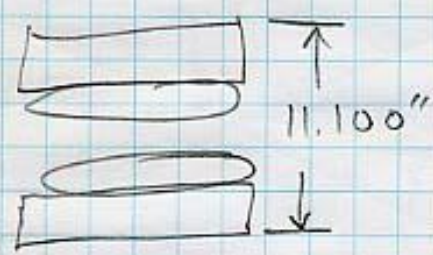
7 OCT 2004
M. Rogers
H. Imfeld

① Level top surface @
Solenoid for pitch and
roll

✓ MR 10/07/04

+X 9.284
-X 9.287
9.286

MTC From top surface to bottom surface



RD 9.286
VAL 5.550 ✓
HI 14.836 ✓

Pipe $\phi = 1.640$

U/S Sol. Pipe
HI 14.836
VAL .820 ✓
SIR 14.016 ✓

D/S Sol. Pipe
14.836
.820 ✓
14.016 ✓

	1	2	3	4	5
HI	14.836	14.836	14.836	14.836	14.836
RD	8.741	8.740	13.516	13.503	8.987
S/T	6.095 ✓	6.096 ✓	1.720 ✓	1.833 ✓	5.849 ✓
FT	1	1	1	1	1
VAL	5.095 ✓	5.096 ✓	0.320 ✓	0.333 ✓	4.849 ✓

	6	7	8	9	10
HI	14.836	14.836	14.836	14.836	14.836
RD	9.027	6.787	6.788	6.797	6.797
S/T	5.809 ✓	8.049 ✓	8.048 ✓	8.039 ✓	8.039 ✓
FT	1	1	1	1	1
VAL	4.809 ✓	7.049 ✓	7.048 ✓	7.039 ✓	7.039 ✓

(X)

RD Top plate
VAL
LOS

3.485
6.500
9.985 ✓

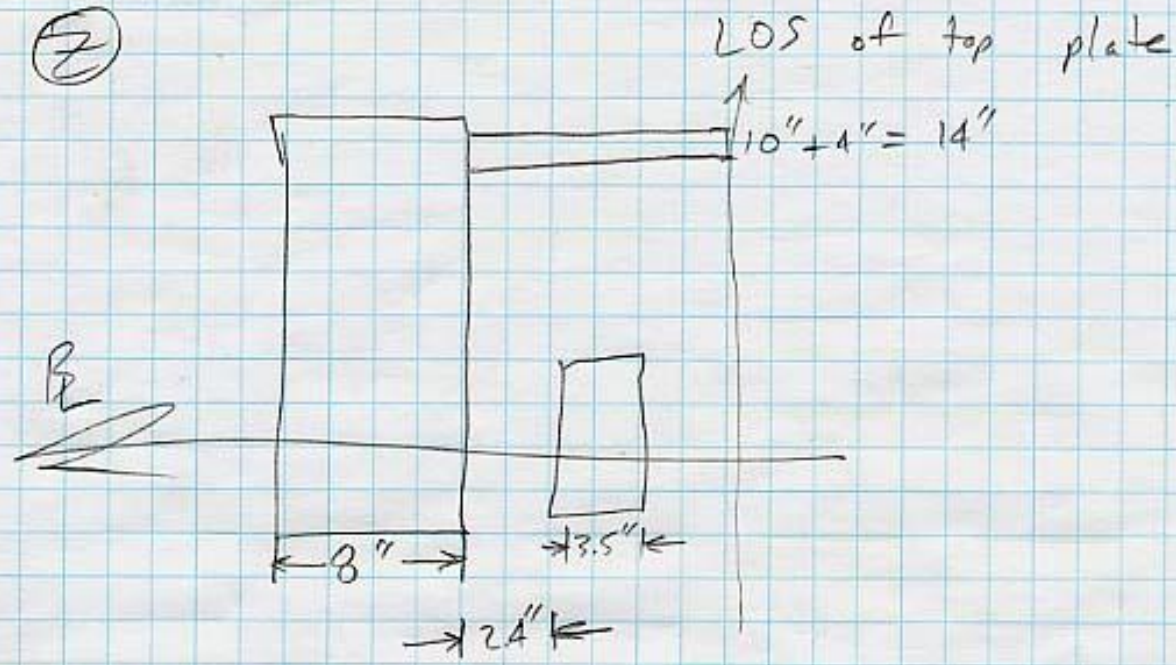
LOS 9.985
VAL .820 ✓
S/R 9.165 ✓
SET 9.165 ✓

D/S Pipe
9.985
.820 ✓
9.165 ✓
9.165 ✓

	<u>1</u>	<u>2</u>	<u>3</u>	<u>4</u>	<u>5</u>
LOS	<u>9.985</u>	<u>9.985</u>	<u>9.985</u>	<u>9.985</u>	<u>9.985</u>
RD	<u>6.388</u>	<u>6.384</u>	<u>3.271</u>	<u>3.271</u>	<u>0.986</u>
S/T	<u>3.597</u> ✓	<u>3.601</u> ✓	<u>6.714</u> ✓	<u>6.714</u> ✓	<u>8.999</u> ✓
FT	<u>1</u>	<u>1</u>	<u>1</u>	<u>1</u>	<u>1</u>
VAL	<u>2.597</u> ✓	<u>2.601</u> ✓	<u>5.714</u> ✓	<u>5.714</u> ✓	<u>7.999</u> ✓

	<u>6</u>	<u>7</u>	<u>8</u>	<u>9</u>	<u>10</u>
LOS	<u>9.985</u>	<u>9.985</u>	<u>9.985</u>	<u>9.985</u>	<u>9.985</u>
RD	<u>0.988</u>	<u>4.971</u>	<u>5.797</u>	<u>30.964</u>	<u>31.095</u>
S/T	<u>8.997</u> ✓	<u>5.014</u> ✓	<u>4.188</u> ✓	<u>-20.979</u> ✓	<u>-21.110</u> ✓
FT	<u>1</u>	<u>1</u>	<u>1</u>	<u>1</u>	<u>1</u>
VAL	<u>7.997</u> ✓	<u>4.014</u> ✓	<u>3.188</u> ✓	<u>-21.979</u> ✓	<u>-22.110</u> ✓

⑦



Take your out of top plate.
Set you of solenoid.

LOS of solenoid.

		<u>w/s sol. + X</u>	<u>-X</u>
4	LOS	-14.000	-14.000
3.5	VAL	-9.900	-9.900
24	S/R	-4.100	-4.100
<u>9.9</u>	SET	-4.098	-4.102

	<u>1</u>	<u>2</u>	<u>3</u>	<u>4</u>	<u>5</u>
LOS	-14.000	-14.000	-14.000	-14.000	-14.000
RD	-6.118	-3.512	-6.165	-3.575	-16.310
S/T	-7.882 ✓	-10.488 ✓	-7.835 ✓	-10.425 ✓	2.310 ✓
FT	-1	-1	-1	-1	-1
VAL	-6.882 ✓	-9.488 ✓	-6.835 ✓	-9.425 ✓	3.310 ✓

	<u>6</u>	<u>7</u>	<u>8</u>	<u>9</u>	<u>10</u>
LOS	-14.000	-14.000	-14.000	-14.000	-14.000
RD	-9.554	-16.323	-11.033	-16.083	-9.604
S/T	-4.446 ✓	2.323 ✓	-2.967 ✓	2.083 ✓	-4.396 ✓
FT	-1	-1	-1	-1	-1
VAL	-3.446 ✓	3.323 ✓	-1.967 ✓	3.083 ✓	-3.396 ✓