

Site Safety, Security & Access Guide



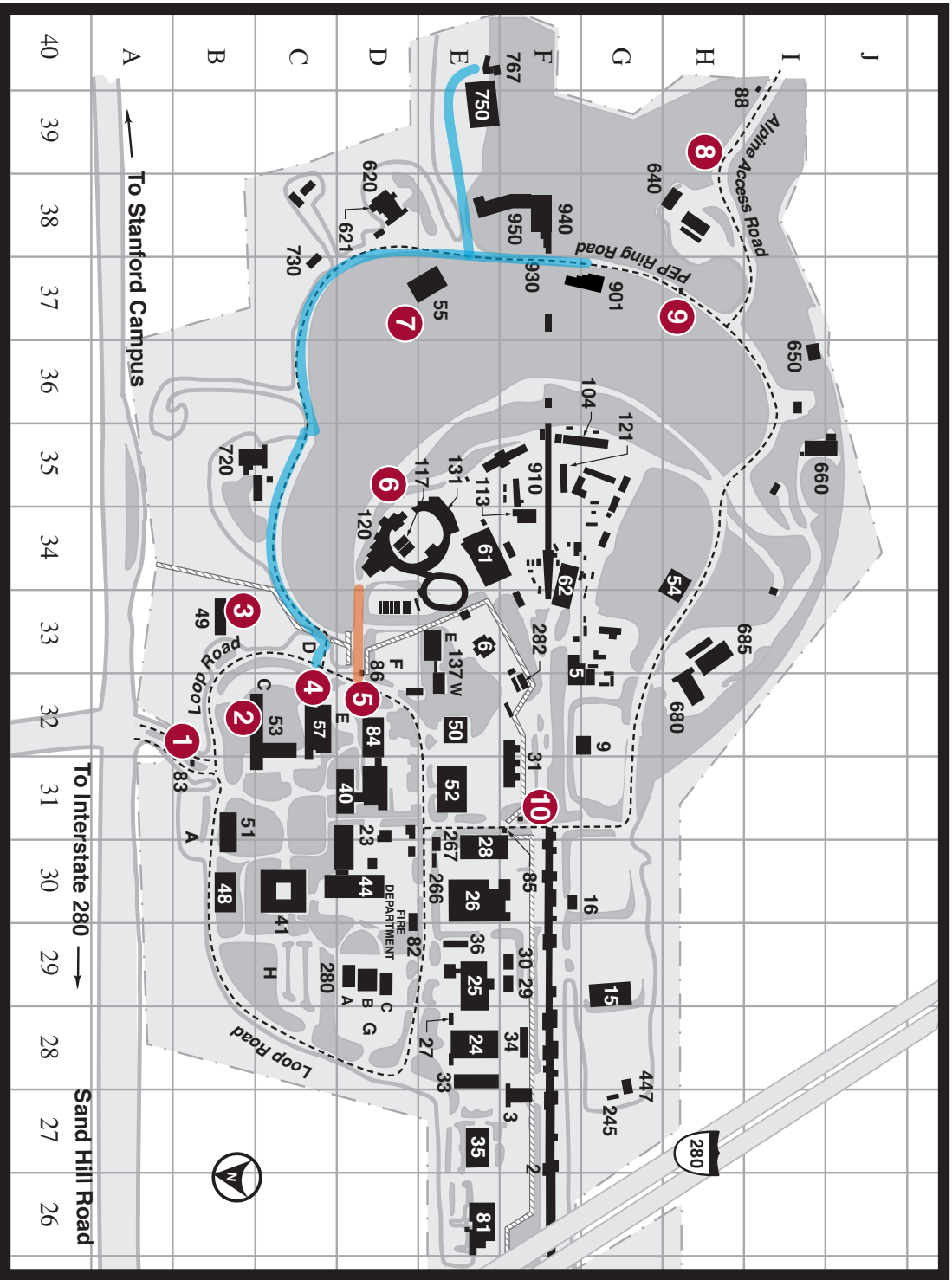
Welcome to the SLAC National Accelerator Laboratory

SLAC is one of the world's leading physical science laboratories. Established in 1962, and operated by Stanford University for the U.S. Department of Energy, our mission is to make discoveries in photon science, particle physics, and particle astrophysics. We are enriched annually by over 3,000 visiting scientists from universities, laboratories, and industrial concerns from the U.S. and foreign countries.

SLAC strives to be a model of a safe and healthy workplace and environmental stewardship. Our employees are trained on our site-specific hazards and controls to mitigate risk. Many hazards are more common to an industrial facility and are controlled by standardized prevention and protection measures.

As a guest you are expected to consider **SAFETY** and the protection of the environment as a paramount concern, to stop working if you or anybody else is in imminent danger, and report unsafe behavior.

The Visitor, User, Employee (VUE) Center, located on the first floor of the Science and User Support Building, houses training, badging, immigration, and housing support. SLAC Site Security operations run 24 hours a day, seven days a week. All other services are available Monday through Friday, except most public holidays and during the winter closure in December.



- 1 – Sand Hill Road Main Gate
 - 2 – VUE Center (User Support, Security, Badging) B053
 - 3 – Stanford Guest House
 - 4 – Pedestrian and Driving Access to ARC and LCLS
 - 5 – Gate 17 Access to SSRL
 - 6 – Pedestrian Gate
 - 7 – Arriaga Recreation Center (ARC)
 - 8 – Alpine Gate
 - 9 – LCLS Gate
 - 10 – Sector 30 Gate
- LCLS Pedestrian Route
— SSRL Pedestrian Route

Emergencies

If you witness an emergency you need to immediately activate our emergency notification system.

Life Threatening Emergencies

Examples: Medical Emergencies, Illness or Injury, Fires, Explosion, Large Chemical Spills/Releases, Release of Radioactive Material

- Dial 911
- Then call Security at ext. 5555 (from a land-line) or 650-926-5555 (from a mobile phone)

Non-Life Threatening Emergencies

Examples: Minor Injuries, small chemical spills/releases, broken equipment that could pose a safety risk, threats to the environment

- Call your SLAC Point of Contact/FCM, then call Security at ext. 5555 (from a land-line) or 650-926-5555 (from a mobile phone)
- If it is a Medical issue between 8:00 AM and 4:30 PM, go to SLAC Medical in Building 28. If after hours, ext. 5555 will provide you with information for the nearest clinic for treatment.

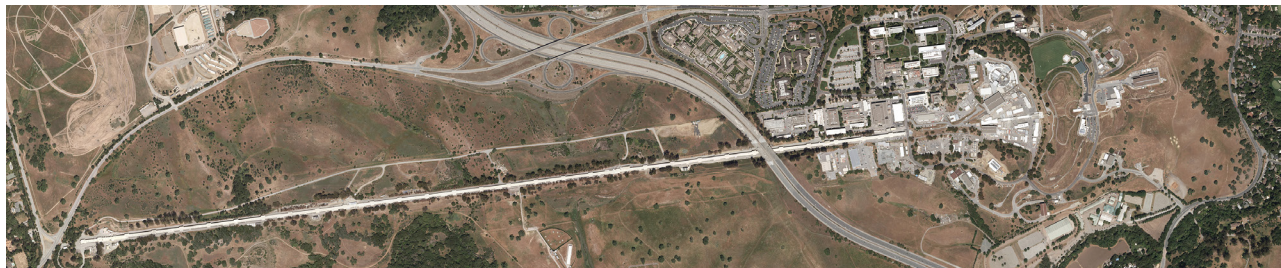
In Case of an Earthquake

- Remain calm
- Quickly seek safe refuge; protect your head
- When safe, proceed to an exterior emergency assembly area
- Do not leave SLAC until you are accounted for by your SLAC Point of Contact/FCM

SLAC maintains a cache of emergency supplies to be used in the event of a natural disaster. Our supplies include food, water, medical supplies, and communication equipment.

If in Doubt as to the Seriousness of an Incident

- Dial 911
- Then call Security at ext. 5555 (from a “land-line”) or 650-926-5555 (from a mobile phone)



If you have any questions, review with your host or point-of-contact, or contact the ES&H Service Desk at ext. 4554 or Security at ext. 2551

Safety Information

Driving/ Bicycling

- Speed Limits - The maximum speed limit is 25 MPH with some areas posted at lower speeds. Speed limits are strictly enforced.
- Parking - Parking is available in various locations throughout the campus (see map). Please follow parking signs and park in handicap-designated spots only if you have a valid handicap placard. Do not park in “Government Vehicles” spots if you are not driving a vehicle with government plates.
- Helmets - Helmets are required when riding a bicycle on the site.
- Be Vigilant - Some of the uncommon traffic related hazards you may encounter at SLAC include frequent construction projects, industrial vehicles, electric carts and pedestrians 24 hours per day, 7 days a week. Also be patient when entering and exiting SLAC and watch for pedestrians, bicyclists and for construction vehicles that may impede your visibility.

Consent to Search

SLAC is private property. SLAC reserves the right to inspect all incoming and outgoing items and vehicles. Your entrance into this facility constitutes your consent for inspection.

Prohibited Articles

- Firearms, other dangerous or deadly weapons, explosives, and incendiary devices
- Controlled substances including illegal drugs and associated paraphernalia (excluding valid prescription medicine) and alcoholic beverages
- Contraband or other items prohibited by State and Federal statute; and Unauthorized possession of U.S. Government or Stanford University Property

Smoking

Smoking is only permitted in posted designated smoking areas and is never allowed in any building (or within 20 feet of an entrance or opening)

Access

SLAC welcomes thousands of people each year for research, business, and educational purposes. Access is granted to individuals who have a business need and a SLAC point of contact.

Visitors are allowed in the general access area (GAA) but must be escorted within the safety access area (SAA). People here to perform work (e.g., staff, subcontractors, users and affiliates) must complete safety orientation training and obtain a SLAC identification (ID) badge, after which they are allowed unescorted in the safety access area.

Badges are required at external and internal gates and to enter certain buildings and rooms. Badges must be worn and displayed at all times in the SAA. With the exception of children, anyone without a badge must carry a government issued photo ID. Each individual must have and use his or her own badge at each gate or access point for every entry; badges may not be loaned and individuals may not “piggyback” on another’s access privileges (by entering a gate or door opened by someone else), unless properly escorted.

Access gates (see map on back) include:

- Main Gate (Sand Hill Road): access point for all individuals entering the site. This entry allows access to the GAA
- Alpine Gate (Alpine Road): due to potential hazards in this area the Alpine Gate is accessible only to individuals with current SLAC badges. Visitors may not use this gate.
- Internal vehicle and pedestrian gates provide access to the accelerator area within the SAA. These gates are accessible only to individuals with current SLAC badges. Visitors may use these gates only if properly escorted.

Visitor access is generally restricted to 7:00 AM to 5:00 PM. Badged personnel have 24/7 access, with the following exceptions:

- Summer student access is limited to M-F from 6:00 AM to 6:00 PM, unless otherwise arranged with Security
- Subcontractors have access during business hours, M-F from 6:00 AM to 6:00 PM, unless otherwise arranged with Security.

Access privileges may be withdrawn at any time, for various reasons, including nonconformance with SLAC policies and procedures.