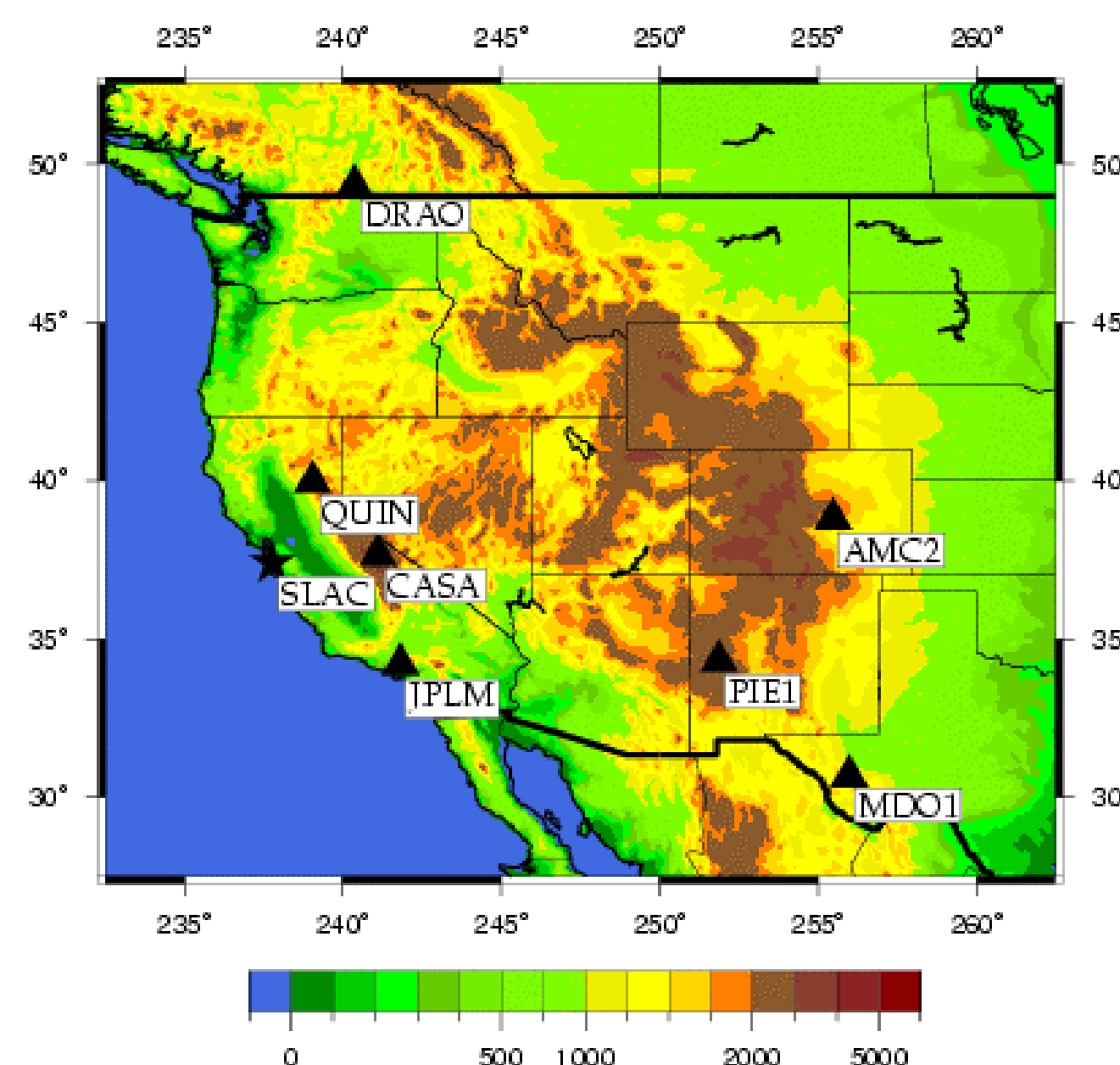


The Alignment Engineering Group

RTK Mapping Presentation – June 4, 2002

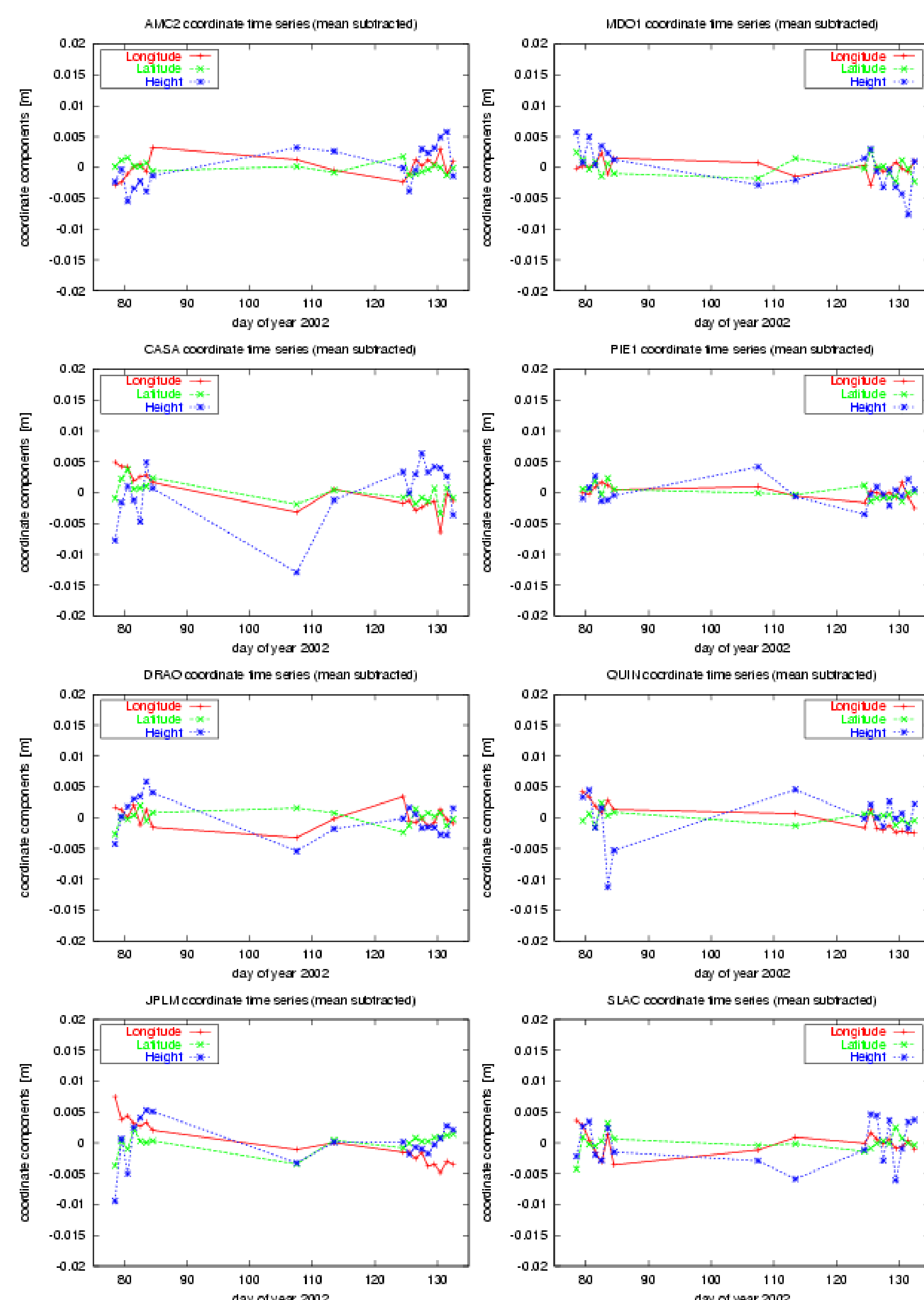
Establishing SLAC's Master Control Station Data Analysis and Results

Chosen Network of GPS Sites:

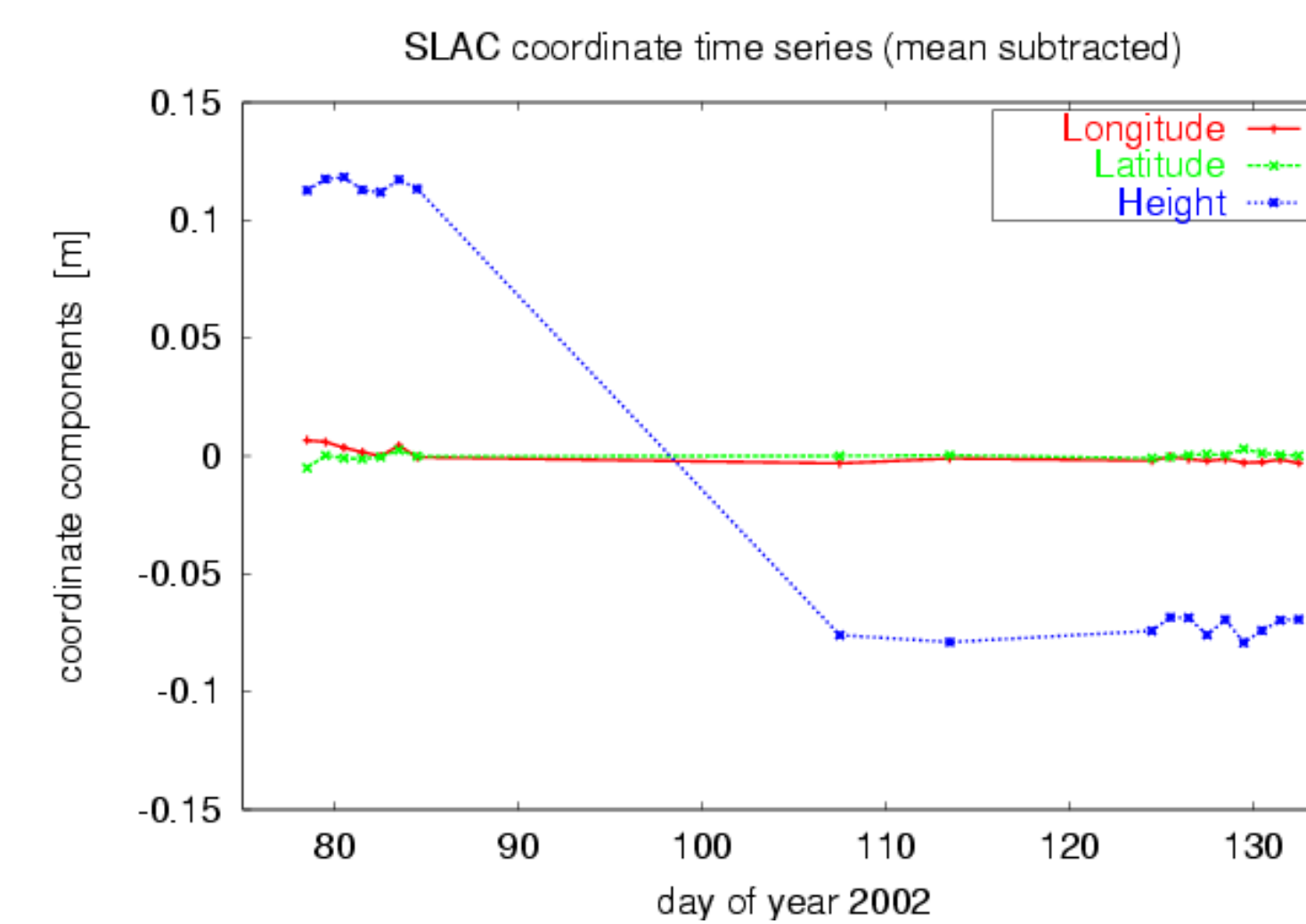


AMC2	Colorado Springs, CO
CASA	Mammoth Lake, CA
DRAO	Penticton, BC, Canada
JPLM	Pasadena, CA
MDO1	Fort Davis, TX
PIE1	Pietown, NM
QUIN	Quincy, CA

Coordinate Time Series:



SLAC: Change of Antenna Mount



Conventional: $D_h = 0.1869 \text{ m}$
GPS derived: $D_h = 0.1877 \text{ m}$

