

SLAC Magnetic Measurement Plan and Traveler for 190A Unipolar LCLS-II Quadrupoles of Type 2Q4W (SA-344-112-18)

This traveler is intended to cover mechanical fiducialization and magnetic measurements of the 2Q4W quadrupole magnets needed for S30XL line of LCLS-II. There are a total of 5 of magnets needed for the LCLS-II. The table below gives the MAD names, polarities, and installation directions of the 190 A unipolar 2Q4W quadrupoles.

MAD Name	Eng. Name	Drawing#	Barcode	Polarity	Bus bars
QDAS1a	2Q4W	SA-344-112-18	4251	QD	downstream
QDAS1b	2Q4W	SA-344-112-18	4252	QD	downstream
QDAS2a	2Q4W	SA-344-112-18	4253	QF	downstream
QDAS2b	2Q4W	SA-344-112-18	4254	QF	downstream
QDAS11	2Q4W	SA-344-112-18	4255	QD	downstream

Receiving:

The following information is to be noted upon receipt of the magnets by the SLAC MM group:

Received by (MMG initials):	SDA
Date received (dd-mm-yyyy):	11/19/2020
SLAC barcode number:	4254
Vendor serial number on the magnet:	252

Preparation:

A beam direction arrow, with text “beam direction”, is to be applied to the top and/or connector side of the magnet with a sticker supplied by the engineer (? Will determine the direction).

Beam-direction arrow in place (initials):	SDA
---	-----

Fiducialization:

Fiducialization may be done before or after magnetic measurements. The magnet is to be fiducialized by the CMM group. This will require the installation of removable tooling balls,

location of the geometric axis of the poles of the magnet, and location of tooling balls with respect to the center of this geometric axis when the poles are aligned precisely horizontal.

CMM technician (initials):	KC
----------------------------	----

URL of on-line CMM fiducialization data (please modify or correct if necessary):

http://www-group.slac.stanford.edu/met/MagMeas/MAGDATA/LCLS-II/Fiducial%20Reports/L204254_Fiducial_Report.pdf

Magnetic Measurements:

Enter URL of on-line magnetic measurements data (please modify or correct if necessary):

http://www-group.slac.stanford.edu/met/MagMeas/MAGDATA/LCLS-II/Quad/4254

- 1) Determine the connection polarity (with main supply outputting positive current) which produces a “positive” field polarity and “negative” field polarity as shown below:

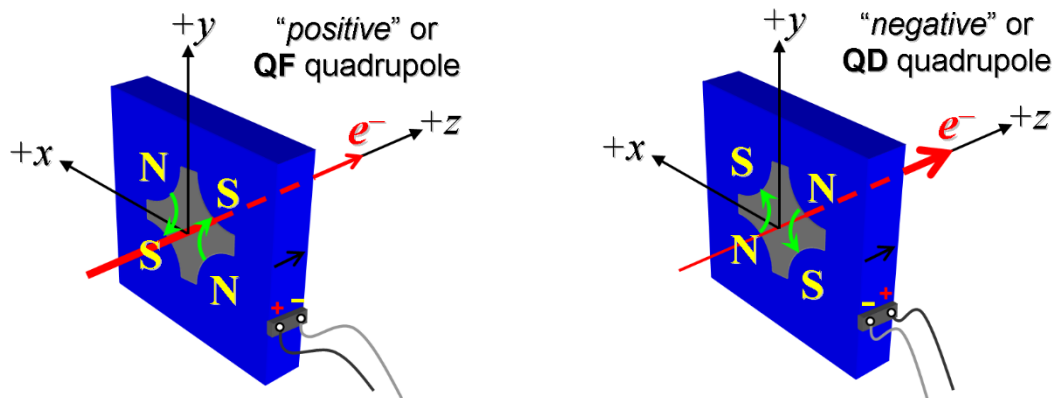


Figure 1. Polarity convention for magnets having “positive” (left) and “negative” (right) polarities.

- 2) Mark the polarity near the magnet leads with clear “+” and “-” labels as shown above.

Magnet polarity chosen from Fig. 1 is (P or N):	P
---	---

- 3) Connect the magnet to the LCW supply. The total magnet flow should be 0.8 gpm. Recrd the ΔP and flow below.

Record total flow rate and pressure.	0.7 gpm @ 114 psi
--------------------------------------	-------------------

- 4) Connect the magnet terminals in the correct polarity as established above, to a unipolar power supply with maximum current $I \geq 190$ A.
- 5) Run the magnet up to 190 A for ~30 minutes to warm it up (record temperature).

LCW delta T (°C)	7.76 °C
Ambient temperature (°C):	19.7 °C
Final magnet steel temperature (°C):	25.7 °C

- 6) Standardize the magnet, starting from zero to 190 A and back to zero, through three full cycles, finally ending at zero, with a flat-top pause time (at both 0 and 190 A) of 10 seconds. Use a cosine ramp rate of 20 A/sec, and record the ramp rate used.

Standardization complete (initials):	SDA
Ramp rate used (A/sec):	20 A/sec

- 7) If the power supply can be run as low as 2 A with <10-mA (0.5%) rms current regulation, then measure $\int Gdl$ from 0 to 190 A following the current range step sizes given in the table below.
- 8)

Current Range	Step Size Up	Step Size Down
0 to 20 A	5-A	5-A
20 to 170 A	10-A	20-A
170 to 190 A	5-A	20-A

Filename & run number of $\int Gdl$ up & down data:	Strdat.ru1, strplt.ru1
---	------------------------

- 9) For all magnets, with rotating coil, measure the magnet harmonics at 20, 100, 190 A current setting. Multipole values should be given as a percentage of the quadrupole moment evaluated at the probe radius.

Filename & run number of harmonic data:	hardat.ru1, harplt.ru1
Probe radius used for harmonics (cm):	1.95965
Rotating Coil Designation (Name)	48BC1.6

10) Confirm the pole-tip field using a Hall probe at an excitation current of 190 A.

Hall probe pole-tip field at 190 A (mean of 4 poles):	0.568 +/- 0.006 T @ 190.057 A
---	-------------------------------

11) For one magnet only, perform a final thermal test. Run the current up to 190 A. Measure the magnet temperature after it stabilizes (2-4 hours?). Record the temperature below.

LCW delta T (°C)	Measured on 4251
Ambient temperature (°C):	Measured on 4251
Final magnet steel temperature (°C):	Measured on 4251

12) Measure the inductance and resistance of the magnet:

Inductance of coil (mH):	2.108 mH
Resistance of coil (Ohms):	0.0638 Ohm
Magnet temperature in degrees C	25.5 °C

13) Upon completion of tests, email URL of on-line data to Mark Woodley. Mark Woodley will determine if the magnet is accepted. Upon acceptance of magnet, analysis data will be placed in on-line data folder.

Magnet accepted and Analysis file(s) put into on-line data folder (initials):	SDA
Assigned beamline location (MAD-deck name):	QDAS2b