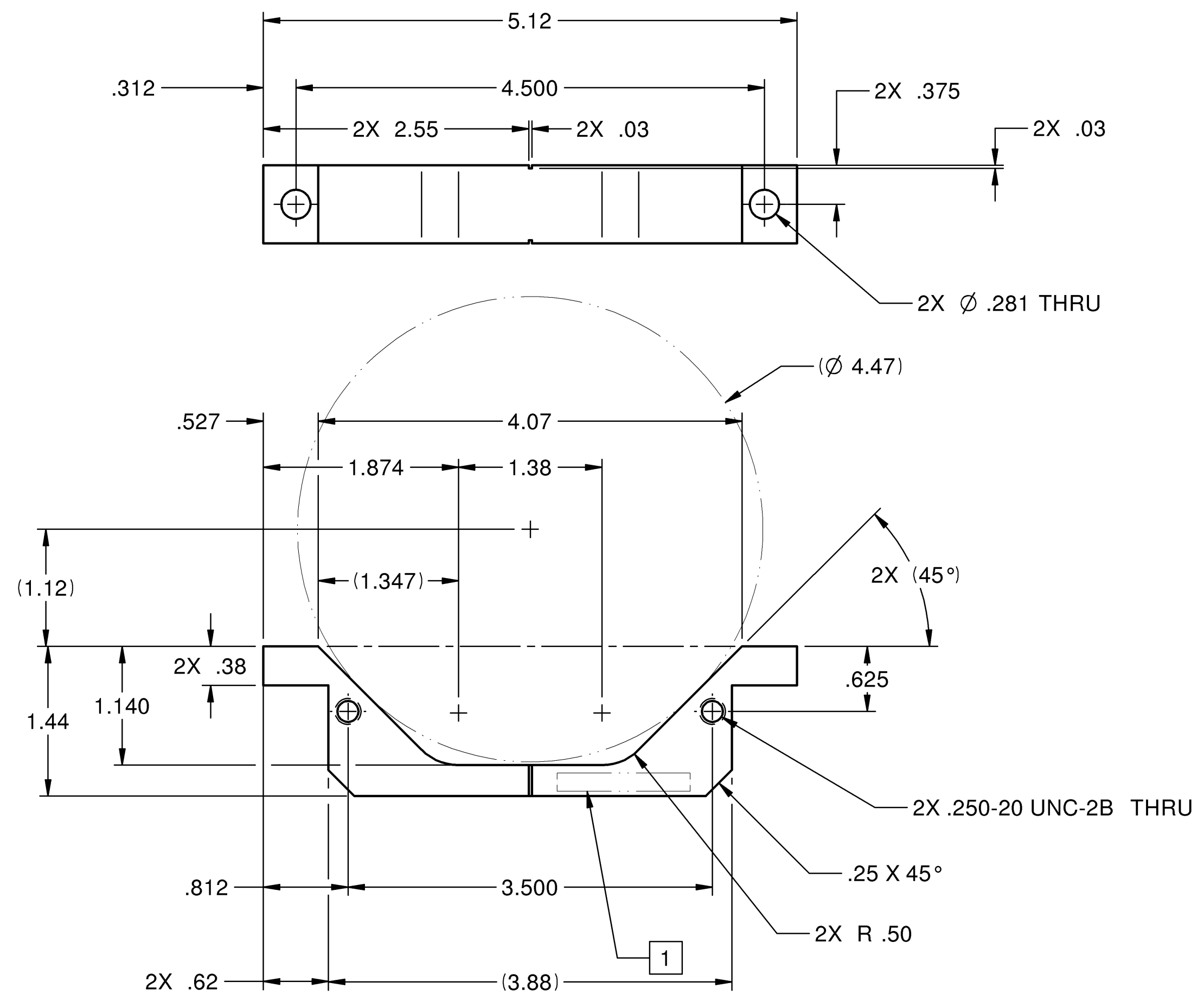


REV	DESCRIPTION	DWN	CHKR	APVD	DATE
-----	-------------	-----	------	------	------



NOTES: UNLESS OTHERWISE SPECIFIED
 1. INSCRIBE PART NUMBER AND REVISION APPROX WHERE SHOWN.

MASS
.185 lbm

---	DIMENSIONING AND TOLERANCING IS IN ACCORDANCE WITH ASME Y14.5M-1994.	SCALE: 1 : 1	DO NOT SCALE DRAWING	ALUMINUM ALLOY 6061-T6
---	UNLESS OTHERWISE SPECIFIED DIMENSIONS ARE IN INCHES.	STANFORD LINEAR ACCELERATOR CENTER U.S. DEPARTMENT OF ENERGY STANFORD UNIVERSITY STANFORD, CALIFORNIA	CAD FILE NAME: pf39185164-0.dft	MATERIAL DESCRIPTION
---	TOLERANCES: BREAK EDGES .005-.015 INTERNAL CORNERS R.015 MAX FRACTIONS ± ---	PROPRIETARY DATA OF STANFORD UNIVERSITY AND/OR U. S. DEPARTMENT OF ENERGY. RECIPIENT SHALL NOT PUBLISH THE INFORMATION WITHIN UNLESS GRANTED SPECIFIC PERMISSION OF STANFORD UNIVERSITY.	LCLS MECHANICAL CAMERA SUPPORT ASSEMBLY CLAMP	
---	DEC .xx ± .02 .xxx ± .005 .xxxx ± ---	ENGR J. DEFFEYER DWN T. OSIER 12-2-13 CHKR J. DEFFEYER	DRAWING NUMBER PF-391-851-64	REVISION NUMBER 0
---	ANGLE ± .5° ALL SURF ✓	OSIER	C	C
SA-391-851-60	NEXT ASSEMBLIES:	LCLS MECH CAMERA SPRT CLAMP		

PF-391-851-64
 0
 C
 SH 1 OF 1