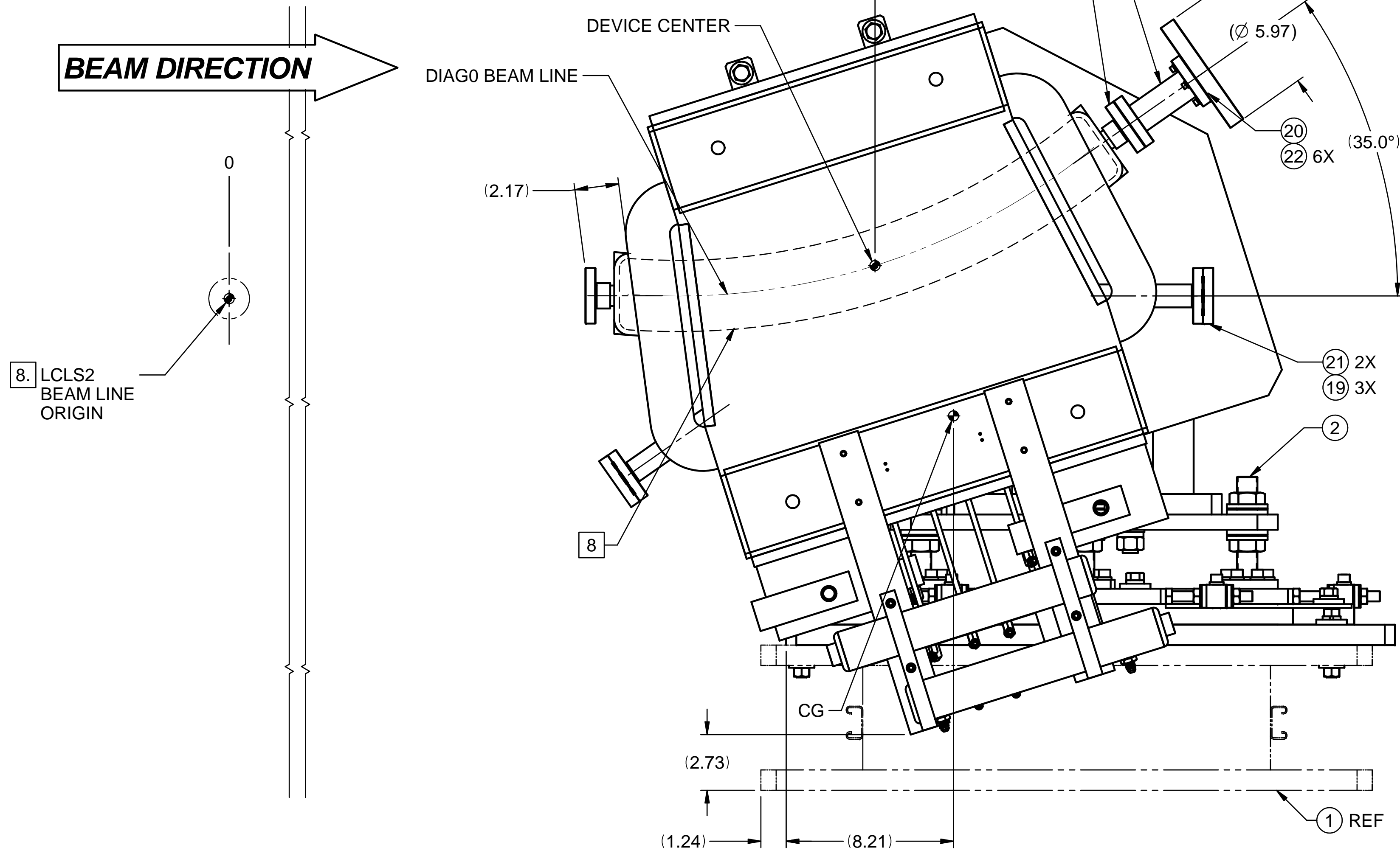
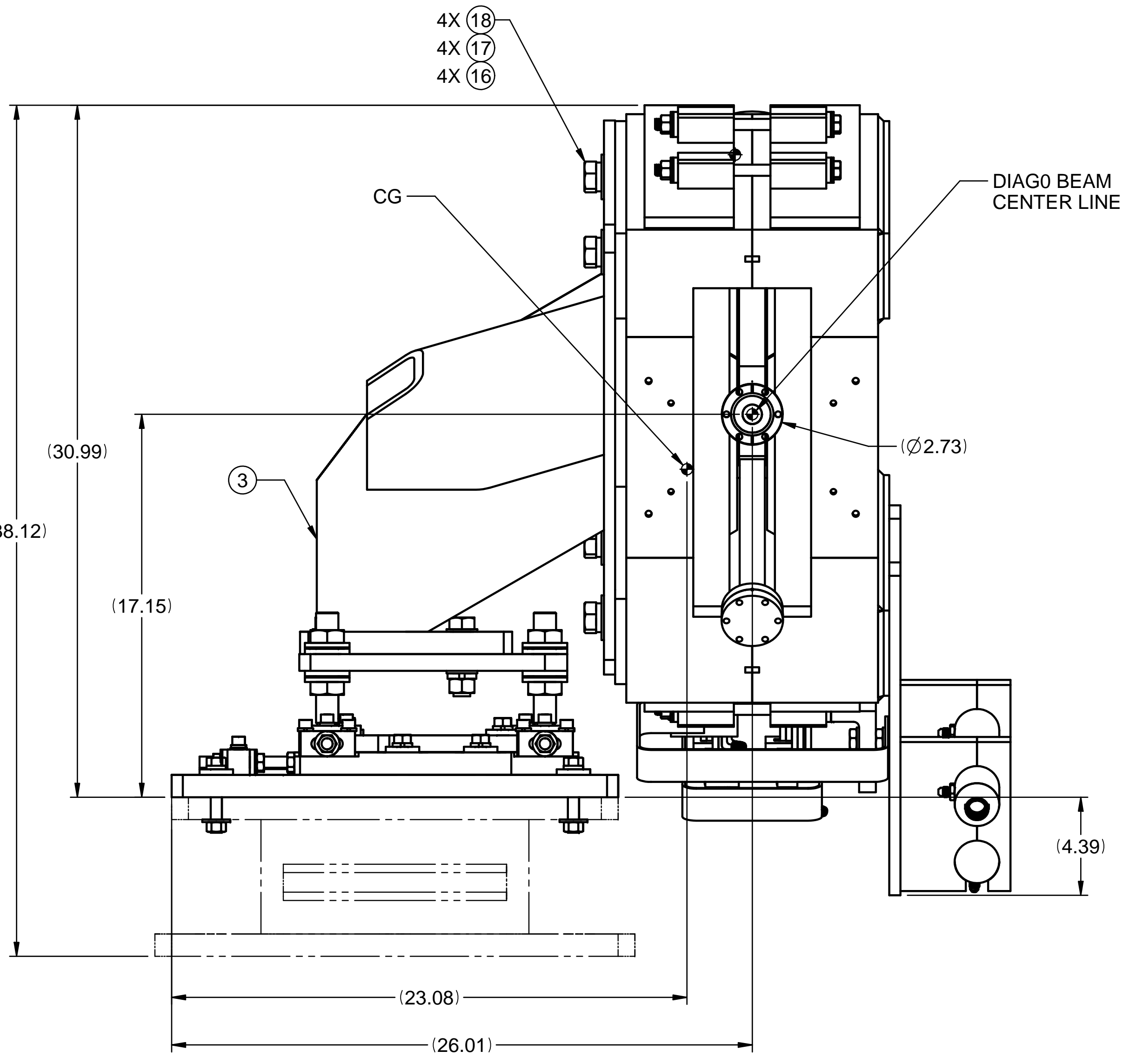
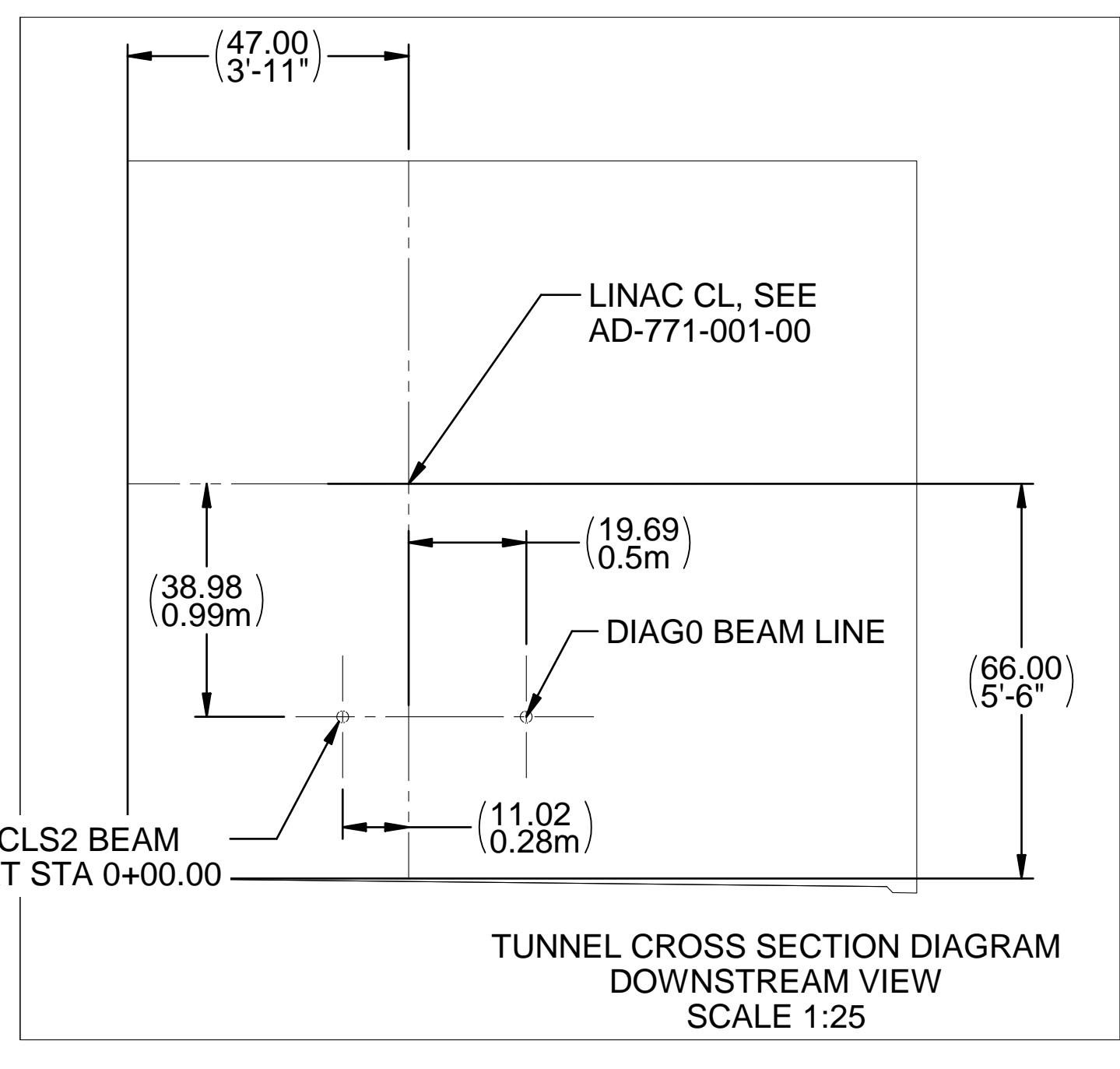


MAD DATA, LINAC BEAM CO-ORDINATES FOR ELEMENTS, MAGNET COORDINATES FOR MAGNETS						
DIAG RAFT 12 V BEND						
ELEMENT	LINAC Z ( m )	LINAC X ( m )	LINAC Y ( m )	LINAC Z ANGLE ( rad )	LINAC X ANGLE ( rad )	LINAC Y ANGLE ( rad )
BYDG0	51.454446	-0.22	-0.602363	0	-0.610865	0



- NOTES: UNLESS OTHERWISE SPECIFIED
- MANUFACTURE TO SLAC SPECIFICATION FP-202-631-14, "FABRICATION OF UHV COMPONENTS."
  - ASSEMBLE IN CONFORMANCE WITH SLAC SPECIFICATION LCLSII-1.1-ES-0476, "PARTICLE FREE ENGINEERING SPECIFICATION."
  - VACUUM FLANGE HARDWARE CONFORMS TO SLAC SPECIFICATION PS-008-000-00, "FASTENER SPECIFICATION PARTICLE FREE APPLICATIONS."
  - TORQUE ALL STRUCTURAL AND VACUUM FASTENERS TO THE VALUES SPECIFIED IN SLAC ENGINEERING NOTE LCLSII-1.1-EN-0726.
  - REFER TO SLAC ENGINEERING NOTE LCLSII-1.1-EN-0505, VACUUM ANALYSIS FOR INJECTOR SYSTEMS HTR, DIAG AND COLO.
  - NOMINAL ASSEMBLY OPERATING PRESSURE IS  $1.0 \times 10^{-8}$  TORR.
  - LABEL ASSEMBLY WITH BLACK GLOSS PAINT USING .50 TALL CHARACTERS IN THE FORMAT: "SA-375-500-28" / "WT = 1759 LB APPROX" AND BEAM DIRECTION ARROW APPROX WHERE SHOWN.

- NOTES: CONTINUED
- LOCATION COORDINATES ARE IN THE LCLSII COORDINATE SYSTEM AS DEFINED IN THE LCLS-II INTERFACE CONTROL DOCUMENT NO.: LCLS-II-1.1-TS-0034, "LCLS-II BEAMLINE COORDINATES". "Z" COORDINATES ARE IN METERS AND ARE FOR REFERENCE ONLY.
  - ITEM MAY BE SUBSTITUTED WITH AN EQUIVALENT ITEM FROM A DIFFERENT VENDOR.
- NONMANDATORY (ENGINEERING DATA)
- SOME HARDWARE NOT SHOWN IN DRAWING VIEWS. REFER TO INDIVIDUAL ASSEMBLY DRAWINGS.
  - THRU FLANGE BOLTS (12 PT. NITRONIC 60) WASHERS (SST 316) AND NUTS (NITRONIC 60) NOT SHOWN.
  - SEE SD-375-000-03, INJECTOR SYSTEM INTEGRATION VACUUM SCHEMATIC.
  - SEE SD-375-000-01, INJECTOR SYSTEM INTEGRATION MECHANICAL SCHEMATIC.



22	FLANGE BOLT 12 PT 1/4-28 UNRF-2A X .875 ROLLED THD, NITRONIC 60	6	
21	SC-250-016-13 (SC-250-016-00) FLANGE, CF, 2.75 OD, BLANK, NON-ROTATABLE, CLRN HOLES	2	
20	MDC 191004 GASKET, 2 3/4 OD FLANGE, OFHC COPPER	1	
19	GASKET NITRONIC 60, BOLT, NUT SET, 2.75 CONFLAT	3	
18	BOLT, HVY HEX, 3/4-10 UNC-2A X 2.5, SST 316	4	
17	WASHER, FLAT RGLR, .75 ID, SS 316	4	
16	WASHER, LOCK, HLCL SPR, .75, SST 316	8	
15	BOLT, HEX, 1/2-13 UNC-2A X 3.0, SST 316	4	
14	NUT, HEX, 1/2-13 UNC-2B, SST 316	4	
13	WASHER, FLAT RGLR, .50 ID, SST 316	4	
12	WASHER, LOCK, HLCL SPR, .50, SST 316	4	
11	BOLT, HEX, 3/4-16 UNF-2A X 3.0, SST 316	4	
10	NUT, HEX, 3/4-16 UNF-2B, SST 316	4	
9	WASHER, FLAT NAR, .75 ID, SST 316	8	
8	MDC 150016 ZERO LENGTH REDUCER FLANGE, 6 CF X 2.75 CF X .78 THK, SST	1	
7	SC-375-205-33 SP 2.75-2.75 FLG X 1.50 X 3.94L	1	
6	SA-380-317-40 BXS MAGNET ASSEMBLY	1	
5	PF-232-001-78 WASHER, .25 THICK	4	
4	SA-380-410-11 BXS CHAMBER ASSY	1	
3	SA-375-513-33 BXS MAG 90 DEG BRKT	1	
2	SA-375-579-86 BXS SPRT STAGE AND BASE	1	
1	SA-375-500-22 SINGLE QUAD STAND	REF	
ITEM	STOCK OR PART NO	TITLE OR DESCRIPTION	QTY

<p>--- DIMENSIONING AND TOLERANCING IS IN ACCORDANCE WITH ASME Y14.5-2009</p> <p>--- UNLESS OTHERWISE SPECIFIED DIMENSIONS ARE IN INCHES</p> <p>--- TOLERANCES: FRACTIONS: ± .005</p> <p>--- DECIMALS: ± .0005</p> <p>--- ANGLES: ± .0001</p> <p>--- ALL SURF. UNLESS OTHERWISE SPECIFIED</p> <p>--- BREAK EDGES: 009-015</p> <p>--- INTERNAL CORNERS: R.015 MAX</p> <p>--- ID-375-000-08</p> <p>--- NEXT ASSEMBLIES:</p>	<p>SCALE: 1:4</p> <p>ESTIMATED MASS: 1758.524 LB</p> <p>CAD FILE NAME: id37550028-0.dft</p> <p>U.S. DEPARTMENT OF ENERGY</p> <p>NATIONAL ACCELERATOR LABORATORY</p> <p>THE DRAWINGS, SPECIFICATIONS AND OTHER DATA HEREIN PROVIDED SHALL NOT BE COPIED, PUBLISHED OR OTHERWISE FURTHER DISSEMINATED WITHOUT PRIOR WRITTEN PERMISSION OF STANFORD UNIVERSITY/SLAC</p> <p>DRG: H.P. ALVAROZ DWN: C.L. NELSON CHK: O. FRENER</p> <p>2019/05/20</p>	<p>LCLS2 MECHANICAL SYSTEM POST LH DIAGNOSTICS DIAGO RAFT 12 V-BEND</p> <p>DRAWING NUMBER: SA-375-500-28</p> <p>REVISION NUMBER: 0</p>
---	---	--