



Plans and Procedures

Title: **CBXFEL Dipole Magnet Measurement Plan**

Document Number: **SLAC-I-120-018-R0**

Page 1 of 7

Document Approval:

Originator: **Gabriel Marcus, Chicane Subsystem Lead**

Gabriel Marcus

Gabriel Marcus (Jan 18, 2022 14:29 PST)

Approver: **Scott Andersen, Magnet Measurements**

Scott Anderson

Scott Anderson (Jan 18, 2022 14:59 PST)

Revision History

Revision	Date Released	Description of Change
R0	1/18/2022	Original Release.

SLAC Magnetic Measurement Plan for LCLS CBXFEL Chicane Dipole Magnets
(July 30, 2021)

This measurement plan covers the mechanical fiducialization, and magnetic measurements of the Cavity Based X-ray Free Electron Laser (CBXFEL) chicane dipole magnets (0.276D14-C). These rectangular C-type dipole magnets are 14 inches long with a 7 mm gap height and have the following MAD names: BCXCBX0, BCXCBX11, BCXCBX12, BCXCBX13, BCXCBX14, BCXCBX21, BCXCBX22, BCXCBX23, and BCXCBX24. The table below gives the MAD names, engineering name, barcode and polarities of the CBXFEL dipoles. The assembly drawing file for the magnets is DSG-000014858.

MAD Name	Eng. Name	Barcode	Polarity
BCXCBX0	0.276D14-C	4590	P
BCXCBX11	0.276D14-C	2319	P
BCXCBX12	0.276D14-C	2320	N
BCXCBX13	0.276D14-C	2321	N
BCXCBX14	0.276D14-C	2322	P
BCXCBX21	0.276D14-C	2323	P
BCXCBX22	0.276D14-C	2324	N
BCXCBX23	0.276D14-C	2325	N
BCXCBX24	0.276D14-C	2326	P

Receiving:

The following information is to be noted upon receipt of the magnets by the SLAC MM group:

Received by (initials):	SDA
Date placed on test stand (dd-mmm-yyyy):	2/11/2022
SLAC barcode number:	2322
Serial number:	007

Preparation:

A beam direction arrow, with text "Beam Direction", is to be applied to the top and connector side of the magnet. The MAD name label should also be attached to the magnet.

Beam-direction arrow and MAD name in place (initials):	SDA
--	-----



Fiducialization:

Fiducialization should be done before magnetic measurements. The magnet is to be fiducialized on a CMM by the Metrology group. This will require the installation of sockets for removable tooling balls, location of the geometric axis of the poles of the magnet, and location of tooling balls with respect to the center of this geometric axis when the poles are aligned precisely horizontal. The pole gap, flatness and parallelism on both upstream and downstream end should also be measured and noted in a report.

CMM technician (initials):	KC
----------------------------	----

URL of on-line CMM fiducialization data (please modify or correct if necessary):

https://www-group.slac.stanford.edu/met/MagMeas/MAGDATA/LCLS-II/Fiducial%20Reports/2322_Fiducial_Report.pdf

Magnetic Measurements:

- 1) Verify that the magnets are complete and undamaged, including wiring connections.

Incoming inspection OK (initials):	SDA
Date of arrival to mag. meas.(mmm-dd-yyyy):	2/11/2022

- 2) Measure the inductance and resistance of the **main** and **trim** magnet coils and also verify the concurrent magnet temperature:

Magnet Coil temperature on top surface (°C):	17.7
Inductance of main coil (mH):	109.9
Resistance of main coil (Ohms):	0.5484
Inductance of trim coil (mH):	3.97
Resistance of trim coil (Ohms):	1.6458

Enter URL of on-line magnetic measurements data (please modify or correct if necessary):

www-group.slac.stanford.edu - /met/MagMeas/MAGDATA/LCLS-II/Dipole/2322/
--



3) Determine the main-coil connection polarity and mark the polarity near the magnet leads with clear “+” and “-” labels as shown below.

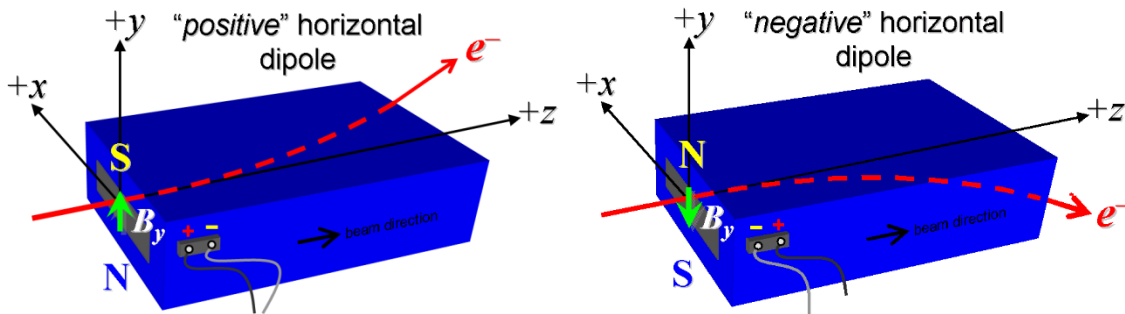


Figure 1. “Positive” polarity (bending electrons left) . “Negative” polarity (bending electrons right).

Main Coil Polarity marked from Fig. 1 is (P or N):	P
--	---

4) Mark the **trim** leads with clear “+” and “-” labels such that, with the trim supply outputting positive current, the trim coil *increases* the absolute value of the magnetic field established by the main coil. This will set the trim polarity as “positive” (P) for BCXCB0, BCXCB11, BCXCB14, BCXCB21, and BCXCB24 and “negative” (N) for BCXCB12, BCXCB13, BCXCB22, and BCXCB23 as described in LCLSII-2.4-PR-0064.

Trim coil polarity marked from Fig. 1 is (P or N):	P
--	---

5) Connect the magnet terminals, in the correct polarity as established above, to a bipolar power supply with maximum current $I \geq 12$ A. Measure pole tip field of the main at 12 A.

Pole Tip Field and Current	0.940 T at 12.00053 Amps
----------------------------	--------------------------

6) In an environment with ambient temperature of about 20°C (68°F), set the magnet’s main to 12 A for ~5 hours to warm it up (verify this is steady-state temp. and record value). Do not let the coil temperatures exceed 65 °C.

Ambient temperature (°C):	18.14
Final magnet top core surface temperature (°C):	23.73
Final magnet top coil surface temperature (°C):	29.04
Final magnet side bottom coil surface temperature (°C):	29.72



7) Standardize magnet using a three cycles, starting from zero to +12 A, then to -12 A, and finally back to zero, through three of these full cycles, and ending again at -12 A, all with a flat-top pause time (at each setting of -12 and +12 A) of 10 seconds. Use a cosine ramp rate of 2.0 A/sec and record the ramp rate used. The integrated field at 10.56 Amps should be close to 0.306 T-m.

Standardization complete (initials):	SDA
Ramp rate used (A/sec):	2 A/sec

8) Maintaining the cycle history, and with the trim coils still not powered, measure the length-integrated vertical dipole field, $\int B_y dl$, from -12 to +12 A in 1.0 A steps except between 12 and 10 and -10 and 12 amps where the step size should be 0.5 amps (31 'up' measurements with at least a 10-sec pause at each setting). Then, still maintaining the cycle history, measure $\int B_y dl$ back down from +12 A to -12 A in 1.0 A steps (30 'down' measurements).

Filename & run number of $\int B_y dl$ up & down data:	Wiredat.ru1, wireplt.ru1
--	--------------------------

9) Repeat the *bipolar* standardization of step #6 above with the trim coils still not powered, measure the length-integrated vertical dipole field, $\int B_y dl$, at $I_{main} = 0$.

Filename & run number of $\int B_y dl$ at $I_{main} = 0$:	Wiredat.ru2, wireplt.ru2
--	--------------------------

10) With the trim coil at zero, standardize the magnet as described above in step #6, then set the main coil at $I_{main} = 0$. Then measure $\int B_y dl$ as a function of **trim** coil current from 0 to -2 A in 0.2-A steps, including zero (11 'down' measurements), and again from -2 to +2 A in 0.2-A steps (20 'up' measurements). Then set the **trim** current to zero.

Filename & run # of $\int B_y dl$ trim data at $I_{main} = 0$:	Wiredat.ru3, wireplt.ru3
--	--------------------------

11) Run the best degauss procedure known using cycling of the main coil current (trim current at zero) and record the smallest final measured $|\int B_y dl|$ achievable and reproducible with $I_{main} = 0$. Please also finish the degauss procedure with a positive step, by setting the current in the positive direction to zero (*i.e.*, from $I_{main} < 0$ to $I_{main} = 0$). Record the degauss procedure applied (ramp rate, hold times, current sequence, etc). See file SRXSS Dipole Degauss Procedure.docx for more details.

De-Gauss procedure's mean $ \int B_y dl $ and Stdev (T-m):	0.000063 +/- 0.000358
Measurements used for mean and stdev (T-m):.	-0.000219, 0.000564, 0.000073, -0.000168
Pole Tip Field at Magnet Center	-0.45 G
Pole Tip Field at Magnet Z Center at Outer Pole Edge (Top of Chamfer)	-0.35 G
Ramp rate:	2 A/s
Hold time:	2 sec



Current sequence:	<pre>{0.0, 12.0000, -10.4400, 9.0828, -7.9020, 6.8748, -5.9811, 5.2035, -4.5271, 3.9385, - 3.4265, 2.9811, -2.5935, 2.2564, -1.9631, 1.7079, - 1.4858, 1.2927, -1.1246, 0.9784, -0.8512, 0.7406, - 0.6443, 0.5605, -0.4877, 0.4243, -0.3691, 0.3211, - 0.2794, 0.2431, -0.2115, 0.1840, -0.1601, 0.1393, - 0.1211, 0.1054, -0.0917, 0.0798, -0.0694, 0.0604, - 0.0525, 0.0457, -0.0398, 0.0346, -0.0301, 0.0262, - 0.0228, 0.0198, -0.0172, 0.0150, -0.0131, 0.0114, 0.0}</pre>
-------------------	---

12) With the degauss procedure finished, the trim coil still at zero, and without having changed the main coil current at all from its $I_{main} = 0$ setting after step #10 above, please vary the trim coil current from 0 to -2 A in 0.2-A steps, while measuring the length-integrated vertical dipole field, $\int B_y dl$, at each setting, including zero (11 'up' measurements), and again from -2 A to +2 A in 0.2-A steps (20 'down' measurements), and finally from +2 A to -2 A in 0.2-A steps (20 more 'up' measurements). *These field integral values will be quite small, so please **take care** to resolve the measurements at the level of <0.001 kG-m, if possible.*

Filename & run # of $\int B_y dl$ after degauss:	Wiredat.ru4, wireplt.ru4
Filename & run # of $\int B_y dl$ vs. trim after degauss:	Wiredat.ru5, wireplt.ru5

13) For all four dipoles (except as noted below), with stretched wire, and after re-standardization using the *bipolar* method of step #6, measure the length-integrated vertical field over a horizontal span of ± 10 mm at each 2-mm interval, at the following **main** and **trim** coil current settings.

- $I_{main} = +10.56$ A, and $I_{trim} = 0$ (all 4 magnets)
- $I_{main} = +12$ A, and $I_{trim} = 0$ (all 4 magnets)

Filename & run # of $\int B_y dl$ vs. x data at 10.56 A, 0 A:	Wirevsx.ru1, wirepltvsx.ru1
Filename & run # of $\int B_y dl$ vs. x data at 12 A, 0 A:	Wirevsx.ru2, wirepltvsx.ru2

14) **For the BCXCB0 magnet *only***, after *bipolar* standardization (step #6 above) measure the harmonics with a rotating coil with **main** coil at +10.56 A and then at +12 A, with **trim** at zero, Record probe designation, radius, and data file names:

Coil designation (text):	0.25DQB26
Coil radius (mm):	2.997
BCXCB0 harmonics filename:	See data in folder LCLS-II\Dipole\4590\hardat.ru8

15) **For the BCXCB0 magnet *only***, and at a **main** current of 10.56 A, with **trim** current at zero, measure the vertical magnetic fringe field component, B_y , at $x = y = 0$, as a function of the longitudinal beam-direction coordinate, z (from -10 cm to +20 cm in 0.5-cm steps, where $z = 0$ is defined at the iron edge), at *one* end of this one magnet. Please also measure the background field at $z = +20$ cm with magnet switched off (separate file).

Filename of B_y vs. z data for BCXCB0 exit edge:	LCLS-II\Dipole\4590\ bhvszdat.ru9
Background filename of B_y ($z = 20$ cm), magnet OFF:	LCLS-II\Dipole\4590\ bhvszdat.r10

16) Upon completion of tests, send data link to Mark Woodley who will produce a data analysis file. Place data analysis file in magnetic measurements data directory

Magnet data accepted and data analysis file produced	SDA
--	-----

Enter URL of on-line magnetic measurements analysis data :

https://www-group.slac.stanford.edu/met/MagMeas/MAGDATA/LCLS-II/Dipole/2322/BCXCBX14.pptx
