

This is a type 4 corrector just after the current was ramped down because the top coil reached 68 deg C.

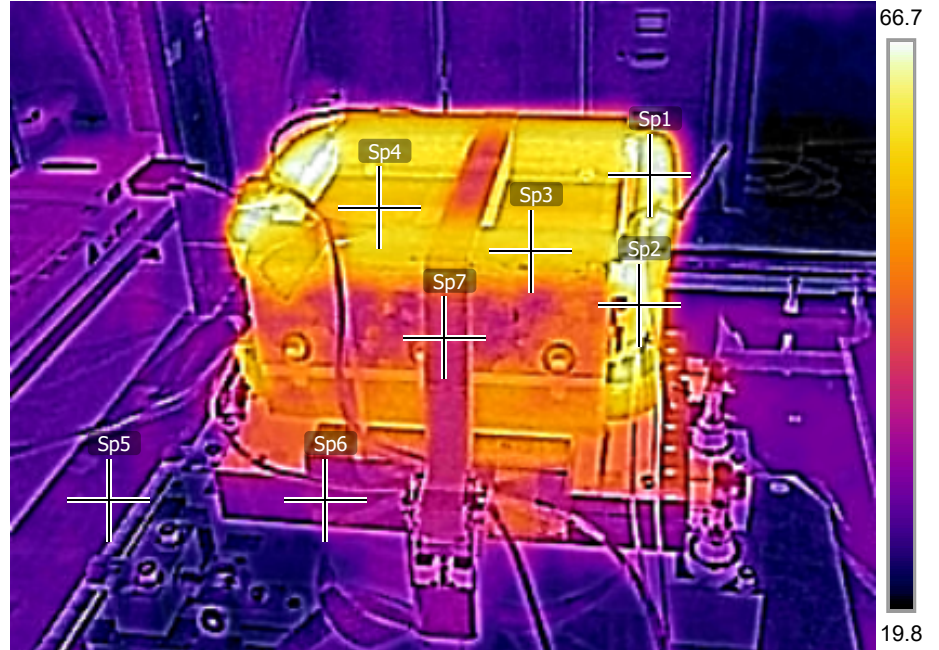
Measurements

Sp1	64.0 °C
Sp2	61.4 °C
Sp3	54.6 °C
Sp4	53.0 °C
Sp5	24.5 °C
Sp6	27.6 °C
Sp7	33.4 °C

Parameters

Emissivity	0.95
Refl. temp.	20 °C

4/1/2021 4:18:28 PM

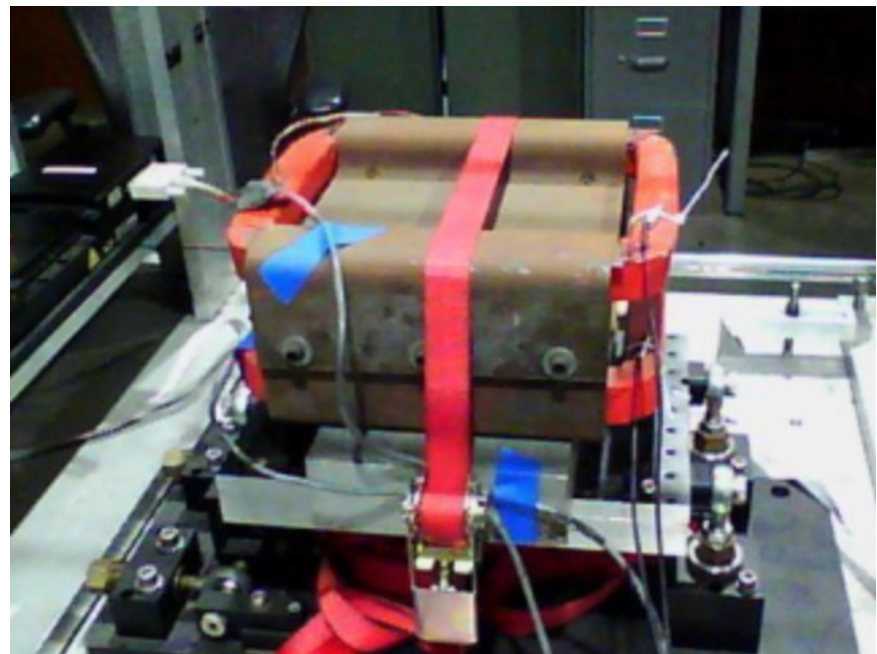


FLIR0022.jpg

FLIR C3

720149250

4/1/2021 4:18:28 PM



FLIR0022.jpg

FLIR C3

720149250

This is a type 4 corrector just after the current was ramped down because the top coil reached 68 deg C.

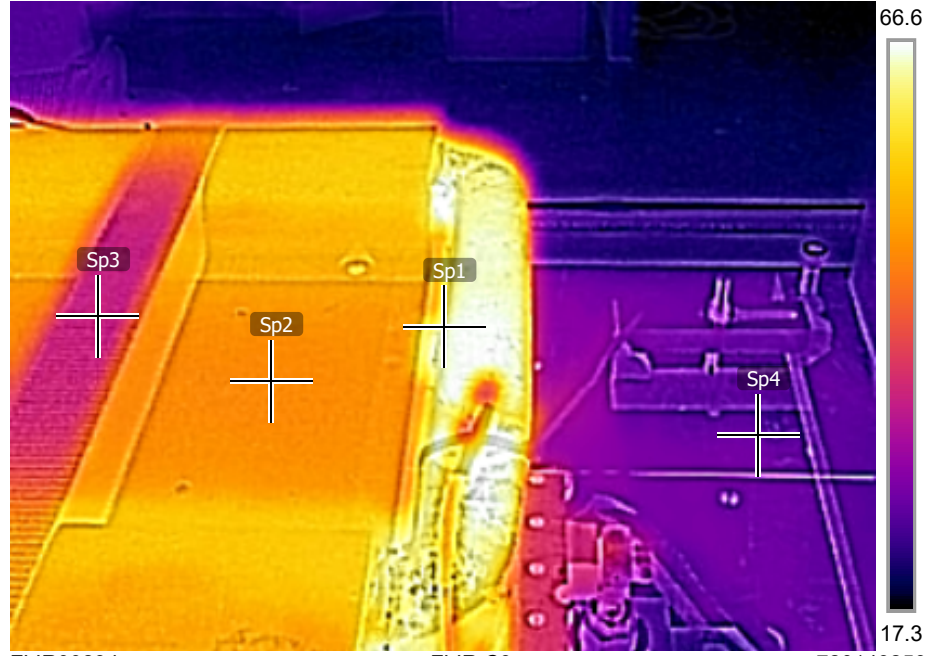
Measurements

Sp1	64.2 °C
Sp2	51.2 °C
Sp3	34.7 °C
Sp4	23.2 °C

Parameters

Emissivity	0.95
Refl. temp.	20 °C

4/1/2021 4:18:51 PM

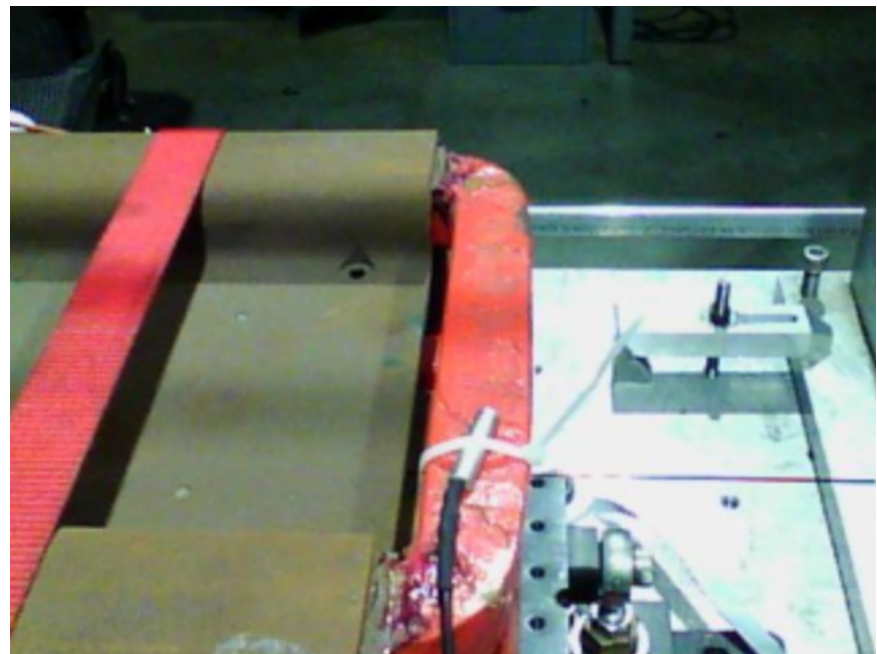


FLIR0023.jpg

FLIR C3

720149250

4/1/2021 4:18:51 PM



FLIR0023.jpg

FLIR C3

720149250

This is a type 4 corrector just after the current was ramped down because the top coil reached 68 deg C.

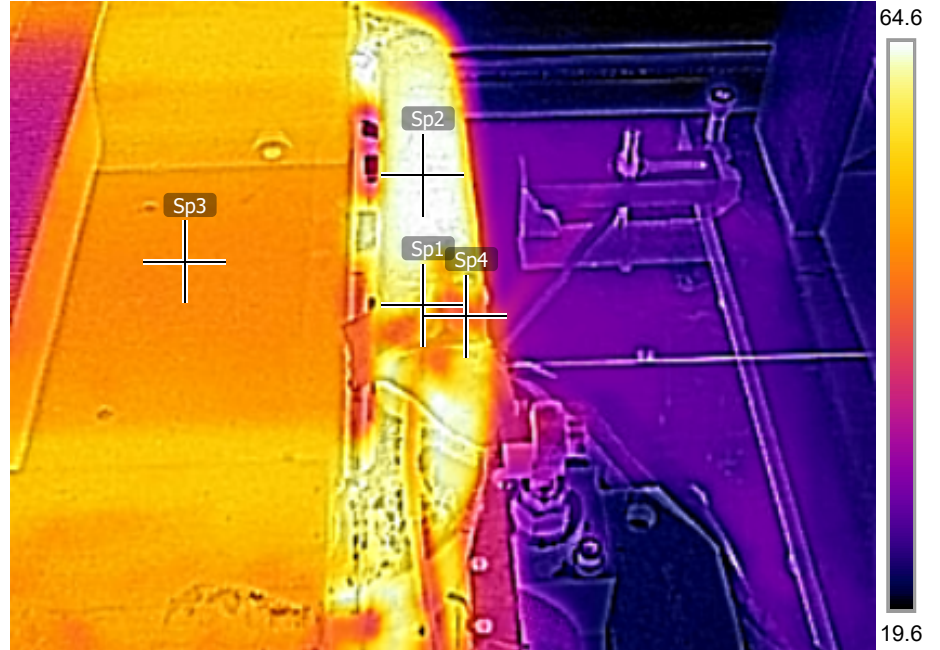
Measurements

Sp1	56.4 °C
Sp2	64.7 °C
Sp3	51.6 °C
Sp4	48.6 °C

Parameters

Emissivity	0.95
Refl. temp.	20 °C

4/1/2021 4:20:19 PM

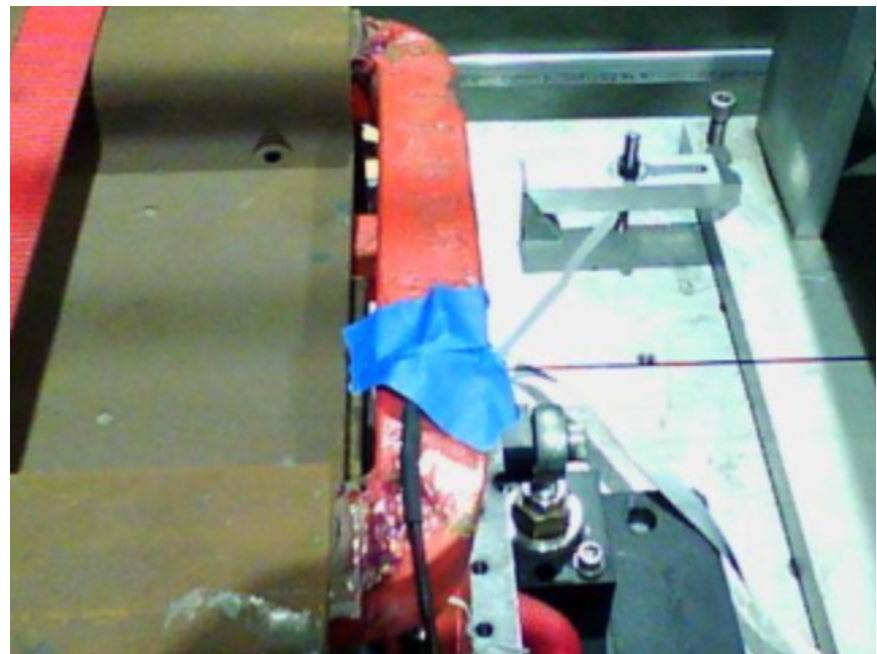


FLIR0024.jpg

FLIR C3

720149250

4/1/2021 4:20:19 PM



FLIR0024.jpg

FLIR C3

720149250