

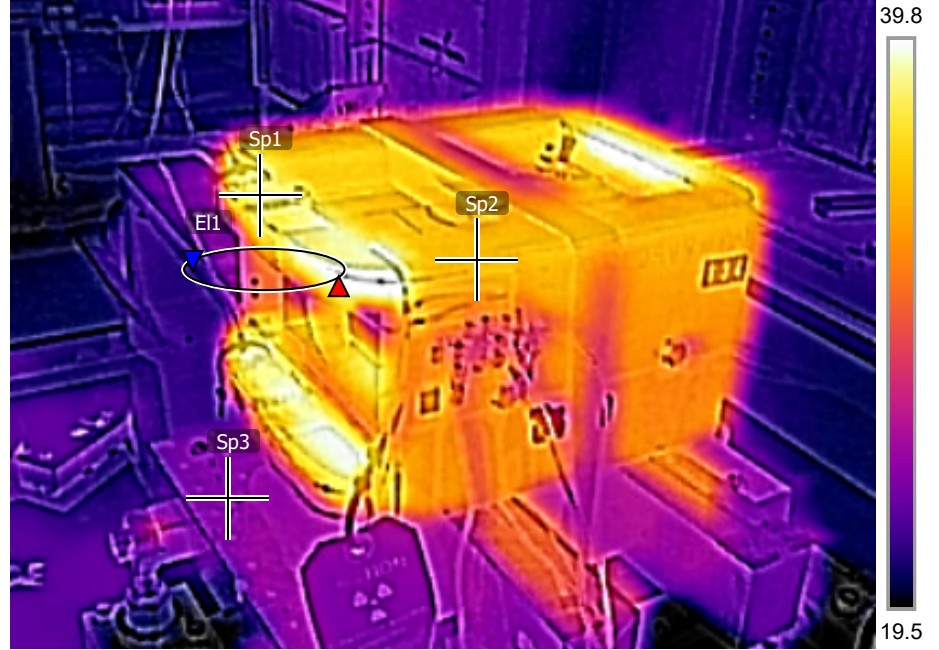
Measurements

El1	Max	40.1 °C
	Min	20.3 °C
	Average	28.5 °C
Sp1		37.2 °C
Sp2		32.9 °C
Sp3		22.1 °C

Parameters

Emissivity	0.95
Refl. temp.	20 °C

5/19/2021 4:35:17 PM

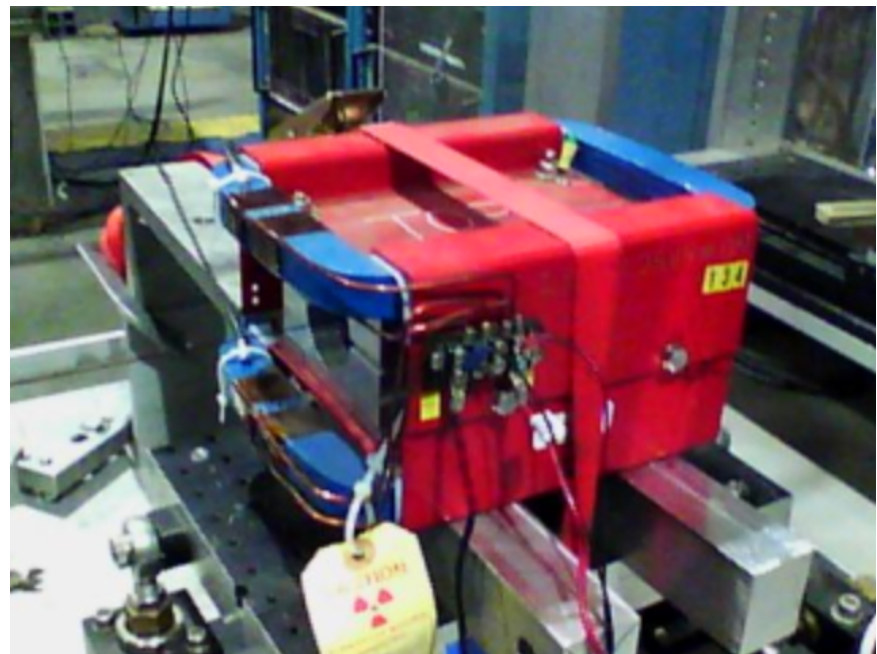


FLIR0030.jpg

FLIR C3

720149250

5/19/2021 4:35:17 PM



FLIR0030.jpg

FLIR C3

720149250