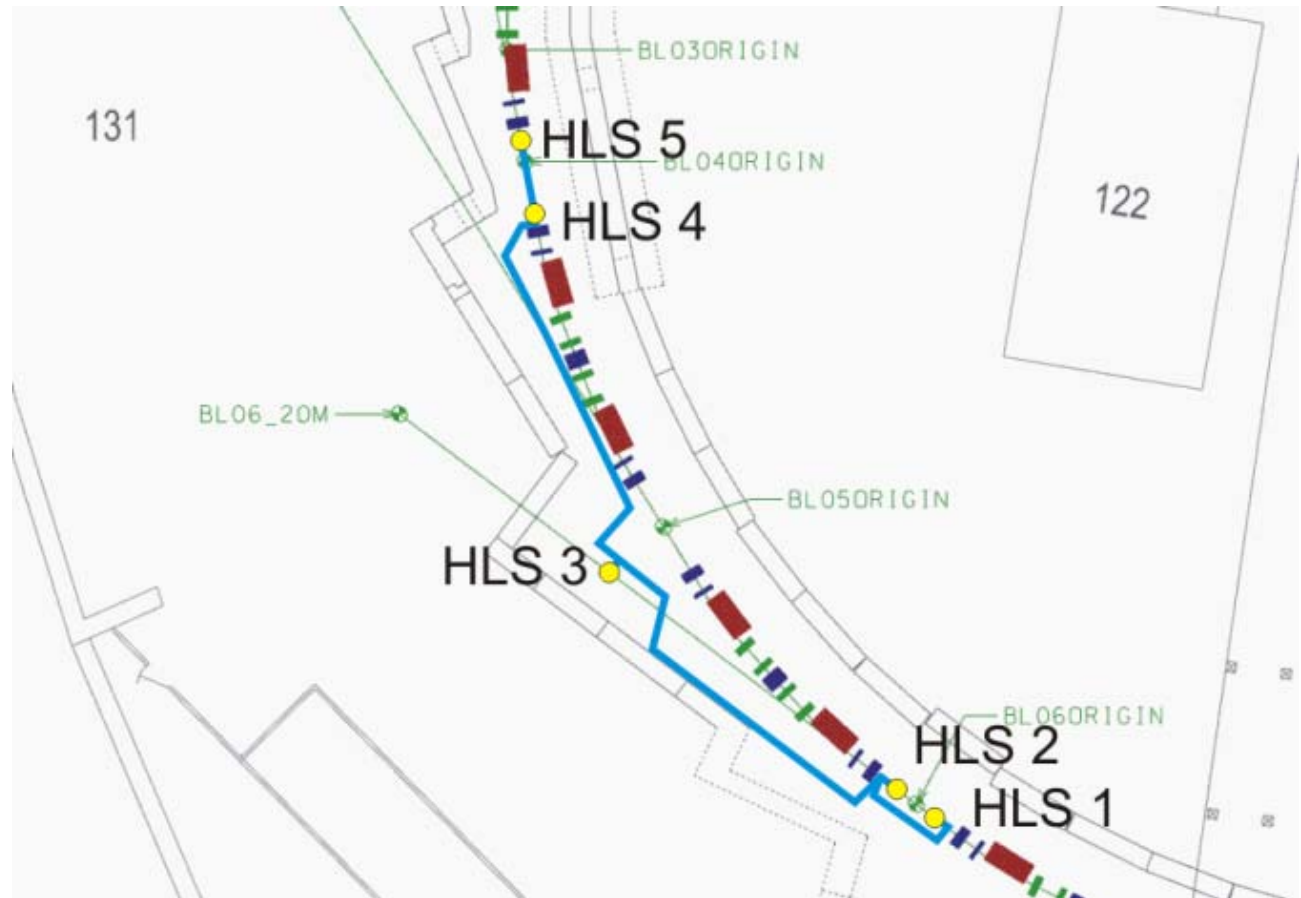


# HLS vs. Temperature Correlations in SPEAR3

March 2007



Georg Gassner

AEG

Metrology Department

Stanford Linear Accelerator Center

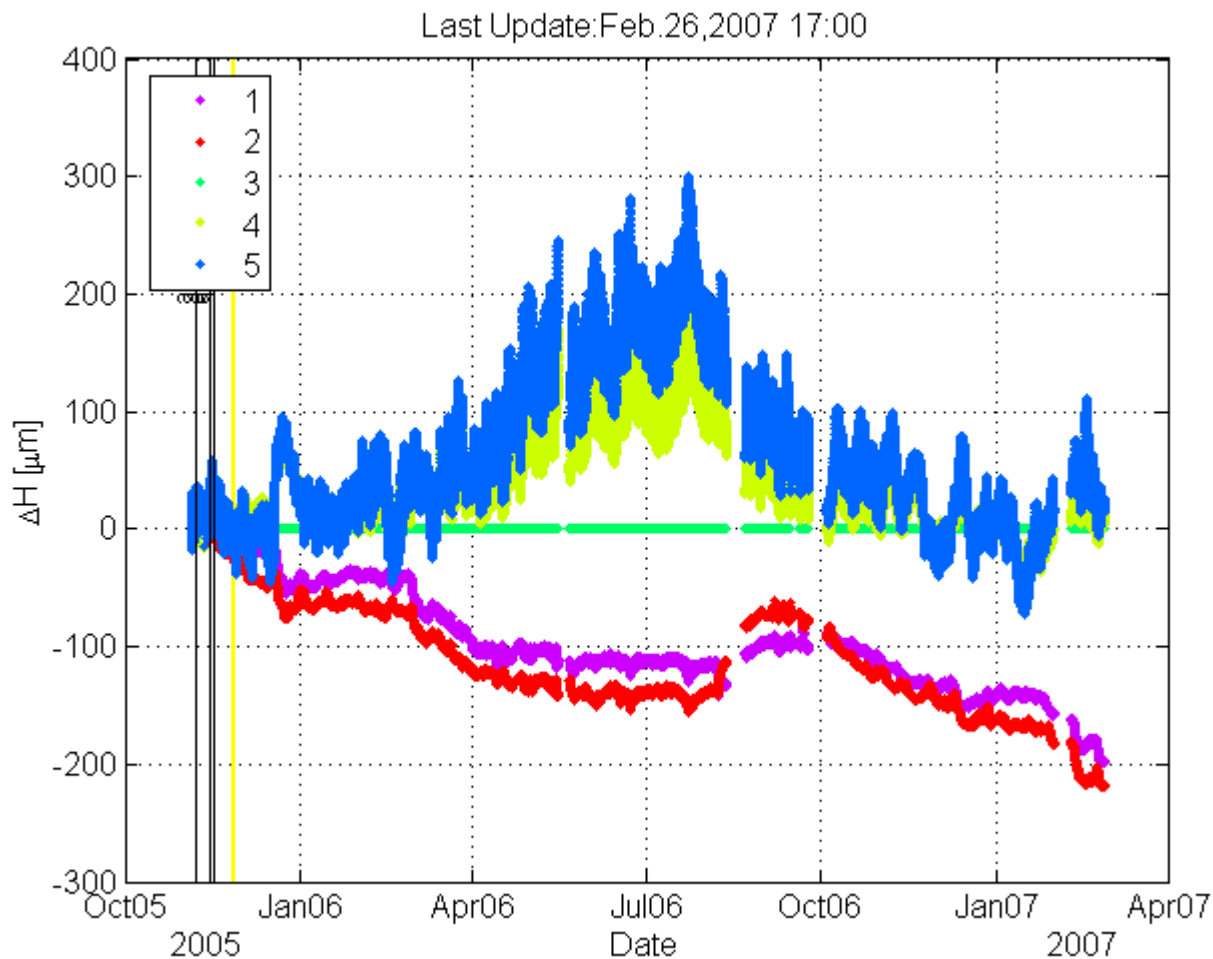


Stanford Linear Accelerator Center

SLAC, March 2007  
GGL 1

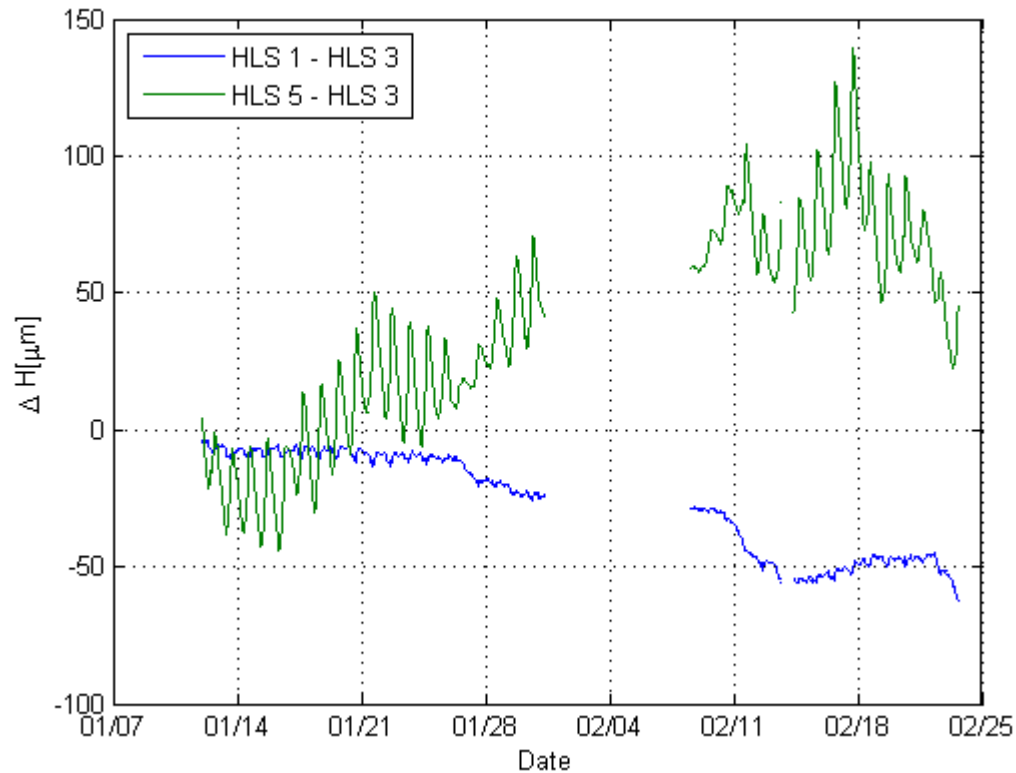
# HLS results (1)

- One year of data



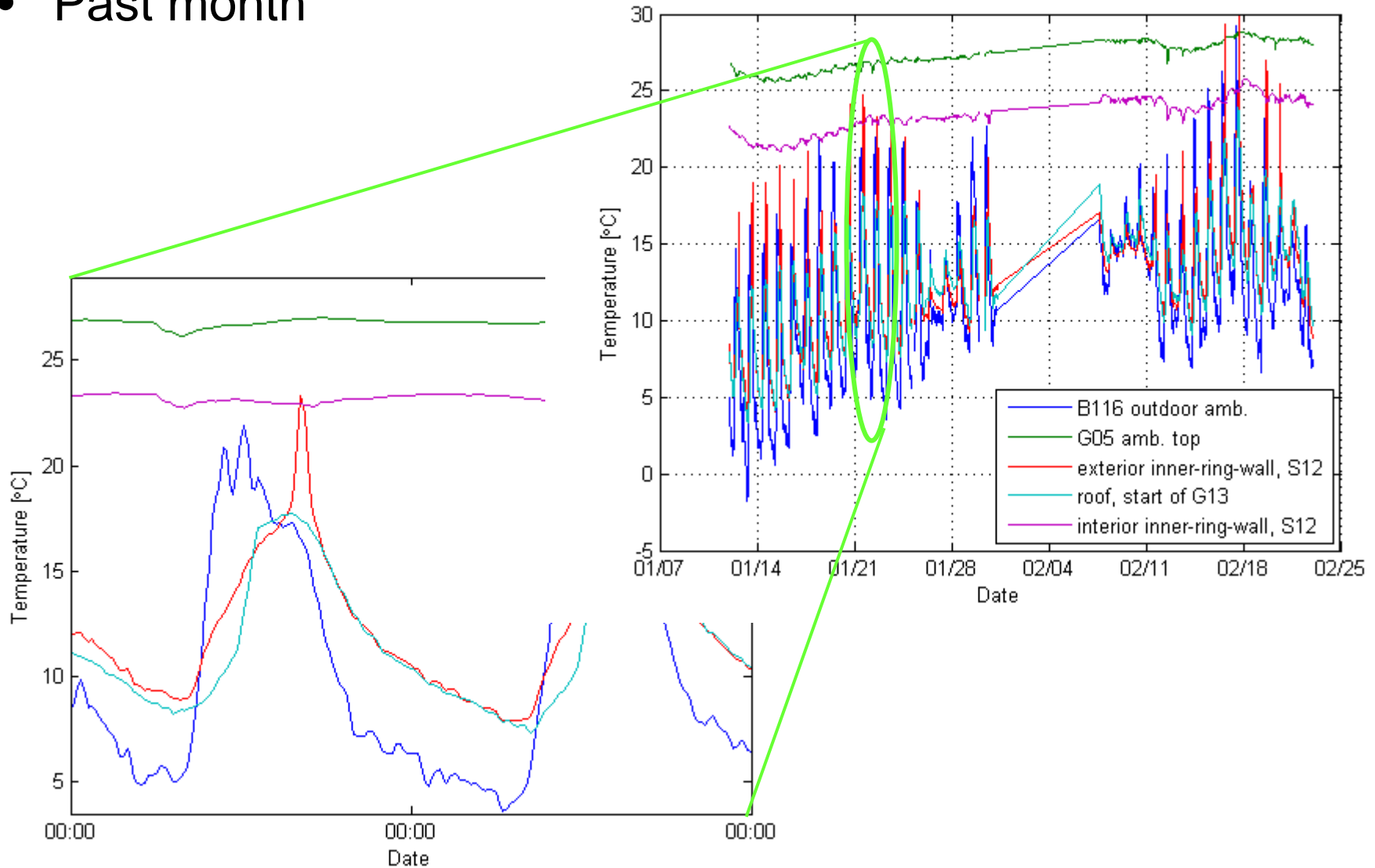
# HLS results (2)

- Past month



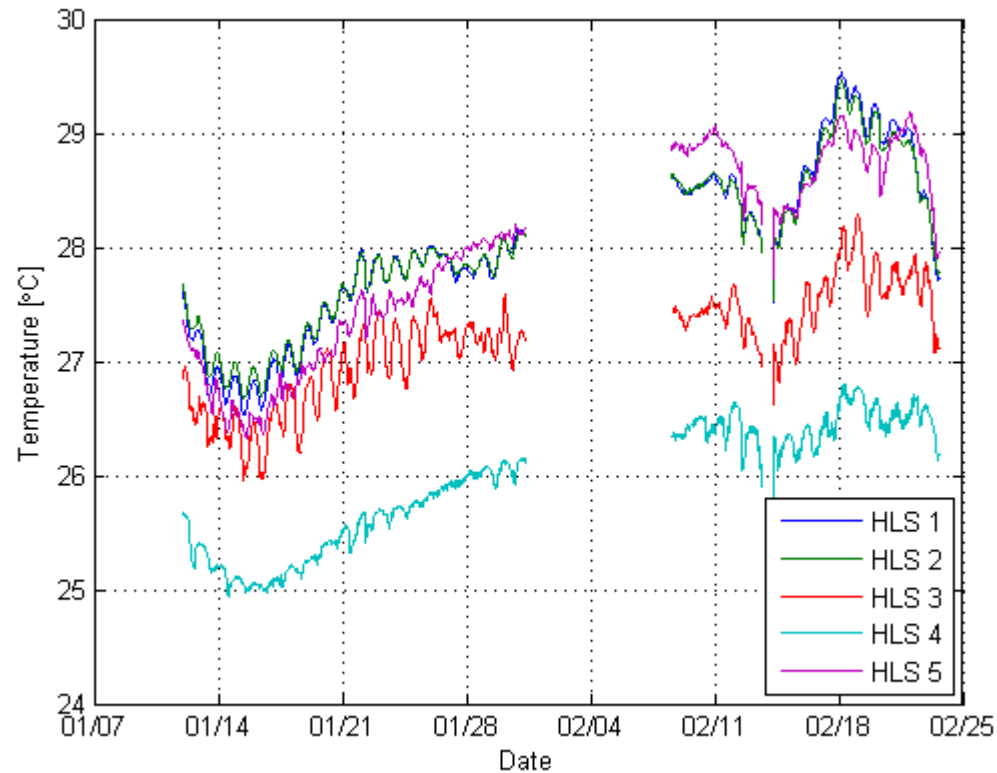
# Temperature measurements – SPEAR3 sensors

- Past month



# Temperature measurements – HLS temperature Sensors

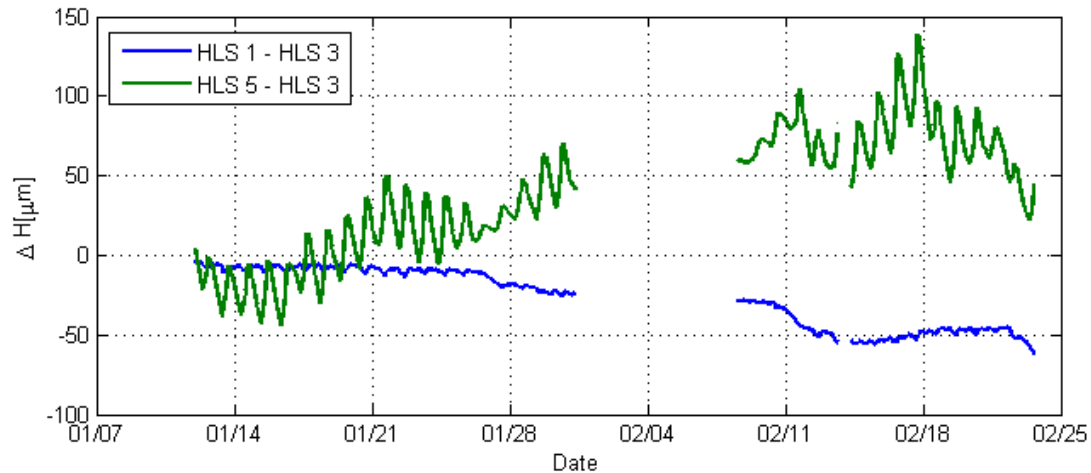
- Past month



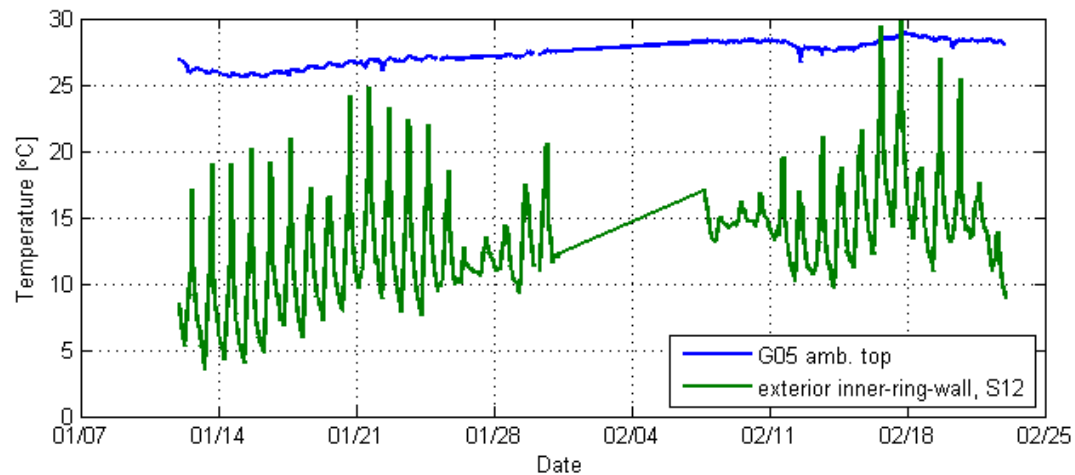
# Temperature measurements vs. HLS readings

- Past month

## HLS Sensor Readings



## Temperature Sensor Readings



# Correlations of Temperature Vs. Sensor Readings

- Correlation between **external temperature** and floor movement is >>
- Correlation between **tunnel temperature** and floor movement is <<

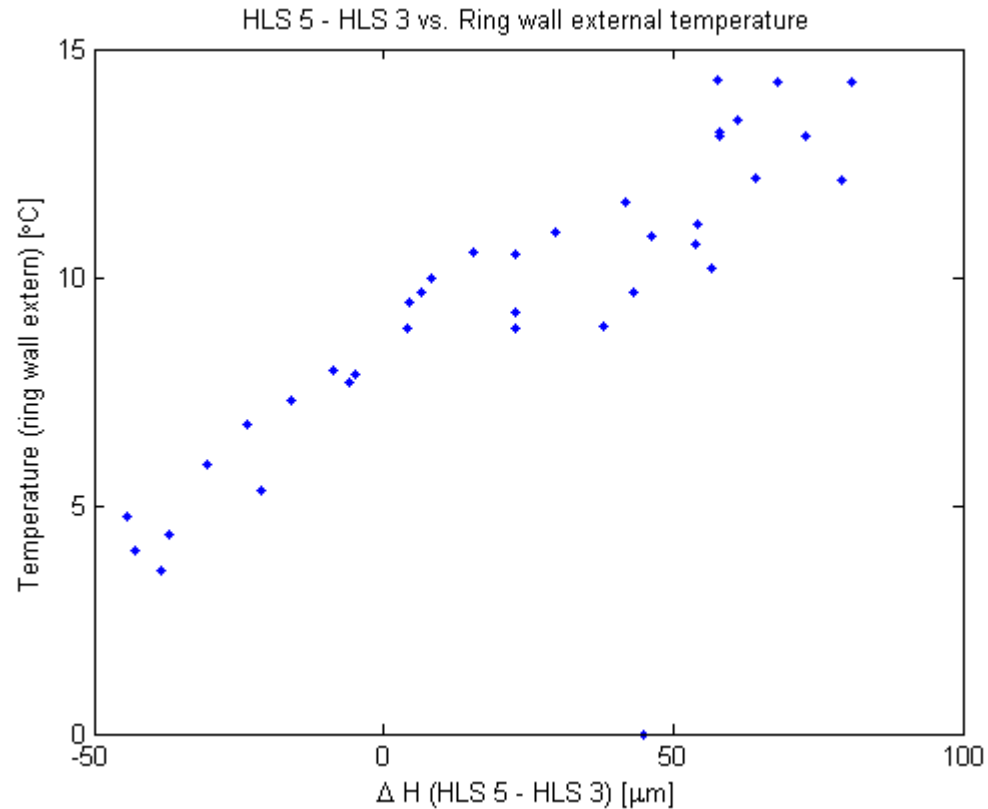
|           | HLS1-HLS3 | HLS5-HLS3 | B116  | G05 intern | Ring wall extern | Roof  | Ring wall Intern |
|-----------|-----------|-----------|-------|------------|------------------|-------|------------------|
| HLS1-HLS3 | 1.00      | -0.82     | -0.58 | 0.03       | -0.46            | -0.46 | -0.02            |
| HLS5-HLS3 | -0.82     | 1.00      | 0.88  | 0.09       | 0.78             | 0.76  | 0.16             |

- Correlation between sensor temperature and floor movement is >>

|           | HLS1-HLS3 | HLS5-HLS3 | Temp HLS1 | Temp HLS2 | Temp HLS3 | Temp HLS4 | Temp HLS5 |
|-----------|-----------|-----------|-----------|-----------|-----------|-----------|-----------|
| HLS1-HLS3 | 1.00      | 0.82      | 0.73      | 0.72      | 0.68      | 0.80      | 0.77      |
| HLS5-HLS3 | -0.82     | 1.00      | 0.93      | 0.93      | 0.88      | 0.92      | 0.96      |

# Example for Correlation

- Example for correlation





# Correlations of Daily Changes

- Correlation between **external temperature variations** and floor movement variation
- Correlation between **tunnel temperature variations** and floor movement

|           | HLS1-HLS3 | HLS5-HLS3 | B116 | G05 intern | Ring wall extern | Roof | Ring wall Intern |
|-----------|-----------|-----------|------|------------|------------------|------|------------------|
| HLS1-HLS3 | 1.00      | 0.27      | 0.56 | 0.53       | 0.59             | 0.64 | 0.48             |
| HLS5-HLS3 | 0.27      | 1.00      | 0.78 | 0.80       | 0.74             | 0.53 | 0.73             |

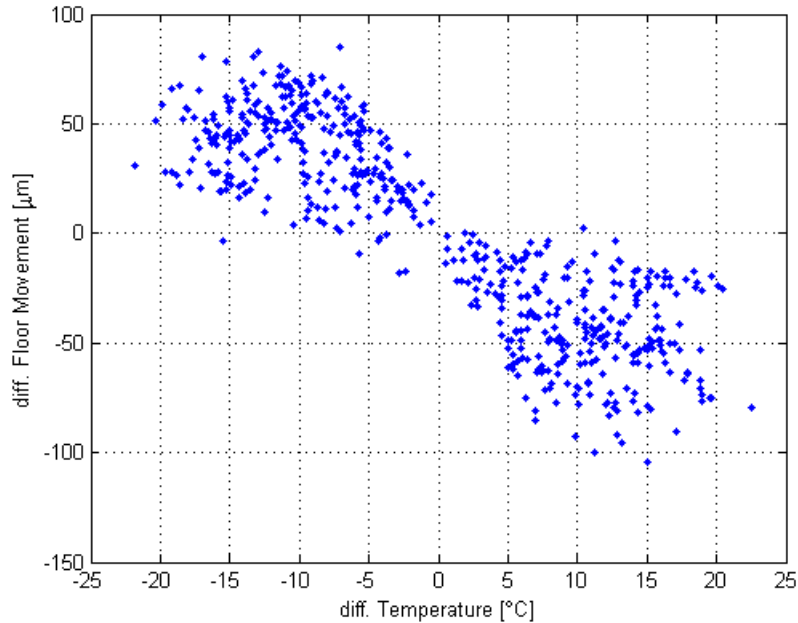
- Correlation between sensor temperature variations and floor movement var. is <<

|           | HLS1-HLS3 | HLS5-HLS3 | Temp HLS1 | Temp HLS2 | Temp HLS3 | Temp HLS4 | Temp HLS5 |
|-----------|-----------|-----------|-----------|-----------|-----------|-----------|-----------|
| HLS1-HLS3 | 1.00      | 0.27      | 0.24      | -0.52     | -0.19     | -0.20     | -0.51     |
| HLS5-HLS3 | 0.27      | 1.00      | 0.59      | 0.25      | 0.34      | 0.31      | -0.22     |

# Results for one year of Data

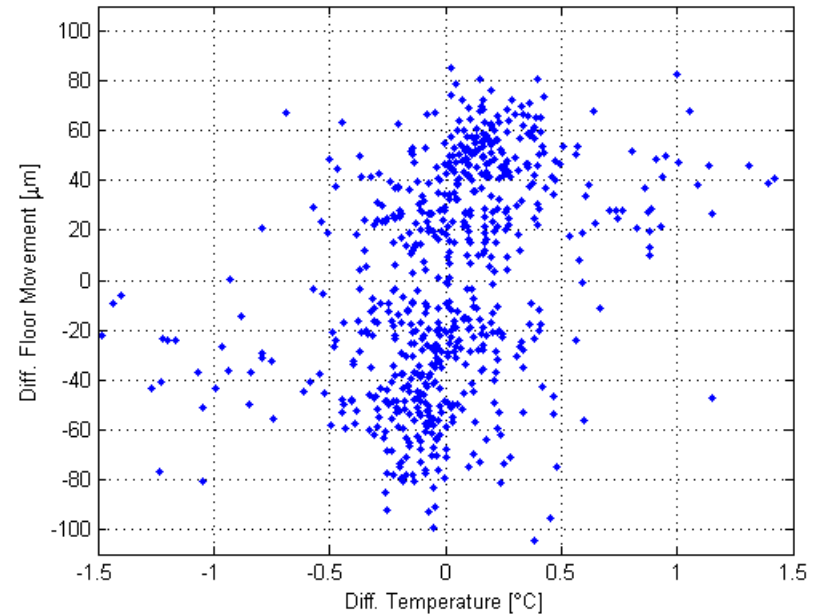
Correlation between temperature in Bldg 116 and floor movement

Corrcoef.: 0.87



Correlation between temperature in Tunnel (G05 intern) and floor movement

Corrcoef.: 0.2



# Summary

- The data suggest that long term movement is correlated to the HLS sensor temperature -> Temperature of the tunnel floor
- The one year data analysis suggests that the external temperature is the main factor for short term floor movement not the internal temperature of the tunnel. Even though this months data does not exclude the internal temperature of the tunnel as the source for daily floor movement.