



SABER Overview (AEG Perspective)

from Status Report on the Alignment Activities at SLAC

LeCocq et al. IWAA06

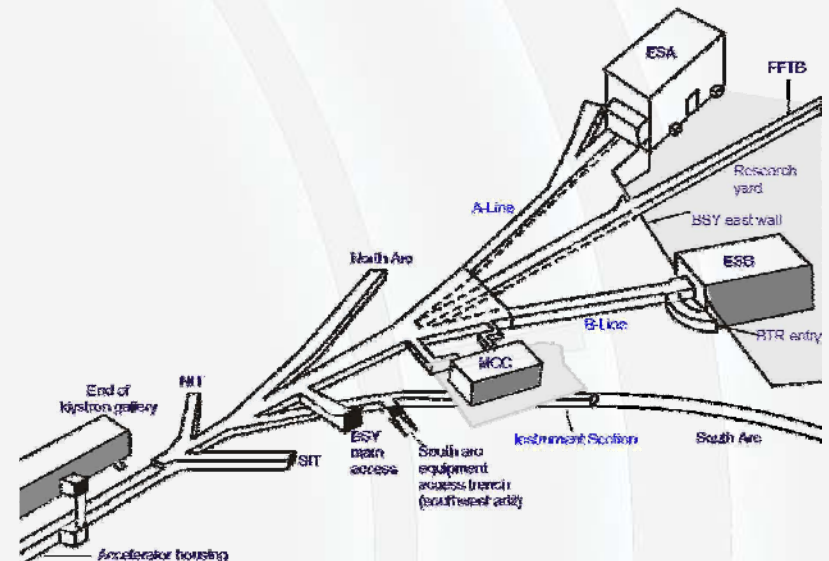
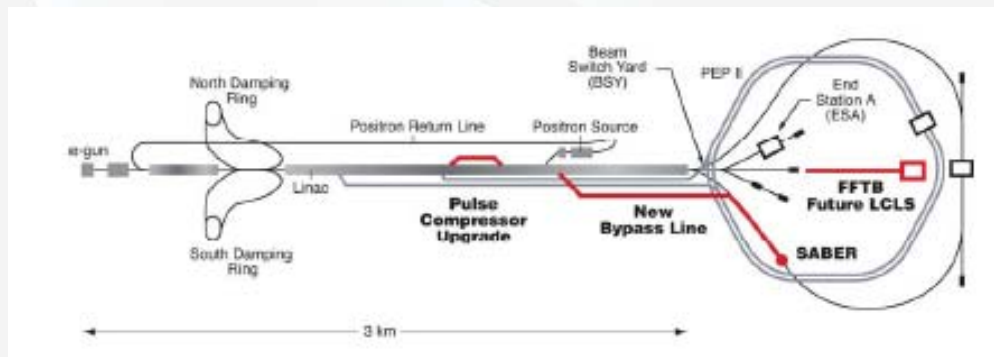
The Stanford Linear Accelerator Center is operated by Stanford University for the U.S. Department of Energy.



SABER

South Arc Beam Experimental Region

- SABER is a high energy electron and positron beam line intended as a replacement for FFTB.
- SABER is designed in 3 steps:
 - An electron/positron compressor in linac sector 10
 - A bypass line (linac sectors 20-30)
 - A 70 m long straight section of the south arc of SLC (Instrument Section)



09-26-06

from SLAC Report

IWAA 2006, 2



Tunnel Access



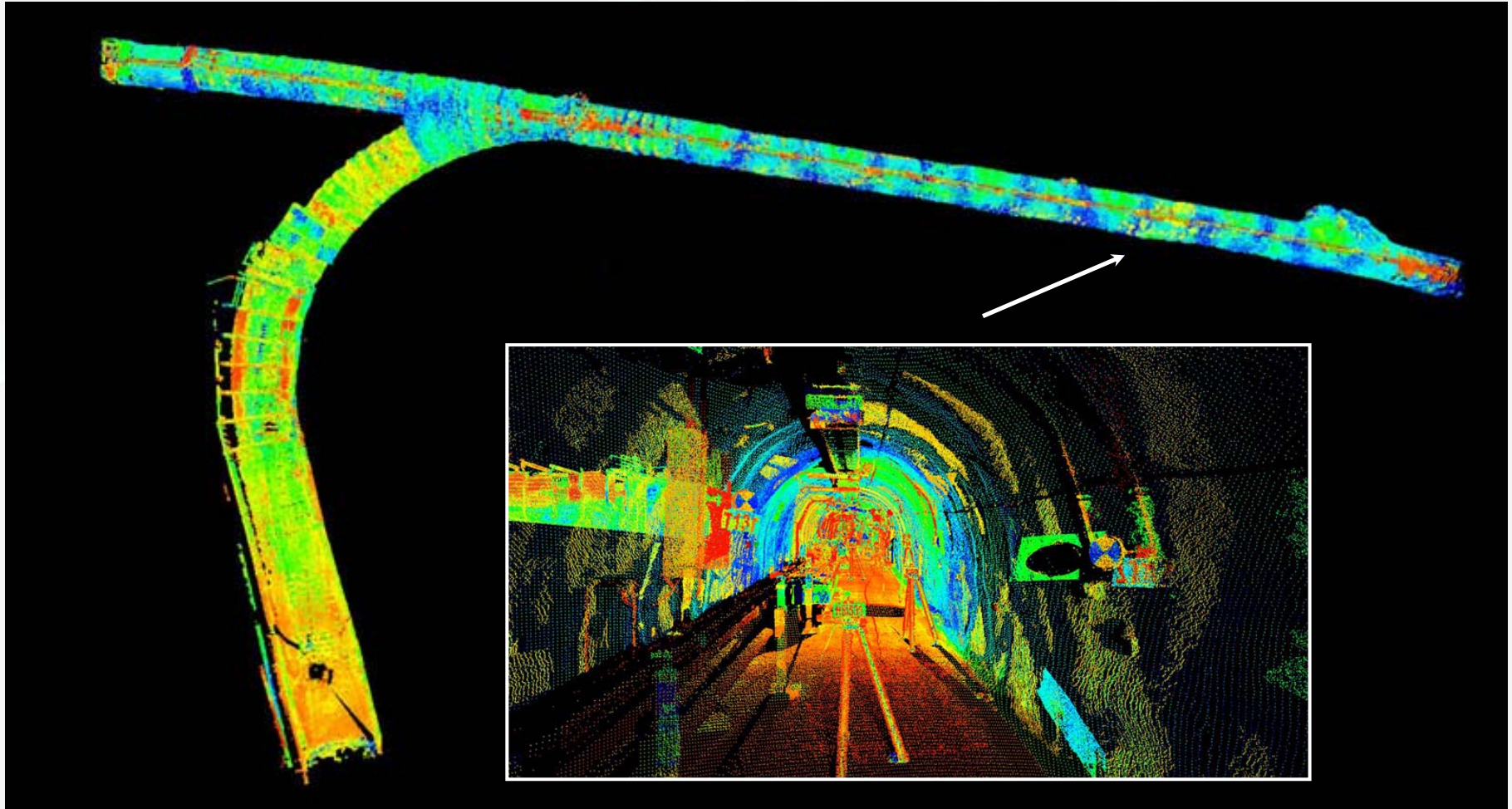
09-26-06

from SLAC Report

IWAA 2006, 3



SABER As-Built Survey



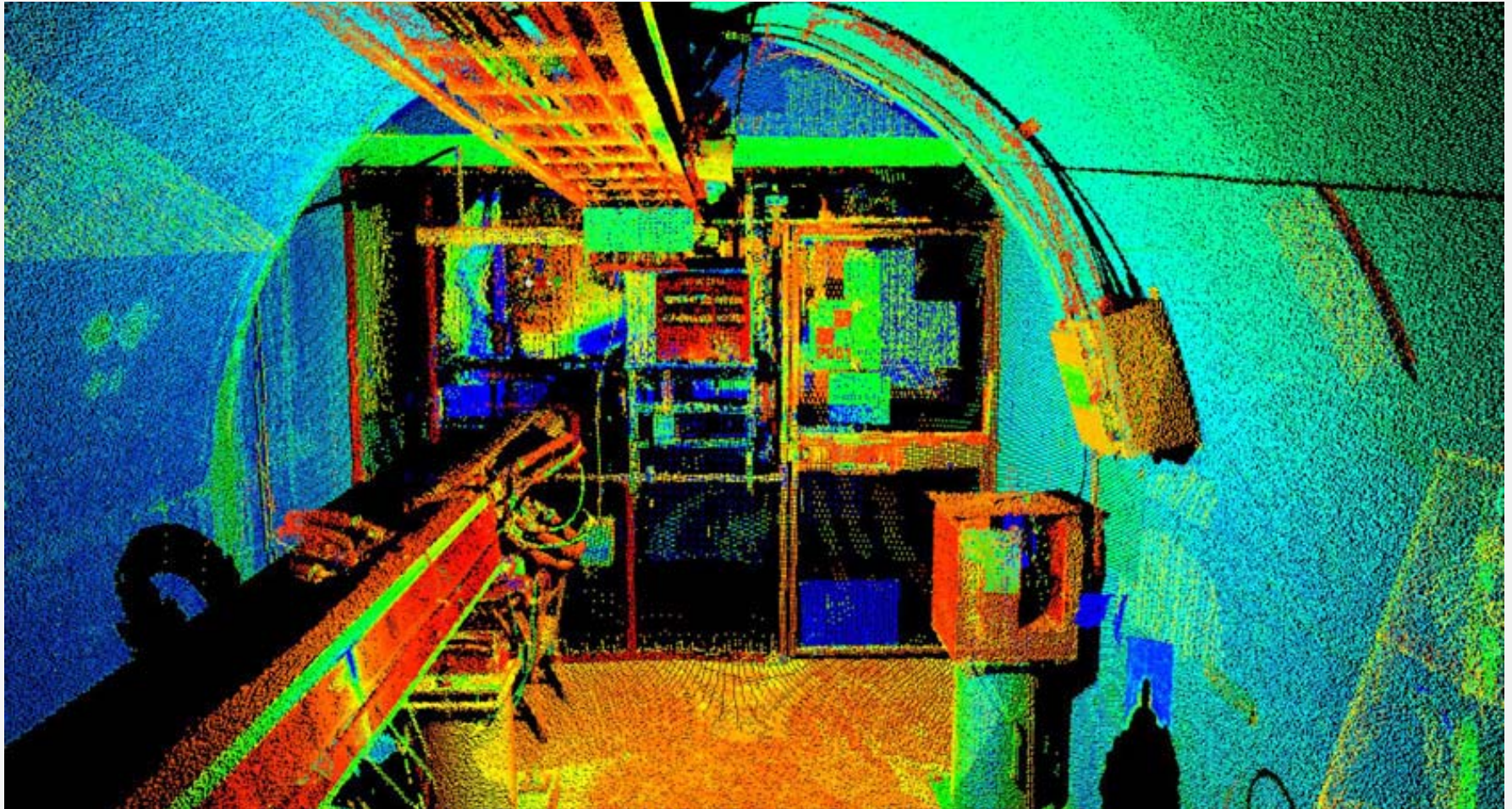
09-26-06

from SLAC Report

IWAA 2006, 4



Laser Scan – BSY Gate



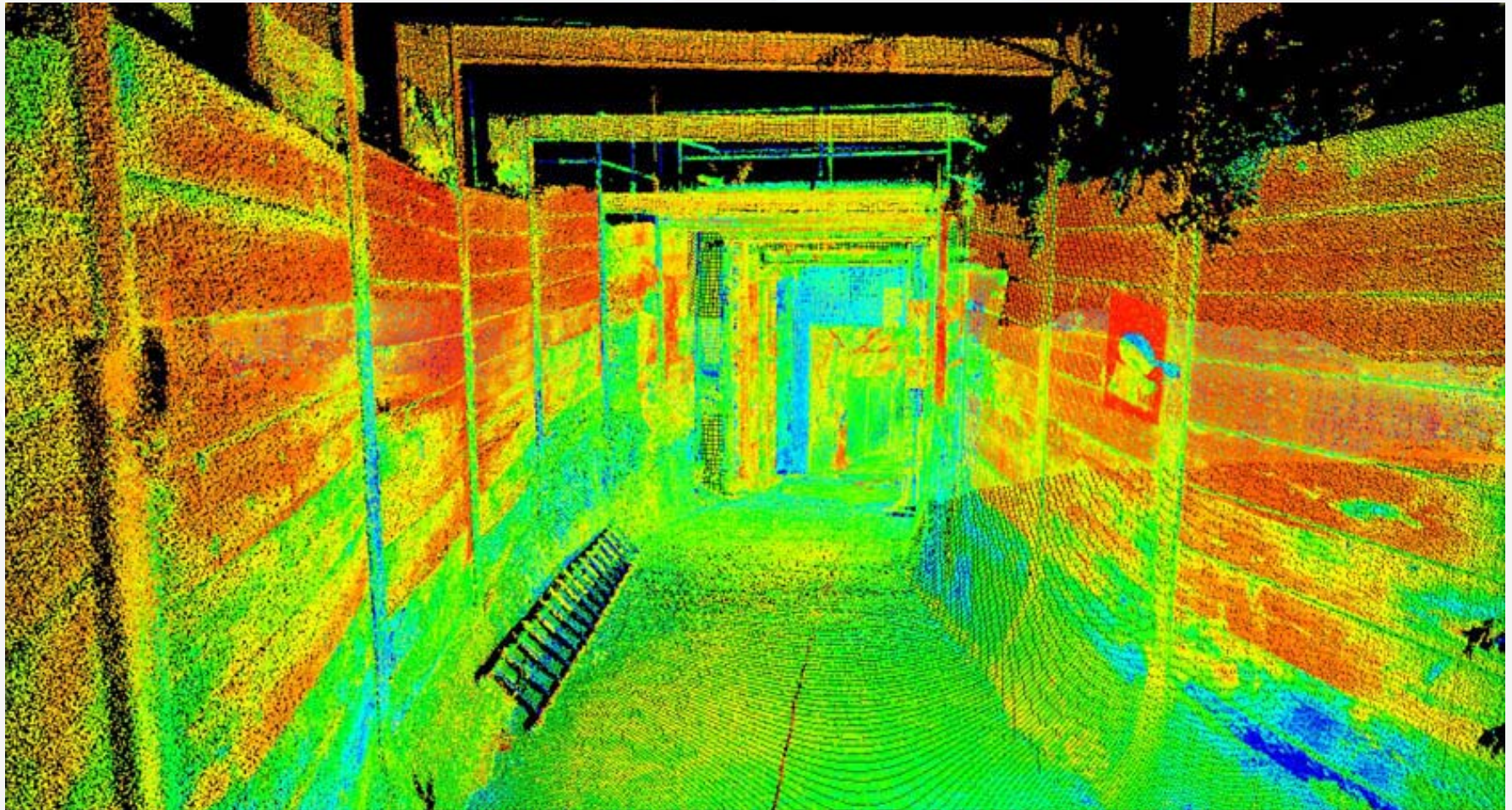
09-26-06

from SLAC Report

IWAA 2006, 5



Laser Scan – SABER Access



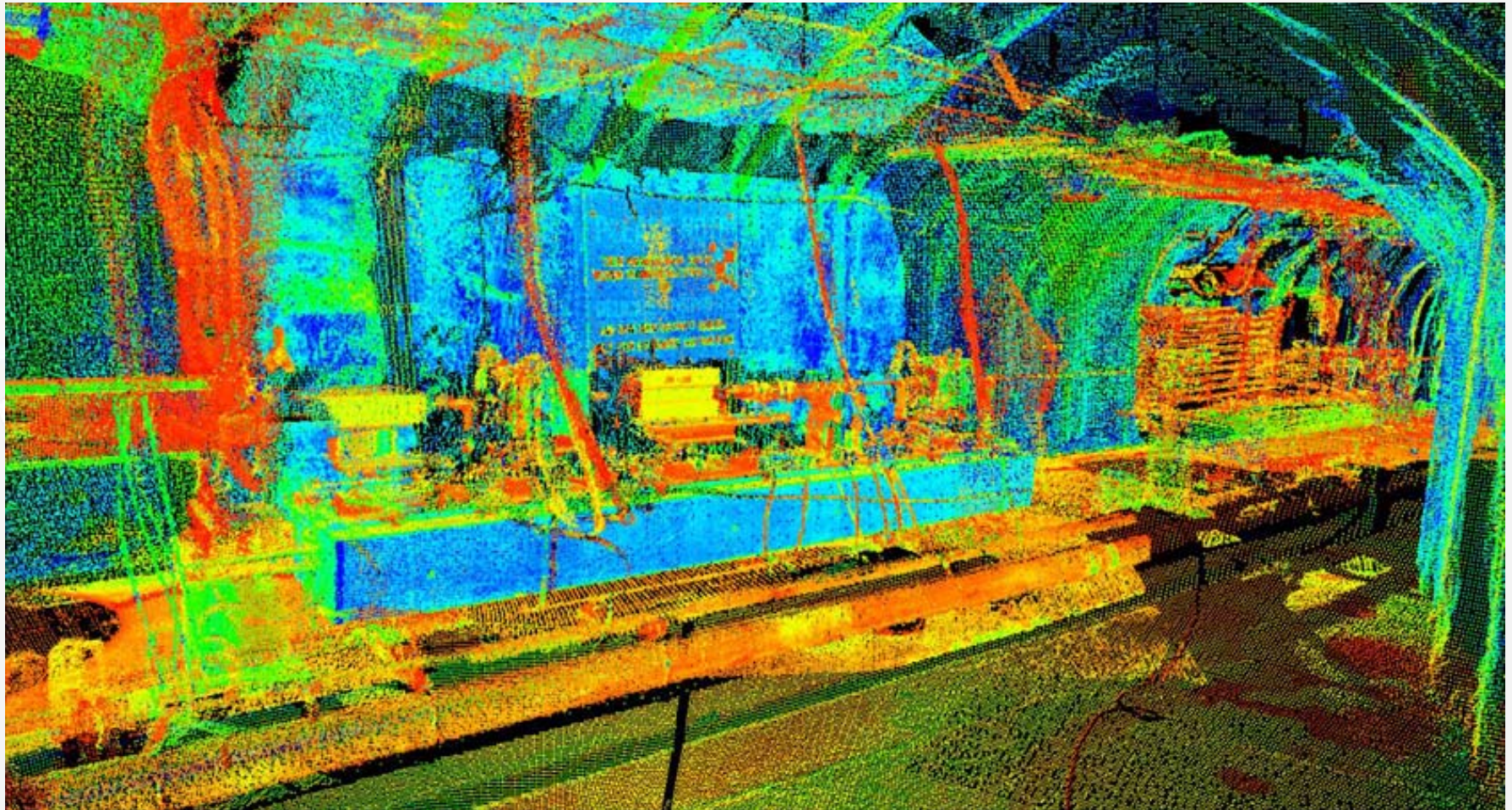
09-26-06

from SLAC Report

IWAA 2006, 6



Laser Scan – Magnet / Girders



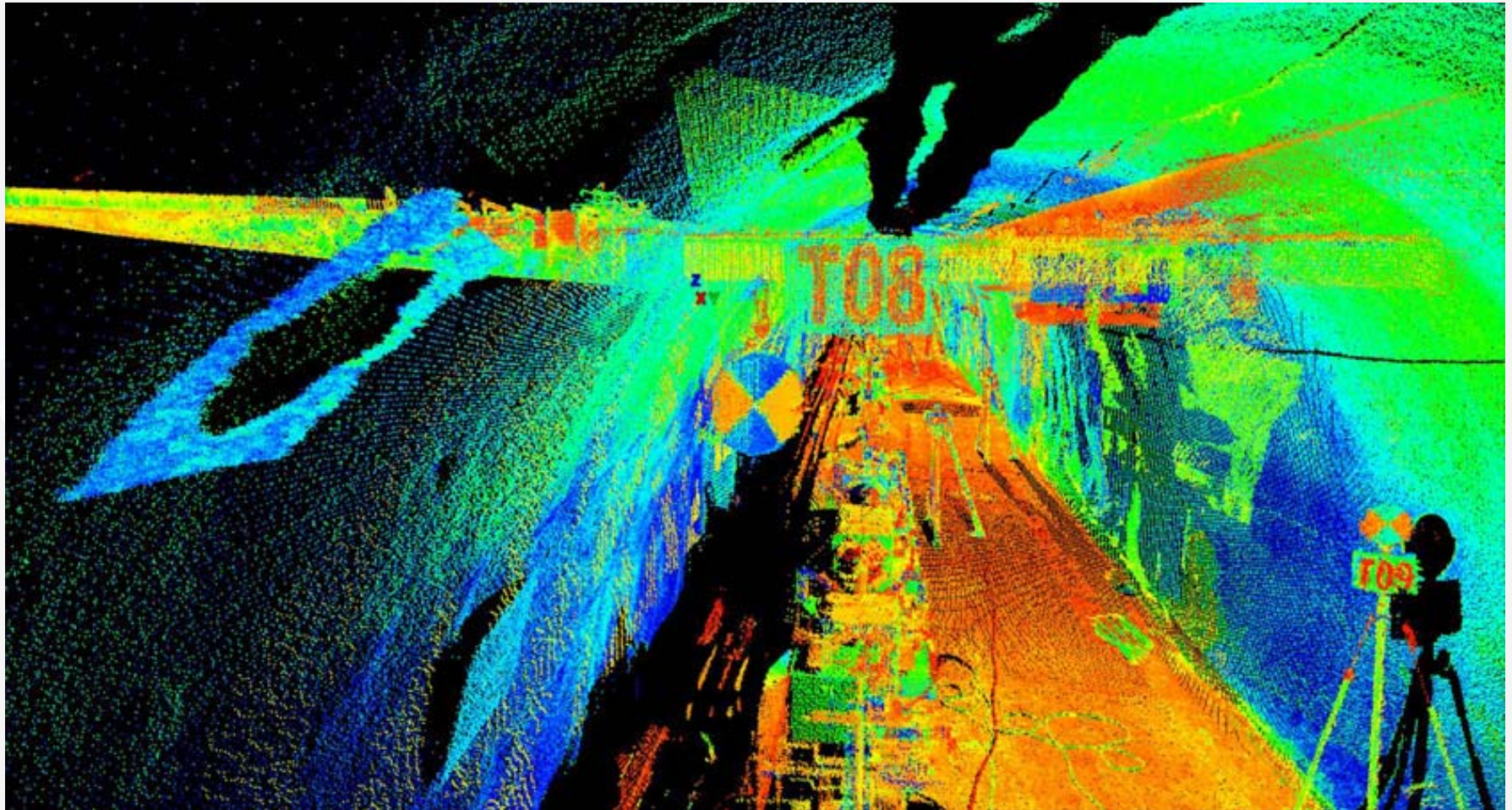
09-26-06

from SLAC Report

IWAA 2006, 7



Laser Scan - Targets



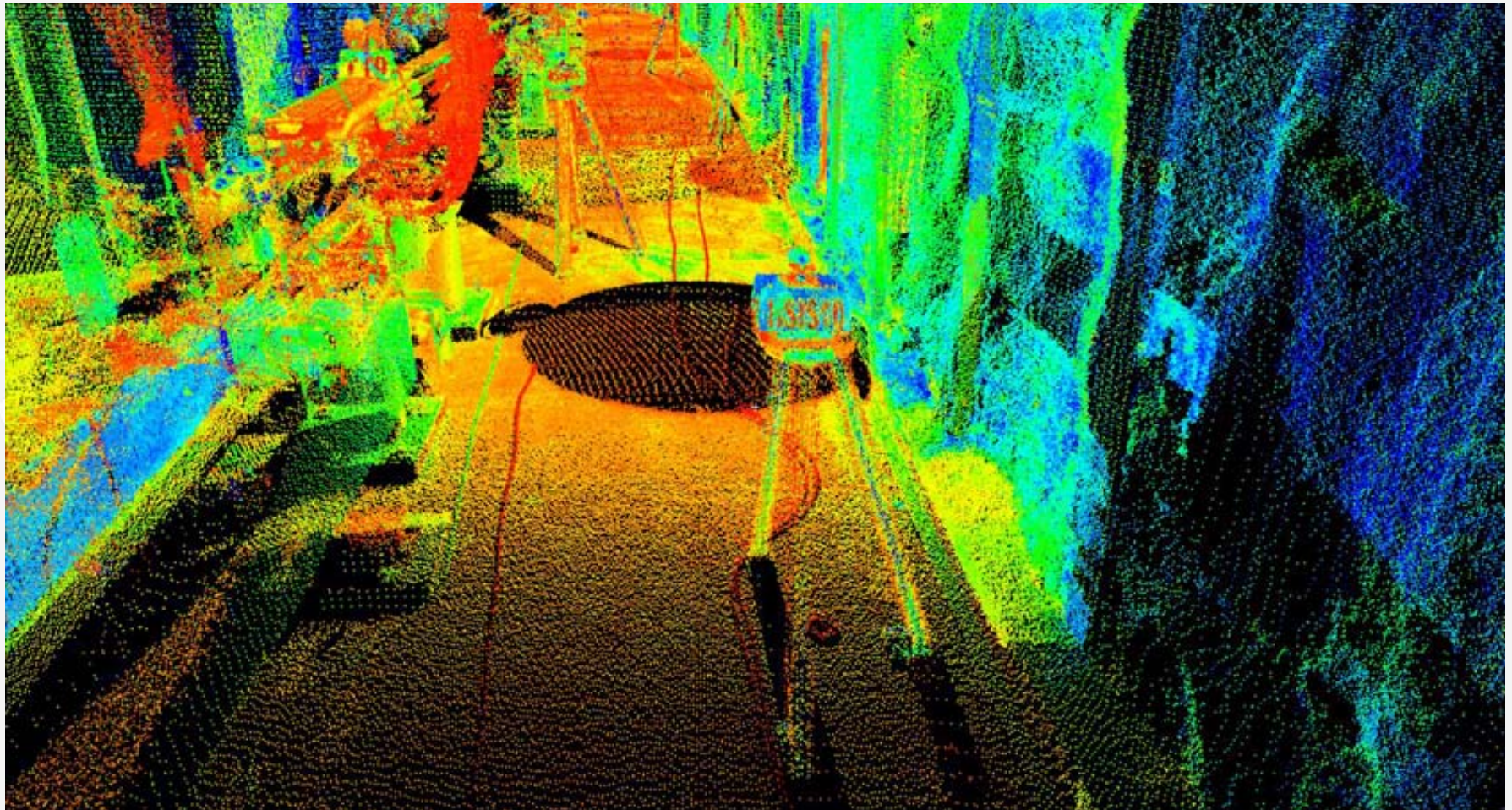
09-26-06

from SLAC Report

IWAA 2006, 8



Laser Scan - Tripods



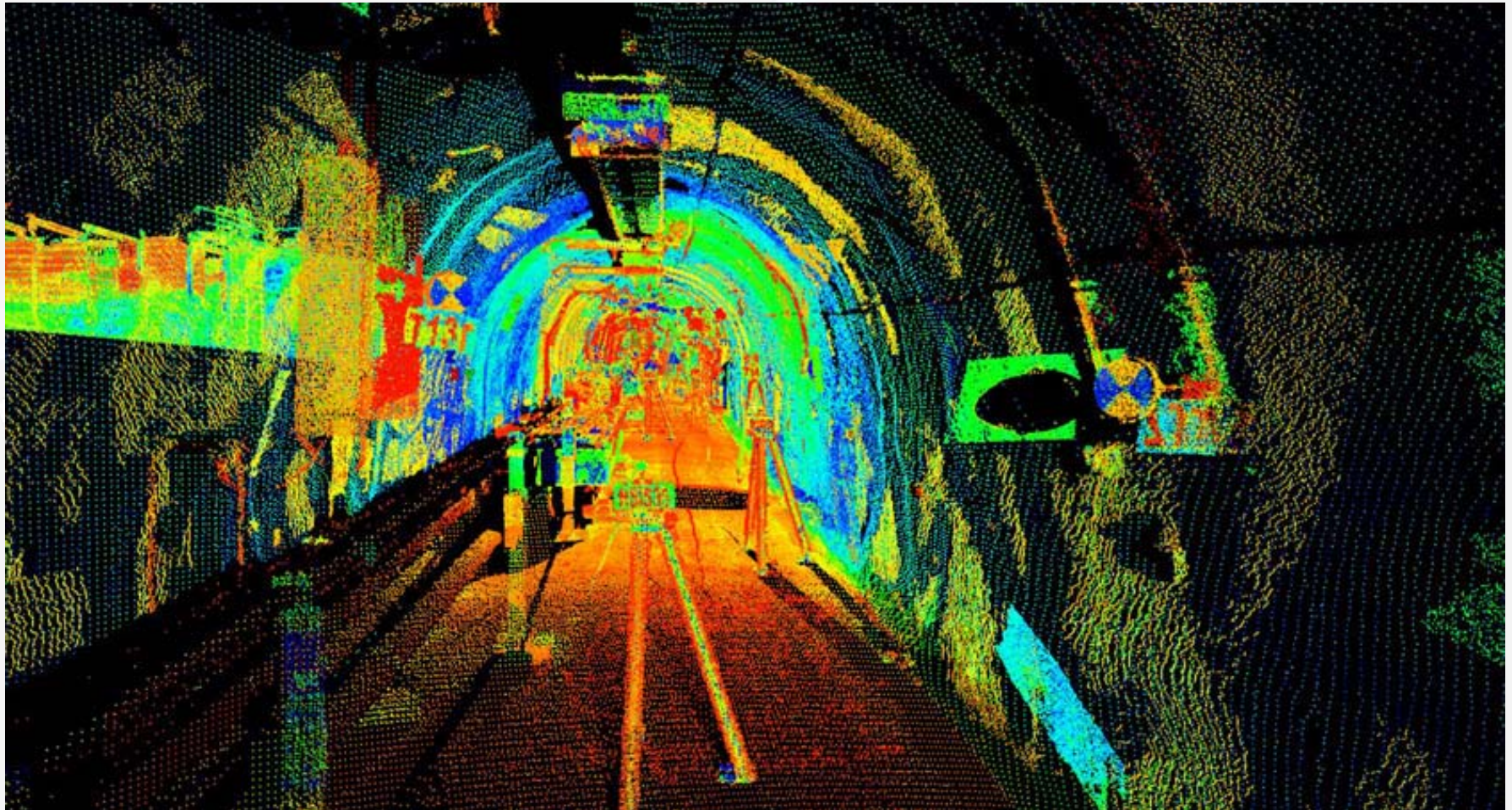
09-26-06

from SLAC Report

IWAA 2006, 9



Laser Scan – Targets / Tripods



09-26-06

from SLAC Report

IWAA 2006, 10