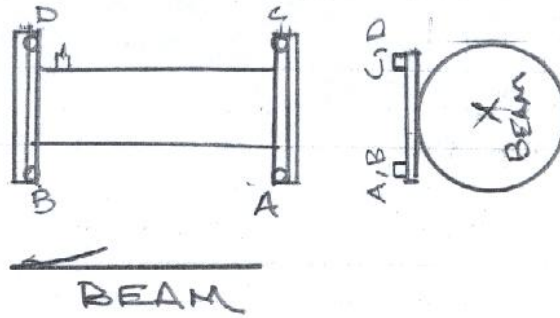


LCLS
XIA DIFF. PUMP
SN: 8858721-1

#1



| | X | Y | Z |
|---|--------|-------|---------|
| A | 3.756 | 5.992 | -10.065 |
| B | 3.757 | 5.999 | 10.059 |
| C | -3.751 | 6.010 | -10.072 |
| D | -3.757 | 6.009 | 10.049 |

LCLS

8-11-09
B.R., L.G.

XIA DIFF PUMP

LAB DATA

SN: 8858721-1

(X)

D/SFL. 3.987
U/SFL. 3.983

20. —
20.739
22. —
22.029

22.070
22.074

+26.057 COS

PINS

u/s) 26.057
.173 R

25.8845/R
25.886

-002

D/S) 26.057
.175

25.8825/R
25.883

-001

A) 21.301
1 —

22.301
26.057

+3.756

B) 21.300
1 —

22.300
26.057

+3.757

C) 28.808
1 —

29.808
26.057

-3.751

D) 28.814
1 —

29.814
26.057

-3.757

MFD LCLS
 XIA DIFF PUMP
 SN: 8858721-1

8-11-09
 L.G., B.R.

LAB DATA

U/S FLANGE

D/S FLANGE

U/S PIN

D/S PIN

$7.965 \phi = 3.983$

$7.974 \phi = 3.987$

$.346 \phi = .173$

$.350 \phi = .175$

(4)

U/S PIN

D/S PIN

$$\begin{array}{r} 14.044 \\ 0.173 \\ \hline 14.217 \end{array}$$

$$\begin{array}{r} 14.048 \\ 0.175 \\ \hline 14.223 \end{array}$$

HI = 14.217

TB

A

B

C

D

READ

7.225

7.218

7.207

7.208

FT

1

1

1

1

S/T

8.225

8.218

8.207

8.208

HI

14.217

14.217

14.217

14.217

2

+5.992

+5.999

+6.010

+6.009

2.17

M D LLS
XIA DIFF PUMP
SN: 8858721-1

8-11-09
L.G., B.12.

LAB DATA

(2) $\frac{20.985}{10.493}$ LENGTH

$$\begin{array}{r} 10.670 \\ 10.493 \\ \hline 21.163 \end{array}$$

TB A 30.228 B 10.104 C 30.235 D 10.114

$$\begin{array}{r} 1 \\ \hline 31.228 \\ 21.163 \\ \hline -10.065 \end{array}$$

$$\begin{array}{r} 1 \\ \hline 11.104 \\ 21.163 \\ \hline +10.059 \end{array}$$

$$\begin{array}{r} 1 \\ \hline 31.235 \\ 21.163 \\ \hline -10.072 \end{array}$$

$$\begin{array}{r} 1 \\ \hline 11.114 \\ 21.163 \\ \hline +10.049 \end{array}$$

2-1