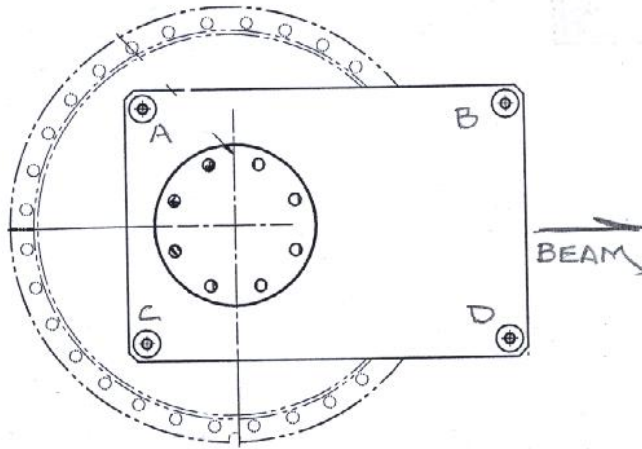


LCLS
 LUSI AMO
 BEAM FOOTPRINT ASSY

9-9-09



	X	Y	Z
A	-3.316	34.754	-3.329
B	3.360	34.685	6.638
C	-3.189	34.750	-3.352
D	-3.121	34.690	+6.669

LCLS
 AMO HI-FIELD PH. STA, 9-9-89
 J.M., L.G.

SAMPLE HOLDER
 BEAM FOOTPRINT ASSY 6.730
 4.468

(X) BUCK IN ON THE (+) SIDE OF
 SLIDE SUPPORT,

u(s) ϕ	TOP FL	BOT. FL	HOLDER
d(s) ϕ	15.914	14.814	17.550
20.000	2.230	3.365	1.691
19.588	18.144	18.179	18.241 LOS
15.000			
14.961			
14.477			
14.477			

+ 18.241 LOS

A) 13.925	B) 13.881	C) 20.430	D) 20.362
14.925	14.881	21.430	21.362
18.241	18.241	18.241	18.241
+3.314	+3.360	-3.189	-3.121

LCLS AMO
HIGH FIELD PNT. STA.

9-9-09
J.M., L.G.

SAMPLE HOLDER
BEAM FOOTPRINT ASSY

(Y)

21,378 = TOP OF OPENING
1,983 1/2 OPENING

20,395 = C

58,060

+ 37,665 HI

NO ROLL
ON TOP OF OPENING

NO ROLL OR PITCH
ON THE TOP FLANGE.

A) 1,911

1. —
2,911

37,665

34,754

B) 1,980

1. —
2,980

37,665

34,685

C) 1,915

1. —
2,915

37,665

34,750

D) 1,975

1. —
2,975

37,665

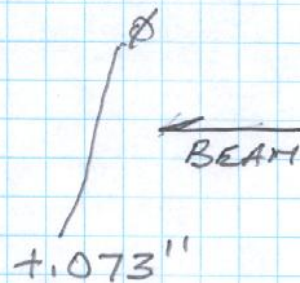
34,690

LCLS AMO
H.F.P.S.
SAMPLE HOLDER
BEAM FOOTPRINT ASS'Y

9-9-09
J.M., L.G.

(Z)

16.131 to Top D/S FACE
(+)^{0.48} PITCH Z @ 2.277 X .021
16.083 to D/S FACE @ CEN. OF OPENING



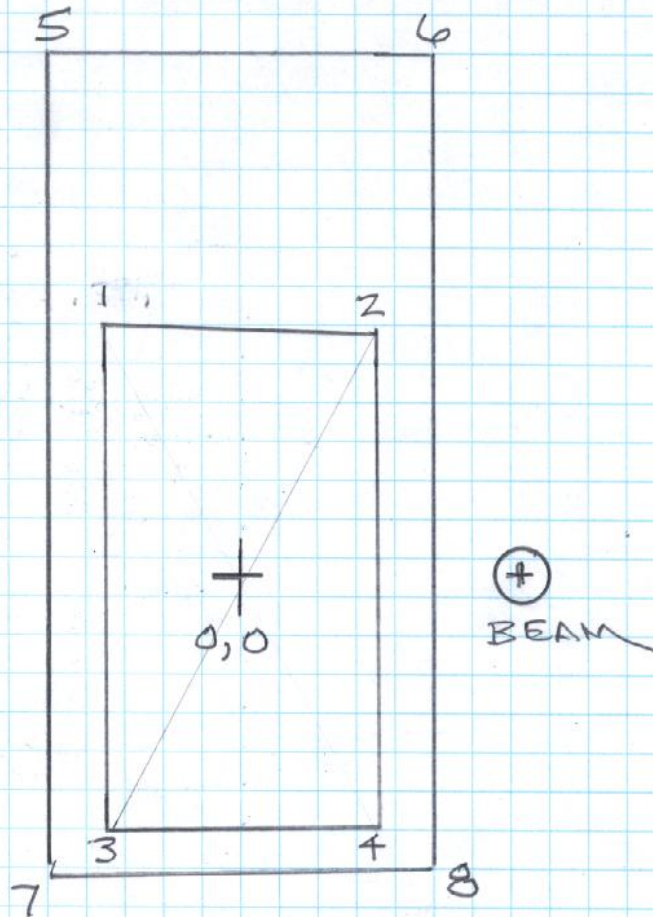
.021 MR PITCH

+16.083 LOS

A) 18.412	B) 8.445	C) 18.435	D) 8.414
1	1	1	1
19.412	9.445	19.435	9.414
16.083	16.083	16.083	16.083
-3.329	+6.638	-3.352	+6.669

1" TOOLING
BALLS

LCLS
 LU'SI AMO
 SAMPLE HOLDER
 CORNERS



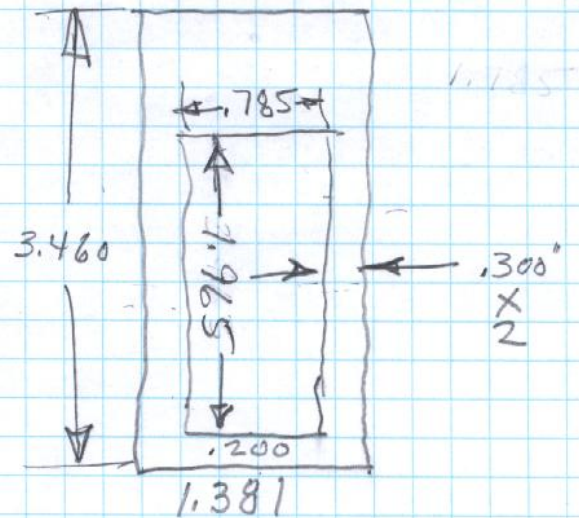
	X	Y
1	+ .393	+ .983
2	- .393	+ .983
3	+ .393	- .983
4	- .393	- .983
5	+ .691	+ 2.277
6	- .691	+ 2.277
7	+ .691	- 1.183
8	- .691	- 1.183

LCLS AMO
HI FIELD PHV.

9-9-09
J.M., L.G.

SAMPLE HOLDER
BEAM FOOTPRINT ASSY

ACC#
9682405



CENTER OF OPENING

1.183 FROM THE BOT