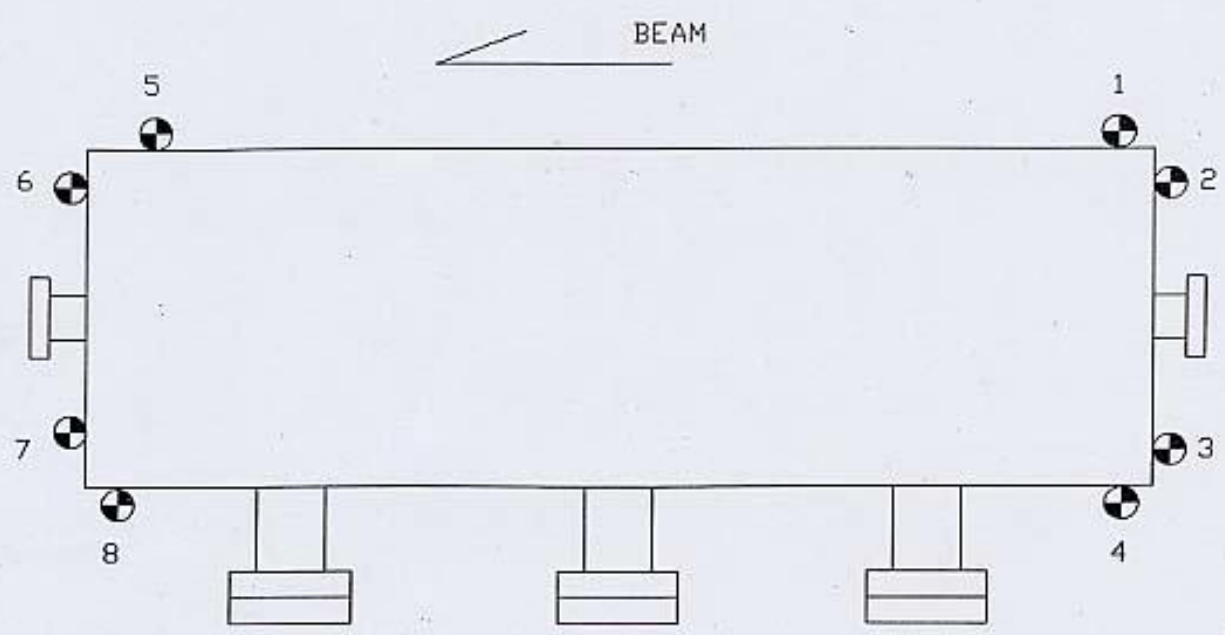


12/05

### Collimator Wakefield Apparatus



	X	Y	Z
1	-13.459	1.738	-29.850
2	-10.331	1.868	-32.500
3	10.244	1.737	-32.500
4	13.468	1.698	-29.260
5	-13.457	1.901	29.776
6	-10.312	1.955	32.500
7	10.248	1.831	32.500
8	13.472	1.916	30.130

New "Y's for ESA  
11/18/05

ESA  
WAKE FIELD

11-18-05  
I.M., L.G.

(Y) TOOK PITCH & ROLL OUT ON TOP OF SANDWICH

$$\begin{array}{r} T(B1) \ 10.252 \\ \quad 1.000 \\ \hline 11.252 \end{array} \quad T(B2)$$

$$\begin{array}{r} \text{SAND} \\ 12.253 \\ \quad 1.500 \\ \hline +13.753 \text{ H I} \end{array}$$

$$\begin{array}{r} 1) \ 11.015 \\ \quad 1.000 \\ \hline 12.015 \\ 13.753 \\ \hline +1.738 \end{array}$$

$$\begin{array}{r} 2) \ 10.885 \\ \quad 1.000 \\ \hline 11.885 \\ 13.753 \\ \hline +1.868 \end{array}$$

$$\begin{array}{r} 3) \ 11.016 \\ \quad 1.000 \\ \hline 12.016 \\ 13.753 \\ \hline +1.737 \end{array}$$

$$\begin{array}{r} 4) \ 11.055 \\ \quad 1.000 \\ \hline 12.055 \\ 13.753 \\ \hline +1.698 \end{array}$$

$$\begin{array}{r} 5) \ 10.852 \\ \quad 1.000 \\ \hline 11.852 \\ 13.753 \\ \hline +1.901 \end{array}$$

$$\begin{array}{r} 6) \ 10.798 \\ \quad 1.000 \\ \hline 11.798 \\ 13.753 \\ \hline +1.955 \end{array}$$

$$\begin{array}{r} 7) \ 10.922 \\ \quad 1.000 \\ \hline 11.922 \\ 13.753 \\ \hline +1.831 \end{array}$$

$$\begin{array}{r} 8) \ 10.837 \\ \quad 1.000 \\ \hline 11.837 \\ 13.753 \\ \hline +1.916 \end{array}$$

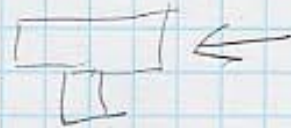
u/s FL)

o/s FL)

WAKEFIELD  
 PER CLEAN ROOM  
 FOR ESA

11-18-05  
 J.M., L.G. 9.310  
 TOP

(Y) LEVEL TO TOP OF BOX  
 FLANGES



u/s) 11.466	D/S) 11.485
2.236 RADIUS	2.236 RAD
<u>13.702</u>	<u>13.721</u>

$\bar{M} = 13.7124 \pm$

4.287

4.5  
 4.472

RAIL

u/s		D/S	
(+) 16.187	(-) 16.185	(+) 16.184	(-) 16.190
16.193	16.187	188	193

UPPER PLATE

u/s		D/S	
(+) 15.246	(-) 15.244	(+) 15.248	(-) 15.251

DEST SANDWICH 3"

u/s		D/S	
(+) 12.242	(-) 12.222	(+) 12.246	(-) 12.226
12.238	12.238	12.253	12.253
-24			-41
			C CLAMPED

SLAC SANDWICH

u/s		D/S	
(+) 12.320	(-) 12.324	(+) 12.326	(-) 12.328
.318	.324	335	337
-42	-46	-48	-50
			END

ESA  
WAKE FIELD

11-18-05  
J.M., L.G.

SLAC SANDWICH

(Y) 13.753 HI

@ PLACE OF SHIM  
D/S

u/s

+  
12.390

-  
12.390

+  
12.390

-  
12.390

12.321

12.328

12.319

12.325

11/22

13.753  
1.432  

---

12.321 5/2

11-21-05  
FLANGES

u/s) 13.753  
2.236 R

---

11.517 5/R

11.502

---

7.015

d/s) 11.517 5/R  
11.472

7.035

11-22-05

SLAC SANDWICH @ ENDS

u/s

D/S

(+) 12.321

(-) 12.332

(+) 12.321

(-) 12.330

WALKFIELD  
FOR ESA

11-18-05  
J.M., L.G.

(X)

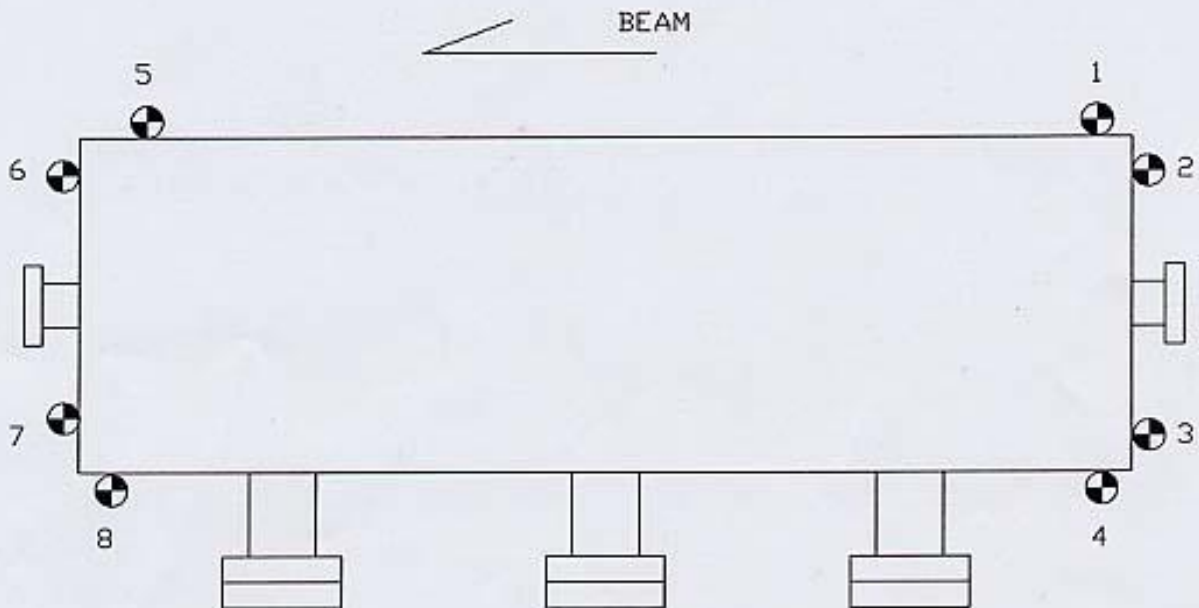
4) 13.468	55.000 REF	2.860
8) 13.472	15.478 LOS	
3.000 +	<u>39.522 = 4</u>	1.420
2.162 +		
1.000 +		
1.000 +		
2.010 -		
2.000 -		
+ 15.478 LOS		

(Y) LEVELED TO TOP OF BOX  
13.712 HI

	DESY SANDWICH 3"			
	u/s		p/s	
+ 12.242	- 12.242	+ 12.247	- 12.250	OVER RAIL
12.238	12.237	12.252	12.253	ENDS
253				

Collimator Wakefield Apparatus

4/4/00

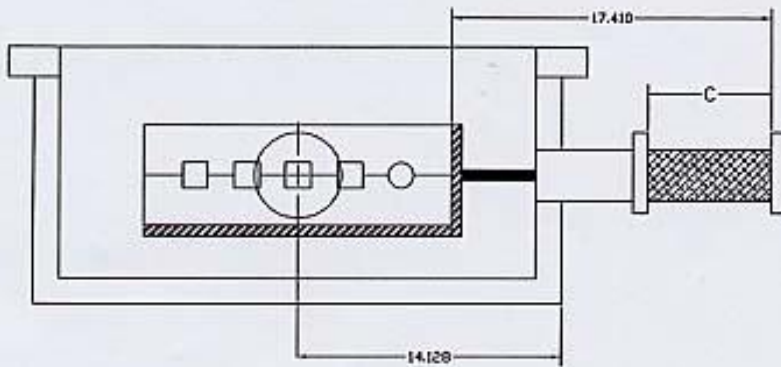


*Revised  
4/4/2001  
11/18/2005  
DJ*

	X	Y	Z
1	-13.459	1.771	-29.850
2	-10.331	1.903	-32.500
3	10.244	1.765	-32.500
4	13.468	1.724	-29.260
5	-13.457	1.901	29.776
6	-10.312	1.958	32.500
7	10.248	1.830	32.500
8	13.472	1.913	30.130

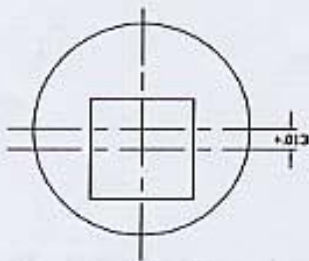
4/4/00

# Collimator Wakefield Apparatus

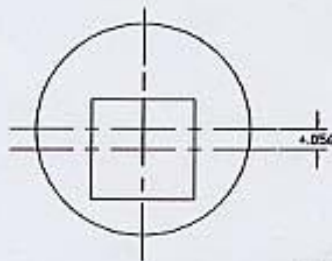


Pos	C
0	4.765
1	6.760
2	8.890
3	11.014
4	13.017

U / S

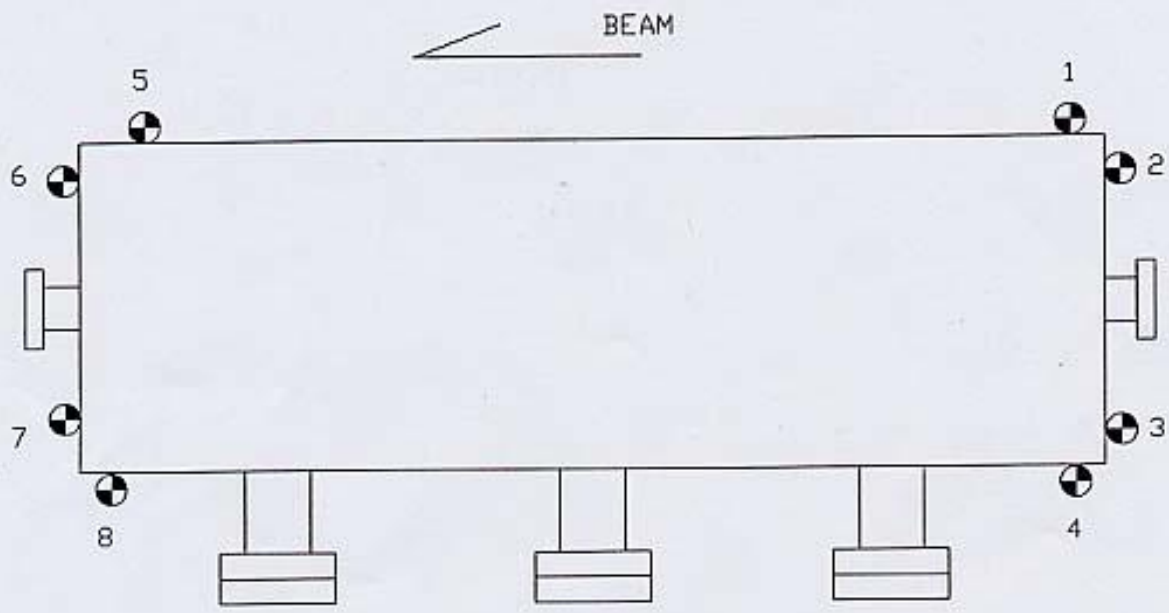


D / S



4/4/00

Collimator Wakefield Apparatus



REVISED  
4/12/2001

	X	Y	Z
1	-13.459 ✓	1.753 ✓	-29.850 ✓
2	-10.331 ✓	1.884 ✓	-32.500 ✓
3	10.244 ✓	1.747 ✓	-32.500 ✓
4	13.468 ✓	1.706 ✓	-29.260 ✓
5	-13.457 ✓	1.901 ✓	29.776 ✓
6	-10.312 ✓	1.958 ✓	32.500 ✓
7	10.248 ✓	1.830 ✓	32.500 ✓
8	13.472 ✓	1.913 ✓	30.130 ✓

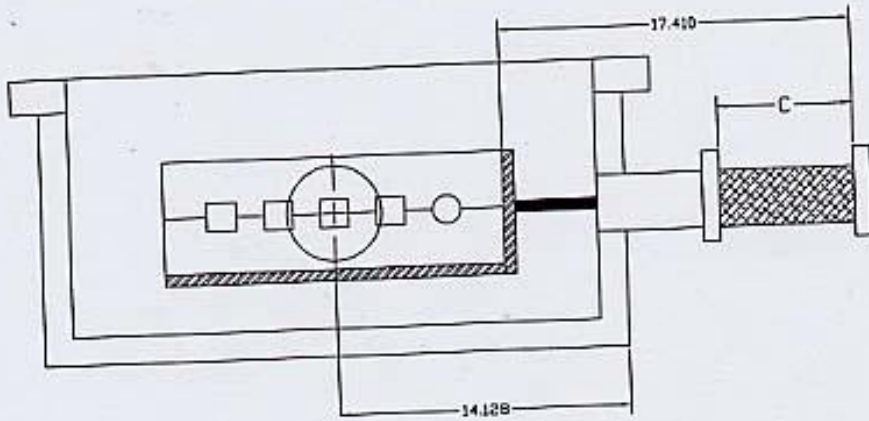
✓ MR 3/14/00

- 1 1.771
- 2 1.902
- 3 1.765
- 4 1.724

CHANGED u/s  
Y'S .018 LOWER



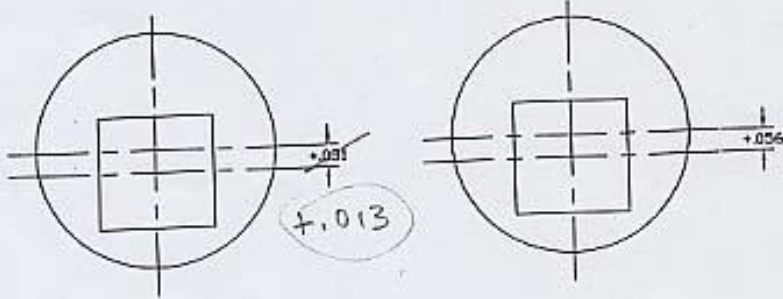
# Collimator Wakefield Apparatus



Pos	C	
0	<del>1.278</del>	4.765
1	6.765	4.760
2	<del>8.912</del>	8.870
3	11.035	11.014
4	<del>13.047</del>	13.017

U / S

D / S



LOWERED

U/S .018

4-4-2000  
 J. McDougal  
 H. Imfeld  
 F. Gandreault

(Y)

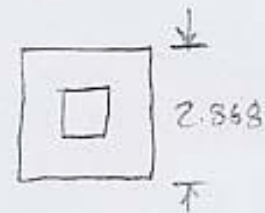
Wakefield

	①	④	③
READ	11.812	11.878	11.670
VAL	1.753	1.706	1.913
S/T	13.585	13.584	13.583
FT	1	1	1
HI	14.585	14.584	14.583

HI = 14.584

	5	③	②
HI	14.584	14.584	14.584
VAL	1.901	1.747	1.884
S/T	12.683	12.837	12.700
FT	1	1	1
S/R	11.683	11.837	11.700
FND			

	②	⑦
HI	14.584	14.584
VAL	1.958	1.830
S/T	12.616	12.754
FT	1	1
S/R	11.616	11.754
FND		



U/S

0	1	2	3	4
12.13321		12.15441		12.13241

D/S

0	1	2	3	4
12.15121		12.15211		12.15211

HI	14.584	
VAL	1.434	
S/T	13.150	
C/S	.031	+ .018
S/R	13.181	
FND	13.133	+ 048

14.584	
1.434	
13.150	+ .001
.056	
13.206	
13.152	+ 054

ADJUST U/S & VALUES BY .018 LOWER

⊗

① FAR VAL -13.454  
 ② NEAR VAL -13.457  
 1<sup>st</sup> F 8.5 +1 9.5  
 1<sup>st</sup> N 6.531 +1 7.531  
 2<sup>nd</sup> F 6 - +1 7.000  
 2<sup>nd</sup> N 4924 +1 5924  
 SIR F 3.982 -1  
 SIR N 3.984 -1 2.986 ✓  
 LOS -17.441

	<u>U/S Flare</u>	<u>D/S Flare</u>
LOS	-17.441	-17.441
VAL	-1.620 <u>red.</u>	-1.620
SIR	-15.821	-15.821
FND	-15.828 <u>-0.007</u>	-15.832 <u>-0.004</u>

⑥  
 LOS -17.441  
 VAL -10.312  
 SIT -7.129  
 FT 1  
 SIR -6.129  
 FND -6.139 -0.010

LOS -17.441  
 Set Blade @ 20  
 ♀ Blade 37.441  
 Set Gun @ ♀ → LOS = 0.000  
 Set Gun @ 70,000 → LOS = 32.559

♀ Gun

Set Scribe #2  
 c should be 8.912  
 Set Scribe #3  
 c should be 11.035  
 Set Scribe #4  
 c should be 13.047  
 Set Scribe #1  
 c should be 6.785  
 Set Scribe #0  
 c should be 4.778

32.559 Gun  
 [burned] 1c1 4/4/00  
 18.435 - 9.545 = c = 8.890  
 18.435 - 7.421 = c = 11.014  
 18.435 - 5.418 = c = 13.017  
 18.435 - 11.675 = c = 6.760  
 18.435 - 13.670 = c = 4.765